



SMP Male Smooth Bore Connector Solder Attachment Surface Mount PCB, Pre-Tinned Contacts

RF Connectors Technical Data Sheet

PE44947

Configuration

- Smooth Bore SMP Male Connector
- 50 Ohms
- Straight Body Geometry
- Connector Interface Types: Surface Mount

Features

- Max. Operating Frequency 18 GHz
- Excellent VSWR of 1.25:1
- Gold Plated Kovar Contact
- Contact plating according to MIL-G-45204
- Blind Mate Connector

Applications

- General Purpose Test
- PCB Applications

Description

Pasternack's PE44947 SMP male smooth bore connector with solder attachment for Surface Mount PCB is part of our full line of RF components available for same-day shipping. Our SMP male connector operates up to a maximum frequency of 18 GHz and offers excellent VSWR of 1.25:1. The Pasternack blind mate connector is ideal for applications where direct visual or tactile access to the connection point is not possible, for example, when two circuit boards need to be mated.

Our SMP male connector PE44947 datasheet specifications and drawing with dimensions are shown below in this PDF. Pasternack's broad catalog of RF, microwave and millimeter wave connectors allows designers to configure and customize their signal connections however they like. Whether the need is to provide an I/O for a board design, or simply create a custom cable assembly configuration, Pasternack has the right connector for the job. Pasternack can also expertly build your custom cable assemblies for you and ship same-day.

Electrical Specifications

Description	Minimum	Typical	Maximum	Units
Frequency Range	DC		18	GHz
VSWR			1.25:1	

Mechanical Specifications

Size

Length	0.195 in [4.95 mm]
Width/Dia.	0.19 in [4.83 mm]
Weight	0.0008 lbs [0.36 g]

Click the following link (or enter part number in "SEARCH" on website) to obtain additional part information including price, inventory and certifications: [SMP Male Smooth Bore Connector Solder Attachment Surface Mount PCB, Pre-Tinned Contacts PE44947](#)



SMP Male Smooth Bore Connector Solder Attachment
Surface Mount PCB, Pre-Tinned Contacts

RF Connectors
Technical Data Sheet

PE44947

Material Specifications

Description	Material	Plating
Contact	Kovar	Gold MIL-G-45204
Insulation	Glass	
Body	Kovar	Gold MIL-G-45204

Environmental Specifications

Temperature

Operating Range -55 to +155 deg C

Compliance Certifications (see [product page](#) for current document)

Plotted and Other Data

Notes:

SMP Male Smooth Bore Connector Solder Attachment Surface Mount PCB, Pre-Tinned Contacts from Pasternack Enterprises has same day shipment for domestic and International orders. Our RF, microwave and millimeter wave products maintain a 99.4% availability and are part of the broadest selection in the industry.

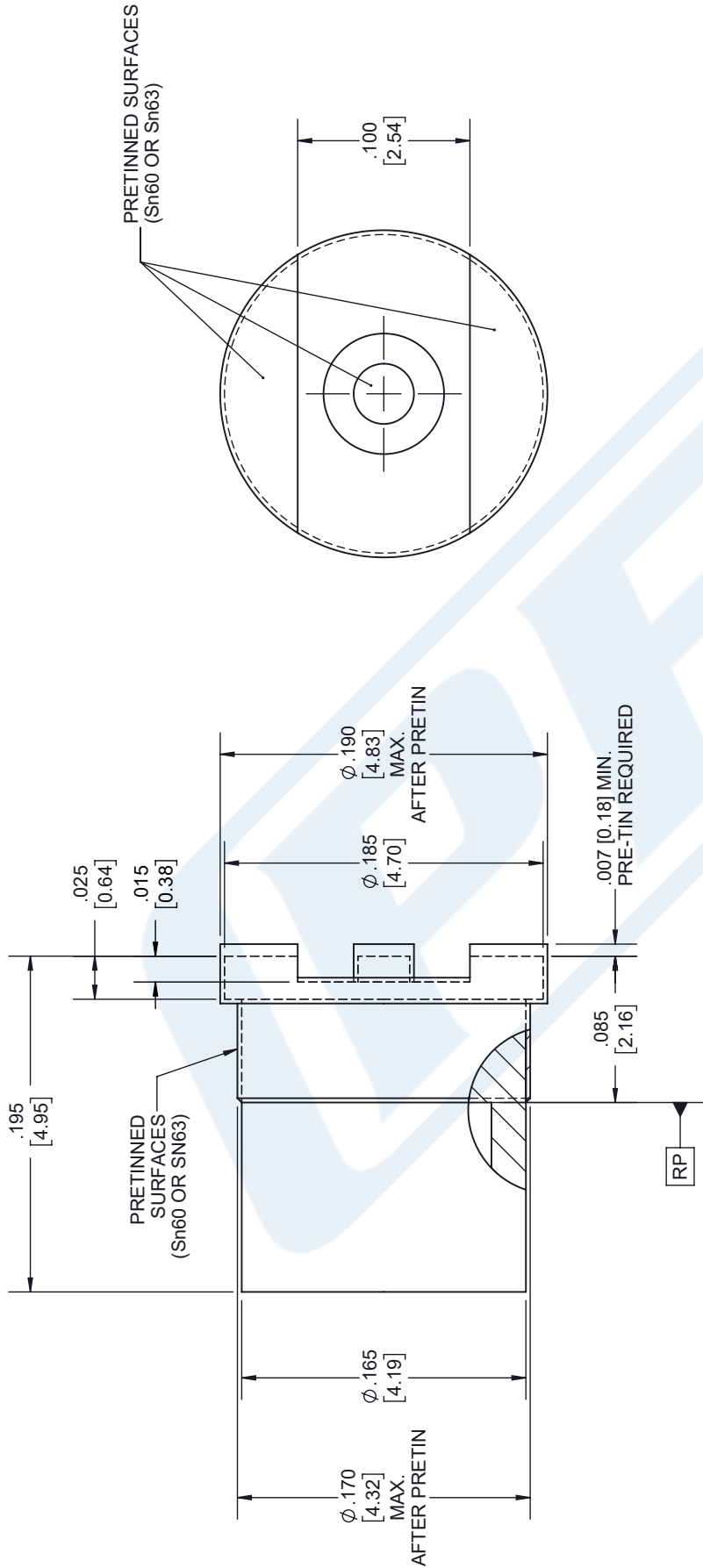
Click the following link (or enter part number in "SEARCH" on website) to obtain additional part information including price, inventory and certifications: [SMP Male Smooth Bore Connector Solder Attachment Surface Mount PCB, Pre-Tinned Contacts PE44947](#)

URL: <https://www.pasternack.com/smp-male-standard-surface-mount-pcb-connector-pe44947-p.aspx>

The information contained in this document is accurate to the best of our knowledge and representative of the part described herein. It may be necessary to make modifications to the part and/or the documentation of the part, in order to implement improvements. Pasternack reserves the right to make such changes as required. Unless otherwise stated, all specifications are nominal. Pasternack does not make any representation or warranty regarding the suitability of the part described herein for any particular purpose, and Pasternack does not assume any liability arising out of the use of any part or documentation.

SMP Male Smooth Bore Connector Solder Attachment Surface Mount PCB, Pre-Tinned Contacts

REVISIONS			
REV.	DESCRIPTION	DATE	APPROVED
B	PCR PE44947	3/2/2022	A. GANWANI



UNLESS OTHERWISE SPECIFIED
LEADING DIMENSIONS ARE INCHES
DIMENSIONS IN [] ARE MILLIMETERS

TOLERANCES:

SIZE	FRACTIONS	ANGLES
.X = ±.2	[.008]	±1/32
.XX = ±.02	[.51]	±.13
.XXX = ±.005	[.13]	±.13

CABLE LENGTH (L) TOLERANCES:

L ≤ 12 [305]	±.1 [25]
12 [305] < L ≤ 60 [1524]	±.2 [51]
60 [1524] < L ≤ 120 [3048]	±.4 [102]
120 [3048] < L ≤ 300 [7620]	±.6 [152]
300 [7620] < L	±.5% []

ALL DIMENSIONS SHOWN
ARE FOR REFERENCE ONLY.

PE PASTERNAK
an INFINITE brand

Pasternack Enterprises, Inc.
P.O. Box 16759, Irvine, CA 92623.
Phone: 1.949.261.1920 | 1.866.727.8376
Fax: 1.949.261.7451
Website: www.pasternack.com
E-mail: sales@pasternack.com

THIRD-ANGLE PROJECTION

THE INFORMATION AND
DESIGN IN THIS DOCUMENT
IS THE PROPERTY OF
PASTERNAK CORPORATION
ALL RIGHTS RESERVED.

SHEET 1 OF 1

SCALE N/A

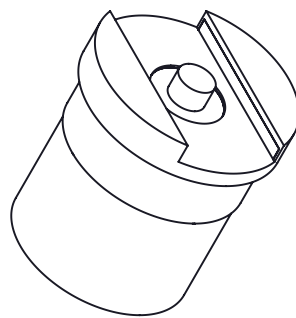
SIZE A

CAGE CODE 53919

DRAWN BY K.DANG

ITEM NO. PE44947

REV B



THESE COMMODITIES, TECHNOLOGY OR SOFTWARE WERE EXPORTED FROM THE UNITED STATES IN ACCORDANCE
WITH THE EXPORT ADMINISTRATION REGULATIONS. DIVERSION CONTRARY TO U.S. LAW PROHIBITED.