



## WR-430 UDR22 Flange to SMA Female Waveguide to Coax Adapter Operating from 1.72 GHz to 2.61 GHz in Aluminum

### Waveguide to Coax Adapters Technical Data Sheet

### PEWCA1080

#### Features

- 1.72 GHz to 2.61 GHz Frequency Range
- WR-430 Waveguide Interface
- UDR22 Flange
- SMA Female RF Interface
- Comprehensive waveguide offering also include E-Bends, H-Bends, Sections, Filters, Terminations, Couplers, and more.

#### Applications

- Test Benches
- Radar
- Satellite
- Microwave Radio Systems
- Military and Space
- Communication Systems

#### Description

The PEWCA1080 is a right angle waveguide to coaxial adapter operating at a frequency range of 1.72 GHz to 2.61 GHz. This adapter offers a WR-430 waveguide interface size coupled with a precision tolerance UDR22 flange. The PEWCA1080 is constructed of aluminum and painted gray to ensure durability. The coaxial connector offered by this adapter uses an SMA Female connector.

#### Configuration

Waveguide Size	WR-430
Flange	UDR22
RF Connector	SMA Female
Body Geometry	Right Angle

#### Electrical Specifications

Description	Minimum	Typical	Maximum	Units
Frequency Range	1.72		2.61	GHz
VSWR			1.25:1	
Insertion Loss			0.3	dB
Input Power (CW)			50	Watts

#### Mechanical Specifications

<b>Size</b>	
Length	4.33 in [109.98 mm]
Width	6.34 in [161.04 mm]
Height	4.19 in [106.43 mm]
Weight	1 lbs [453.59 g]
<b>RF Connector</b>	
Connector Type	SMA Female

Click the following link (or enter part number in "SEARCH" on website) to obtain additional part information including price, inventory and certifications: [WR-430 UDR22 Flange to SMA Female Waveguide to Coax Adapter Operating from 1.72 GHz to 2.61 GHz in Aluminum PEWCA1080](#)



## WR-430 UDR22 Flange to SMA Female Waveguide to Coax Adapter Operating from 1.72 GHz to 2.61 GHz in Aluminum

### Waveguide to Coax Adapters Technical Data Sheet

**PEWCA1080**

#### Waveguide Interface

Waveguide Type	WR-430
Flange Type	UDR22
Body Material and Plating	Aluminum

**Compliance Certifications** (see [product page](#) for current document)

#### Plotted and Other Data

Notes:

- Values at +25 °C, sea level unless stated otherwise

WR-430 UDR22 Flange to SMA Female Waveguide to Coax Adapter Operating from 1.72 GHz to 2.61 GHz in Aluminum from Pasternack Enterprises has same day shipment for domestic and International orders. Our RF, microwave and millimeter wave products maintain a 99.4% availability and are part of the broadest selection in the industry.

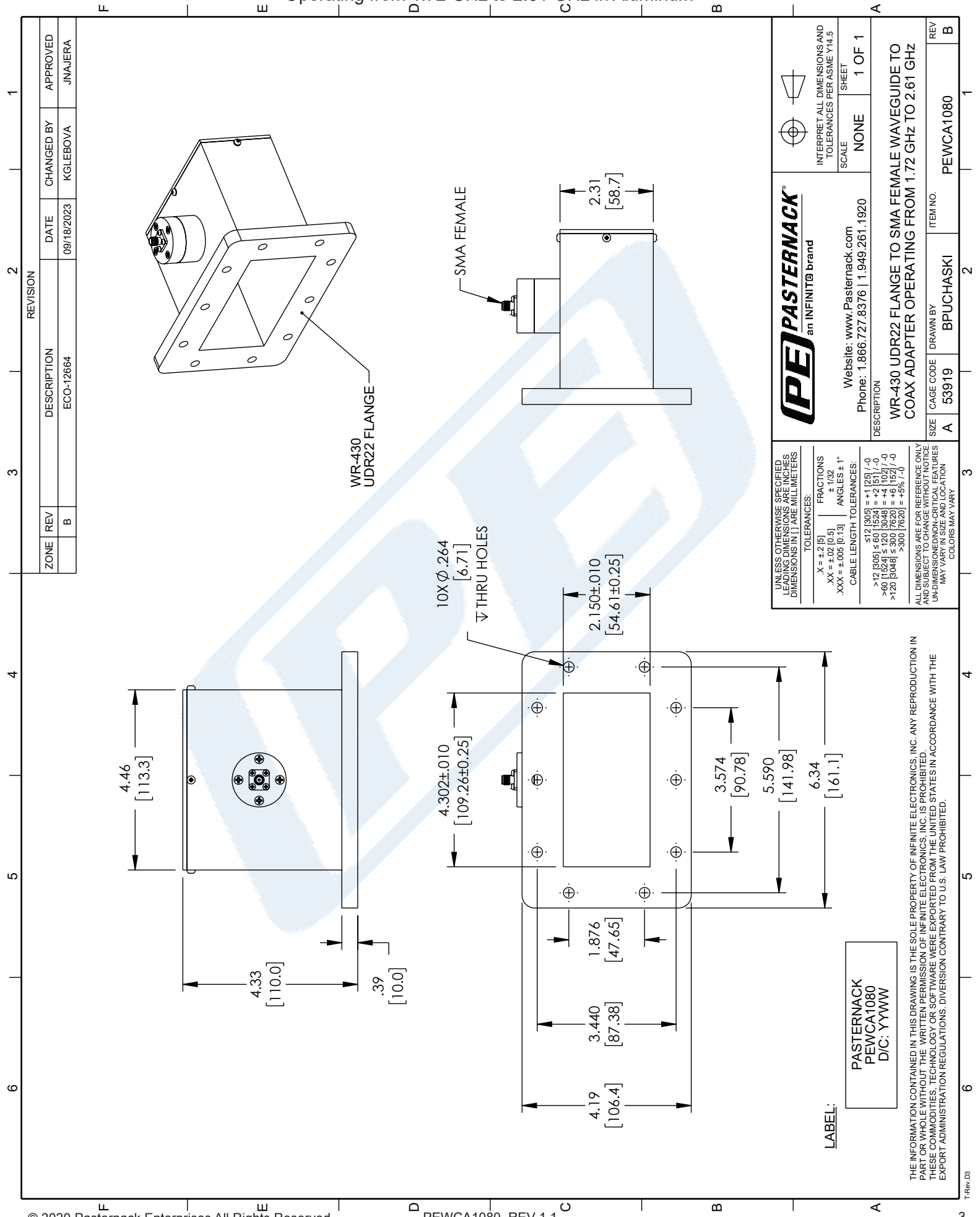
Click the following link (or enter part number in "SEARCH" on website) to obtain additional part information including price, inventory and certifications: [WR-430 UDR22 Flange to SMA Female Waveguide to Coax Adapter Operating from 1.72 GHz to 2.61 GHz in Aluminum PEWCA1080](#)

URL: <https://www.pasternack.com/wr430-udr22-flange-to-sma-female-waveguide-coax-adapter-2.61-ghz-pewca1080-p.aspx>

The information contained in this document is accurate to the best of our knowledge and representative of the part described herein. It may be necessary to make modifications to the part and/or the documentation of the part, in order to implement improvements. Pasternack reserves the right to make such changes as required. Unless otherwise stated, all specifications are nominal. Pasternack does not make any representation or warranty regarding the suitability of the part described herein for any particular purpose, and Pasternack does not assume any liability arising out of the use of any part or documentation.

# PEWCA1080 CAD Drawing

WR-430 UDR22 Flange to SMA Female Waveguide to Coax Adapter  
 Operating from 1.72 GHz to 2.61 GHz in Aluminum



REVISION		DATE	CHANGED BY	APPROVED
ZONE	REV	DESCRIPTION		
	B	ECO-12664	KGLEBOVA	JNAJERA

ZONE	REV	DESCRIPTION	DATE	CHANGED BY	APPROVED
	B	ECO-12664	09/18/2023	KGLEBOVA	JNAJERA

UNLESS OTHERWISE SPECIFIED LEADING DIMENSIONS ARE IN INCHES DIMENSIONS IN [ ] ARE MILLIMETERS
TOLERANCES:
.X = ±.2 [5]
.XX = ±.02 [0.5]
.XXX = ±.005 [0.13]
FRACTIONS ± 1/32
ANGLES ± 1°
CABLE LENGTH TOLERANCES:
<12 [305] = ±.1 [2.5] / -0
>12 [305] ≤ 60 [1524] = ±.2 [5] / -0
>60 [1524] ≤ 120 [3048] = ±.4 [10.2] / -0
>120 [3048] ≤ 300 [7620] = ±.6 [15.2] / -0
>300 [7620] = ±.5% / -0
ALL DIMENSIONS ARE FOR REFERENCE ONLY UNLESS OTHERWISE SPECIFIED UNDIMENSIONED NON-CRITICAL FEATURES MAY VARY IN SIZE AND LOCATION COLORS MAY VARY

WEBSITE: [www.Pasternack.com](http://www.Pasternack.com)  
 PHONE: 1.866.727.8376 | 1.949.261.1920

DESCRIPTION  
 WR-430 UDR22 FLANGE TO SMA FEMALE WAVEGUIDE TO  
 COAX ADAPTER OPERATING FROM 1.72 GHz TO 2.61 GHz

SCALE: NONE  
 SHEET: 1 OF 1

ITEM NO. PEWCA1080  
 DRAWN BY BPUCHASKI  
 CAGE CODE A 53919

REV B

PEWCA1080 REV 1.1

© 2020 Pasternack Enterprises All Rights Reserved

THE INFORMATION CONTAINED IN THIS DRAWING IS THE SOLE PROPERTY OF INFINITE ELECTRONICS, INC. ANY REPRODUCTION IN PART OR WHOLE WITHOUT THE WRITTEN PERMISSION OF INFINITE ELECTRONICS, INC. IS PROHIBITED. THESE COMMODITIES, TECHNOLOGY OR SOFTWARE WERE EXPORTED FROM THE UNITED STATES IN ACCORDANCE WITH THE EXPORT ADMINISTRATION REGULATIONS. DIVERSION CONTRARY TO U.S. LAW PROHIBITED.

LABEL:  
 PASTERNAK  
 PEWCA1080  
 D/C: YYWW