



SMA Male Right Angle Precision Connector Solder Attachment
For PE-SR402AL, PE-SR402FL, PE-SR402FLJ, RG402

TECHNICAL DATA SHEET

PE44693

SMA Male Right Angle Precision Connector Solder Attachment For PE-SR402AL, PE-SR402FL, PE-SR402FLJ, RG402

Configuration

Connector	SMA Male
Connector Interface Type	PE-SR402AL, PE-SR402FL, PE-SR402FLJ, RG402
Cable Attachment Method (Shield/Contact)	Solder/Solder
Connector Design	Precision
Body Style	Right Angle

Electrical Specifications

Frequency Range, GHz	DC to 10
Impedance, Ohms	50

Mechanical Specifications

Size

Length, in [mm]	0.598 [15.19]
Width/Dia., in [mm]	0.315 [8.00]
Height, in [mm]	0.453 [11.51]

Connector

Type	SMA Male
Contact Material and Plating	Brass, Gold
Coupling Nut Material and Plating	Passivated Stainless Steel
Hex Size, in.	5/16
Torque, in-lbs [Nm]	8 [0.9]
Body Material and Plating	Brass, Gold
Dielectric Type	PTFE

Compliance Certifications (visit www.Pasternack.com for current document)

RoHS Compliant	Yes
----------------	-----

Click the following link (or enter part number in "SEARCH" on website) to obtain additional part information including price, inventory and certifications: [SMA Male Right Angle Precision Connector Solder Attachment For PE-SR402AL, PE-SR-402FL, PE-SR402FLJ, RG402 PE44693](#)

The information contained in this document is accurate to the best of our knowledge and representative of the part described herein. It may be necessary to make modifications to the part and/or the documentation of the part, in order to implement improvements. Pasternack reserves the right to make such changes as required. Unless otherwise stated, all specifications are nominal.



SMA Male Right Angle Precision Connector Solder Attachment
For PE-SR402AL, PE-SR402FL, PE-SR402FLJ, RG402

TECHNICAL DATA SHEET

PE44693

Plotted and Other Data

Notes:

Values at 25 °C, sea level

SMA Male Right Angle Precision Connector Solder Attachment For PE-SR402AL, PE-SR402FL, PE-SR402FLJ, RG402 from Pasternack Enterprises has same day shipment for domestic and International orders. Our RF, microwave and fiber optic products maintain a 99% availability and are part of the broadest selection in the industry.

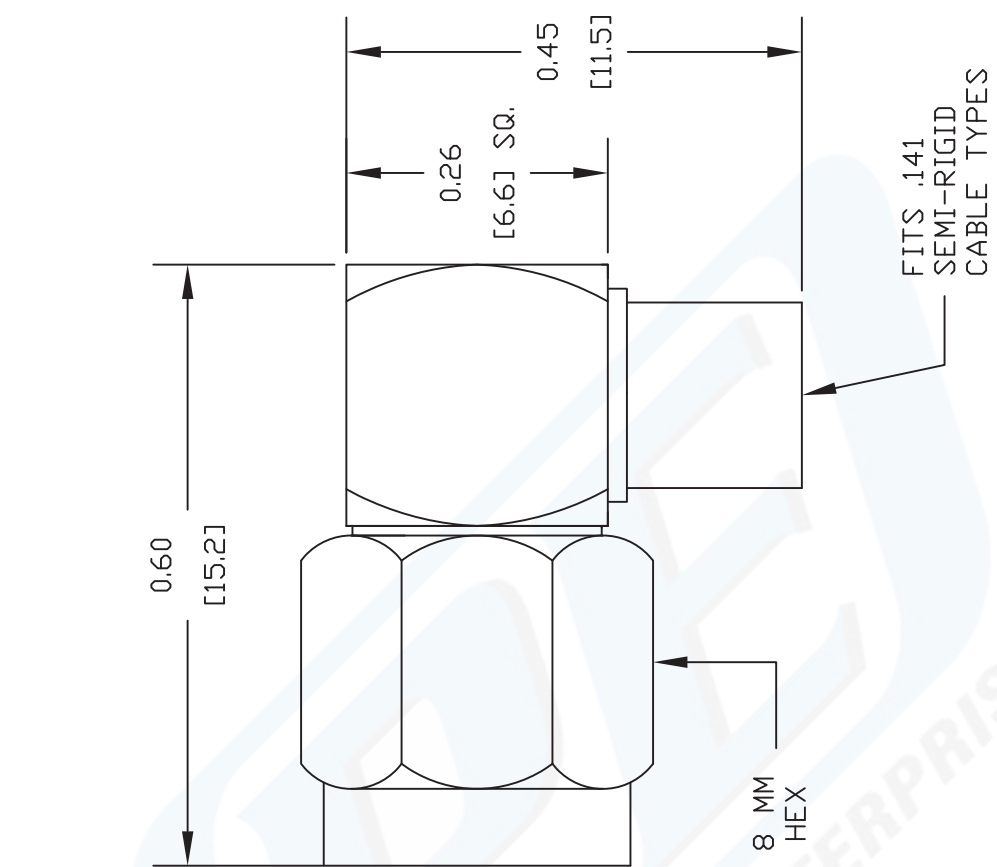
Click the following link (or enter part number in "SEARCH" on website) to obtain additional part information including price, inventory and certifications: [SMA Male Right Angle Precision Connector Solder Attachment For PE-SR402AL, PE-SR402FL, PE-SR402FLJ, RG402 PE44693](http://www.pasternack.com/sma-male-standard-pe-sr402al-pe-sr402fl-pe-sr402flj-connector-pe44693-p.aspx)

URL: <http://www.pasternack.com/sma-male-standard-pe-sr402al-pe-sr402fl-pe-sr402flj-connector-pe44693-p.aspx>

The information contained in this document is accurate to the best of our knowledge and representative of the part described herein. It may be necessary to make modifications to the part and/or the documentation of the part, in order to implement improvements. Pasternack reserves the right to make such changes as required. Unless otherwise stated, all specifications are nominal.

PE44693 CAD Drawing

SMA Male Right Angle Precision Connector Solder Attachment
For PE-SR402AL, PE-SR402FL, PE-SR402FLJ, RG402



STRIPPING DIMENSIONS

ASSEMBLY PROCEDURES

1. STRIP CABLE AS SHOWN & TIN CENTER CONDUCTOR.
2. INSERT CABLE INTO BODY UNTIL OUTER CONDUCTOR BOTTOMS OUT. THE CENTER CONDUCTOR WILL PROTRUDE INTO CONTACT SLOT.
3. SOLDER CENTER CONDUCTOR INTO SLOT AND OUTER CONDUCTOR TO BODY. PRESS CAP INTO CONNECTOR BODY.

NOTES:
1. UNLESS OTHERWISE SPECIFIED ALL DIMENSIONS ARE NOMINAL.
2. ALL SPECIFICATIONS ARE SUBJECT TO CHANGE WITHOUT NOTICE AT ANY TIME.
3. DIMENSIONS ARE IN INCHES [mm].
4. FITS MIL-C-17 AND EQUIVALENT CABLES.

DWG TITLE
PE44693

PASTERNAK ENTERPRISES, INC.
P.O. BOX 16759, IRVINE, CA 92623
PHONE (949) 261-1920 FAX (949) 261-7451
WEB ADDRESS: www.pasternack.com
E-MAIL ADDRESS: sales@pasternack.com
COAXIAL & FIBER OPTICS



REV. -	FSCM NO. 53919	CAD FILE 062111	SCALE N/A	SIZE A	2231
--------	----------------	-----------------	-----------	--------	------



SMA Male Right Angle Precision Connector Solder Attachment
For PE-SR402AL, PE-SR402FL, PE-SR402FLJ, RG402

TECHNICAL DATA SHEET

PE44693

SMA Male Right Angle Precision Connector Solder Attachment For PE-SR402AL, PE-SR402FL, PE-SR402FLJ, RG402

Configuration

Connector	SMA Male
Connector Interface Type	PE-SR402AL, PE-SR402FL, PE-SR402FLJ, RG402
Cable Attachment Method (Shield/Contact)	Solder/Solder
Connector Design	Precision
Body Style	Right Angle

Electrical Specifications

Frequency Range, GHz	DC to 10
Impedance, Ohms	50

Mechanical Specifications

Size

Length, in [mm]	0.598 [15.19]
Width/Dia., in [mm]	0.315 [8.00]
Height, in [mm]	0.453 [11.51]

Connector

Type	SMA Male
Contact Material and Plating	Brass, Gold
Coupling Nut Material and Plating	Passivated Stainless Steel
Hex Size, in.	5/16
Torque, in-lbs [Nm]	8 [0.9]
Body Material and Plating	Brass, Gold
Dielectric Type	PTFE

Compliance Certifications (visit www.Pasternack.com for current document)

RoHS Compliant	Yes
----------------	-----

Click the following link (or enter part number in "SEARCH" on website) to obtain additional part information including price, inventory and certifications: [SMA Male Right Angle Precision Connector Solder Attachment For PE-SR402AL, PE-SR-402FL, PE-SR402FLJ, RG402 PE44693](#)

The information contained in this document is accurate to the best of our knowledge and representative of the part described herein. It may be necessary to make modifications to the part and/or the documentation of the part, in order to implement improvements. Pasternack reserves the right to make such changes as required. Unless otherwise stated, all specifications are nominal.



SMA Male Right Angle Precision Connector Solder Attachment
For PE-SR402AL, PE-SR402FL, PE-SR402FLJ, RG402

TECHNICAL DATA SHEET

PE44693

Plotted and Other Data

Notes:

Values at 25 °C, sea level

SMA Male Right Angle Precision Connector Solder Attachment For PE-SR402AL, PE-SR402FL, PE-SR402FLJ, RG402 from Pasternack Enterprises has same day shipment for domestic and International orders. Our RF, microwave and fiber optic products maintain a 99% availability and are part of the broadest selection in the industry.

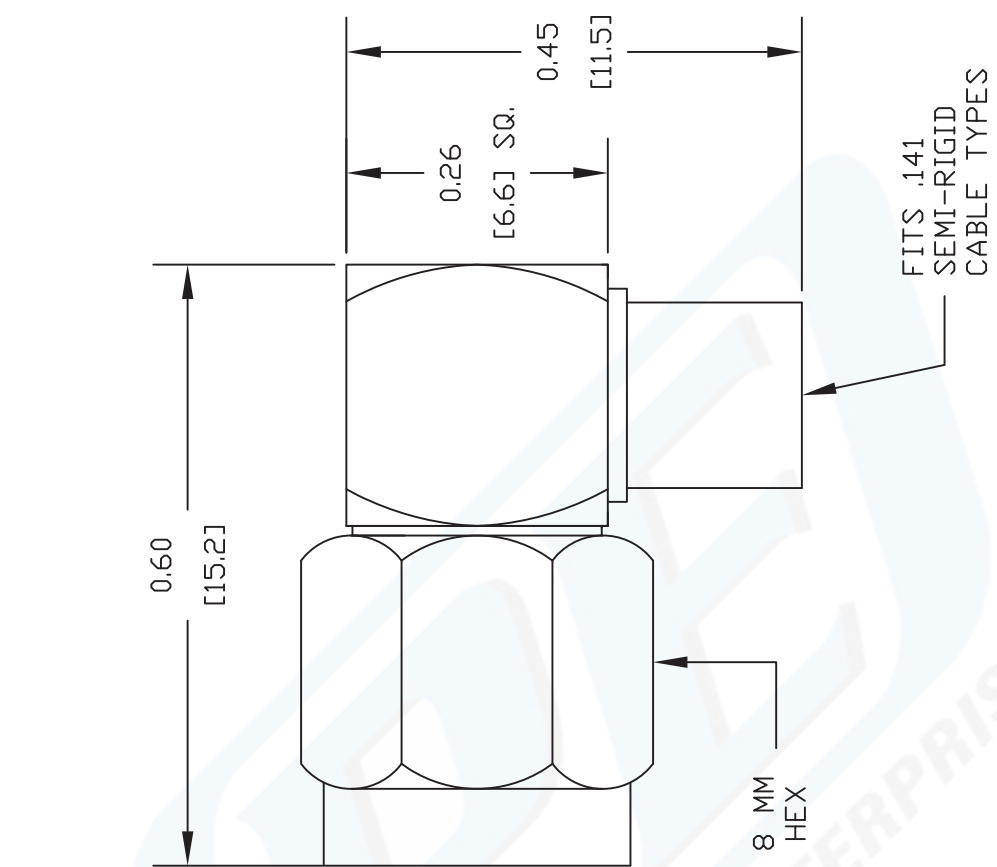
Click the following link (or enter part number in "SEARCH" on website) to obtain additional part information including price, inventory and certifications: [SMA Male Right Angle Precision Connector Solder Attachment For PE-SR402AL, PE-SR402FL, PE-SR402FLJ, RG402 PE44693](http://www.pasternack.com/sma-male-standard-pe-sr402al-pe-sr402fl-pe-sr402flj-connector-pe44693-p.aspx)

URL: <http://www.pasternack.com/sma-male-standard-pe-sr402al-pe-sr402fl-pe-sr402flj-connector-pe44693-p.aspx>

The information contained in this document is accurate to the best of our knowledge and representative of the part described herein. It may be necessary to make modifications to the part and/or the documentation of the part, in order to implement improvements. Pasternack reserves the right to make such changes as required. Unless otherwise stated, all specifications are nominal.

PE44693 CAD Drawing

SMA Male Right Angle Precision Connector Solder Attachment
For PE-SR402AL, PE-SR402FL, PE-SR402FLJ, RG402



STRIPPING DIMENSIONS

ASSEMBLY PROCEDURES

1. STRIP CABLE AS SHOWN & TIN CENTER CONDUCTOR.
2. INSERT CABLE INTO BODY UNTIL OUTER CONDUCTOR BOTTOMS OUT. THE CENTER CONDUCTOR WILL PROTRUDE INTO CONTACT SLOT.
3. SOLDER CENTER CONDUCTOR INTO SLOT AND OUTER CONDUCTOR TO BODY. PRESS CAP INTO CONNECTOR BODY.

NOTES:
1. UNLESS OTHERWISE SPECIFIED ALL DIMENSIONS ARE NOMINAL.
2. ALL SPECIFICATIONS ARE SUBJECT TO CHANGE WITHOUT NOTICE AT ANY TIME.
3. DIMENSIONS ARE IN INCHES [mm].
4. FITS MIL-C-17 AND EQUIVALENT CABLES.

DWG TITLE
PE44693

PASTERNAK ENTERPRISES, INC.
P.O. BOX 16759, IRVINE, CA 92623
PHONE (949) 261-1920 FAX (949) 261-7451
WEB ADDRESS: www.pasternack.com
E-MAIL ADDRESS: sales@pasternack.com
COAXIAL & FIBER OPTICS



2231

SIZE A

SCALE N/A

CAD FILE 062111

FSCM NO. 53919

REV. -

Formable 141 Semi-rigid Coax Cable with Tinned Copper Braid Outer Conductor

TECHNICAL DATA SHEET

PE-SR402FL

Formable 141 Semi-rigid Coax Cable with Tinned Copper Braid Outer Conductor

Formable semi-rigid coax is a hand formable version of standard semi-rigid that does not require complicated and costly preformed cable assemblies. Because the dimensions and electrical characteristics are so closely matched to semi-rigid coax, standard semi-rigid connectors can be used. The tin soaked copper braid outer shield provides excellent RF shielding.

- Dimensionally the same as standard solid outer conductor semi-rigid coax
- Standard semi-rigid connectors can be used
- Cable is hand formable and does not require special tools to bend
- Connectors are easily soldered to Tin soaked outer conductor
- Cable can be formed more than once without damage to outer conductor
- High RF Shielding >100 dB

Configuration

Inner Conductor Material and Plating	Copper, Silver
Dielectric Type	PTFE
Shield Materials	Tinned Copper Braid

Electrical Specifications

Impedance, Ohms	50
Velocity of Propagation, %	69.5
Time Delay, ns/ft [ns/m]	1.43 [4.69]
Maximum Operating Frequency, GHz	34
RF Shielding, dB	100
Capacitance, pF/ft [pF/m]	29 [95.14]
Maximum Operating Voltage, Volts	1,900

Electrical Specifications by Frequency

Frequency 1

Frequency, MHz	1000
Attenuation, dB/100ft [dB/100m]	11.88 [38.98]

Frequency 2

Frequency, GHz	5
Attenuation, dB/100ft [dB/100m]	28 [91.86]

Frequency 3

Frequency, GHz	10
Attenuation, dB/100ft [dB/100m]	42.1 [138.12]

Frequency 4

Frequency, GHz	20
Attenuation, dB/100ft [dB/100m]	64 [209.97]

Click the following link (or enter part number in "SEARCH" on website) to obtain additional part information including price, inventory and certifications: [Formable 141 Semi-rigid Coax Cable with Tinned Copper Braid Outer Conductor PE-SR402FL](#)

The information contained in this document is accurate to the best of our knowledge and representative of the part described herein. It may be necessary to make modifications to the part and/or the documentation of the part, in order to implement improvements. Pasternack reserves the right to make such changes as required. Unless otherwise stated, all specifications are nominal.

Formable 141 Semi-rigid Coax Cable with
Tinned Copper Braid Outer Conductor

TECHNICAL DATA SHEET

PE-SR402FL

Mechanical Specifications

Temperature

Operating Range, deg C -55 to +125

Inner Conductor

Number of Strands 1
Material Copper
Plating Silver
Diameter, in [mm] 0.036 [0.91]

Dielectric:

Type PTFE
Diameter, in [mm] 0.117 [2.97]

Shield:

Number of 1
Material 1 Tinned Copper Braid
Diameter, in [mm] 0.139 [3.53]

Jacket:

One Time Minimum Bend Radius, in [mm] 0.315 [8]
Repeated Minimum Bend Radius, in [mm] 1.57 [39.88]
Weight, lbs/ft [Kg/m] 0.027 [0.04]

Compliance Certifications (visit www.Pasternack.com for current document)

RoHS Compliant Yes

Plotted and Other Data

Notes: Values at 25 °C, sea level

Formable 141 Semi-rigid Coax Cable with Tinned Copper Braid Outer Conductor from Pasternack Enterprises has same day shipment for domestic and International orders. Our RF, microwave and fiber optic products maintain a 99% availability and are part of the broadest selection in the industry.

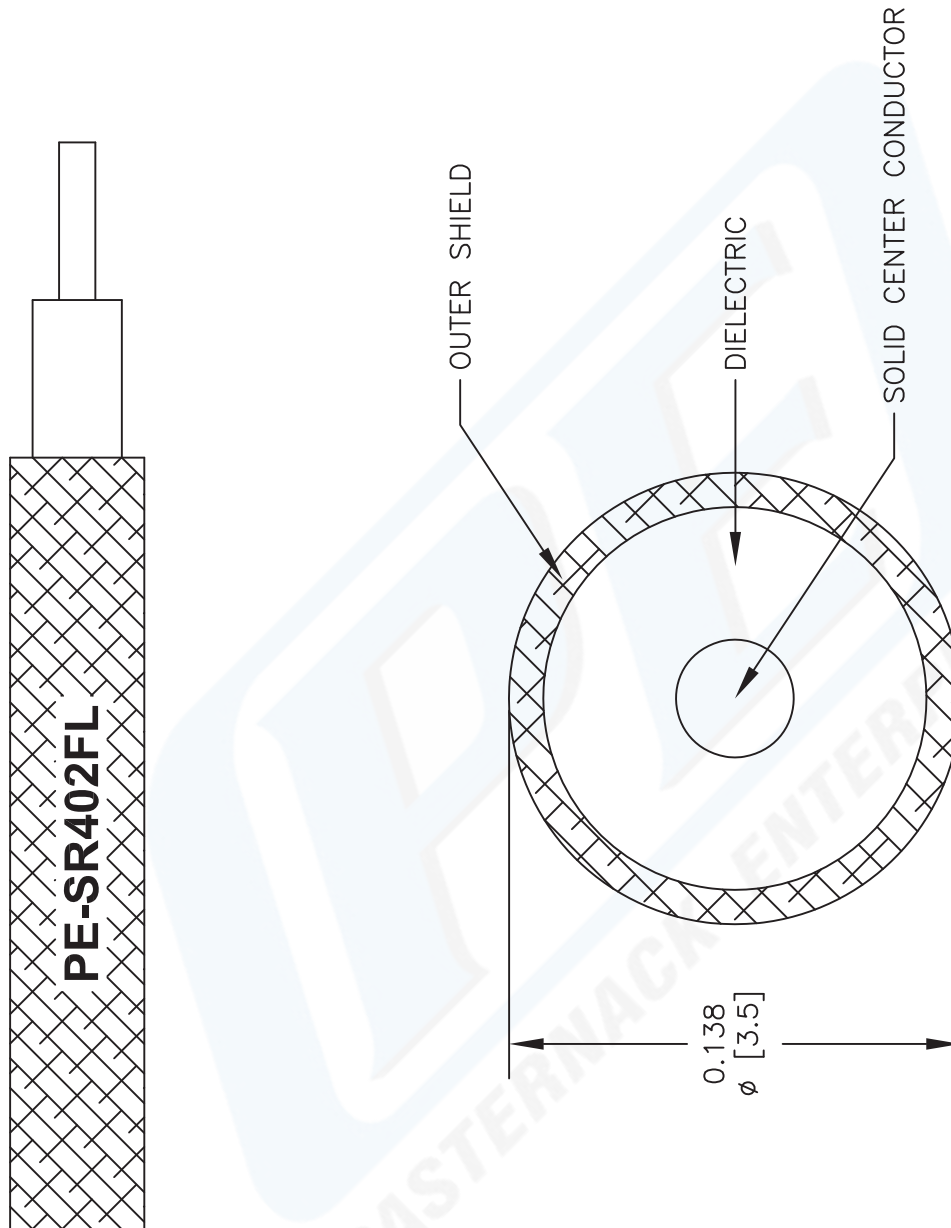
Click the following link (or enter part number in "SEARCH" on website) to obtain additional part information including price, inventory and certifications: [Formable 141 Semi-rigid Coax Cable with Tinned Copper Braid Outer Conductor PE-SR402FL](http://www.pasternack.com/formable-0.141-semirigid-replacement-50-ohm-coax-cable-tinned-braid-pe-sr402fl-p.aspx)

URL: <http://www.pasternack.com/formable-0.141-semirigid-replacement-50-ohm-coax-cable-tinned-braid-pe-sr402fl-p.aspx>

The information contained in this document is accurate to the best of our knowledge and representative of the part described herein. It may be necessary to make modifications to the part and/or the documentation of the part, in order to implement improvements. Pasternack reserves the right to make such changes as required. Unless otherwise stated, all specifications are nominal.

PE-SR402FL CAD Drawing

Formable 141 Semi-rigid Coax Cable with Tinned Copper Braid Outer Conductor



NOTES:
 1. UNLESS OTHERWISE SPECIFIED ALL DIMENSIONS ARE NOMINAL.
 2. ALL SPECIFICATIONS ARE SUBJECT TO CHANGE WITHOUT NOTICE AT ANY TIME.
 3. DIMENSIONS ARE IN INCHES [mm].

DWG TITLE

PE-SR402FL

FSCM NO. 53919

2233

SIZE A

SCALE N/A

CAD FILE 082609-B

PE PASTERNAK®
 Pasternack Enterprises, Inc.
 P.O. Box 16759 | Irvine | CA | 92623

Phone: (949) 261-1920 | Fax: (949) 261-7451

Website: www.pasternack.com | E-Mail: sales@pasternack.com