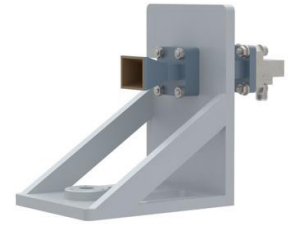


## WR-42 Standard Gain Horn with 10 dBi gain, 2.92mm Female connector, with Pre-Installed L Mount



### PE2WAN042-10KF

#### Features

- 18 GHz to 26.5 GHz
- WR-42 Waveguide Band
- 10 dBi Nominal Gain
- 2.92mm Female Connector
- Pre-Installed L Mount
- Integrates with Positioning Systems

#### Applications

- Antenna Measurements
- Wireless Communication
- Laboratory Use
- Microwave Radio Systems
- Radome Testing
- Automotive Antenna Test Solutions
- Radar Cross Section
- Satellite Antenna Testing

#### Description

The PE2WAN042-10KF standard gain horn antenna with pre-installed L mount (also known as waveguide horn) from Pasternack is part of our comprehensive selection of waveguide antennas. This standard gain horn is mated with a WR-42 to 2.92mm female waveguide to coaxial adapter and operates from 18 GHz to 26.5 GHz.

Our PE2WAN042-10KF standard gain horn antenna with pre-installed L mount has a nominal gain of 10 dBi with a Horizontal and Vertical HPBW (Half Power Beam Width) of 52.1 dB and 51.6 dB respectively. Pasternack's 2.92mm female to WR-42 standard gain horns are available in 10, 15 and 20 dBi models with pyramidal shape and connectorized input.

Waveguide antennas, such as the PE2WAN042-10KF are used in a wide variety of applications due to the high-power handling capability, low loss, high directivity, and near constant electrical performance. Our WR-42 waveguide antennas with 2.92mm female interface is part of over 40,000 RF, microwave and millimeter wave components from Pasternack available worldwide and ship same day.

#### Configuration

Design	WR-42
Coaxial Interface	2.92mm Female

#### Electrical Specifications

Description	Minimum	Typical	Maximum	Units
Frequency Range	18		26.5	GHz
Gain		10		
Horizontal Half Power Beam Width		52.1		Degrees
Vertical Half Power Beam Width		51.6		
<b>Waveguide to Coaxial Adapter</b>				
VSWR			1.4:1	

#### Mechanical Specifications

<b>Size</b>	
Length	6.984 in [177.39 mm]
Width	5.602 in [142.29 mm]
Height	4.032 in [102.41 mm]
Weight	0.7215 lbs [327.27 g]

WR-42 Standard Gain Horn with 10 dBi gain, 2.92mm  
Female connector, with Pre-Installed L Mount



## PE2WAN042-10KF

### RF Connector

Type 2.92mm Female

### Waveguide Interface

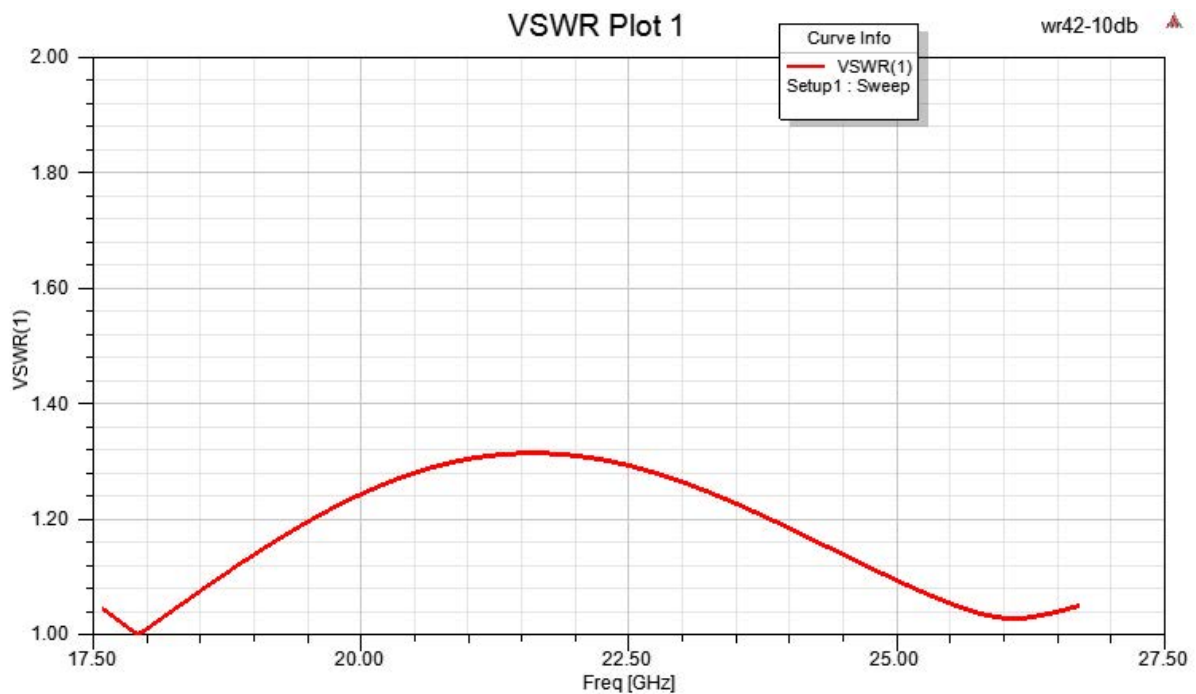
Waveguide Size WR-42

**Compliance Certifications** (see [product page](#) for current document)

### Plotted and Other Data

Notes:

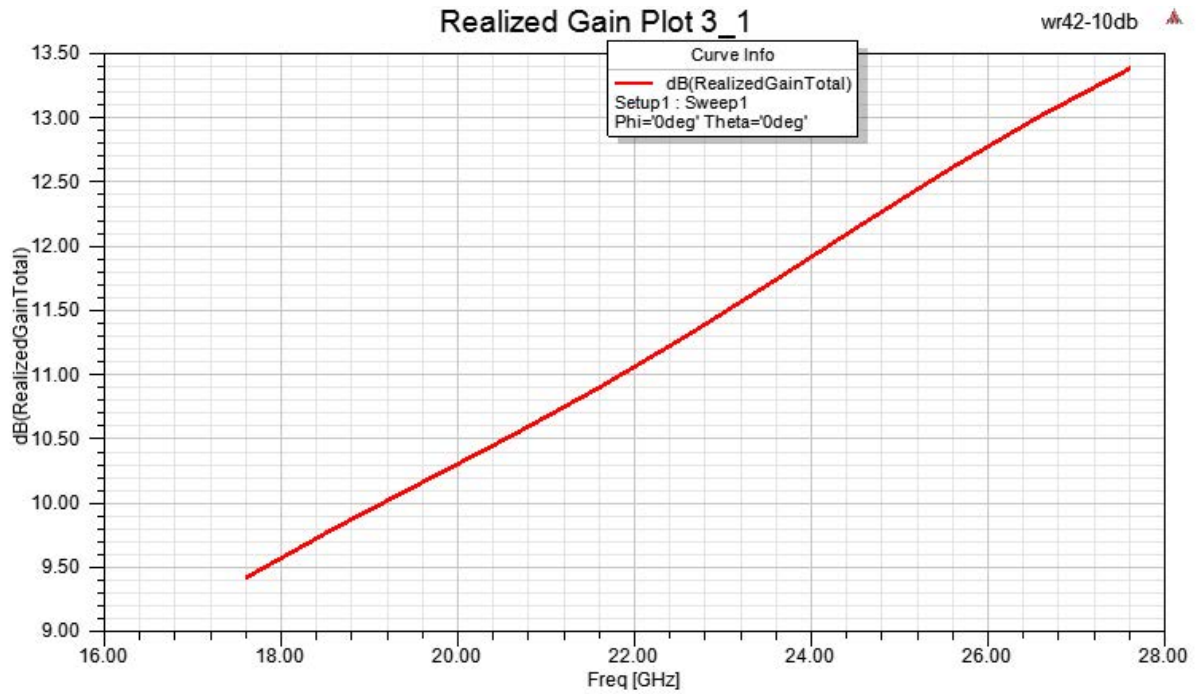
### Typical Performance Data



WR-42 Standard Gain Horn with 10 dBi gain, 2.92mm  
Female connector, with Pre-Installed L Mount



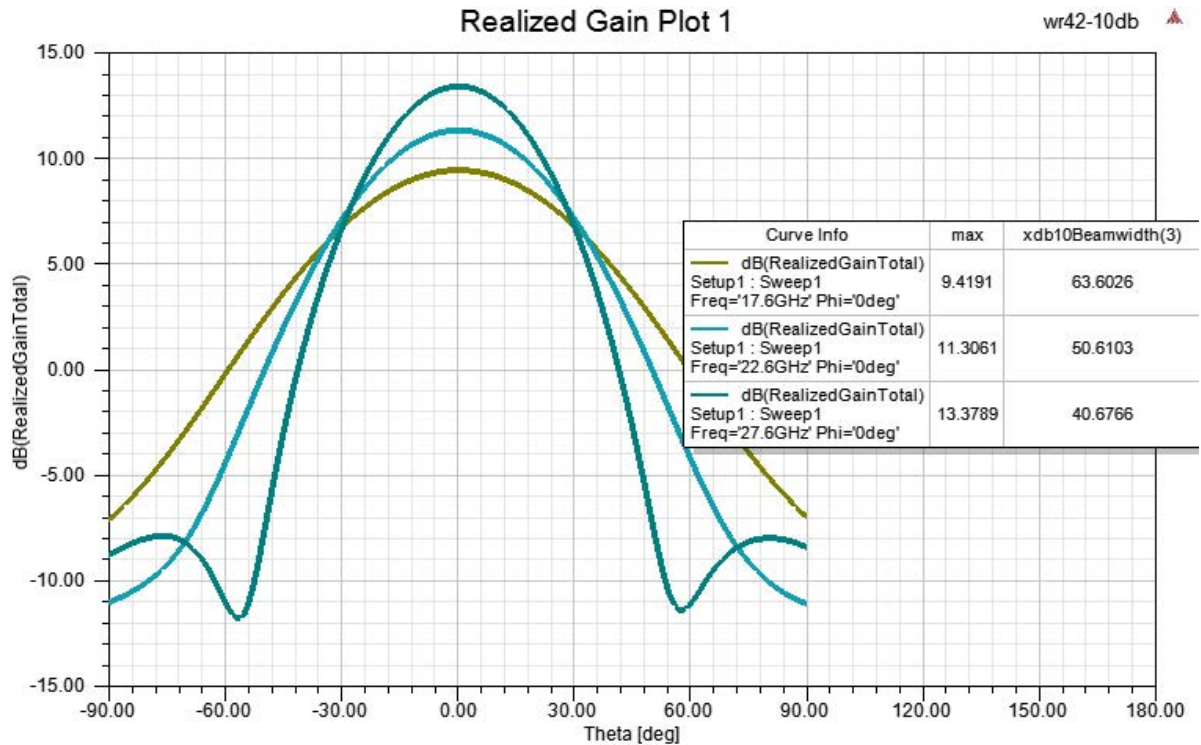
**PE2WAN042-10KF**



WR-42 Standard Gain Horn with 10 dBi gain, 2.92mm  
Female connector, with Pre-Installed L Mount



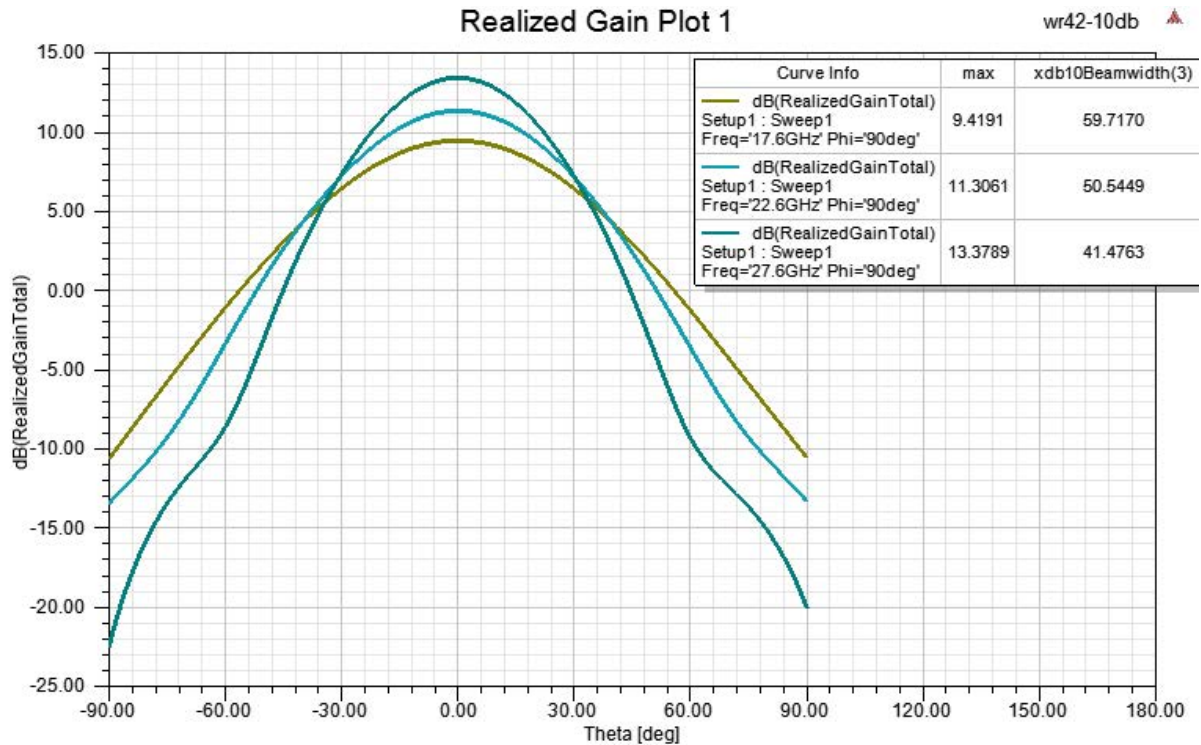
**PE2WAN042-10KF**



WR-42 Standard Gain Horn with 10 dBi gain, 2.92mm  
Female connector, with Pre-Installed L Mount



**PE2WAN042-10KF**



WR-42 Standard Gain Horn with 10 dBi gain, 2.92mm Female connector, with Pre-Installed L Mount from Pasternack Enterprises has same day shipment for domestic and International orders. Our RF, microwave and millimeter wave products maintain a 99.4% availability and are part of the broadest selection in the industry.

Click the following link (or enter part number in "SEARCH" on website) to obtain additional part information including price, inventory and certifications: [WR-42 Standard Gain Horn with 10 dBi gain, 2.92mm Female connector, with Pre-Installed L Mount PE2WAN042-10KF](#)

URL: <https://www.pasternack.com/wr-42-waveguide-standard-gain-horn-antenna-10-dbi-2.92mm-pe2wan042-10kf-p.aspx>

The information contained within this document is accurate to the best of our knowledge and representative of the part described herein. It may be necessary to make modifications to the part and/or the documentation of the part in order to implement improvements. Pasternack Enterprises reserves the right to make such changes as required. Unless otherwise stated, all specifications are nominal. Pasternack Enterprises does not make any representation or warranty regarding the suitability of the part described herein for any particular purpose, and Pasternack Enterprises does not assume liability arising out of the use of any part or document.

WR-42 Standard Gain Horn with 10 dBi gain, 2.92mm Female connector, with Pre-Installed L Mount

