



N Male to HN Male Cable Using RG213 Coax , LF Solder

RF Cable Assemblies Technical Data Sheet

PE3125LF

Configuration

- Connector 1: N Male
- Connector 2: HN Male
- Cable Type: RG213
- Coax Flex Type: Flexible

Features

- Max Frequency 1 GHz
- 66% Phase Velocity
- PVC Jacket

Applications

- General Purpose
- Laboratory Use

Description

Pasternack's PE3125LF type N male to HN male cable using RG213 coax is part of our full line of RF components available for same-day shipping. Pasternack's flexible RF cable assemblies are ideal for applications where tight bends and flexure are required. This Pasternack type N to HN cable assembly has a male to male gender configuration with 50 ohm flexible RG213 coax. The PE3125LF type N male to HN male cable assembly operates to 1 GHz.

Custom versions of most RF cable assemblies can be built and shipped same day. Custom cable assembly lengths can be obtained by specifying the desired length on the web site at time of order or by contacting a sales representative. Other available RF cable assembly value added services include connector orientation or clocking, heat shrink booting and custom labeling. RF testing can also be performed to document the electrical performance of your cable assembly.

Click the following link (or enter part number in "SEARCH" on website) to obtain additional part information including price, inventory and certifications: [N Male to HN Male Cable Using RG213 Coax , LF Solder PE3125LF](#)



N Male to HN Male Cable Using RG213 Coax , LF Solder

RF Cable Assemblies Technical Data Sheet

PE3125LF

Electrical Specifications

Description	Minimum	Typical	Maximum	Units
Frequency Range	DC		1,000	MHz
VSWR			1.4:1	
Velocity of Propagation		66		%
Capacitance		30.8 [101.05]		pF/ft [pF/m]
Operating Voltage (AC)			1,000	Vrms

Specifications by Frequency

Description	F1	F2	F3	F4	F5	Units
Frequency	100	250	500	1,000		MHz
Insertion Loss (Typ.)	0.021	0.034	0.053	0.08		dB/ft
	0.07	0.11	0.17	0.26		dB/m

Electrical Specification Notes:

Insertion Loss does not include the loss of the connectors. Insertion Loss is estimated as 0.1 dB per connector.

Mechanical Specifications

Cable Assembly

Weight 0.286 lbs [129.73 g]

Cable

Cable Type RG213
 Impedance 50 Ohms
 Inner Conductor Type Stranded
 Inner Conductor Material and Plating Copper
 Dielectric Type PE
 Number of Shields 1
 Shield Layer 1 Copper Braid
 Jacket Material PVC, Black
 Jacket Diameter 0.405 in [10.29 mm]
 Repeated Minimum Bend Radius 1.6 in [40.64 mm]

Click the following link (or enter part number in "SEARCH" on website) to obtain additional part information including price, inventory and certifications: [N Male to HN Male Cable Using RG213 Coax , LF Solder PE3125LF](#)



N Male to HN Male Cable Using RG213 Coax , LF Solder

RF Cable Assemblies Technical Data Sheet

PE3125LF

Connectors

Description	Connector 1	Connector 2
Type	N Male	HN Male
Specification	MIL-STD-348A	MIL-STD-348A
Impedance	50 Ohms	50 Ohms
Contact Material and Plating	Brass, Gold	Brass, Gold
Contact Plating Specification	30 µin minimum	30 µin minimum
Dielectric Type	PTFE	PTFE
Body Material and Plating	Brass, Nickel	Brass, Nickel
Body Plating Specification	100 µin minimum	100 µin minimum
Coupling Nut Material and Plating	Brass, Nickel	Brass, Nickel
Coupling Nut Plating Specification	100 µin minimum	100 µin minimum

Environmental Specifications

Temperature

Operating Range

-25 to +70 deg C

Compliance Certifications (see [product page](#) for current document)

Plotted and Other Data

Notes:

Click the following link (or enter part number in "SEARCH" on website) to obtain additional part information including price, inventory and certifications: [N Male to HN Male Cable Using RG213 Coax , LF Solder PE3125LF](#)



N Male to HN Male Cable Using RG213 Coax , LF Solder

RF Cable Assemblies Technical Data Sheet

PE3125LF

How to Order

Part Number Configuration:

PE3125LF

- **xx**

uu

Unit of Measure:
cm = Centimeters
<blank> = Inches
Length
Base Number

Example: PE3125LF-12 = 12 inches long cable
PE3125LF-100cm = 100 cm long cable

N Male to HN Male Cable Using RG213 Coax , LF Solder from Pasternack Enterprises has same day shipment for domestic and International orders. Our RF, microwave and millimeter wave products maintain a 99.4% availability and are part of the broadest selection in the industry.

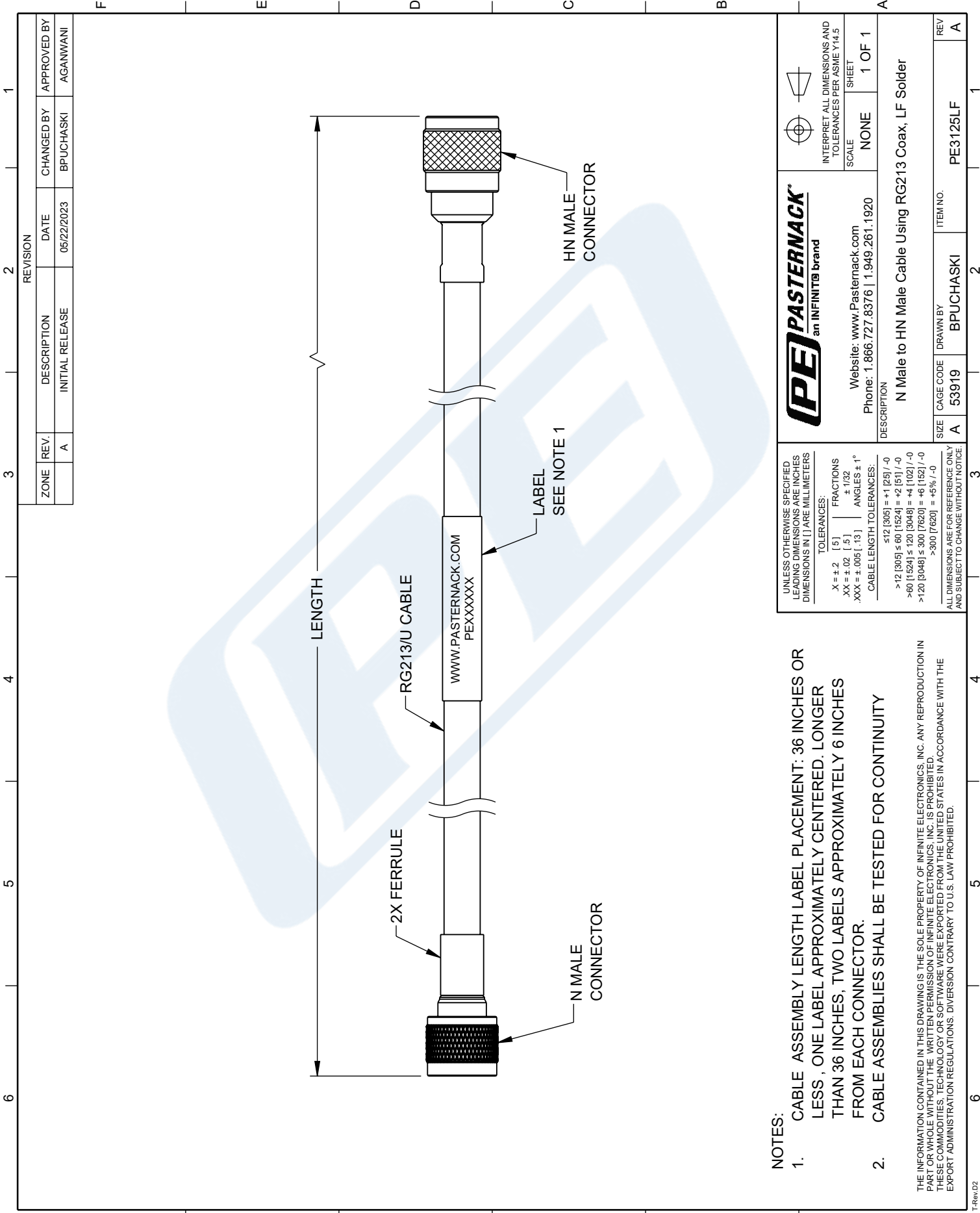
Click the following link (or enter part number in "SEARCH" on website) to obtain additional part information including price, inventory and certifications: [N Male to HN Male Cable Using RG213 Coax , LF Solder PE3125LF](#)

URL: <https://www.pasternack.com/n-male-to-hn-male-cable-using-rg213-lf-solder-pe3125lf-p.aspx>

The information contained in this document is accurate to the best of our knowledge and representative of the part described herein. It may be necessary to make modifications to the part and/or the documentation of the part, in order to implement improvements. Pasternack reserves the right to make such changes as required. Unless otherwise stated, all specifications are nominal. Pasternack does not make any representation or warranty regarding the suitability of the part described herein for any particular purpose, and Pasternack does not assume any liability arising out of the use of any part or documentation.

PE3125LF CAD Drawing

N Male to HN Male Cable Using RG213 Coax , LF Solder



NOTES:

1. CABLE ASSEMBLY LENGTH LABEL PLACEMENT: 36 INCHES OR LESS , ONE LABEL APPROXIMATELY CENTERED. LONGER THAN 36 INCHES, TWO LABELS APPROXIMATELY 6 INCHES FROM EACH CONNECTOR.
2. CABLE ASSEMBLIES SHALL BE TESTED FOR CONTINUITY

THE INFORMATION CONTAINED IN THIS DRAWING IS THE SOLE PROPERTY OF INFINITE ELECTRONICS, INC. ANY REPRODUCTION IN PART OR WHOLE WITHOUT THE WRITTEN PERMISSION OF INFINITE ELECTRONICS, INC. IS PROHIBITED. THESE COMMODITIES, TECHNOLOGY OR SOFTWARE WERE EXPORTED FROM THE UNITED STATES IN ACCORDANCE WITH THE EXPORT ADMINISTRATION REGULATIONS. DIVERSION CONTRARY TO U.S. LAW PROHIBITED.

 PASTERNAK[®] an INFINITE [®] brand			
		INTERPRET ALL DIMENSIONS AND TOLERANCES PER ASME Y14.5	
Website: www.Pasternack.com Phone: 1.866.727.8376 1.949.261.1920		SCALE	SHEET
		NONE	1 OF 1
DESCRIPTION N Male to HN Male Cable Using RG213 Coax, LF Solder			
SIZE	CAGE CODE	DRAWN BY	ITEM NO.
A	53919	BPUCHASKI	PE3125LF
REV		A	

UNLESS OTHERWISE SPECIFIED LEADING DIMENSIONS ARE INCHES DIMENSIONS IN [] ARE MILLIMETERS	
TOLERANCES:	
X = ± .2	[.5]
XX = ± .02	[.13]
XXX = ± .005	[.13]
CABLE LENGTH TOLERANCES:	
ANGLES ± 1°	
± 1/32	
± 1/64	
± 1/128	
± 1/256	
± 1/512	
± 1/1024	
± 1/2048	
± 1/4096	
± 1/8192	
± 1/16384	
± 1/32768	
± 1/65536	
± 1/131072	
± 1/262144	
± 1/524288	
± 1/1048576	
± 1/2097152	
± 1/4194304	
± 1/8388608	
± 1/16777216	
± 1/33554432	
± 1/67108864	
± 1/134217728	
± 1/268435456	
± 1/536870912	
± 1/1073741824	
± 1/2147483648	
± 1/4294967296	
± 1/8589934592	
± 1/17179869184	
± 1/34359738368	
± 1/68719476736	
± 1/137438953472	
± 1/274877906944	
± 1/549755813888	
± 1/1099511627776	
± 1/2199023255552	
± 1/4398046511104	
± 1/8796093022208	
± 1/17592186044416	
± 1/35184372088832	
± 1/70368744177664	
± 1/140737488355328	
± 1/281474976710656	
± 1/562949953421312	
± 1/1125899906842624	
± 1/2251799813685248	
± 1/4503599627370496	
± 1/9007199254740992	
± 1/18014398509481984	
± 1/36028797018963968	
± 1/72057594037927936	
± 1/144115188075855872	
± 1/288230376151711744	
± 1/576460752303423488	
± 1/1152921504606846976	
± 1/2305843009213693952	
± 1/4611686018427387904	
± 1/9223372036854775808	
± 1/18446744073709551616	
± 1/36893488147419103232	
± 1/73786976294838206464	
± 1/147573952589676412928	
± 1/295147905179352825856	
± 1/590295810358705651712	
± 1/1180591620717411303424	
± 1/2361183241434822606848	
± 1/4722366482869645213696	
± 1/9444732965739290427392	
± 1/18889465931478580854784	
± 1/37778931862957161709568	
± 1/75557863725914323419136	
± 1/151115727451828646838272	
± 1/302231454903657293676544	
± 1/604462909807314587353088	
± 1/1208925819614629174706176	
± 1/2417851639229258349412352	
± 1/4835703278458516698824704	
± 1/9671406556917033397649408	
± 1/19342813113834066795298816	
± 1/38685626227668133590597632	
± 1/77371252455336267181195264	
± 1/154742504910672534362390528	
± 1/309485009821345068724781056	
± 1/618970019642690137449562112	
± 1/1237940039285380274899124224	
± 1/2475880078570760549798248448	
± 1/4951760157141521099596496896	
± 1/9903520314283042199192993792	
± 1/19807040628566084398385987584	
± 1/39614081257132168796771975168	
± 1/79228162514264337593543950336	
± 1/158456325028528675187087900672	
± 1/316912650057057350374175801344	
± 1/633825300114114700748351602688	
± 1/1267650600228229401496703205376	
± 1/2535301200456458802993406410752	
± 1/5070602400912917605986812821504	
± 1/10141204801825835211973625643008	
± 1/20282409603651670423947251286016	
± 1/40564819207303340847894502572032	
± 1/81129638414606681695789005144064	
± 1/162259276829213363391578010288128	
± 1/324518553658426726783156020576256	
± 1/649037107316853453566312041152512	
± 1/1298074214633706907132624082305024	
± 1/2596148429267413814265248164610048	
± 1/5192296858534827628530496329220096	
± 1/10384593717069655257060992658440192	
± 1/20769187434139310514121985316880384	
± 1/41538374868278621028243970602803445728	
± 1/83076749736557242056487941267521536	
± 1/166153499473114484112975882535043072	
± 1/332306998946228968225951765070086144	
± 1/664613997892457936451903530140172288	
± 1/13292279957849158729038070602803445728	
± 1/265845599156983174580736966543256435911368192	
± 1/5316911983139663491615228241121378304	
± 1/10633823966279326983230456482242756608	
± 1/21267647932558653966460912964485513216	
± 1/425352958651173079329218259289710264384	
± 1/85070591730234615865843651857942052864	
± 1/170141183460469231731687303715884105728	
± 1/340282366920938463463374607431768211456	
± 1/680564733841876926926749214863536422912	
± 1/1361129467683753853853498429727072845824	
± 1/272225893536750770770699685945414569152	
± 1/544451787073501541541399371890829138304	
± 1/1088903574147003083082798743781658276608	
± 1/2177807148294006166165597487563316553216	
± 1/43556142965880123323311949751266331064384	
± 1/87112285931760246646623899502532662128768	
± 1/17422457186352049329324779900506524255536	
± 1/34844914372704098658649559801013048511072	
± 1/69689828745408197317299119602026097022144	
± 1/139379657490816394634598239204052194044288	
± 1/278759314981632789269196478408104388088576	
± 1/557518629963265578538392956816208776177152	
± 1/1115037259926531157076785913632417434354304	
± 1/2230074519853062314153571827264834868708608	
± 1/4460149039706124628307143654529669737417216	
± 1/8920298079412249256614287309059339474834432	
± 1/17840596158824498513228574618118678949668864	
± 1/356811923176489970264571492362373578993376	
± 1/713623846352979940529142984724747157986752	
± 1/1427247692705959881058285969449494315973504	
± 1/2854495385411919762116571938898988631947008	
± 1/5708990770823839524233143877797977263894016	
± 1/11417981541647679048466287755595954527788032	
± 1/22835963083295358096932575511191909055576064	
± 1/45671926166590716193865151022383818111152128	
± 1/91343852333181432387730302044767636222304256	
± 1/18268770466636286477546060408953527244460512	
± 1/36537540933272572955092120817907054488921024	
± 1/73075081866545145910184241635073647593310257152	
± 1/146150163733090291820368483271628217955684096	
± 1/292300327466180583640736966543256435911368192	
± 1/584600654932361167281473933086512871822736384	
± 1/1169201309864722334562947866173025743645472768	
± 1/2338402619729444669125895732346051487290945536	
± 1/4676805239458889338251791464692102974581891072	
± 1/9353610478917778676503582929384205949163782144	
± 1/18707220957835557353007165858757707567774851661824	
± 1/3741444191567111470601433171753682379665512857152	
± 1/74828883831342229412028663435073647593310257152	
± 1/149657767662684458824057326870147295186620514304	
± 1/299315535325368917648114653740294590373241028608	
± 1/598631070650737835296229307480589180746482057216	
± 1/1197262141301475670592458614961178361492964114432	
± 1/2394524282602951341184917229922356722985928228864	
± 1/4789048565205902682369834459844713445971856457728	
± 1/9578097130411805364793668919689426891943712915456	
± 1/19156194260823610729479337839378853783887425830912	
± 1/38312388521647221458958675678757707567774851661824	
± 1/76624771691533509547947367790095786378802896203415552	
± 1/153249554086588885835834702715030830271099406647296	
± 1/306499108173177771671669405430061665542198813294592	
± 1/612998216346355543343338810860123331084397626589184	
± 1/1225996432692711086686677621720246662168795253178368	
± 1/2451992865385422173373355243440493324337590506356736	
± 1/4903985730770844346746710486880986648675181012713472	
± 1/9807971461541688693493420973761973297350362025426944	
± 1/19615942922883377386986841947523946594700724050853888	
± 1/39231885845766754773973683895047893189401448101707776	
± 1/78463771691533509547947367790095786378802896203415552	
± 1/156927543383067019095894735580	

ALL DIMENSIONS ARE FOR REFERENCE ONLY
AND SUBJECT TO CHANGE WITHOUT NOTICE