

SHV Plug to HN Male Cable Using RG213 Coax, LF Solder



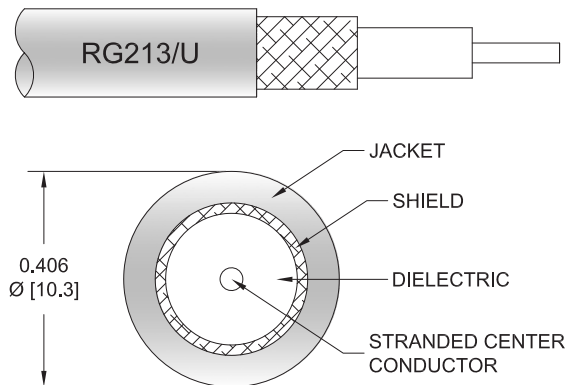
PE3148LF

Configuration

- Connector 1: SHV Plug
- Connector 2: HN Male
- Cable Type: RG213
- Coax Flex Type: Flexible

Features

- Max Frequency 300 MHz
- 66% Phase Velocity
- PVC Jacket



Applications

- General Purpose
- Laboratory Use

Description

Pasternack's PE3148LF SHV plug to HN male cable using RG213 coax is part of our full line of RF components available for same-day shipping. Pasternack's flexible RF cable assemblies are ideal for applications where tight bends and flexure are required. This Pasternack SHV to HN cable assembly has a plug to male gender configuration with 50 ohm flexible RG213 coax. The PE3148LF SHV plug to HN male cable assembly operates to 300 MHz.

Custom versions of most RF cable assemblies can be built and shipped same day. Custom cable assembly lengths can be obtained by specifying the desired length on the web site at time of order or by contacting a sales representative. Other available RF cable assembly value added services include connector orientation or clocking, heat shrink booting and custom labeling. RF testing can also be performed to document the electrical performance of your cable assembly.

Electrical Specifications

Description	Minimum	Typical	Maximum	Units
Frequency Range	DC		300	MHz
Velocity of Propagation		66		%
Capacitance		30.8 [101.05]		pF/ft [pF/m]
Operating Voltage (AC)			1,500	Vrms

Specifications by Frequency

SHV Plug to HN Male Cable Using RG213 Coax, LF Solder



PE3148LF

Part Number	Length	Description	F1	F2	F3	F4	Units	Weight (lbs)
		Frequency	50	100	250	300	MHz	
PE3148LF	Custom Lengths Available	Insertion Loss (Typ.)	0.011	0.022	0.03	0.035	dB/ft	
			0.04	0.08	0.1	0.12	dB/m	
PE3148LF-24	24 inch	Insertion Loss (Typ.)	0.23	0.25	0.26	0.27	dB	0.368
PE3148LF-36	36 inch	Insertion Loss (Typ.)	0.24	0.27	0.29	0.31	dB	0.469
PE3148LF-48	48 inch	Insertion Loss (Typ.)	0.25	0.29	0.32	0.34	dB	0.57
PE3148LF-60	60 inch	Insertion Loss (Typ.)	0.26	0.31	0.35	0.38	dB	0.671
PE3148LF-72	72 inch	Insertion Loss (Typ.)	0.27	0.34	0.38	0.41	dB	0.772

The insertion loss data for the base model does not include loss due to the connectors. Each length includes insertion loss due to the connectors.

Loss due to Connector 1:	0.1 dB
Loss due to Connector 2:	0.1 dB
Base Weight:	0.266 pounds
Additional Weight per Inch:	0.00842 pounds

Mechanical Specifications

Cable Assembly

Weight	0.266 lbs [120.66 g]
--------	----------------------

Cable

Cable Type	RG213
Impedance	50 Ohms
Inner Conductor Type	Stranded
Inner Conductor Material and Plating	Copper
Dielectric Type	PE
Number of Shields	1
Shield Layer 1	Copper Braid
Jacket Material	PVC, Black
Jacket Diameter	0.405 in [10.29 mm]
Repeated Minimum Bend Radius	1.6 in [40.64 mm]

SHV Plug to HN Male Cable Using RG213 Coax, LF Solder



PE3148LF

Connectors

Description	Connector 1	Connector 2
Type	SHV Plug	HN Male
Specification		MIL-STD-348A
Impedance	50 Ohms	50 Ohms
Configuration	Straight	Straight
Contact Material and Plating	Brass, Gold	Brass, Gold
Contact Plating Specification	30 μinches minimum	30μ in. minimum
Dielectric Type	Teflon	PTFE
Body Material and Plating	Brass, Nickel	Brass, Nickel
Body Plating Specification	100 μinches minimum	100μ in. minimum
Coupling Nut Material and Plating		Brass, Nickel
Coupling Nut Plating Specification		100μ in. minimum

Environmental Specifications

Operating Range Temperature -25 to +70 deg C

Compliance Certifications (see [product page](#) for current document)

Plotted and Other Data

Notes:

SHV Plug to HN Male Cable Using RG213 Coax, LF Solder



PE3148LF

Typical Performance Data

How to Order

Part Number Configuration:

PE3148LF **- xx** **uu**

Unit of Measure:
cm = Centimeters
<blank> = Inches

Length

Base Number

Example: PE3148LF-12 = 12 inches long cable
 PE3148LF-100cm = 100 cm long cable

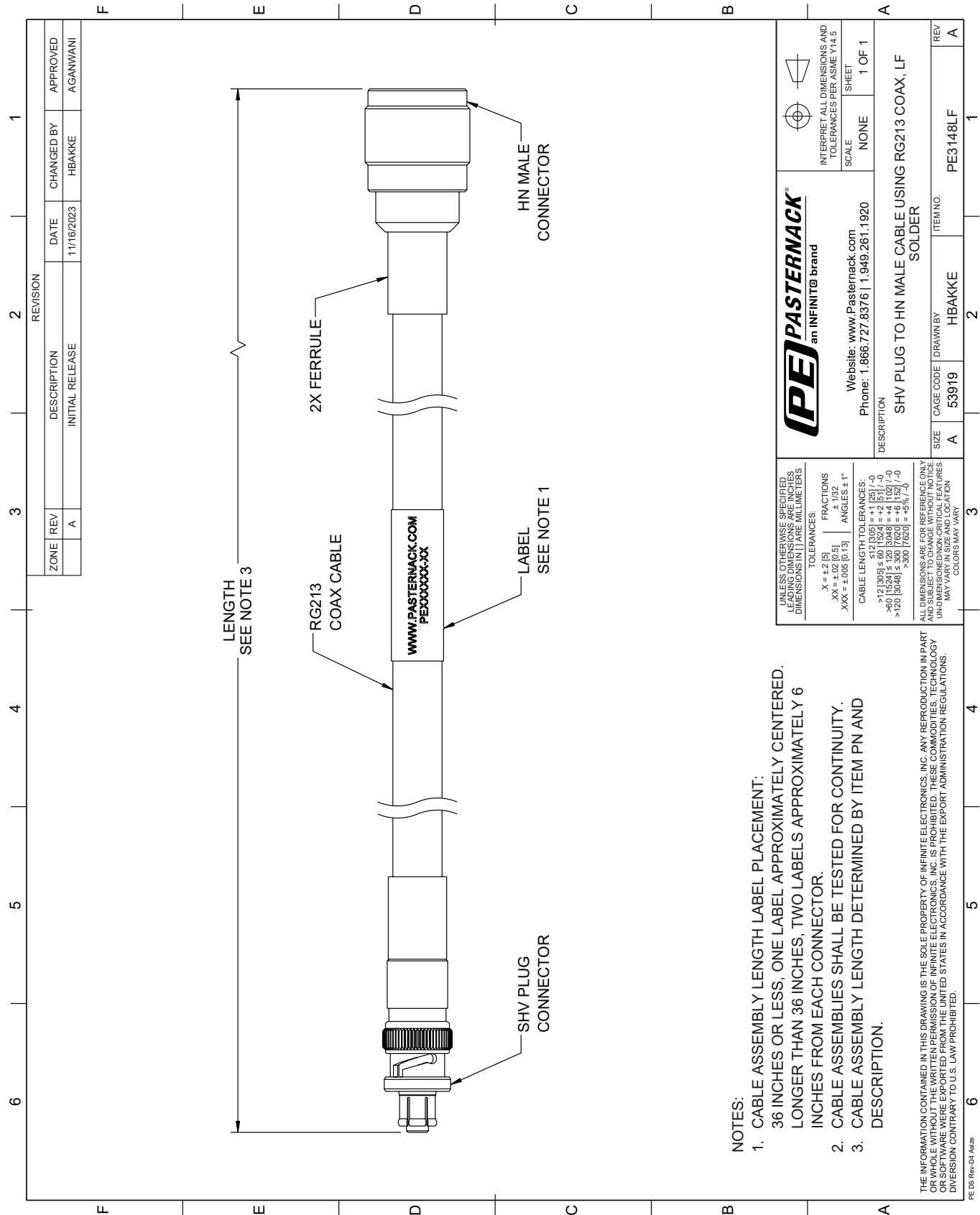
SHV Plug to HN Male Cable Using RG213 Coax, LF Solder from Pasternack Enterprises has same day shipment for domestic and International orders. Our RF, microwave and millimeter wave products maintain a 99.4% availability and are part of the broadest selection in the industry.

Click the following link (or enter part number in "SEARCH" on website) to obtain additional part information including price, inventory and certifications: [SHV Plug to HN Male Cable Using RG213 Coax, LF Solder PE3148LF](#)

URL: <https://www.pasternack.com/shv-plug-to-hn-male-cable-using-rg213-lf-solder-pe3148lf-p.aspx>

The information contained within this document is accurate to the best of our knowledge and representative of the part described herein. It may be necessary to make modifications to the part and/or the documentation of the part in order to implement improvements. Pasternack Enterprises reserves the right to make such changes as required. Unless otherwise stated, all specifications are nominal. Pasternack Enterprises does not make any representation or warranty regarding the suitability of the part described herein for any particular purpose, and Pasternack Enterprises does not assume liability arising out of the use of any part or document.

PE3148LF CAD Drawing
SHV Plug to HN Male Cable Using RG213 Coax, LF Solder



- NOTES:
- 1. CABLE ASSEMBLY LENGTH LABEL PLACEMENT: 36 INCHES OR LESS, ONE LABEL APPROXIMATELY CENTERED. LONGER THAN 36 INCHES, TWO LABELS APPROXIMATELY 6 INCHES FROM EACH CONNECTOR.
 - 2. CABLE ASSEMBLIES SHALL BE TESTED FOR CONTINUITY.
 - 3. CABLE ASSEMBLY LENGTH DETERMINED BY ITEM PN AND DESCRIPTION.

UNLESS OTHERWISE SPECIFIED, LEADING DIMENSIONS ARE IN INCHES, TRAILING DIMENSIONS ARE IN MILLIMETERS		PE PASTERNAK an INFINITE® brand		INTERPRET ALL DIMENSIONS AND TOLERANCES PER ASME Y14.5	
TOLERANCES:		Website: www.pasternack.com		SCALE	
.X = ±.2 [5]		Phone: 1.866.727.8376 1.949.261.1920		NONE	
.XX = ±.02 [0.5]				SHEET	
.XXX = ±.005 [0.13]				1 OF 1	
FRACTIONS ± 1/32					
ANGLES ± 1°					
CABLE LENGTH TOLERANCES:		DESCRIPTION			
>12 [305] ≤ 60 [1524] = ±.125 [-.0]		SHV PLUG TO HN MALE CABLE USING RG213 COAX, LF SOLDER			
>60 [1524] ≤ 120 [3048] = ±.125 [-.0]					
>120 [3048] ≤ 300 [7620] = ±.125 [-.0]					
>300 [7620] = ±.125 [-.0]					
ALL DIMENSIONS ARE FOR REFERENCE ONLY. UNLESS OTHERWISE SPECIFIED, DIMENSIONS MAY VARY IN SIZE AND LOCATION. COLORS MAY VARY.		SIZE		ITEM NO.	
		A		53919	
		DRAWN BY		HBAKKE	
		CAGE CODE		PE3148LF	
		REV		A	