

## SMA Male to BNC Female Bulkhead Cable Using RG316 Coax with HeatShrink



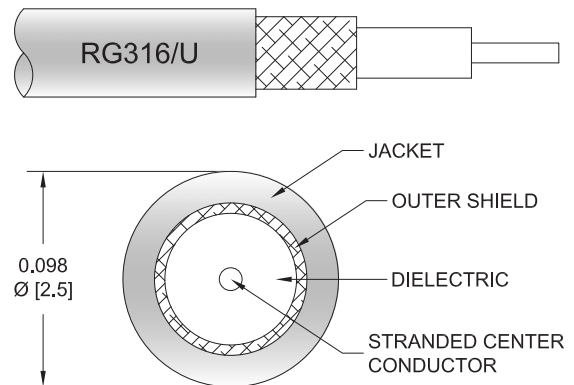
### PE3177/HS

#### Configuration

- Connector 1: SMA Male
- Connector 2: BNC Female Bulkhead
- Cable Type: RG316
- Coax Flex Type: Flexible

#### Features

- Max Frequency 1 GHz
- 69% Phase Velocity
- FEP Jacket



#### Applications

- General Purpose
- Laboratory Use

#### Description

Pasternack's PE3177/HS SMA male to BNC female bulkhead cable using RG316 coax is part of our full line of RF components available for same-day shipping. Pasternack's flexible RF cable assemblies are ideal for applications where tight bends and flexure are required. This Pasternack SMA to BNC cable assembly has a male to female gender configuration with 50 ohm flexible RG316 coax. The PE3177/HS SMA male to BNC female cable assembly operates to 1 GHz. Our RF cable assembly with BNC bulkhead interface allows designers to create external connections on their product enclosures, and can be used in a variety of other rack mount and panel mount applications.

Custom versions of most RF cable assemblies can be built and shipped same day. Custom cable assembly lengths can be obtained by specifying the desired length on the web site at time of order or by contacting a sales representative. Other available RF cable assembly value added services include connector orientation or clocking, heat shrink booting and custom labeling. RF testing can also be performed to document the electrical performance of your cable assembly.

#### Electrical Specifications

Description	Minimum	Typical	Maximum	Units
Frequency Range	DC		1,000	MHz
VSWR			1.4:1	
Velocity of Propagation		69		%
Operating Voltage (AC)			335	Vrms
Jacket Spark			2,000	Vrms

#### Specifications by Frequency

## SMA Male to BNC Female Bulkhead Cable Using RG316 Coax with HeatShrink



### PE3177/HS

Part Number	Length	Description	F1	F2	F3	F4	F5	Units	Weight (lbs)
		Frequency	50	100	250	500	1000	MHz	
PE3177/HS	Custom Lengths Available	Insertion Loss (Typ.)	0.075	0.11	0.16	0.238	0.38	dB/ft	
			0.25	0.37	0.53	0.79	1.25	dB/m	
PE3177/HS-12	12 inch	Insertion Loss (Typ.)	0.28	0.31	0.36	0.44	0.58	dB	0.067
PE3177/HS-24	24 inch	Insertion Loss (Typ.)	0.35	0.42	0.52	0.68	0.96	dB	0.078
PE3177/HS-36	36 inch	Insertion Loss (Typ.)	0.43	0.53	0.68	0.92	1.34	dB	0.088
PE3177/HS-48	48 inch	Insertion Loss (Typ.)	0.5	0.64	0.84	1.16	1.72	dB	0.098
PE3177/HS-72	72 inch	Insertion Loss (Typ.)	0.65	0.86	1.16	1.63	2.48	dB	0.118

The insertion loss data for the base model does not include loss due to the connectors. Each length includes insertion loss due to the connectors.

Loss due to Connector 1:	0.1 dB
Loss due to Connector 2:	0.1 dB
Base Weight:	0.067 pounds
Additional Weight per Inch:	0.00084 pounds

### Mechanical Specifications

#### Cable Assembly

Width/Diameter	0.5 in [12.7 mm]
Weight	0.057 lbs [25.85 g]

#### Cable

Cable Type	RG316
Impedance	50 Ohms
Inner Conductor Type	Stranded
Inner Conductor Material and Plating	Copper Clad Steel, Silver
Dielectric Type	PTFE
Number of Shields	1
Shield Layer 1	Silver Plated Copper Braid
Jacket Material	FEP, Tan
Jacket Diameter	0.102 in [2.59 mm]

## SMA Male to BNC Female Bulkhead Cable Using RG316 Coax with HeatShrink



### PE3177/HS

#### Connectors

Description	Connector 1	Connector 2
Type	SMA Male	BNC Female Bulkhead
Specification	MIL-STD-348A	
Impedance	50 Ohms	50 Ohms
Configuration	Straight	Straight
Contact Material and Plating	Brass, Gold	Brass, Gold
Contact Plating Specification	30 µin minimum	30 µin minimum
Dielectric Type	PTFE	PTFE
Body Material and Plating	Brass, Nickel	Brass, Nickel
Body Plating Specification	100 µin minimum	100 µin minimum
Coupling Nut Material and Plating	Brass, Nickel	
Coupling Nut Plating Specification	100 µin minimum	
Hex Size	5/16 inch	
Torque	3 in-lbs 0.34 Nm	

#### Environmental Specifications

Operating Range Temperature -55 to +165 deg C

**Compliance Certifications** (see [product page](#) for current document)

#### Plotted and Other Data

Notes:

## SMA Male to BNC Female Bulkhead Cable Using RG316 Coax with HeatShrink



### PE3177/HS

#### Typical Performance Data

#### How to Order

Part Number Configuration:

**PE3177/HS - xx uu**

Unit of Measure:  
cm = Centimeters  
<blank> = Inches

Length

Base Number

Example: PE3177/HS-12 = 12 inches long cable  
PE3177/HS-100cm = 100 cm long cable

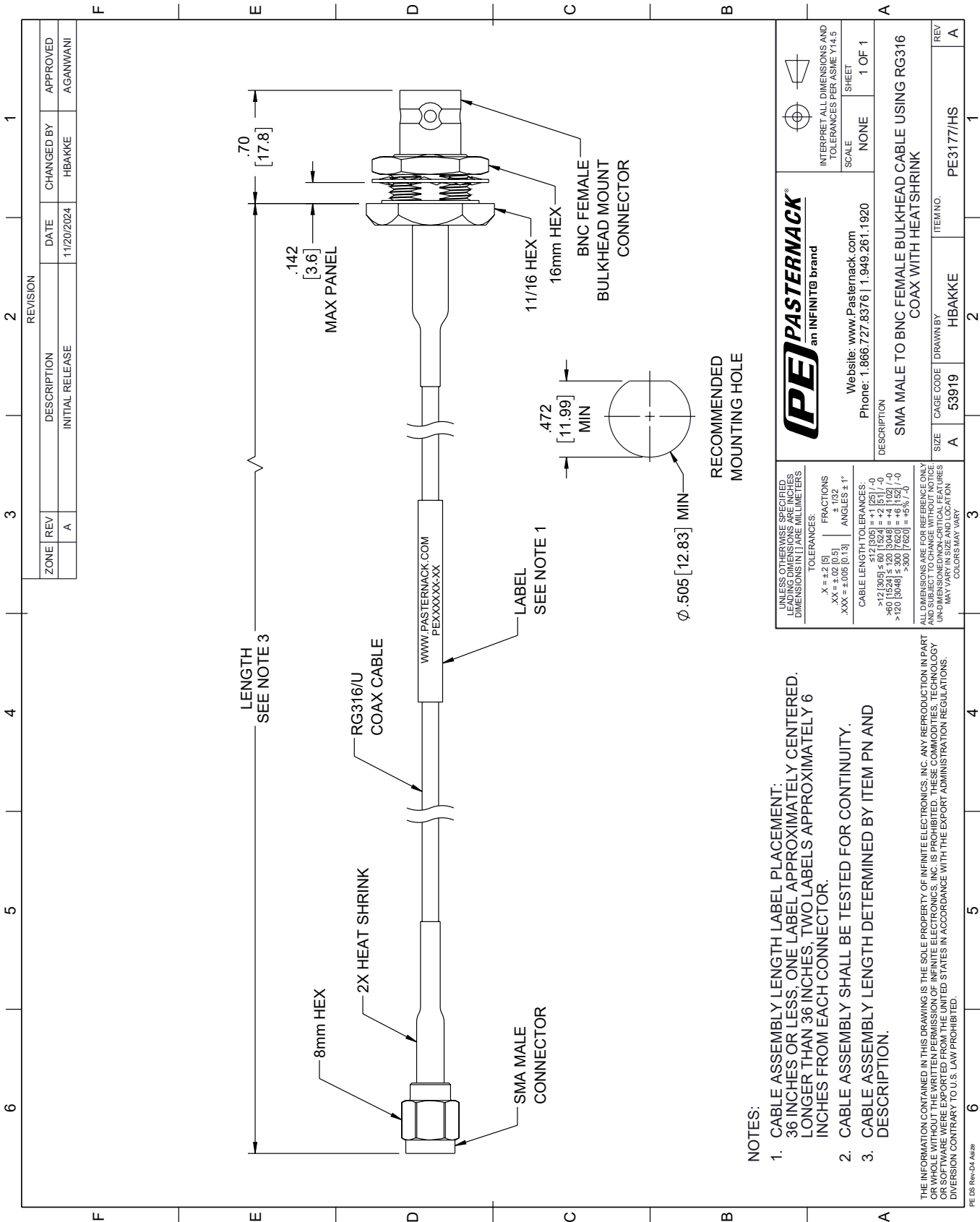
SMA Male to BNC Female Bulkhead Cable Using RG316 Coax with HeatShrink from Pasternack Enterprises has same day shipment for domestic and International orders. Our RF, microwave and millimeter wave products maintain a 99.4% availability and are part of the broadest selection in the industry.

Click the following link (or enter part number in "SEARCH" on website) to obtain additional part information including price, inventory and certifications: [SMA Male to BNC Female Bulkhead Cable Using RG316 Coax with HeatShrink PE3177/HS](#)

URL: <https://www.pasternack.com/sma-male-to-bnc-female-bulkhead-cable-using-rg316-with-heatshrink-pe3177-hs-p.aspx>

The information contained within this document is accurate to the best of our knowledge and representative of the part described herein. It may be necessary to make modifications to the part and/or the documentation of the part in order to implement improvements. Pasternack Enterprises reserves the right to make such changes as required. Unless otherwise stated, all specifications are nominal. Pasternack Enterprises does not make any representation or warranty regarding the suitability of the part described herein for any particular purpose, and Pasternack Enterprises does not assume liability arising out of the use of any part or document.

PE3177/HS CAD Drawing
SMA Male to BNC Female Bulkhead Cable Using RG316 Coax with HeatShrink



- NOTES:
- 1. CABLE ASSEMBLY LENGTH LABEL PLACEMENT: 36 INCHES OR LESS, ONE LABEL APPROXIMATELY CENTERED. LONGER THAN 36 INCHES, TWO LABELS APPROXIMATELY 6 INCHES FROM EACH CONNECTOR.
- 2. CABLE ASSEMBLY SHALL BE TESTED FOR CONTINUITY.
- 3. CABLE ASSEMBLY LENGTH DETERMINED BY ITEM PN AND DESCRIPTION.

UNLESS OTHERWISE SPECIFIED, LEADING DIMENSIONS ARE IN INCHES, UNLESS INDICATED OTHERWISE. DIMENSIONS IN [ ] ARE IN MILLIMETERS.		<b>PE PASTERNAK</b> an INFINITE® brand		INTERPRET ALL DIMENSIONS AND TOLERANCES PER ASME Y14.5	
TOLERANCES:		Website: <a href="http://www.Pasternack.com">www.Pasternack.com</a>		SCALE	
X = ±.2 [5]		Phone: 1.866.727.8376   1.949.261.1920		NONE	
.XX = ±.02 [0.5]				SHEET	
.XXX = ±.005 [0.13]				1 OF 1	
ANGLES ± 1°					
CABLE LENGTH TOLERANCES:		DESCRIPTION			
>12 [305] ≤ 60 [1524] = ±.12 [3.05] / -0		SMA MALE TO BNC FEMALE BULKHEAD CABLE USING RG316			
>60 [1524] ≤ 120 [3048] = ±.12 [3.05] / -0		COAX WITH HEATSHRINK			
>120 [3048] ≤ 300 [7620] = ±.12 [3.05] / -0					
ALL DIMENSIONS ARE FOR REFERENCE ONLY. UNLESS OTHERWISE SPECIFIED, DIMENSIONS MAY VARY IN SIZE AND LOCATION. COLORS MAY VARY.		SIZE		CAGE CODE	
		A		53919	
		DRAWN BY		HBAKKE	
		ITEM NO.		PE3177/HS	
		REV		A	