

SMA Female Bulkhead to SMB Plug Cable Using RG316 Coax



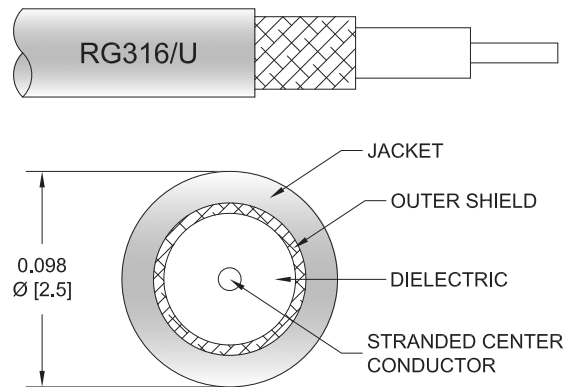
PE33027

Configuration

- Connector 1: SMA Female Bulkhead
- Connector 2: SMB Plug
- Cable Type: RG316
- Coax Flex Type: Flexible

Features

- 69% Phase Velocity
- FEP Jacket



Applications

- General Purpose
- Laboratory Use

Description

Pasternack's PE33027 SMA female bulkhead to SMB plug cable using RG316 coax is part of our full line of RF components available for same-day shipping. Pasternack's flexible RF cable assemblies are ideal for applications where tight bends and flexure are required. This Pasternack SMA to SMB cable assembly has a female to plug gender configuration with 50 ohm flexible RG316 coax. Our RF cable assembly with SMA bulkhead interface allows designers to create external connections on their product enclosures, and can be used in a variety of other rack mount and panel mount applications.

Custom versions of most RF cable assemblies can be built and shipped same day. Custom cable assembly lengths can be obtained by specifying the desired length on the web site at time of order or by contacting a sales representative. Other available RF cable assembly value added services include connector orientation or clocking, heat shrink booting and custom labeling. RF testing can also be performed to document the electrical performance of your cable assembly.

Electrical Specifications

Description	Minimum	Typical	Maximum	Units
Velocity of Propagation		69		%
Jacket Spark			2,000	Vrms

Mechanical Specifications

Cable Assembly

Weight 0.03 lbs [13.61 g]

Cable

Cable Type RG316
Impedance 50 Ohms
Inner Conductor Type Stranded
Inner Conductor Material and Plating Copper Clad Steel, Silver
Dielectric Type PTFE

SMA Female Bulkhead to SMB Plug Cable Using RG316 Coax



PE33027

Number of Shields	1
Shield Layer 1	Silver Plated Copper Braid
Jacket Material	FEP, Tan
Jacket Diameter	0.102 in [2.59 mm]

Connectors

Description	Connector 1	Connector 2
Type	SMA Female Bulkhead	SMB Plug
Specification	MIL-STD-348	MIL-STD-348A
Impedance	50 Ohms	50 Ohms
Configuration	Straight	Straight
Contact Material and Plating	Beryllium Copper, Gold	Beryllium Copper, Gold
Contact Plating Specification	MIL-G-45204	30 µin minimum
Dielectric Type		PTFE
Outer Conductor Material and Plating	Brass, Nickel	
Body Material and Plating	Brass, Nickel	Brass, Nickel
Body Plating Specification		100 µin minimum
Coupling Nut Material and Plating		Brass, Nickel
Coupling Nut Plating Specification		100 µin minimum

Environmental Specifications

Compliance Certifications (see [product page](#) for current document)

Plotted and Other Data

Notes:
Values at 25°C, sea level.

SMA Female Bulkhead to SMB Plug Cable Using RG316 Coax



PE33027

Typical Performance Data

How to Order

Part Number Configuration:

PE33027

- xx

uu

Unit of Measure:
cm = Centimeters
<blank> = Inches

Length

Base Number

Example: PE33027-12 = 12 inches long cable
PE33027-100cm = 100 cm long cable

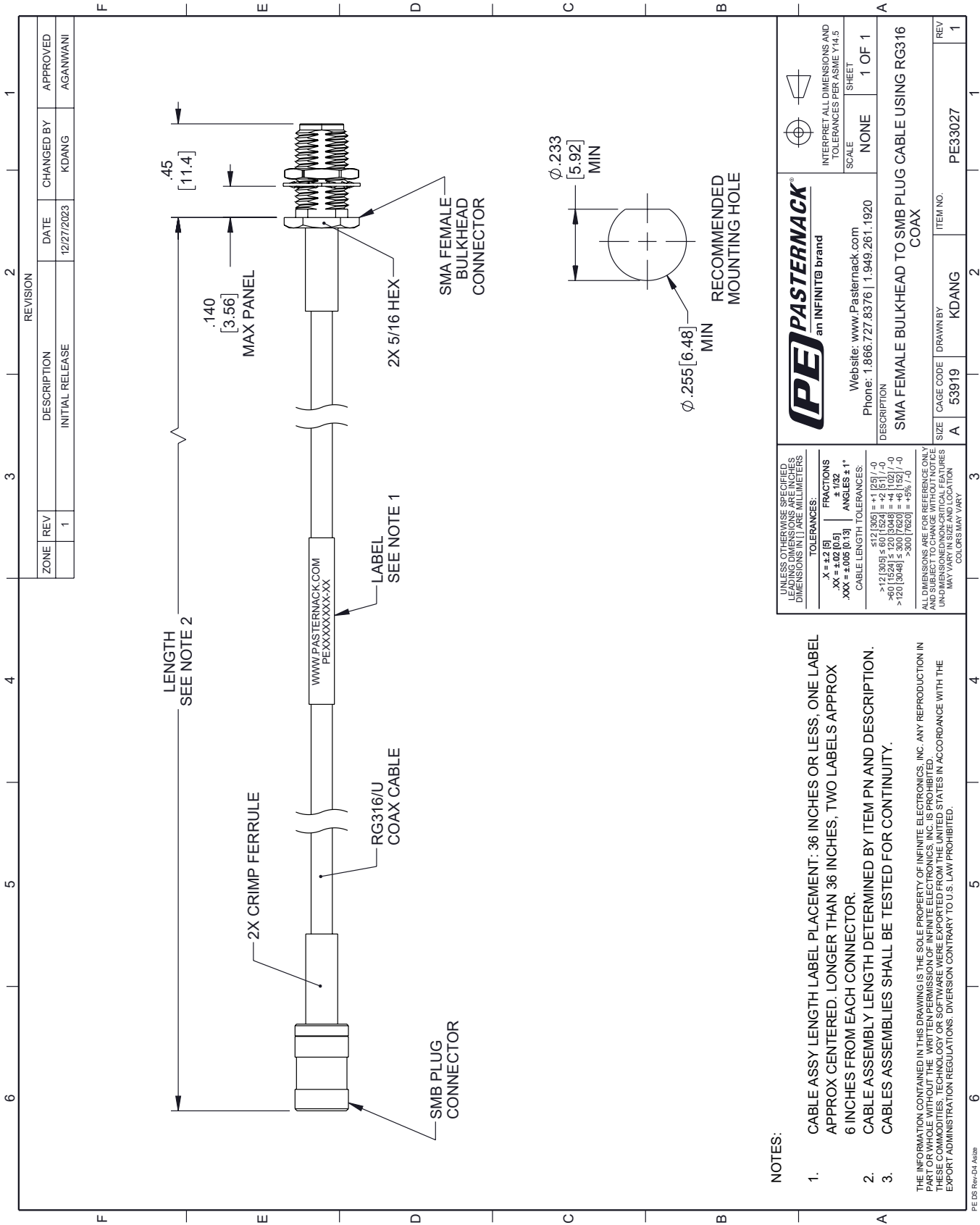
SMA Female Bulkhead to SMB Plug Cable Using RG316 Coax from Pasternack Enterprises has same day shipment for domestic and International orders. Our RF, microwave and millimeter wave products maintain a 99.4% availability and are part of the broadest selection in the industry.


Click the following link (or enter part number in "SEARCH" on website) to obtain additional part information including price, inventory and certifications: [SMA Female Bulkhead to SMB Plug Cable Using RG316 Coax PE33027](#)

URL: <https://www.pasternack.com/sma-female-bulkhead-to-smb-plug-cable-using-rg316-pe33027-p.aspx>

The information contained within this document is accurate to the best of our knowledge and representative of the part described herein. It may be necessary to make modifications to the part and/or the documentation of the part in order to implement improvements. Pasternack Enterprises reserves the right to make such changes as required. Unless otherwise stated, all specifications are nominal. Pasternack Enterprises does not make any representation or warranty regarding the suitability of the part described herein for any particular purpose, and Pasternack Enterprises does not assume liability arising out of the use of any part or document.

PE33027 CAD Drawing
SMA Female Bulkhead to SMB Plug Cable Using RG316 Coax



UNLESS OTHERWISE SPECIFIED, LEADING DIMENSIONS ARE IN INCHES, TRAILING DIMENSIONS IN [] ARE MILLIMETERS		PE PASTERNAK an INFINITE® brand		 		INTERPRET ALL DIMENSIONS AND TOLERANCES PER ASME Y14.5	
TOLERANCES:		Website: www.Pasternack.com		SCALE		SHEET	
.X = ±.2 [5] .XX = ±.02 [0.5] .XXX = ±.005 [0.13]		Phone: 1.866.727.8376 1.949.261.1920		NONE		1 OF 1	
CABLE LENGTH TOLERANCES:		DESCRIPTION					
<12 [305] = ±.1 [2.5] / -0 >12 [305] ≤ 60 [1524] = ±.2 [5.1] / -0 >60 [1524] ≤ 120 [3048] = ±.4 [10.2] / -0 >120 [3048] ≤ 300 [7620] = ±.5% [1.3]		SMA FEMALE BULKHEAD TO SMB PLUG CABLE USING RG316 COAX					
ALL DIMENSIONS ARE FOR REFERENCE ONLY. UNLESS OTHERWISE SPECIFIED, DIMENSIONS MAY VARY IN SIZE AND LOCATION. COLORS MAY VARY.		SIZE		CAGE CODE		REV	
		A		53919		1	
		DRAWN BY		KDANG		PE33027	
		ITEM NO.					

- NOTES:
- CABLE ASSY LENGTH LABEL PLACEMENT: 36 INCHES OR LESS, ONE LABEL APPROX CENTERED. LONGER THAN 36 INCHES, TWO LABELS APPROX 6 INCHES FROM EACH CONNECTOR.
 - CABLE ASSEMBLY LENGTH DETERMINED BY ITEM PN AND DESCRIPTION.
 - CABLES ASSEMBLIES SHALL BE TESTED FOR CONTINUITY.
- THE INFORMATION CONTAINED IN THIS DRAWING IS THE SOLE PROPERTY OF INFINITE ELECTRONICS, INC. ANY REPRODUCTION IN PART OR WHOLE WITHOUT THE WRITTEN PERMISSION OF INFINITE ELECTRONICS, INC. IS PROHIBITED. THESE COMMODITIES, TECHNOLOGY OR SOFTWARE WERE EXPORTED FROM THE UNITED STATES IN ACCORDANCE WITH THE EXPORT ADMINISTRATION REGULATIONS. DIVERSION CONTRARY TO U.S. LAW PROHIBITED.