

## MCX Plug Right Angle to MCX Plug Right Angle Cable Using RG316 Coax with HeatShrink



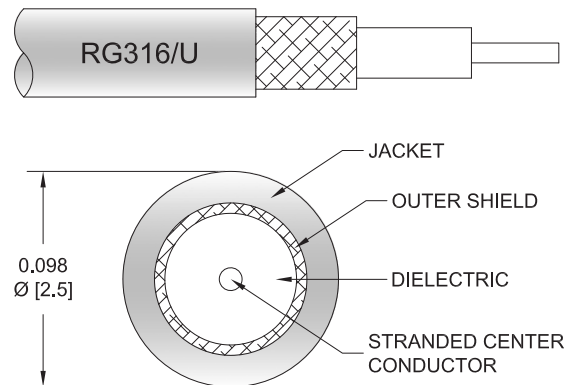
### PE3306/HS

#### Configuration

- Connector 1: MCX Plug Right Angle
- Connector 2: MCX Plug Right Angle
- Cable Type: RG316
- Coax Flex Type: Flexible

#### Features

- Max Frequency 3 GHz
- 69% Phase Velocity
- FEP Jacket



#### Applications

- General Purpose
- Laboratory Use

#### Description

Pasternack's PE3306/HS MCX plug right angle to MCX plug right angle cable using RG316 coax is part of our full line of RF components available for same-day shipping. Pasternack's flexible RF cable assemblies are ideal for applications where tight bends and flexure are required. This Pasternack MCX to MCX cable assembly has a plug to plug gender configuration with 50 ohm flexible RG316 coax. The PE3306/HS MCX plug to MCX plug cable assembly operates to 3 GHz. The right angle MCX interfaces on the RG316 cable allow for easier connections in tight spaces.

Custom versions of most RF cable assemblies can be built and shipped same day. Custom cable assembly lengths can be obtained by specifying the desired length on the web site at time of order or by contacting a sales representative. Other available RF cable assembly value added services include connector orientation or clocking, heat shrink booting and custom labeling. RF testing can also be performed to document the electrical performance of your cable assembly.

#### Electrical Specifications

Description	Minimum	Typical	Maximum	Units
Frequency Range	DC		3	GHz
VSWR			1.4:1	
Velocity of Propagation		69		%
Operating Voltage (AC)			250	Vrms
Jacket Spark			2,000	Vrms

#### Specifications by Frequency

## MCX Plug Right Angle to MCX Plug Right Angle Cable Using RG316 Coax with HeatShrink



### PE3306/HS

Part Number	Length	Description	F1	F2	F3	F4	F5	Units	Weight (lbs)
			Frequency		100	250	500	1000	
PE3306/HS	Custom Lengths Available	Insertion Loss (Typ.)	0.11	0.16	0.24	0.38	0.58	dB/ft	
			0.37	0.53	0.79	1.25	1.91	dB/m	
PE3306/HS-12	12 inch	Insertion Loss (Typ.)	0.51	0.56	0.64	0.78	0.98	dB	0.028
PE3306/HS-24	24 inch	Insertion Loss (Typ.)	0.62	0.72	0.88	1.16	1.56	dB	0.039
PE3306/HS-36	36 inch	Insertion Loss (Typ.)	0.73	0.88	1.12	1.54	2.14	dB	0.049
PE3306/HS-48	48 inch	Insertion Loss (Typ.)	0.84	1.04	1.36	1.92	2.72	dB	0.059
PE3306/HS-72	72 inch	Insertion Loss (Typ.)	1.06	1.36	1.83	2.68	3.88	dB	0.079

The insertion loss data for the base model does not include loss due to the connectors. Each length includes insertion loss due to the connectors.

Loss due to Connector 1:	0.2 dB
Loss due to Connector 2:	0.2 dB
Base Weight:	0.028 pounds
Additional Weight per Inch:	0.00084 pounds

### Mechanical Specifications

#### Cable Assembly

Width/Diameter 0.5 in [12.7 mm]

#### Cable

Cable Type	RG316
Impedance	50 Ohms
Inner Conductor Type	Stranded
Inner Conductor Material and Plating	Copper Clad Steel, Silver
Dielectric Type	PTFE
Number of Shields	1
Shield Layer 1	Silver Plated Copper Braid
Jacket Material	FEP, Tan
Jacket Diameter	0.102 in [2.59 mm]

### Connectors

Description	Connector 1	Connector 2
Type	MCX Plug Right Angle	MCX Plug Right Angle
Specification	CECC 22220	CECC 22220
Impedance	50 Ohms	50 Ohms
Configuration	Right Angle	Right Angle
Contact Material and Plating	Brass, Gold	Brass, Gold
Contact Plating Specification	30 µin minimum	30 µin minimum
Dielectric Type	PTFE	PTFE
Body Material and Plating	Brass, Nickel	Brass, Nickel
Body Plating Specification	100 µin minimum	100 µin minimum

## MCX Plug Right Angle to MCX Plug Right Angle Cable Using RG316 Coax with HeatShrink



### PE3306/HS

#### Environmental Specifications

Operating Range Temperature -40 to +60 deg C

**Compliance Certifications** (see [product page](#) for current document)

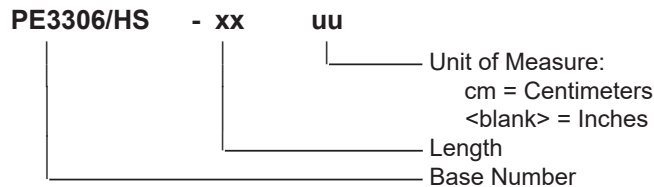
#### Plotted and Other Data

Notes:

#### Typical Performance Data

#### How to Order

Part Number Configuration:



Example: PE3306/HS-12 = 12 inches long cable  
PE3306/HS-100cm = 100 cm long cable

MCX Plug Right Angle to MCX Plug Right Angle Cable Using RG316 Coax with HeatShrink from Pasternack Enterprises has same day shipment for domestic and International orders. Our RF, microwave and millimeter wave products maintain a 99.4% availability and are part of the broadest selection in the industry.

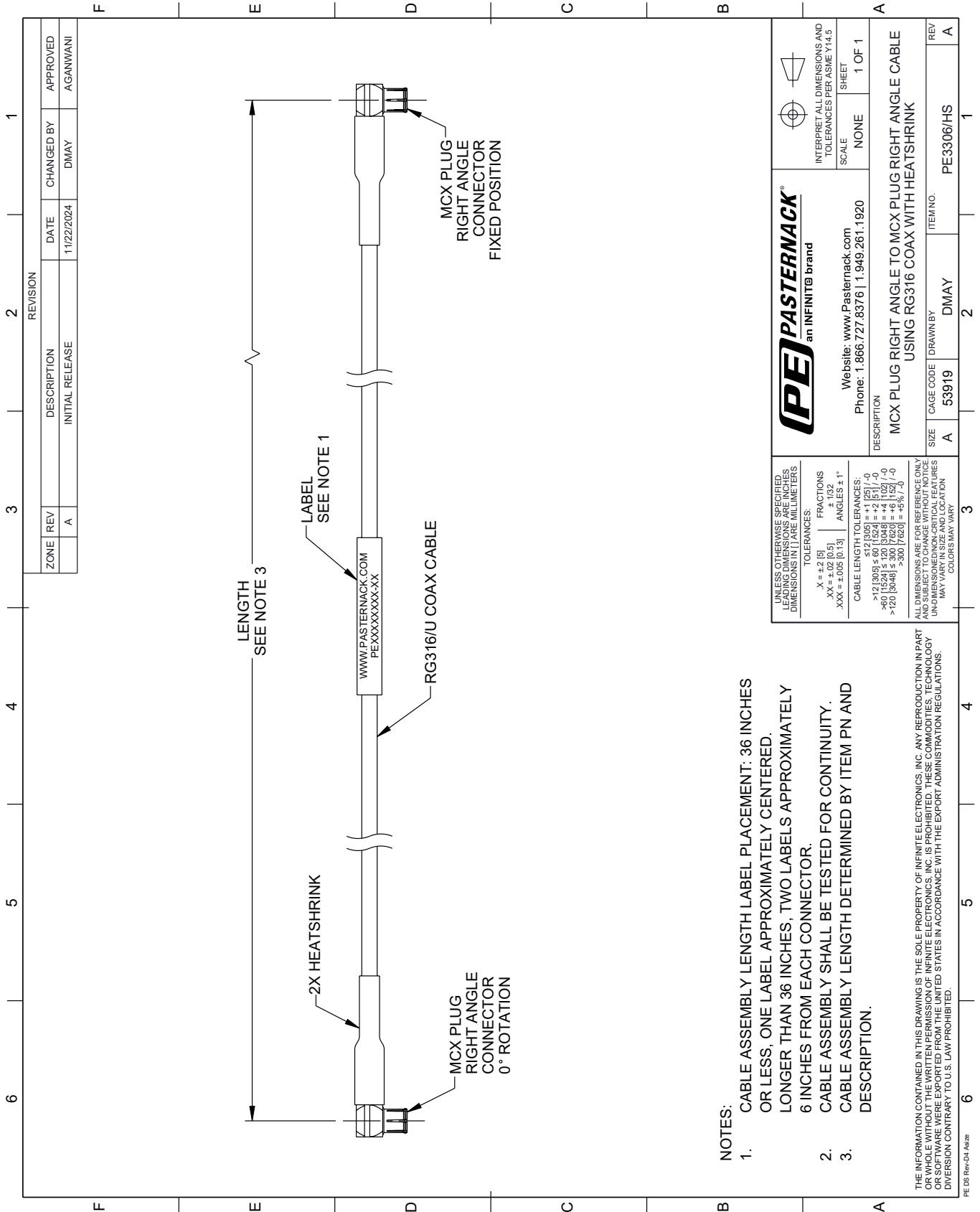
Click the following link (or enter part number in "SEARCH" on website) to obtain additional part information including price, inventory and certifications: [MCX Plug Right Angle to MCX Plug Right Angle Cable Using RG316 Coax with HeatShrink PE3306/HS](#)

URL: <https://www.pasternack.com/mcx-plug-right-angle-to-mcx-plug-cable-using-rg316-with-heatshrink-pe3306-hs-p.aspx>

The information contained within this document is accurate to the best of our knowledge and representative of the part described herein. It may be necessary to make modifications to the part and/or the documentation of the part in order to implement improvements. Pasternack Enterprises reserves the right to make such changes as required. Unless otherwise stated, all specifications are nominal. Pasternack Enterprises does not make any representation or warranty regarding the suitability of the part described herein for any particular purpose, and Pasternack Enterprises does not assume liability arising out of the use of any part or document.

# PE3306/HS CAD Drawing

MCX Plug Right Angle to MCX Plug Right Angle Cable Using RG316 Coax with HeatShrink



**NOTES:**

1. CABLE ASSEMBLY LENGTH LABEL PLACEMENT: 36 INCHES OR LESS, ONE LABEL APPROXIMATELY CENTERED. LONGER THAN 36 INCHES, TWO LABELS APPROXIMATELY 6 INCHES FROM EACH CONNECTOR.
2. CABLE ASSEMBLY SHALL BE TESTED FOR CONTINUITY.
3. CABLE ASSEMBLY LENGTH DETERMINED BY ITEM PN AND DESCRIPTION.

THE INFORMATION CONTAINED IN THIS DRAWING IS THE SOLE PROPERTY OF INFINITE ELECTRONICS, INC. ANY REPRODUCTION IN PART OR WHOLE WITHOUT THE WRITTEN PERMISSION OF INFINITE ELECTRONICS, INC. IS PROHIBITED. THESE COMMODITIES, TECHNOLOGY OR SERVICES ARE EXPORTED FROM THE UNITED STATES IN ACCORDANCE WITH THE EXPORT ADMINISTRATION REGULATIONS. DIVERSION CONTRARY TO U.S. LAW PROHIBITED.

		INTERPRET ALL DIMENSIONS AND TOLERANCES PER ASME Y14.5 SCALE: NONE SHEET: 1 OF 1	
Website: <a href="http://www.Pasternack.com">www.Pasternack.com</a> Phone: 1.866.727.8376   1.949.261.1920		DESCRIPTION: MCX PLUG RIGHT ANGLE TO MCX PLUG RIGHT ANGLE CABLE USING RG316 COAX WITH HEATSHRINK	
SIZE: A	CAGE CODE: 53919	DRAWN BY: DMAY	ITEM NO.: PE3306/HS
UNLESS OTHERWISE SPECIFIED, LEADING DIMENSIONS ARE IN INCHES. DIMENSIONS IN [ ] ARE MILLIMETERS.		ALL DIMENSIONS ARE FOR REFERENCE ONLY. UNDIMENSIONED/NON-CRITICAL FEATURES MAY VARY IN SIZE AND LOCATION. COLORS MAY VARY.	
TOLERANCES: .X = ±.2 [5] .XX = ±.02 [0.5] .XXX = ±.005 [0.13]		FRACTIONS: ± 1/32 ANGLES: ± 1°	
CABLE LENGTH TOLERANCES: >12 [305] ≤ 60 [1524] = ±.1 [25] / -0 >60 [1524] ≤ 120 [3048] = ±.4 [102] / -0 >120 [3048] ≤ 300 [7620] = ±.6 [15] / -0		UNLESS OTHERWISE SPECIFIED, LEADING DIMENSIONS ARE IN INCHES. DIMENSIONS IN [ ] ARE MILLIMETERS.	

REVISION			
ZONE	REV	DESCRIPTION	DATE
	A	INITIAL RELEASE	11/22/2024
		CHANGED BY	AGANWANI
		APPROVED	