



## SMB Plug to BNC Female Cable Using RG316 Coax

### RF Cable Assemblies Technical Data Sheet

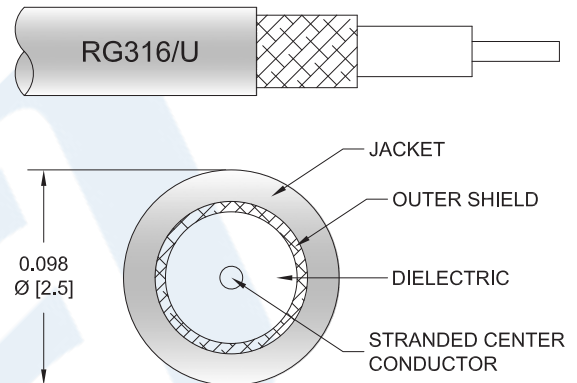
**PE33495**

#### Configuration

- Connector 1: SMB Plug
- Connector 2: BNC Female
- Cable Type: RG316

#### Features

- Max Frequency 1 GHz
- FEP Jacket



#### Applications

- General Purpose
- Laboratory Use

#### Description

Pasternack's PE33495 SMB plug to BNC female cable using RG316 coax is part of our full line of RF components available for same-day shipping. Pasternack's flexible RF cable assemblies are ideal for applications where tight bends and flexure are required. This Pasternack SMB to BNC cable assembly has a plug to female gender configuration with 50 ohm flexible RG316 coax. The PE33495 SMB plug to BNC female cable assembly operates to 1 GHz.

Custom versions of most RF cable assemblies can be built and shipped same day. Custom cable assembly lengths can be obtained by specifying the desired length on the web site at time of order or by contacting a sales representative. Other available RF cable assembly value added services include connector orientation or clocking, heat shrink booting and custom labeling. RF testing can also be performed to document the electrical performance of your cable assembly.

Click the following link (or enter part number in "SEARCH" on website) to obtain additional part information including price, inventory and certifications: [SMB Plug to BNC Female Cable Using RG316 Coax PE33495](#)



## SMB Plug to BNC Female Cable Using RG316 Coax

### RF Cable Assemblies Technical Data Sheet

**PE33495**

#### Electrical Specifications

Description	Minimum	Typical	Maximum	Units
Frequency Range	DC		1,000	MHz
VSWR			1.5:1	
Capacitance		32 [104.99]		pF/ft [pF/m]

#### Specifications by Frequency

Description	F1	F2	F3	F4	F5	Units
Frequency	50	100	250	500	1,000	MHz
Insertion Loss (Typ.)	0.075	0.11	0.16	0.238	0.38	dB/ft
	0.25	0.36	0.52	0.78	1.25	dB/m

#### Electrical Specification Notes:

Insertion Loss does not include the loss of the connectors. Insertion Loss is estimated as 0.1 dB per connector.

#### Mechanical Specifications

##### Cable Assembly

Weight 0.044 lbs [19.96 g]

##### Cable

Cable Type RG316  
 Impedance 50 Ohms  
 Inner Conductor Type Stranded  
 Inner Conductor Material and Plating Copper Clad Steel, Silver  
 Dielectric Type PTFE  
 Number of Shields 1  
 Shield Layer 1 Silver Plated Copper Braid  
 Jacket Material FEP, Tan  
 Jacket Diameter 0.098 in [2.49 mm]

Click the following link (or enter part number in "SEARCH" on website) to obtain additional part information including price, inventory and certifications: [SMB Plug to BNC Female Cable Using RG316 Coax PE33495](#)



## SMB Plug to BNC Female Cable Using RG316 Coax

### RF Cable Assemblies Technical Data Sheet

**PE33495**

#### Connectors

Description	Connector 1	Connector 2
Type	SMB Plug	BNC Female
Specification	MIL-STD-348A	MIL-STD-348A
Impedance	50 Ohms	50 Ohms
Contact Material and Plating	Beryllium Copper, Gold	Brass, Gold
Contact Plating Specification	30µ in. minimum	30µ in. minimum
Dielectric Type	Teflon	Teflon
Outer Conductor Material and Plating	Brass	Brass, Nickel
Outer Conductor Plating Specification		100µ in. minimum
Body Material and Plating	Brass, Nickel	Brass, Nickel
Body Plating Specification	100µ in. minimum	100µ in. minimum
Coupling Nut Material and Plating	Brass, Nickel	
Coupling Nut Plating Specification	100µ in. minimum	

#### Environmental Specifications

##### Temperature

Operating Range -55 to +165 deg C

#### Compliance Certifications (see [product page](#) for current document)

#### Plotted and Other Data

##### Notes:

- Values at 25°C, sea level.

Click the following link (or enter part number in "SEARCH" on website) to obtain additional part information including price, inventory and certifications: [SMB Plug to BNC Female Cable Using RG316 Coax PE33495](#)



## SMB Plug to BNC Female Cable Using RG316 Coax

### RF Cable Assemblies Technical Data Sheet

**PE33495**

#### How to Order

Part Number Configuration:

**PE33495**

- **xx**

**uu**

Unit of Measure:  
cm = Centimeters  
<blank> = Inches  
Length  
Base Number

Example: PE33495-12 = 12 inches long cable  
PE33495-100cm = 100 cm long cable

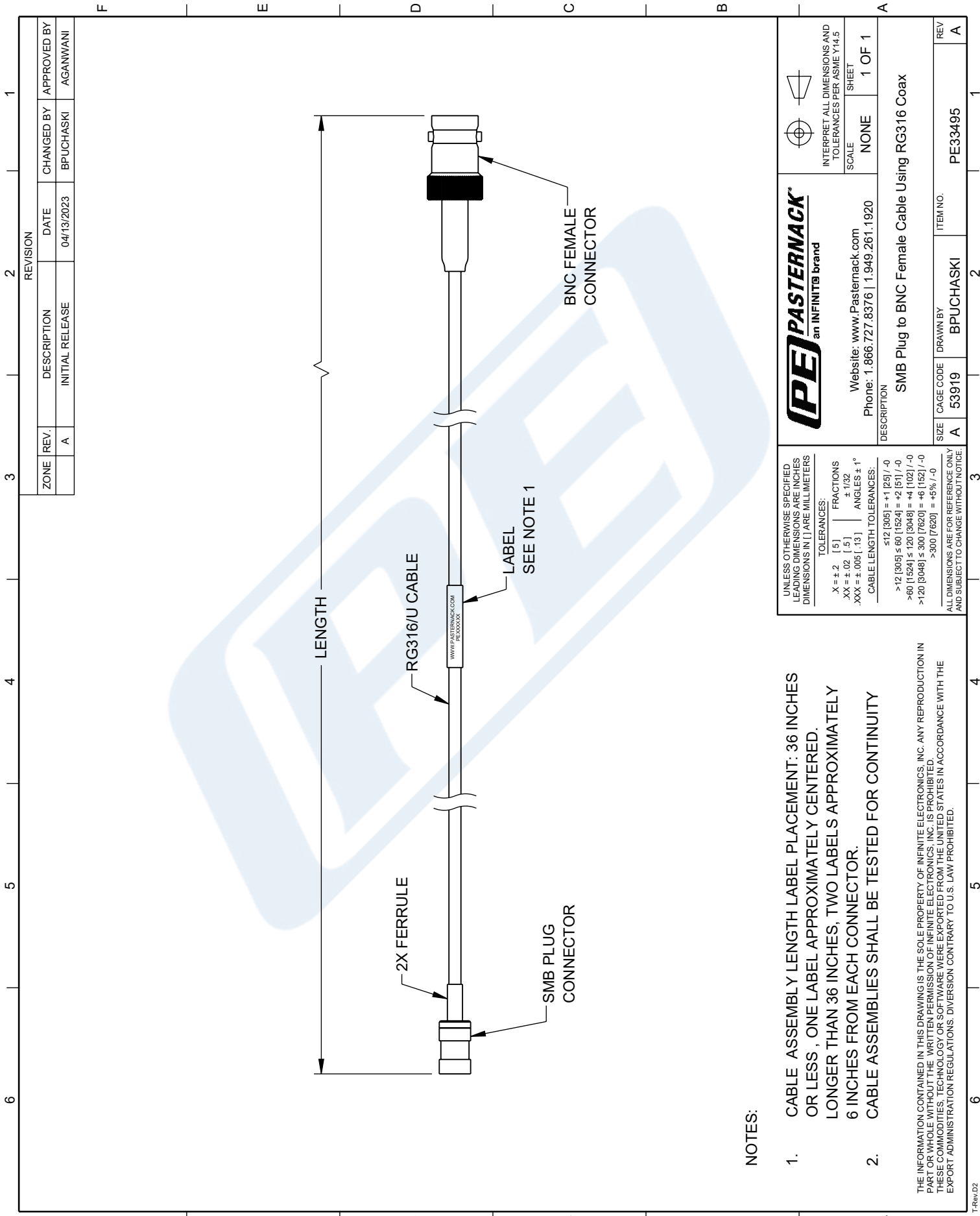
SMB Plug to BNC Female Cable Using RG316 Coax from Pasternack Enterprises has same day shipment for domestic and International orders. Our RF, microwave and millimeter wave products maintain a 99.4% availability and are part of the broadest selection in the industry.

Click the following link (or enter part number in "SEARCH" on website) to obtain additional part information including price, inventory and certifications: [SMB Plug to BNC Female Cable Using RG316 Coax PE33495](#)

URL: <https://www.pasternack.com/smb-plug-to-bnc-female-cable-using-rg316-pe33495-p.aspx>

The information contained in this document is accurate to the best of our knowledge and representative of the part described herein. It may be necessary to make modifications to the part and/or the documentation of the part, in order to implement improvements. Pasternack reserves the right to make such changes as required. Unless otherwise stated, all specifications are nominal. Pasternack does not make any representation or warranty regarding the suitability of the part described herein for any particular purpose, and Pasternack does not assume any liability arising out of the use of any part or documentation.

PE33495 CAD Drawing  
SMB Plug to BNC Female Cable Using RG316 Coax



NOTES:

1. CABLE ASSEMBLY LENGTH LABEL PLACEMENT: 36 INCHES OR LESS , ONE LABEL APPROXIMATELY CENTERED. LONGER THAN 36 INCHES, TWO LABELS APPROXIMATELY 6 INCHES FROM EACH CONNECTOR.
2. CABLE ASSEMBLIES SHALL BE TESTED FOR CONTINUITY

THE INFORMATION CONTAINED IN THIS DRAWING IS THE SOLE PROPERTY OF INFINITE ELECTRONICS, INC. ANY REPRODUCTION IN PART OR WHOLE WITHOUT THE WRITTEN PERMISSION OF INFINITE ELECTRONICS, INC. IS PROHIBITED. THESE COMMODITIES, TECHNOLOGY OR SOFTWARE WERE EXPORTED FROM THE UNITED STATES IN ACCORDANCE WITH THE EXPORT ADMINISTRATION REGULATIONS. DIVERSION CONTRARY TO U.S. LAW PROHIBITED.

UNLESS OTHERWISE SPECIFIED LEADING DIMENSIONS ARE INCHES DIMENSIONS IN [ ] ARE MILLIMETERS	
TOLERANCES:	FRACTIONS
X = ± .2 [ .5 ]	± 1/32
.XX = ± .02 [ .5 ]	± 1/16
.XXX = ± .005 [ .13 ]	ANGLES ± 1°
CABLE LENGTH TOLERANCES:	
≤12 [305] = ±1 [25] / -0	
>12 [305] ≤ 60 [1524] = ±2 [51] / -0	
>60 [1524] ≤ 120 [3048] = ±4 [102] / -0	
>120 [3048] ≤ 300 [7620] = ±6 [152] / -0	
>300 [7620] = ±5% / -0	
ALL DIMENSIONS ARE FOR REFERENCE ONLY AND SUBJECT TO CHANGE WITHOUT NOTICE	

<b>PE PASTERNAK</b> an INFINITE brand	
Website: <a href="http://www.Pasternack.com">www.Pasternack.com</a> Phone: 1.866.727.8376   1.949.261.1920	
INTERPRET ALL DIMENSIONS AND TOLERANCES PER ASME Y14.5	
SCALE	SHEET
NONE	1 OF 1
DESCRIPTION	
SMB Plug to BNC Female Cable Using RG316 Coax	
SIZE	REV
A	A
CAGE CODE	ITEM NO.
53919	PE33495
DRAWN BY	
BPUCHASKI	