

## SMC Jack Bulkhead to SMC Plug Cable Using RG316 Coax with HeatShrink



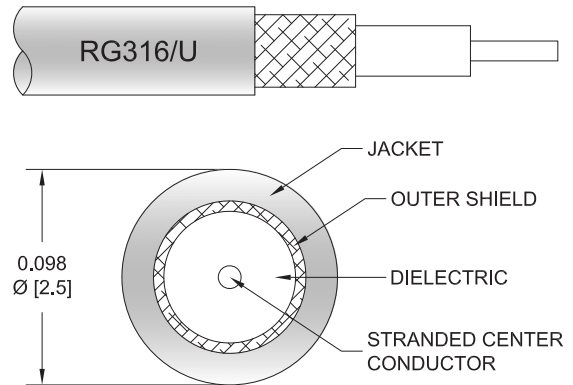
### PE33690/HS

#### Configuration

- Connector 1: SMC Jack Bulkhead
- Connector 2: SMC Plug
- Cable Type: RG316
- Coax Flex Type: Flexible

#### Features

- Max Frequency 3 GHz
- 69% Phase Velocity
- FEP Jacket



#### Applications

- General Purpose
- Laboratory Use

#### Description

Pasternack's PE33690/HS SMC jack bulkhead to SMC plug cable using RG316 coax is part of our full line of RF components available for same-day shipping. Pasternack's flexible RF cable assemblies are ideal for applications where tight bends and flexure are required. This Pasternack SMC to SMC cable assembly has a jack to plug gender configuration with 50 ohm flexible RG316 coax. The PE33690/HS SMC jack to SMC plug cable assembly operates to 3 GHz. Our RF cable assembly with SMC bulkhead interface allows designers to create external connections on their product enclosures, and can be used in a variety of other rack mount and panel mount applications.

Custom versions of most RF cable assemblies can be built and shipped same day. Custom cable assembly lengths can be obtained by specifying the desired length on the web site at time of order or by contacting a sales representative. Other available RF cable assembly value added services include connector orientation or clocking, heat shrink booting and custom labeling. RF testing can also be performed to document the electrical performance of your cable assembly.

#### Electrical Specifications

Description	Minimum	Typical	Maximum	Units
Frequency Range	DC		3	GHz
VSWR			1.4:1	
Velocity of Propagation		69		%
Operating Voltage (AC)			335	Vrms
Jacket Spark			2,000	Vrms

#### Specifications by Frequency

## SMC Jack Bulkhead to SMC Plug Cable Using RG316 Coax with HeatShrink



### PE33690/HS

Part Number	Length	Description	F1	F2	F3	F4	F5	Units	Weight (lbs)
		Frequency	100	250	500	1000	3000	MHz	
PE33690/HS	Custom Lengths Available	Insertion Loss (Typ.)	0.11	0.16	0.238	0.38	0.58	dB/ft	
			0.37	0.53	0.79	1.25	1.91	dB/m	
PE33690/HS-12	12 inch	Insertion Loss (Typ.)	0.31	0.36	0.44	0.58	0.78	dB	0.03
PE33690/HS-24	24 inch	Insertion Loss (Typ.)	0.42	0.52	0.68	0.96	1.36	dB	0.041
PE33690/HS-36	36 inch	Insertion Loss (Typ.)	0.53	0.68	0.92	1.34	1.94	dB	0.051
PE33690/HS-48	48 inch	Insertion Loss (Typ.)	0.64	0.84	1.16	1.72	2.52	dB	0.061
PE33690/HS-72	72 inch	Insertion Loss (Typ.)	0.86	1.16	1.63	2.48	3.68	dB	0.081

The insertion loss data for the base model does not include loss due to the connectors. Each length includes insertion loss due to the connectors.

Loss due to Connector 1:	0.1 dB
Loss due to Connector 2:	0.1 dB
Base Weight:	0.03 pounds
Additional Weight per Inch:	0.00084 pounds

### Mechanical Specifications

#### Cable Assembly

Width/Diameter	0.5 in [12.7 mm]
Weight	0.02 lbs [9.07 g]

#### Cable

Cable Type	RG316
Impedance	50 Ohms
Inner Conductor Type	Stranded
Inner Conductor Material and Plating	Copper Clad Steel, Silver
Dielectric Type	PTFE
Number of Shields	1
Shield Layer 1	Silver Plated Copper Braid
Jacket Material	FEP, Tan
Jacket Diameter	0.102 in [2.59 mm]

SMC Jack Bulkhead to SMC Plug Cable  
Using RG316 Coax with HeatShrink



PE33690/HS

Connectors

Description	Connector 1	Connector 2
Type	SMC Jack Bulkhead	SMC Plug
Specification	MIL-STD-348A	MIL-STD-348A
Impedance	50 Ohms	50 Ohms
Configuration	Straight	Straight
Contact Material and Plating	Brass, Gold	Beryllium Copper, Gold
Contact Plating Specification	30 µin minimum	30 µin minimum
Dielectric Type	PTFE	PTFE
Body Material and Plating	Brass, Nickel	Brass, Nickel
Body Plating Specification	100 µin minimum	100 µin minimum
Coupling Nut Material and Plating		Brass, Nickel
Coupling Nut Plating Specification		100 µin minimum
Hex Size		1/4 inch

Environmental Specifications

Operating Range Temperature -55 to +165 deg C

Compliance Certifications (see [product page](#) for current document)

Plotted and Other Data

Notes:

## SMC Jack Bulkhead to SMC Plug Cable Using RG316 Coax with HeatShrink



### PE33690/HS

#### Typical Performance Data

#### How to Order

Part Number Configuration:

**PE33690/HS - xx uu**

Unit of Measure:  
cm = Centimeters  
<blank> = Inches

Length

Base Number

Example: PE33690/HS-12 = 12 inches long cable  
PE33690/HS-100cm = 100 cm long cable

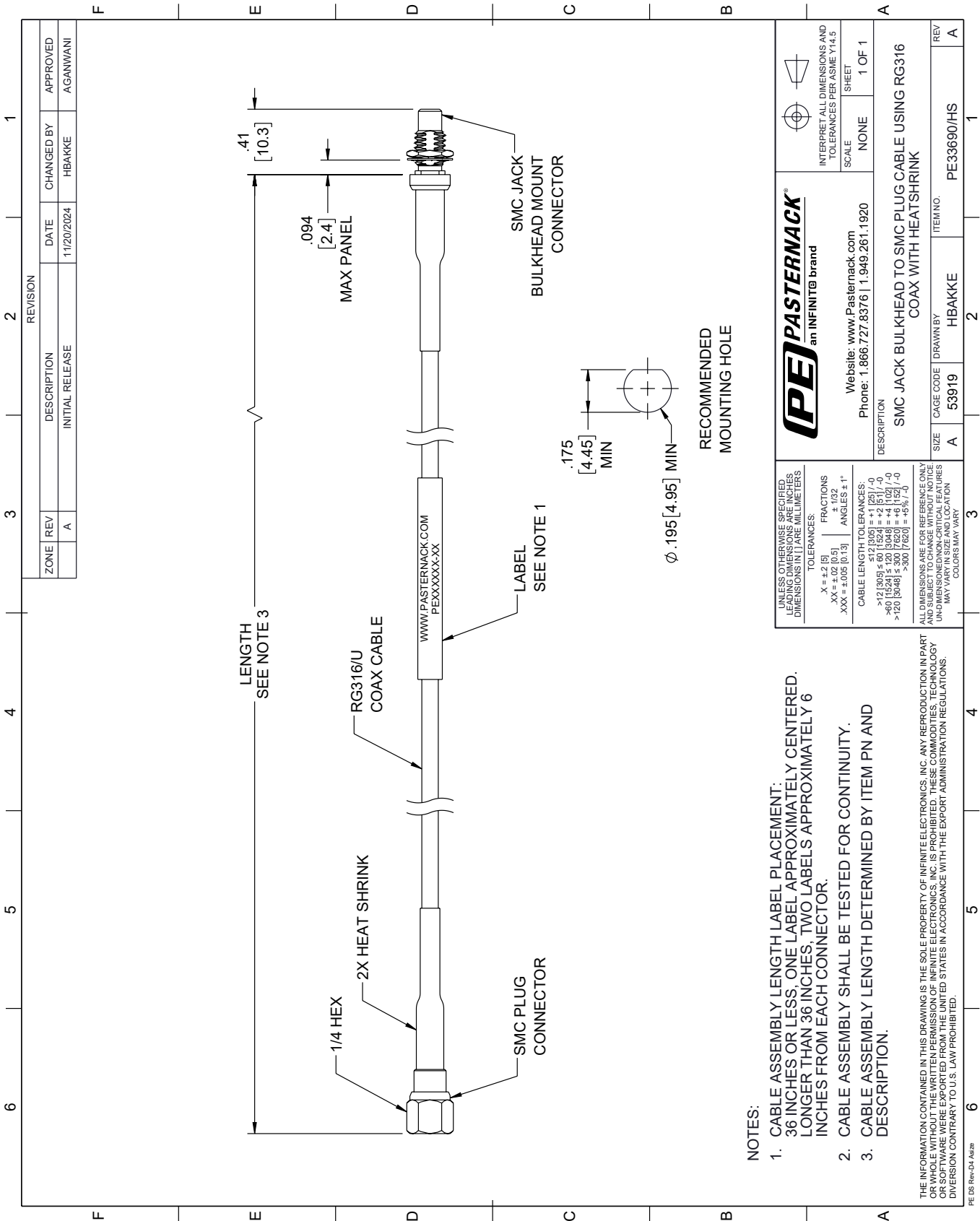
SMC Jack Bulkhead to SMC Plug Cable Using RG316 Coax with HeatShrink from Pasternack Enterprises has same day shipment for domestic and International orders. Our RF, microwave and millimeter wave products maintain a 99.4% availability and are part of the broadest selection in the industry.

Click the following link (or enter part number in "SEARCH" on website) to obtain additional part information including price, inventory and certifications: [SMC Jack Bulkhead to SMC Plug Cable Using RG316 Coax with HeatShrink PE33690/HS](#)

URL: <https://www.pasternack.com/smc-jack-bulkhead-to-smc-plug-cable-using-rg316-with-heatshrink-pe33690-hs-p.aspx>

The information contained within this document is accurate to the best of our knowledge and representative of the part described herein. It may be necessary to make modifications to the part and/or the documentation of the part in order to implement improvements. Pasternack Enterprises reserves the right to make such changes as required. Unless otherwise stated, all specifications are nominal. Pasternack Enterprises does not make any representation or warranty regarding the suitability of the part described herein for any particular purpose, and Pasternack Enterprises does not assume liability arising out of the use of any part or document.

PE33690/HS CAD Drawing
SMC Jack Bulkhead to SMC Plug Cable Using RG316 Coax with HeatShrink



NOTES:

- 1. CABLE ASSEMBLY LENGTH LABEL PLACEMENT: 36 INCHES OR LESS, ONE LABEL APPROXIMATELY CENTERED. LONGER THAN 36 INCHES, TWO LABELS APPROXIMATELY 6 INCHES FROM EACH CONNECTOR.
- 2. CABLE ASSEMBLY SHALL BE TESTED FOR CONTINUITY.
- 3. CABLE ASSEMBLY LENGTH DETERMINED BY ITEM PN AND DESCRIPTION.

THE INFORMATION CONTAINED IN THIS DRAWING IS THE SOLE PROPERTY OF INFINITE ELECTRONICS, INC. ANY REPRODUCTION IN PART OR WHOLE WITHOUT THE WRITTEN PERMISSION OF INFINITE ELECTRONICS, INC. IS PROHIBITED. THESE COMMODITIES, TECHNOLOGY OR SOFTWARE WERE NOT EXPORTED FROM THE UNITED STATES IN ACCORDANCE WITH THE EXPORT ADMINISTRATION REGULATIONS. DIVISION CONTRARY TO U.S. LAW PROHIBITED.

UNLESS OTHERWISE SPECIFIED, LEADING DIMENSIONS ARE IN INCHES. DIMENSIONS IN [ ] ARE MILLIMETERS.		<b>PE PASTERNAK</b> an INFINITI® brand		INTERPRET ALL DIMENSIONS AND TOLERANCES PER ASME Y14.5	
TOLERANCES:		Website: <a href="http://www.Pasternack.com">www.Pasternack.com</a>		SCALE	
X = ±.2 [5]		Phone: 1.866.727.8376   1.949.261.1920		NONE	
.XX = ±.02 [0.5]				SHEET	
.XXX = ±.005 [0.13]				1 OF 1	
ANGLES ± 1°					
CABLE LENGTH TOLERANCES:		DESCRIPTION			
>12 [305] ≤ 60 [1524] = ±1 [25] / -0		SMC JACK BULKHEAD TO SMC PLUG CABLE USING RG316			
>60 [1524] ≤ 120 [3048] = ±4 [102] / -0		COAX WITH HEATSHRINK			
>120 [3048] ≤ 300 [7620] = ±5% / -0					
ALL DIMENSIONS ARE FOR REFERENCE ONLY. UNLESS OTHERWISE SPECIFIED, DIMENSIONS ARE IN INCHES. DIMENSIONS IN [ ] ARE MILLIMETERS. UNLESS OTHERWISE SPECIFIED, DIMENSIONS ARE IN INCHES. DIMENSIONS IN [ ] ARE MILLIMETERS. UNLESS OTHERWISE SPECIFIED, DIMENSIONS ARE IN INCHES. DIMENSIONS IN [ ] ARE MILLIMETERS.		SIZE		REV	
		A		A	
		CAGE CODE		ITEM NO.	
		53919		PE33690/HS	
		DRAWN BY			
		HBAKKE			