

BNC Female Bulkhead to BNC Female Bulkhead Cable Using RG188 Coax with HeatShrink



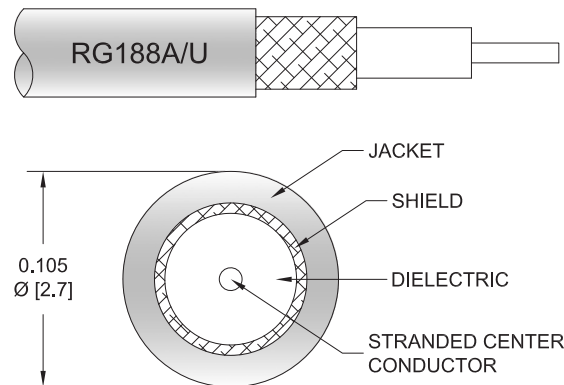
PE3372/HS

Configuration

- Connector 1: BNC Female Bulkhead
- Connector 2: BNC Female Bulkhead
- Cable Type: RG188
- Coax Flex Type: Flexible

Features

- Max Frequency 1 GHz
- PTFE Jacket



Applications

- General Purpose
- Laboratory Use

Description

Pasternack's PE3372/HS BNC female bulkhead to BNC female bulkhead cable using RG188 coax is part of our full line of RF components available for same-day shipping. Pasternack's flexible RF cable assemblies are ideal for applications where tight bends and flexure are required. This Pasternack BNC to BNC cable assembly has a female to female gender configuration with 50 ohm flexible RG188 coax. The PE3372/HS BNC female to BNC female cable assembly operates to 1 GHz. Our RF cable assembly with BNC bulkhead interface allows designers to create external connections on their product enclosures, and can be used in a variety of other rack mount and panel mount applications.

Custom versions of most RF cable assemblies can be built and shipped same day. Custom cable assembly lengths can be obtained by specifying the desired length on the web site at time of order or by contacting a sales representative. Other available RF cable assembly value added services include connector orientation or clocking, heat shrink booting and custom labeling. RF testing can also be performed to document the electrical performance of your cable assembly.

Electrical Specifications

Description	Minimum	Typical	Maximum	Units
Frequency Range	DC		1,000	MHz
VSWR			1.4:1	
Dielectric Withstanding Voltage (AC)			1,500	Vrms

Specifications by Frequency

BNC Female Bulkhead to BNC Female Bulkhead Cable Using RG188 Coax with HeatShrink



PE3372/HS

Part Number	Length	Description	F1	Units	Weight (lbs)
			Frequency	400	
PE3372/HS	Custom Lengths Available	Insertion Loss (Typ.)	0.2	dB/ft	
			0.66	dB/m	
PE3372/HS-12	12 inch	Insertion Loss (Typ.)	0.4	dB	0.1
PE3372/HS-24	24 inch	Insertion Loss (Typ.)	0.6	dB	0.111
PE3372/HS-36	36 inch	Insertion Loss (Typ.)	0.8	dB	0.121
PE3372/HS-48	48 inch	Insertion Loss (Typ.)	1	dB	0.131
PE3372/HS-72	72 inch	Insertion Loss (Typ.)	1.4	dB	0.151

The insertion loss data for the base model does not include loss due to the connectors. Each length includes insertion loss due to the connectors.

Loss due to Connector 1:	0.1 dB
Loss due to Connector 2:	0.1 dB
Base Weight:	0.1 pounds
Additional Weight per Inch:	0.00084 pounds

Mechanical Specifications

Cable Assembly

Width/Diameter	0.5 in [12.7 mm]
Weight	lbs [0 g]

Cable

Cable Type	RG188
Impedance	50 Ohms
Inner Conductor Type	Stranded
Inner Conductor Material and Plating	Copper Clad Steel, Silver
Dielectric Type	PTFE
Number of Shields	1
Shield Layer 1	Silver Plated Copper Braid
Jacket Material	PTFE, White
Jacket Diameter	0.11 in [2.79 mm]

Connectors

Description	Connector 1	Connector 2
Type	BNC Female Bulkhead	BNC Female Bulkhead
Impedance	50 Ohms	50 Ohms
Configuration	Straight	Straight
Contact Material and Plating	Brass, Gold	Brass, Gold
Contact Plating Specification	30 µin minimum	30 µin minimum
Dielectric Type	PTFE	PTFE
Body Material and Plating	Brass, Nickel	Brass, Nickel
Body Plating Specification	100 µin minimum	100 µin minimum

BNC Female Bulkhead to BNC Female Bulkhead Cable Using RG188 Coax with HeatShrink



PE3372/HS

Environmental Specifications

Compliance Certifications (see [product page](#) for current document)

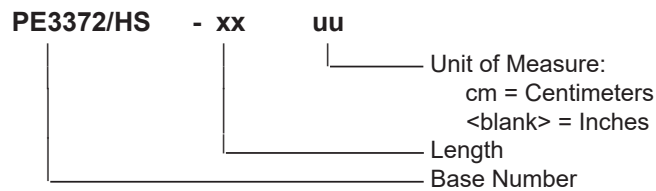
Plotted and Other Data

Notes:

Typical Performance Data

How to Order

Part Number Configuration:



Example: PE3372/HS-12 = 12 inches long cable
PE3372/HS-100cm = 100 cm long cable

BNC Female Bulkhead to BNC Female Bulkhead Cable Using RG188 Coax with HeatShrink from Pasternack Enterprises has same day shipment for domestic and International orders. Our RF, microwave and millimeter wave products maintain a 99.4% availability and are part of the broadest selection in the industry.

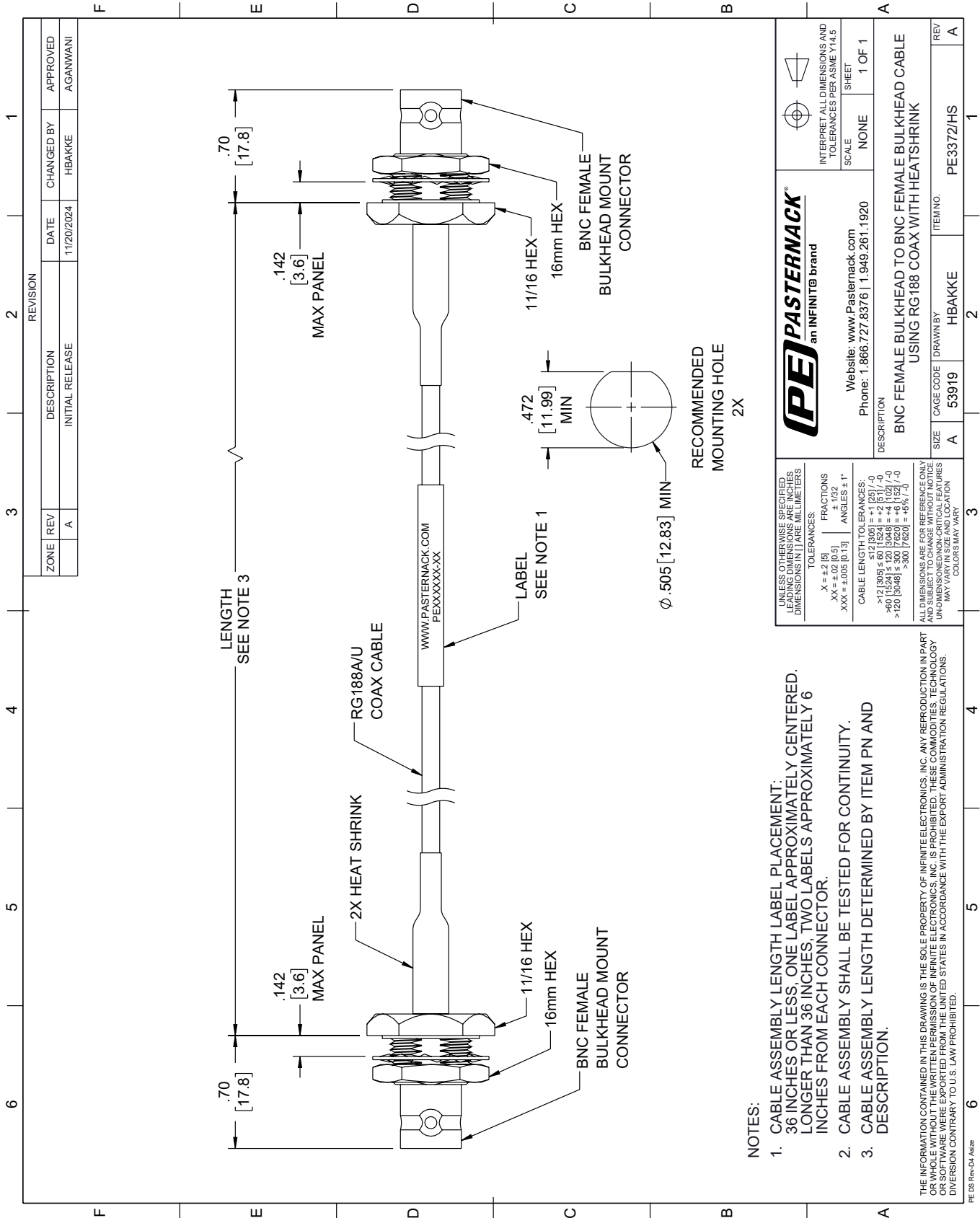
Click the following link (or enter part number in "SEARCH" on website) to obtain additional part information including price, inventory and certifications: [BNC Female Bulkhead to BNC Female Bulkhead Cable Using RG188 Coax with HeatShrink PE3372/HS](#)

URL: <https://www.pasternack.com/bnc-female-bulkhead-to-bnc-female-bulkhead-cable-using-rg188-with-heatshrink-pe3372-hs-p.aspx>

The information contained within this document is accurate to the best of our knowledge and representative of the part described herein. It may be necessary to make modifications to the part and/or the documentation of the part in order to implement improvements. Pasternack Enterprises reserves the right to make such changes as required. Unless otherwise stated, all specifications are nominal. Pasternack Enterprises does not make any representation or warranty regarding the suitability of the part described herein for any particular purpose, and Pasternack Enterprises does not assume liability arising out of the use of any part or document.

PE3372/HS CAD Drawing

BNC Female Bulkhead to BNC Female Bulkhead Cable Using RG188 Coax with HeatShrink



NOTES:

1. CABLE ASSEMBLY LENGTH LABEL PLACEMENT: 36 INCHES OR LESS, ONE LABEL APPROXIMATELY CENTERED. LONGER THAN 36 INCHES, TWO LABELS APPROXIMATELY 6 INCHES FROM EACH CONNECTOR.
2. CABLE ASSEMBLY SHALL BE TESTED FOR CONTINUITY.
3. CABLE ASSEMBLY LENGTH DETERMINED BY ITEM PN AND DESCRIPTION.

THE INFORMATION CONTAINED IN THIS DRAWING IS THE SOLE PROPERTY OF INFINITE ELECTRONICS, INC. ANY REPRODUCTION IN PART OR WHOLE WITHOUT THE WRITTEN PERMISSION OF INFINITE ELECTRONICS, INC. IS PROHIBITED. THESE COMMODITIES, TECHNOLOGY OR SERVICES ARE EXPORTED FROM THE UNITED STATES IN ACCORDANCE WITH THE EXPORT ADMINISTRATION REGULATIONS. DIVERSION CONTRARY TO U.S. LAW PROHIBITED.

<p>PASTERNAK an INFINITE brand</p>		<p>Website: www.Pasternack.com Phone: 1.866.727.8376 1.949.261.1920</p>	
<p>UNLESS OTHERWISE SPECIFIED, LEADING DIMENSIONS ARE IN INCHES. DIMENSIONS IN [] ARE MILLIMETERS.</p>		<p>INTERPRET ALL DIMENSIONS AND TOLERANCES PER ASME Y14.5</p>	
<p>TOLERANCES: X = ±.2 [5] FRACTIONS ± 1/32 XX = ±.02 [0.5] ANGLES ± 1° XXX = ±.005 [0.13]</p>		<p>SCALE: NONE SHEET: 1 OF 1</p>	
<p>CABLE LENGTH TOLERANCES: >12 [305] ≤ 60 [1524] = ±.1 [25] / -0 >60 [1524] ≤ 120 [3048] = ±.4 [102] / -0 >120 [3048] ≤ 300 [7620] = ±.8 [20] / -0</p>		<p>DESCRIPTION: BNC FEMALE BULKHEAD TO BNC FEMALE BULKHEAD CABLE USING RG188 COAX WITH HEATSHRINK</p>	
<p>ALL DIMENSIONS ARE FOR REFERENCE ONLY. UNLESS OTHERWISE SPECIFIED, DIMENSIONS ARE IN INCHES. DIMENSIONS IN [] ARE MILLIMETERS. COLORS MAY VARY.</p>		<p>REV: A</p>	
<p>SIZE: A</p>	<p>CAGE CODE: 53919</p>	<p>DRAWN BY: HBAKKE</p>	<p>ITEM NO.: PE3372/HS</p>