

SMB Plug Right Angle to BNC Male Right Angle Cable Using RG316 Coax



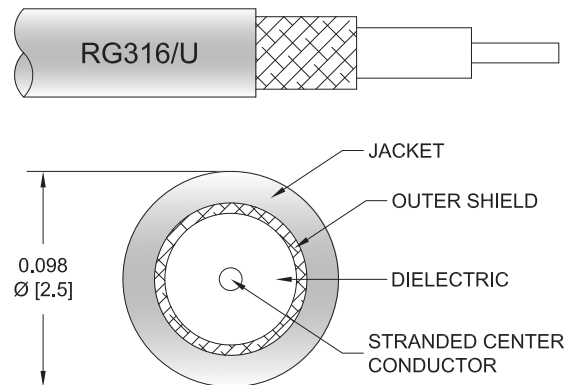
PE33725

Configuration

- Connector 1: SMB Plug Right Angle
- Connector 2: BNC Male Right Angle
- Cable Type: RG316
- Coax Flex Type: Flexible

Features

- Max Frequency 2 GHz
- FEP Jacket



Applications

- General Purpose
- Laboratory Use

Description

Pasternack's PE33725 SMB plug right angle to BNC male right angle cable using RG316 coax is part of our full line of RF components available for same-day shipping. Pasternack's flexible RF cable assemblies are ideal for applications where tight bends and flexure are required. This Pasternack SMB to BNC cable assembly has a plug to male gender configuration with 50 ohm flexible RG316 coax. The PE33725 SMB plug to BNC male cable assembly operates to 2 GHz. The right angle SMB and right angle BNC interfaces on the RG316 cable allow for easier connections in tight spaces.

Custom versions of most RF cable assemblies can be built and shipped same day. Custom cable assembly lengths can be obtained by specifying the desired length on the web site at time of order or by contacting a sales representative. Other available RF cable assembly value added services include connector orientation or clocking, heat shrink booting and custom labeling. RF testing can also be performed to document the electrical performance of your cable assembly.

Electrical Specifications

Description	Minimum	Typical	Maximum	Units
Frequency Range	DC		2	GHz
VSWR			1.4:1	
Capacitance		32 [104.99]		pF/ft [pF/m]

Specifications by Frequency

SMB Plug Right Angle to BNC Male
Right Angle Cable Using RG316 Coax



PE33725

Part Number	Length	Description	F1	F2	F3	F4	F5	Units	Weight (lbs)
			Frequency					MHz	
PE33725	Custom Lengths Available	Insertion Loss (Typ.)	0.08	0.11	0.16	0.24	0.48	dB/ft	
			0.25	0.37	0.53	0.79	1.58	dB/m	
PE33725-12	12 inch	Insertion Loss (Typ.)	0.48	0.51	0.56	0.64	0.88	dB	0.075
PE33725-24	24 inch	Insertion Loss (Typ.)	0.55	0.62	0.72	0.88	1.36	dB	0.086
PE33725-36	36 inch	Insertion Loss (Typ.)	0.63	0.73	0.88	1.12	1.84	dB	0.096
PE33725-48	48 inch	Insertion Loss (Typ.)	0.7	0.84	1.04	1.36	2.32	dB	0.106
PE33725-72	72 inch	Insertion Loss (Typ.)	0.85	1.06	1.36	1.83	3.28	dB	0.126

The insertion loss data for the base model does not include loss due to the connectors. Each length includes insertion loss due to the connectors.

Loss due to Connector 1: 0.2 dB
 Loss due to Connector 2: 0.2 dB
 Base Weight: 0.075 pounds
 Additional Weight per Inch: 0.00084 pounds

Mechanical Specifications

Cable Assembly

Weight 0.075 lbs [34.02 g]

Cable

Cable Type RG316
 Impedance 50 Ohms
 Inner Conductor Type Stranded
 Inner Conductor Material and Plating Copper Clad Steel, Silver
 Dielectric Type PTFE
 Number of Shields 1
 Shield Layer 1 Silver Plated Copper Braid
 Jacket Material FEP, Tan
 Jacket Diameter 0.098 in [2.49 mm]

SMB Plug Right Angle to BNC Male
Right Angle Cable Using RG316 Coax



PE33725

Connectors

Description	Connector 1	Connector 2
Type	SMB Plug Right Angle	BNC Male Right Angle
Specification	MIL-STD-348A	
Impedance	50 Ohms	50 Ohms
Configuration	Right Angle	Right Angle
Contact Material and Plating	Beryllium Copper, Gold	Brass, Gold
Contact Plating Specification	30 µin minimum	30 µin minimum
Dielectric Type	PTFE	PTFE
Outer Conductor Material and Plating	Brass, Nickel	
Outer Conductor Plating Specification	100 µin minimum	
Body Material and Plating	Brass, Nickel	Brass, Nickel
Body Plating Specification	100 µin minimum	100 µin minimum
Coupling Nut Material and Plating		Brass, Nickel
Coupling Nut Plating Specification		100 µin minimum

Environmental Specifications

Operating Range Temperature -55 to +165 deg C

Compliance Certifications (see [product page](#) for current document)

Plotted and Other Data

Notes:
Values at 25°C, sea level.

SMB Plug Right Angle to BNC Male
Right Angle Cable Using RG316 Coax

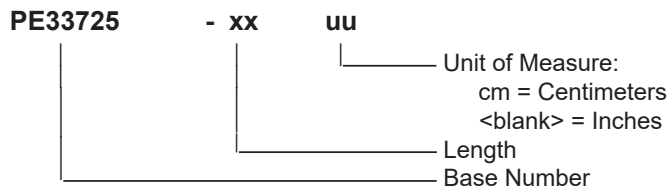


PE33725

Typical Performance Data

How to Order

Part Number Configuration:



Example: PE33725-12 = 12 inches long cable
PE33725-100cm = 100 cm long cable

SMB Plug Right Angle to BNC Male Right Angle Cable Using RG316 Coax from Pasternack Enterprises has same day shipment for domestic and International orders. Our RF, microwave and millimeter wave products maintain a 99.4% availability and are part of the broadest selection in the industry.

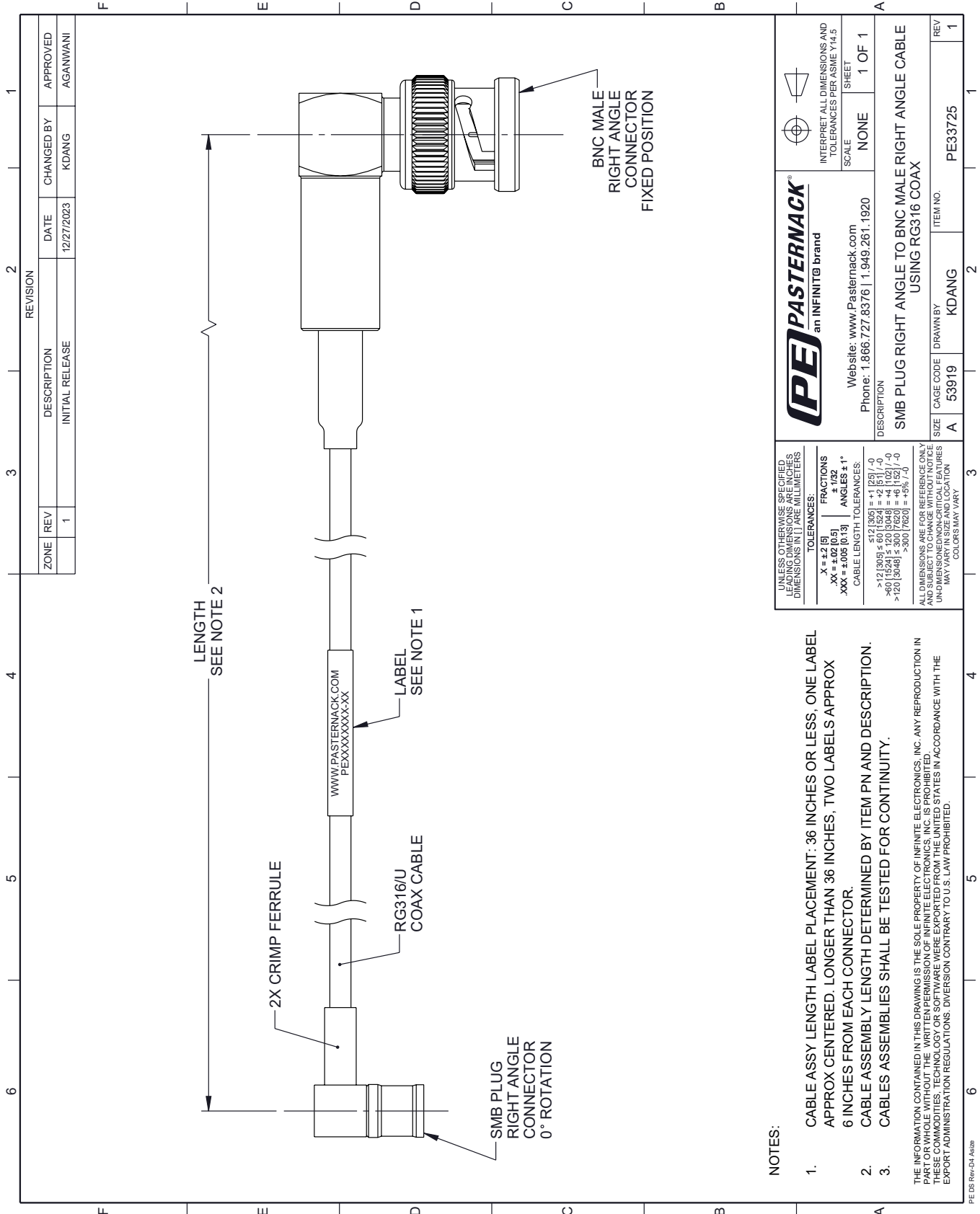
Click the following link (or enter part number in "SEARCH" on website) to obtain additional part information including price, inventory and certifications: [SMB Plug Right Angle to BNC Male Right Angle Cable Using RG316 Coax PE33725](#)

URL: <https://www.pasternack.com/smb-plug-right-angle-to-bnc-male-cable-using-rg316-pe33725-p.aspx>

The information contained within this document is accurate to the best of our knowledge and representative of the part described herein. It may be necessary to make modifications to the part and/or the documentation of the part in order to impliment improvements. Pasternack Enterprises reserves the right to make such changes as required. Unless otherwise stated, all specifications are nominal. Pasternack Enterprises does not make any representation or warranty regarding the suitability of the part described herein for any particular purpose, and Pasternack Enterprises does not assume liability arising out of the use of any part or document.

PE33725 CAD Drawing

SMB Plug Right Angle to BNC Male Right Angle Cable Using RG316 Coax



NOTES:

1. CABLE ASSY LENGTH LABEL PLACEMENT: .36 INCHES OR LESS, ONE LABEL APPROX CENTERED. LONGER THAN .36 INCHES, TWO LABELS APPROX 6 INCHES FROM EACH CONNECTOR.
2. CABLE ASSEMBLY LENGTH DETERMINED BY ITEM PN AND DESCRIPTION.
3. CABLE ASSEMBLIES SHALL BE TESTED FOR CONTINUITY.

THE INFORMATION CONTAINED IN THIS DRAWING IS THE SOLE PROPERTY OF INFINITE ELECTRONICS, INC. ANY REPRODUCTION IN PART OR WHOLE WITHOUT THE WRITTEN PERMISSION OF INFINITE ELECTRONICS, INC. IS PROHIBITED. THESE COMMODITIES, TECHNOLOGY OR SOFTWARE WERE EXPORTED FROM THE UNITED STATES IN ACCORDANCE WITH THE EXPORT ADMINISTRATION REGULATIONS. DIVERSION CONTRARY TO U.S. LAW PROHIBITED.

PE DS Rev-D4 A320

UNLESS OTHERWISE SPECIFIED, LEADING DIMENSIONS ARE IN INCHES. DIMENSIONS IN [] ARE MILLIMETERS.

TOLERANCES:

.X = ±.2 [5]	FRACTIONS ± 1/32
.XX = ±.02 [0.5]	ANGLES ± 1°
.XXX = ±.005 [0.13]	CABLE LENGTH TOLERANCES:

<12 [305] ±.60 [1524] = +1 [25] / -0
 >12 [305] ±.60 [1524] = +4 [102] / -0
 >20 [508] ±.30 [762] = +5% / -0
 >30 [762] ±.30 [762] = +5% / -0

ALL DIMENSIONS ARE FOR REFERENCE ONLY. UNDIMENSIONED NON-CRITICAL FEATURES MAY VARY IN SIZE AND LOCATION. COLORS MAY VARY.

(PE) PASTERNAK®
 an INFINITB brand

Website: www.Pasternack.com
 Phone: 1.866.727.8376 | 1.949.261.1920

INTERPRET ALL DIMENSIONS AND TOLERANCES PER ASME Y14.5

SCALE: NONE
 SHEET: 1 OF 1

DESCRIPTION		ITEM NO.	
SMB PLUG RIGHT ANGLE TO BNC MALE RIGHT ANGLE CABLE USING RG316 COAX		PE33725	
SIZE	CAGE CODE	DRAWN BY	REV
A	53919	KDANG	1