

## N Male Right Angle to SMA Male Right Angle Cable Using RG142 Coax with HeatShrink



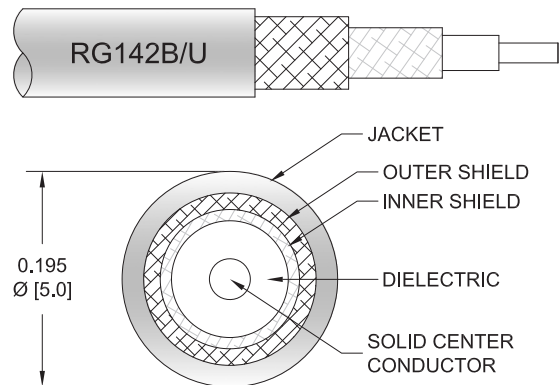
### PE3391/HS

#### Configuration

- Connector 1: N Male Right Angle
- Connector 2: SMA Male Right Angle
- Cable Type: RG142
- Coax Flex Type: Flexible

#### Features

- Max Frequency 1 GHz
- 70% Phase Velocity
- Double Shielded
- FEP Jacket



#### Applications

- General Purpose
- Laboratory Use

#### Description

Pasternack's PE3391/HS type N male right angle to SMA male right angle cable using RG142 coax is part of our full line of RF components available for same-day shipping. Pasternack's flexible RF cable assemblies are ideal for applications where tight bends and flexure are required. This Pasternack type N to SMA cable assembly has a male to male gender configuration with 50 ohm flexible RG142 coax. The PE3391/HS type N male to SMA male cable assembly operates to 1 GHz. The right angle type N and right angle SMA interfaces on the RG142 cable allow for easier connections in tight spaces. The double shielding of this Pasternack cable assembly provides excellent shielding effectiveness.

Custom versions of most RF cable assemblies can be built and shipped same day. Custom cable assembly lengths can be obtained by specifying the desired length on the web site at time of order or by contacting a sales representative. Other available RF cable assembly value added services include connector orientation or clocking, heat shrink booting and custom labeling. RF testing can also be performed to document the electrical performance of your cable assembly.

#### Electrical Specifications

Description	Minimum	Typical	Maximum	Units
Frequency Range	DC		1,000	MHz
VSWR			1.4:1	
Velocity of Propagation		70		%
Capacitance		29.4 [96.46]		pF/ft [pF/m]
Operating Voltage (AC)			500	Vrms

#### Specifications by Frequency

## N Male Right Angle to SMA Male Right Angle Cable Using RG142 Coax with HeatShrink



### PE3391/HS

Part Number	Length	Description	F1	F2	F3	F4	F5	Units	Weight (lbs)
			Frequency					MHz	
PE3391/HS	Custom Lengths Available	Insertion Loss (Typ.)	0.02	0.039	0.059	0.087	0.129	dB/ft	
			0.07	0.13	0.2	0.29	0.43	dB/m	
PE3391/HS-12	12 inch	Insertion Loss (Typ.)	0.42	0.44	0.46	0.49	0.53	dB	0.188
PE3391/HS-24	24 inch	Insertion Loss (Typ.)	0.44	0.48	0.52	0.58	0.66	dB	0.23
PE3391/HS-36	36 inch	Insertion Loss (Typ.)	0.46	0.52	0.58	0.67	0.79	dB	0.272
PE3391/HS-48	48 inch	Insertion Loss (Typ.)	0.48	0.56	0.64	0.75	0.92	dB	0.314
PE3391/HS-60	60 inch	Insertion Loss (Typ.)	0.5	0.6	0.7	0.84	1.05	dB	0.356

The insertion loss data for the base model does not include loss due to the connectors. Each length includes insertion loss due to the connectors.

Loss due to Connector 1:	0.2 dB
Loss due to Connector 2:	0.2 dB
Base Weight:	0.188 pounds
Additional Weight per Inch:	0.0035 pounds

### Mechanical Specifications

#### Cable Assembly

Weight 0.188 lbs [85.28 g]

#### Cable

Cable Type	RG142
Impedance	50 Ohms
Inner Conductor Type	Solid
Inner Conductor Material and Plating	Copper Clad Steel, Silver
Dielectric Type	PTFE
Number of Shields	2
Shield Layer 1	Silver Plated Copper Braid
Shield Layer 2	Silver Plated Copper Braid
Jacket Material	FEP, Tan
Jacket Diameter	0.195 in [4.95 mm]
Repeated Minimum Bend Radius	1 in [25.4 mm]

## N Male Right Angle to SMA Male Right Angle Cable Using RG142 Coax with HeatShrink



### PE3391/HS

#### Connectors

Description	Connector 1	Connector 2
Type	N Male Right Angle	SMA Male Right Angle
Specification	MIL-STD-348A	MIL-STD-348A
Impedance	50 Ohms	50 Ohms
Configuration	Right Angle	Right Angle
Mating Cycles	500	
Contact Material and Plating	Brass, Gold	Brass, Gold
Contact Plating Specification	30 µin minimum	50 µin minimum
Dielectric Type	PTFE	PTFE
Body Material and Plating	Brass, Nickel	Brass, Nickel
Body Plating Specification	100 µin minimum	100 µin minimum
Coupling Nut Material and Plating	Brass, Nickel	Brass, Nickel
Coupling Nut Plating Specification		100 µin minimum
Hex Size		5/16 inch
Torque		3 in-lbs 0.34 Nm

#### Environmental Specifications

Operating Range Temperature -55 to +165 deg C

**Compliance Certifications** (see [product page](#) for current document)

#### Plotted and Other Data

Notes:

## N Male Right Angle to SMA Male Right Angle Cable Using RG142 Coax with HeatShrink



### PE3391/HS

#### Typical Performance Data

#### How to Order

Part Number Configuration:

**PE3391/HS - xx uu**

Unit of Measure:  
cm = Centimeters  
<blank> = Inches

Length

Base Number

Example: PE3391/HS-12 = 12 inches long cable  
PE3391/HS-100cm = 100 cm long cable

N Male Right Angle to SMA Male Right Angle Cable Using RG142 Coax with HeatShrink from Pasternack Enterprises has same day shipment for domestic and International orders. Our RF, microwave and millimeter wave products maintain a 99.4% availability and are part of the broadest selection in the industry.

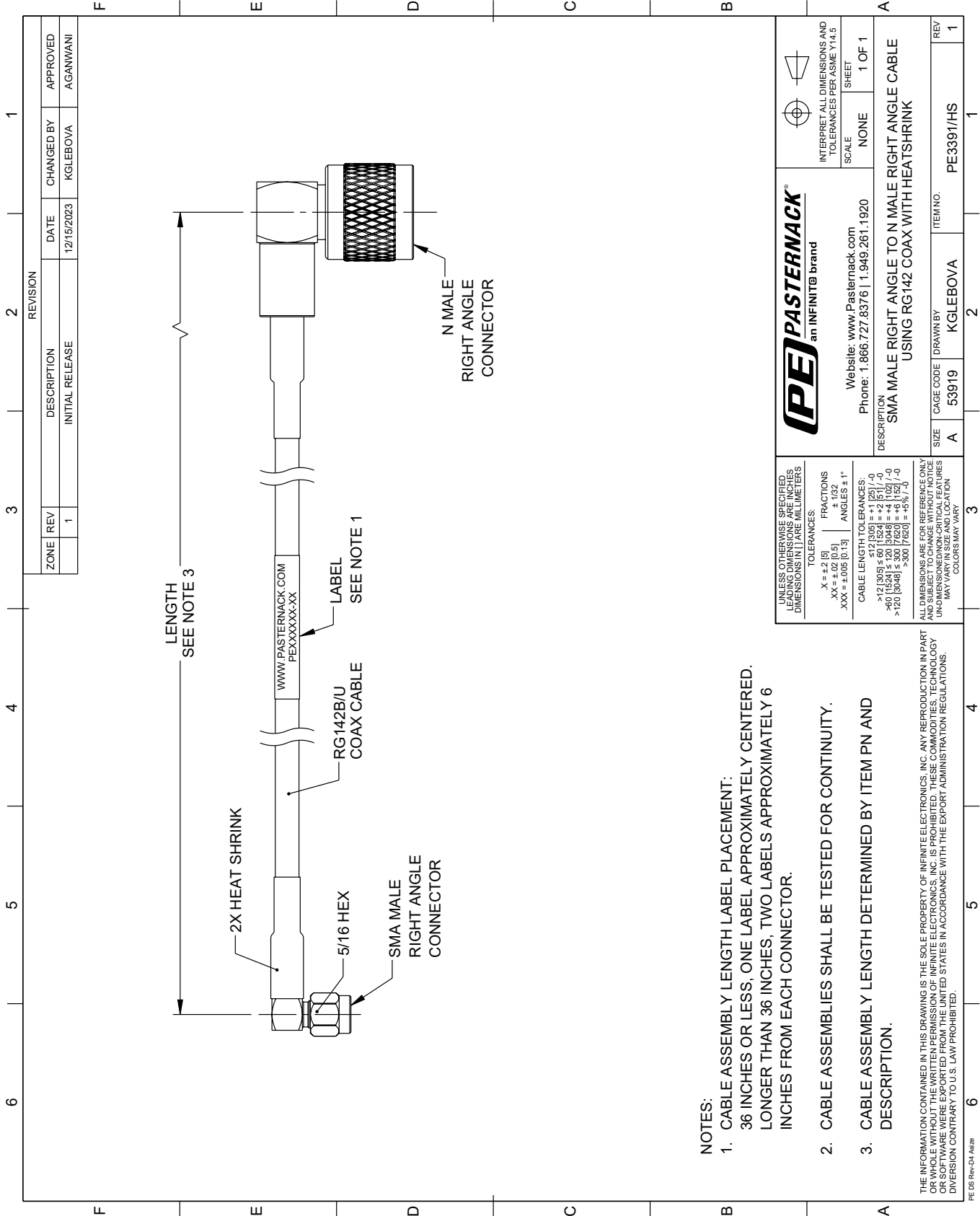
Click the following link (or enter part number in "SEARCH" on website) to obtain additional part information including price, inventory and certifications: [N Male Right Angle to SMA Male Right Angle Cable Using RG142 Coax with HeatShrink PE3391/HS](#)

URL: <https://www.pasternack.com/n-male-right-angle-to-sma-male-cable-using-rg142-with-heatshrink-pe3391-hs-p.aspx>

The information contained within this document is accurate to the best of our knowledge and representative of the part described herein. It may be necessary to make modifications to the part and/or the documentation of the part in order to implement improvements. Pasternack Enterprises reserves the right to make such changes as required. Unless otherwise stated, all specifications are nominal. Pasternack Enterprises does not make any representation or warranty regarding the suitability of the part described herein for any particular purpose, and Pasternack Enterprises does not assume liability arising out of the use of any part or document.

# PE3391/HS CAD Drawing

N Male Right Angle to SMA Male Right Angle Cable Using RG142 Coax with HeatShrink



REVISION		DATE	CHANGED BY	APPROVED
ZONE	REV			
	1	12/15/2023	KGLEBOVA	AGANWANI
DESCRIPTION				
INITIAL RELEASE				

**PE PASTERNAK**  
an INFINITE brand

Website: [www.Pasternack.com](http://www.Pasternack.com)  
Phone: 1.866.727.8376 | 1.949.261.1920

INTERPRET ALL DIMENSIONS AND TOLERANCES PER ASME Y14.5

SCALE: NONE  
SHEET: 1 OF 1

DESCRIPTION: SMA MALE RIGHT ANGLE TO N MALE RIGHT ANGLE CABLE USING RG142 COAX WITH HEATSHRINK

SIZE	A	CAGE CODE	53919	DRAWN BY	KGLEBOVA	ITEM NO.	PE3391/HS	REV	1
------	---	-----------	-------	----------	----------	----------	-----------	-----	---

UNLESS OTHERWISE SPECIFIED, LEADING DIMENSIONS ARE IN INCHES AND DIMENSIONS IN [ ] ARE MILLIMETERS

TOLERANCES:  
 .X = ±.2 [5]  
 .XX = ±.02 [0.5]  
 .XXX = ±.005 [0.13]

FRACTIONS: ±.132  
 ANGLES: ± 1°

CABLE LENGTH TOLERANCES:  
 >12 [305] ≤ 60 [1524] = ±.2 [5] / -0  
 >60 [1524] ≤ 120 [3048] = ±.4 [102] / -0  
 >120 [3048] ≤ 300 [7620] = ±.6 [15] / -0

ALL DIMENSIONS ARE FOR REFERENCE ONLY. UNLESS OTHERWISE SPECIFIED, DIMENSIONS ARE IN INCHES. UNLESS OTHERWISE SPECIFIED, DIMENSIONS ARE IN MILLIMETERS. COLORS MAY VARY.

- NOTES:
- CABLE ASSEMBLY LENGTH LABEL PLACEMENT: 36 INCHES OR LESS, ONE LABEL APPROXIMATELY CENTERED. LONGER THAN 36 INCHES, TWO LABELS APPROXIMATELY 6 INCHES FROM EACH CONNECTOR.
  - CABLE ASSEMBLIES SHALL BE TESTED FOR CONTINUITY.
  - CABLE ASSEMBLY LENGTH DETERMINED BY ITEM PN AND DESCRIPTION.

THE INFORMATION CONTAINED IN THIS DRAWING IS THE SOLE PROPERTY OF INFINITE ELECTRONICS, INC. ANY REPRODUCTION IN PART OR WHOLE WITHOUT THE WRITTEN PERMISSION OF INFINITE ELECTRONICS, INC. IS PROHIBITED. THESE COMMODITIES, TECHNOLOGY OR SOFTWARE WERE EXPORTED FROM THE UNITED STATES IN ACCORDANCE WITH THE EXPORT ADMINISTRATION REGULATIONS. DIVERSION CONTRARY TO U.S. LAW PROHIBITED.