

N Male to BNC Female Cable Using RG142 Coax

PE33915

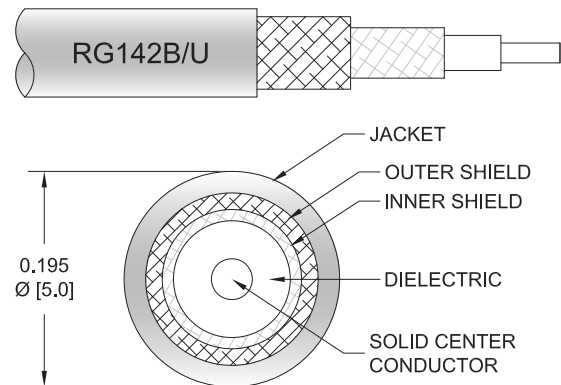


Configuration

- Connector 1: N Male
- Connector 2: BNC Female
- Cable Type: RG142
- Coax Flex Type: Flexible

Features

- Max Frequency 4 GHz
- Shielding Effectivity > 90 dB
- 69.2% Phase Velocity
- Double Shielded
- FEP Jacket



Applications

- General Purpose
- Laboratory Use

Description

Pasternack's PE33915 type N male to BNC female cable using RG142 coax is part of our full line of RF components available for same-day shipping. Pasternack's flexible RF cable assemblies are ideal for applications where tight bends and flexure are required. This Pasternack type N to BNC cable assembly has a male to female gender configuration with 50 ohm flexible RG142 coax. The PE33915 type N male to BNC female cable assembly operates to 4 GHz. The double shielding of this Pasternack cable assembly provides excellent shielding effectiveness of better than 90 dB.

Custom versions of most RF cable assemblies can be built and shipped same day. Custom cable assembly lengths can be obtained by specifying the desired length on the web site at time of order or by contacting a sales representative. Other available RF cable assembly value added services include connector orientation or clocking, heat shrink booting and custom labeling. RF testing can also be performed to document the electrical performance of your cable assembly.

Electrical Specifications

Description	Minimum	Typical	Maximum	Units
Frequency Range	DC		4	GHz
VSWR			1.4:1	
Velocity of Propagation		69.2		%
RF Shielding	90			dB
Capacitance		29.4 [96.46]		pF/ft [pF/m]

Specifications by Frequency

N Male to BNC Female Cable Using RG142 Coax

PE33915



Part Number	Length	Description	F1	F2	F3	F4	F5	Units	Weight (lbs)
		Frequency	100	250	500	1000	4000	MHz	
PE33915	Custom Lengths Available	Insertion Loss (Typ.)	0.039	0.059	0.087	0.129	0.28	dB/ft	
			0.13	0.2	0.29	0.43	0.92	dB/m	
PE33915-12	12 inch	Insertion Loss (Typ.)	0.24	0.26	0.29	0.33	0.48	dB	0.142
PE33915-24	24 inch	Insertion Loss (Typ.)	0.28	0.32	0.38	0.46	0.76	dB	0.184
PE33915-36	36 inch	Insertion Loss (Typ.)	0.32	0.38	0.47	0.59	1.04	dB	0.226
PE33915-48	48 inch	Insertion Loss (Typ.)	0.36	0.44	0.55	0.72	1.32	dB	0.268
PE33915-60	60 inch	Insertion Loss (Typ.)	0.4	0.5	0.64	0.85	1.6	dB	0.31

The insertion loss data for the base model does not include loss due to the connectors. Each length includes insertion loss due to the connectors.

Loss due to Connector 1:	0.1 dB
Loss due to Connector 2:	0.1 dB
Base Weight:	0.142 pounds
Additional Weight per Inch:	0.0035 pounds

Mechanical Specifications

Cable Assembly

Weight	0.142 lbs [64.41 g]
--------	---------------------

Cable

Cable Type	RG142
Impedance	50 Ohms
Inner Conductor Type	Solid
Inner Conductor Material and Plating	Copper Clad Steel, Silver
Dielectric Type	PTFE
Number of Shields	2
Shield Layer 1	Silver Plated Copper Braid
Shield Layer 2	Silver Plated Copper Braid
Jacket Material	FEP, Tan
Jacket Diameter	0.195 in [4.95 mm]
One Time Minimum Bend Radius	0.984 in [24.99 mm]
Repeated Minimum Bend Radius	2 in [50.8 mm]

N Male to BNC Female Cable Using RG142 Coax



PE33915

Connectors

Description	Connector 1	Connector 2
Type	N Male	BNC Female
Specification	MIL-STD-348	
Impedance	50 Ohms	50 Ohms
Configuration	Straight	Straight
Contact Material and Plating	Brass, Silver	Brass, Gold
Contact Plating Specification	ASTM-B700	
Dielectric Type	PTFE	PTFE
Body Material and Plating	Brass, Nickel	Brass, Nickel
Body Plating Specification	ASTM-B689	
Coupling Nut Material and Plating	Brass, Nickel	
Coupling Nut Plating Specification	ASTM-B689	

Environmental Specifications

Operating Range Temperature -55 to +165 deg C

Compliance Certifications (see [product page](#) for current document)

Plotted and Other Data

Notes:
Values at 25°C, sea level.

N Male to BNC Female Cable Using RG142 Coax



PE33915

Typical Performance Data

How to Order

Part Number Configuration:

PE33915

- xx

uu

Unit of Measure:
cm = Centimeters
<blank> = Inches

Length

Base Number

Example: PE33915-12 = 12 inches long cable
PE33915-100cm = 100 cm long cable

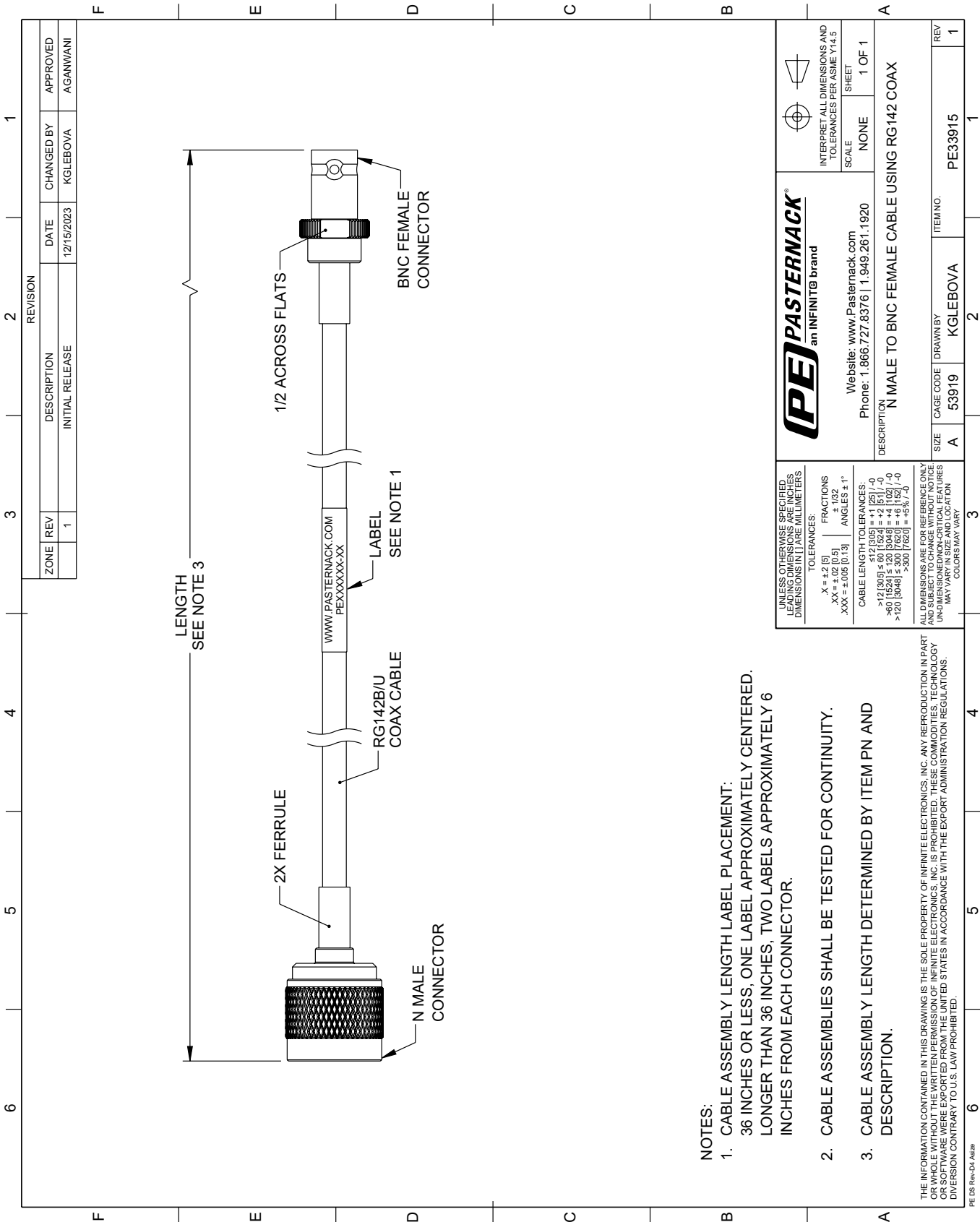
N Male to BNC Female Cable Using RG142 Coax from Pasternack Enterprises has same day shipment for domestic and International orders. Our RF, microwave and millimeter wave products maintain a 99.4% availability and are part of the broadest selection in the industry.

Click the following link (or enter part number in "SEARCH" on website) to obtain additional part information including price, inventory and certifications: [N Male to BNC Female Cable Using RG142 Coax PE33915](#)

URL: <https://www.pasternack.com/n-male-to-bnc-female-cable-using-rg142-pe33915-p.aspx>

The information contained within this document is accurate to the best of our knowledge and representative of the part described herein. It may be necessary to make modifications to the part and/or the documentation of the part in order to implement improvements. Pasternack Enterprises reserves the right to make such changes as required. Unless otherwise stated, all specifications are nominal. Pasternack Enterprises does not make any representation or warranty regarding the suitability of the part described herein for any particular purpose, and Pasternack Enterprises does not assume liability arising out of the use of any part or document.

PE33915 CAD Drawing
N Male to BNC Female Cable Using RG142 Coax



- NOTES:
- 1. CABLE ASSEMBLY LENGTH LABEL PLACEMENT: 36 INCHES OR LESS, ONE LABEL APPROXIMATELY CENTERED. LONGER THAN 36 INCHES, TWO LABELS APPROXIMATELY 6 INCHES FROM EACH CONNECTOR.
 - 2. CABLE ASSEMBLIES SHALL BE TESTED FOR CONTINUITY.
 - 3. CABLE ASSEMBLY LENGTH DETERMINED BY ITEM PN AND DESCRIPTION.

UNLESS OTHERWISE SPECIFIED, ALL DIMENSIONS ARE IN INCHES. DIMENSIONS IN [] ARE IN MILLIMETERS.		PE PASTERNAK an INFINITE® brand		INTERPRET ALL DIMENSIONS AND TOLERANCES PER ASME Y14.5	
TOLERANCES:		Website: www.Pasternack.com		SCALE: NONE	
X = ±.2 [5]		Phone: 1.866.727.8376 1.949.261.1920		SHEET: 1 OF 1	
.XX = ±.02 [0.5]		DESCRIPTION: N MALE TO BNC FEMALE CABLE USING RG142 COAX			
.XXX = ±.005 [0.13]					
ANGLES ± 1°					
CABLE LENGTH TOLERANCES:		SIZE: A		CAGE CODE: 53919	
>12 [305] ≤ 60 [1524] = ±.1 [25] / -0		DRAWN BY: KGLEBOVA		ITEM NO: PE33915	
>60 [1524] ≤ 120 [3048] = ±.1 [25] / -0				REV: 1	
>120 [3048] ≤ 300 [7620] = ±.1 [25] / -0					
ALL DIMENSIONS ARE FOR REFERENCE ONLY. UNDIMENSIONED NON-CRITICAL FEATURES MAY VARY IN SIZE AND LOCATION. COLORS MAY VARY.					