

## SMA Male Right Angle to SMA Female Bulkhead Cable Using RG316-DS Coax with HeatShrink, LF Solder



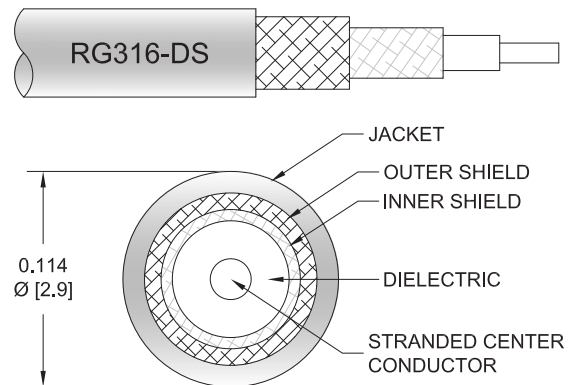
### PE34061LF/HS

#### Configuration

- Connector 1: SMA Male Right Angle
- Connector 2: SMA Female Bulkhead
- Cable Type: RG316-DS
- Coax Flex Type: Flexible

#### Features

- Max Frequency 3 GHz
- 70% Phase Velocity
- Double Shielded
- FEP Jacket



#### Applications

- General Purpose
- Laboratory Use

#### Description

Pasternack's PE34061LF/HS SMA male right angle to SMA female bulkhead cable using RG316-DS coax is part of our full line of RF components available for same-day shipping. Pasternack's flexible RF cable assemblies are ideal for applications where tight bends and flexure are required. This Pasternack SMA to SMA cable assembly has a male to female gender configuration with 50 ohm flexible RG316-DS coax. The PE34061LF/HS SMA male to SMA female cable assembly operates to 3 GHz. The right angle SMA interface on the RG316-DS cable allows for easier connections in tight spaces. Our RF cable assembly with SMA bulkhead interface allows designers to create external connections on their product enclosures, and can be used in a variety of other rack mount and panel mount applications. The double shielding of this Pasternack cable assembly provides excellent shielding effectiveness.

Custom versions of most RF cable assemblies can be built and shipped same day. Custom cable assembly lengths can be obtained by specifying the desired length on the web site at time of order or by contacting a sales representative. Other available RF cable assembly value added services include connector orientation or clocking, heat shrink booting and custom labeling. RF testing can also be performed to document the electrical performance of your cable assembly.

#### Electrical Specifications

Description	Minimum	Typical	Maximum	Units
Frequency Range	DC		3	GHz
VSWR			1.4:1	
Velocity of Propagation		70		%
Capacitance		29.4 [96.46]		pF/ft [pF/m]

#### Specifications by Frequency

SMA Male Right Angle to SMA Female Bulkhead Cable  
Using RG316-DS Coax with HeatShrink, LF Solder



**PE34061LF/HS**

Part Number	Length	Description	F1	F2	F3	F4	F5	Units	Weight (lbs)
			Frequency					MHz	
PE34061LF/HS	Custom Lengths Available	Insertion Loss (Typ.)	0.08	0.13	0.19	0.29	0.536	dB/ft	
			0.28	0.43	0.64	0.96	1.76	dB/m	
PE34061LF/HS-6	6 inch	Insertion Loss (Typ.)	0.35	0.37	0.4	0.45	0.57	dB	0.032
PE34061LF/HS-12	12 inch	Insertion Loss (Typ.)	0.39	0.43	0.5	0.59	0.84	dB	0.039
PE34061LF/HS-24	24 inch	Insertion Loss (Typ.)	0.47	0.56	0.69	0.88	1.38	dB	0.054
PE34061LF/HS-36	36 inch	Insertion Loss (Typ.)	0.55	0.69	0.89	1.17	1.91	dB	0.068
PE34061LF/HS-48	48 inch	Insertion Loss (Typ.)	0.64	0.82	1.08	1.46	2.45	dB	0.082

The insertion loss data for the base model does not include loss due to the connectors. Each length includes insertion loss due to the connectors.

Loss due to Connector 1: 0.2 dB  
 Loss due to Connector 2: 0.1 dB  
 Base Weight: 0.039 pounds  
 Additional Weight per Inch: 0.00117 pounds

**Mechanical Specifications**

**Cable Assembly**

Width/Diameter 0.5 in [12.7 mm]

**Cable**

Cable Type RG316-DS  
 Impedance 50 Ohms  
 Inner Conductor Type Stranded  
 Inner Conductor Material and Plating Copper Clad Steel, Silver  
 Dielectric Type PTFE  
 Number of Shields 2  
 Shield Layer 1 Silver Plated Copper Braid  
 Shield Layer 2 Silver Plated Copper Braid  
 Jacket Material FEP, Tan  
 Jacket Diameter 0.114 in [2.9 mm]  
 Repeated Minimum Bend Radius 0.6 in [15.24 mm]

SMA Male Right Angle to SMA Female Bulkhead Cable  
Using RG316-DS Coax with HeatShrink, LF Solder



**PE34061LF/HS**

**Connectors**

Description	Connector 1	Connector 2
Type	SMA Male Right Angle	SMA Female Bulkhead
Specification	MIL-STD-348A	
Impedance	50 Ohms	50 Ohms
Configuration	Right Angle	Straight
Contact Material and Plating	Brass, Gold	Gold
Contact Plating Specification	50 µin minimum	
Dielectric Type	PTFE	
Body Material and Plating	Brass, Nickel	Brass, Nickel
Body Plating Specification	100 µin minimum	
Coupling Nut Material and Plating	Brass, Nickel	
Coupling Nut Plating Specification	100 µin minimum	
Hex Size	5/16 inch	
Torque	3 in-lbs 0.34 Nm	

**Environmental Specifications**

**Compliance Certifications** (see [product page](#) for current document)

**Plotted and Other Data**

Notes:

SMA Male Right Angle to SMA Female Bulkhead Cable  
Using RG316-DS Coax with HeatShrink, LF Solder

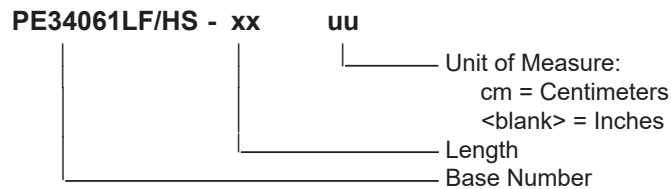


**PE34061LF/HS**

**Typical Performance Data**

**How to Order**

Part Number Configuration:



Example: PE34061LF/HS-12 = 12 inches long cable  
PE34061LF/HS-100cm = 100 cm long cable

SMA Male Right Angle to SMA Female Bulkhead Cable Using RG316-DS Coax with HeatShrink, LF Solder from Pasternack Enterprises has same day shipment for domestic and International orders. Our RF, microwave and millimeter wave products maintain a 99.4% availability and are part of the broadest selection in the industry.

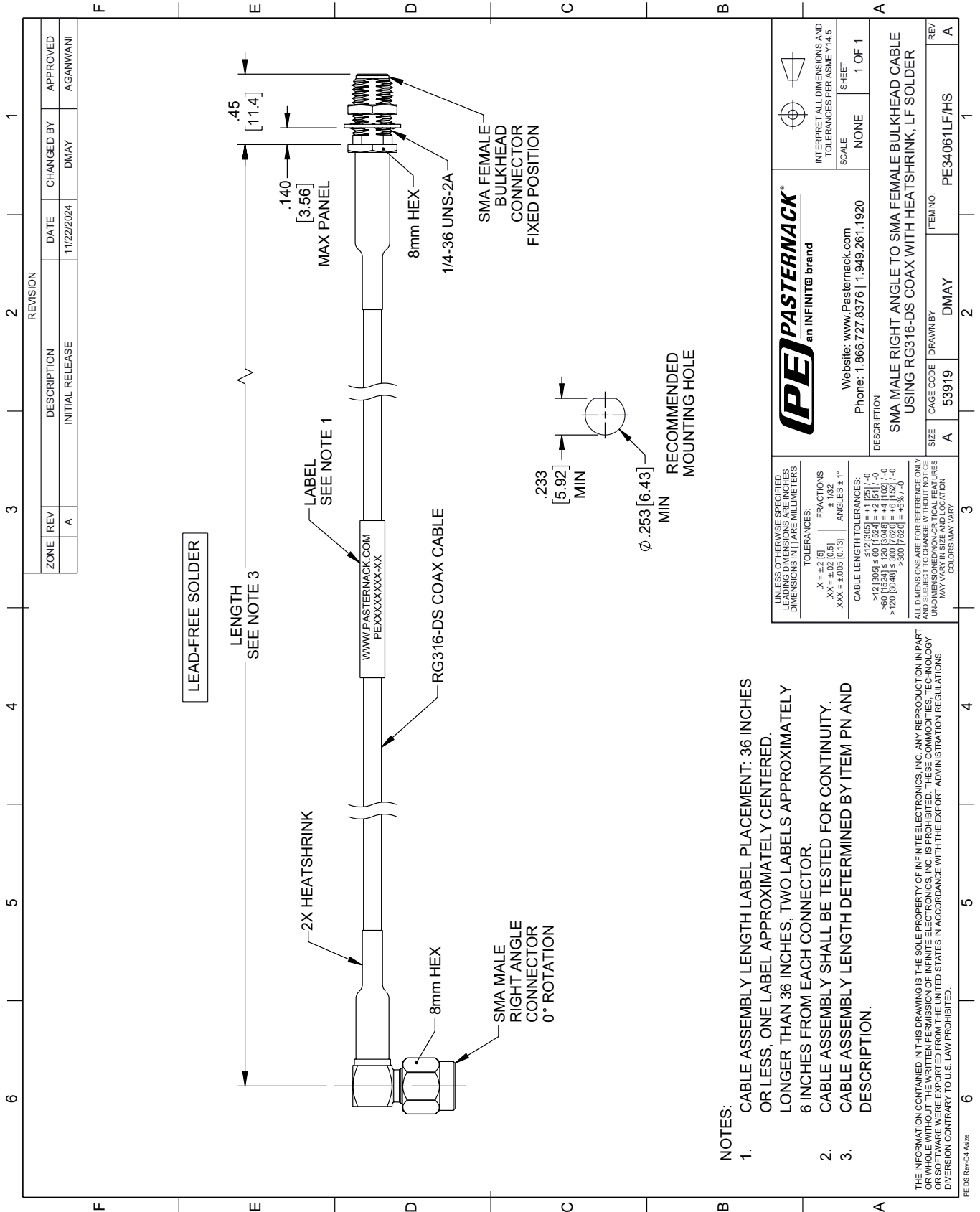
Click the following link (or enter part number in "SEARCH" on website) to obtain additional part information including price, inventory and certifications: [SMA Male Right Angle to SMA Female Bulkhead Cable Using RG316-DS Coax with HeatShrink, LF Solder PE34061LF/HS](#)

URL: <https://www.pasternack.com/sma-male-right-angle-to-sma-female-bulkhead-cable-using-rg316-ds-with-heatshrink-lf-solder-pe34061lf-hs-p.aspx>

The information contained within this document is accurate to the best of our knowledge and representative of the part described herein. It may be necessary to make modifications to the part and/or the documentation of the part in order to impliment improvements. Pasternack Enterprises reserves the right to make such changes as required. Unless otherwise stated, all specifications are nominal. Pasternack Enterprises does not make any representation or warranty regarding the suitability of the part described herein for any particular purpose, and Pasternack Enterprises does not assume liability arising out of the use of any part or document.

# PE34061LF/HS CAD Drawing

SMA Male Right Angle to SMA Female Bulkhead Cable Using RG316-DS Coax with HeatShrink, LF Solder



### NOTES:

1. CABLE ASSEMBLY LENGTH LABEL PLACEMENT: 36 INCHES OR LESS, ONE LABEL APPROXIMATELY CENTERED. LONGER THAN 36 INCHES, TWO LABELS APPROXIMATELY 6 INCHES FROM EACH CONNECTOR.
2. CABLE ASSEMBLY SHALL BE TESTED FOR CONTINUITY.
3. CABLE ASSEMBLY LENGTH DETERMINED BY ITEM PN AND DESCRIPTION.

THE INFORMATION CONTAINED IN THIS DRAWING IS THE SOLE PROPERTY OF INFINITE ELECTRONICS, INC. ANY REPRODUCTION IN PART OR WHOLE WITHOUT THE WRITTEN PERMISSION OF INFINITE ELECTRONICS, INC. IS PROHIBITED. THESE COMMODITIES, TECHNOLOGY OR SOFTWARE ARE EXPORTED FROM THE UNITED STATES IN ACCORDANCE WITH THE EXPORT ADMINISTRATION REGULATIONS. DIVERSION CONTRARY TO U.S. LAW PROHIBITED.

PE DS Rev-04 Add2

REVISION		DATE	CHANGED BY	APPROVED
ZONE	REV	DESCRIPTION	INITIAL RELEASE	
	A			AGANWANI

		INTERPRET ALL DIMENSIONS AND TOLERANCES PER ASME Y14.5	
Website: <a href="http://www.Pasternack.com">www.Pasternack.com</a> Phone: 1.866.727.8376   1.949.261.1920		SCALE	NONE
DESCRIPTION SMA MALE RIGHT ANGLE TO SMA FEMALE BULKHEAD CABLE USING RG316-DS COAX WITH HEATSHRINK, LF SOLDER		SHEET	1 OF 1
SIZE	A	CAGE CODE	DMAY
ITEM NO.	53919	ITEM NO.	PE34061LF/HS
REV	A	REV	A

UNLESS OTHERWISE SPECIFIED, LEADING DIMENSIONS ARE IN INCHES. DIMENSIONS IN [ ] ARE MILLIMETERS.

TOLERANCES:

.X = ±.2 [5]	FRACTIONS ± 1/32
.XX = ±.02 [0.5]	ANGLES ± 1°
.XXX = ±.005 [0.13]	

CABLE LENGTH TOLERANCES:

>12 [305] ≤ 60 [1524] = ±1 [25] / -0
>60 [1524] ≤ 120 [3048] = ±4 [102] / -0
>120 [3048] ≤ 300 [7620] = ±5% / 0

ALL DIMENSIONS ARE FOR REFERENCE ONLY. UNLESS OTHERWISE SPECIFIED, ALL DIMENSIONS ARE NON-CRITICAL FEATURES. UNLESS OTHERWISE SPECIFIED, DIMENSIONS MAY VARY. COLORS MAY VARY.