

N Male to N Male Cable 24 Inch Length Using PE-SR402AL Coax

PE34138-24

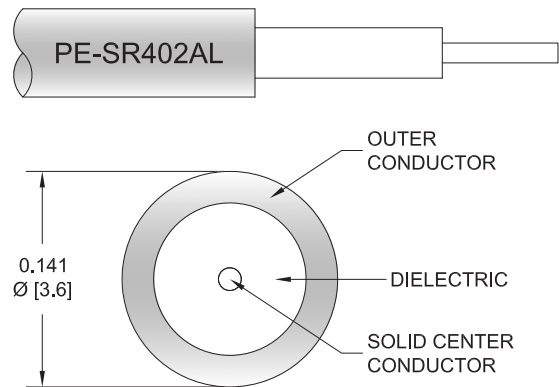


Configuration

- Connector 1: N Male
- Connector 2: N Male
- Cable Type: PE-SR402AL
- Coax Flex Type: Semi-Rigid

Features

- Max Frequency 11 GHz



Applications

- General Purpose
- Laboratory Use

Description

Pasternack's PE34138-24 type N male to type N male 24 inch cable using PE-SR402AL coax is part of our full line of RF components available for same-day shipping. Pasternack's semi-rigid RF cable assemblies are ideal for high performance applications and can be formed, using proper tooling, to the routing pattern required. This Pasternack type N to type N cable assembly has a male to male gender configuration with 50 ohm semi-rigid PE-SR402AL coax. The PE34138-24 type N male to type N male cable assembly operates to 11 GHz.

Custom versions of most RF cable assemblies can be built and shipped same day. Custom cable assembly lengths can be obtained by specifying the desired length on the web site at time of order or by contacting a sales representative. Other available RF cable assembly value added services include connector orientation or clocking, heat shrink booting and custom labeling. RF testing can also be performed to document the electrical performance of your cable assembly.

Electrical Specifications

| Description | Minimum | Typical | Maximum | Units |
|-----------------|---------|---------|---------|-------|
| Frequency Range | DC | | 11 | GHz |
| VSWR | | | 1.4:1 | |

Specifications by Frequency

| Description | F1 | F2 | F3 | F4 | F5 | Units |
|-----------------------|------|------|------|-------|------|-------|
| Frequency | 0.5 | 1 | 2.5 | 5 | 11 | GHz |
| Insertion Loss (Typ.) | 0.33 | 0.46 | 0.57 | 0.753 | 1.17 | dB |

Mechanical Specifications

Cable Assembly

Width/Diameter

0.827 in [21.01 mm]

Weight

0.206 lbs [93.44 g]

N Male to N Male Cable 24 Inch Length Using PE-SR402AL Coax



PE34138-24

Cable

| | |
|--|---------------------------|
| Cable Type | PE-SR402AL |
| Impedance | 50 Ohms |
| Inner Conductor Type | Solid |
| Inner Conductor Material and Plating | Copper Clad Steel, Silver |
| Dielectric Type | PTFE |
| Number of Shields | 1 |
| Outer Conductor 1 Material and Plating | Tinned Aluminum |
| Repeated Minimum Bend Radius | 0.15 in [3.81 mm] |

Connectors

| Description | Connector 1 | Connector 2 |
|-------------------------------|----------------|----------------|
| Type | N Male | N Male |
| Impedance | 50 Ohms | 50 Ohms |
| Configuration | Straight | Straight |
| Contact Material and Plating | Brass, Gold | Brass, Gold |
| Contact Plating Specification | 20 µin minimum | 20 µin minimum |
| Dielectric Type | PTFE | PTFE |
| Body Material and Plating | Brass, Gold | Brass, Gold |
| Body Plating Specification | 80 µin minimum | 80 µin minimum |
| Seal Gasket Material | Silicone | Silicone |

Environmental Specifications

| | |
|-----------------------------|-------------------|
| Operating Range Temperature | -55 to +125 deg C |
|-----------------------------|-------------------|

Compliance Certifications (see [product page](#) for current document)

Plotted and Other Data

Notes:
Values at 25°C, sea level.

N Male to N Male Cable 24 Inch Length Using PE-SR402AL Coax



PE34138-24

Typical Performance Data

How to Order

Part Number Configuration:

PE34138

- xx

uu

Unit of Measure:

cm = Centimeters

<blank> = Inches

Length

Base Number

Example: PE34138-12 = 12 inches long cable
PE34138-100cm = 100 cm long cable

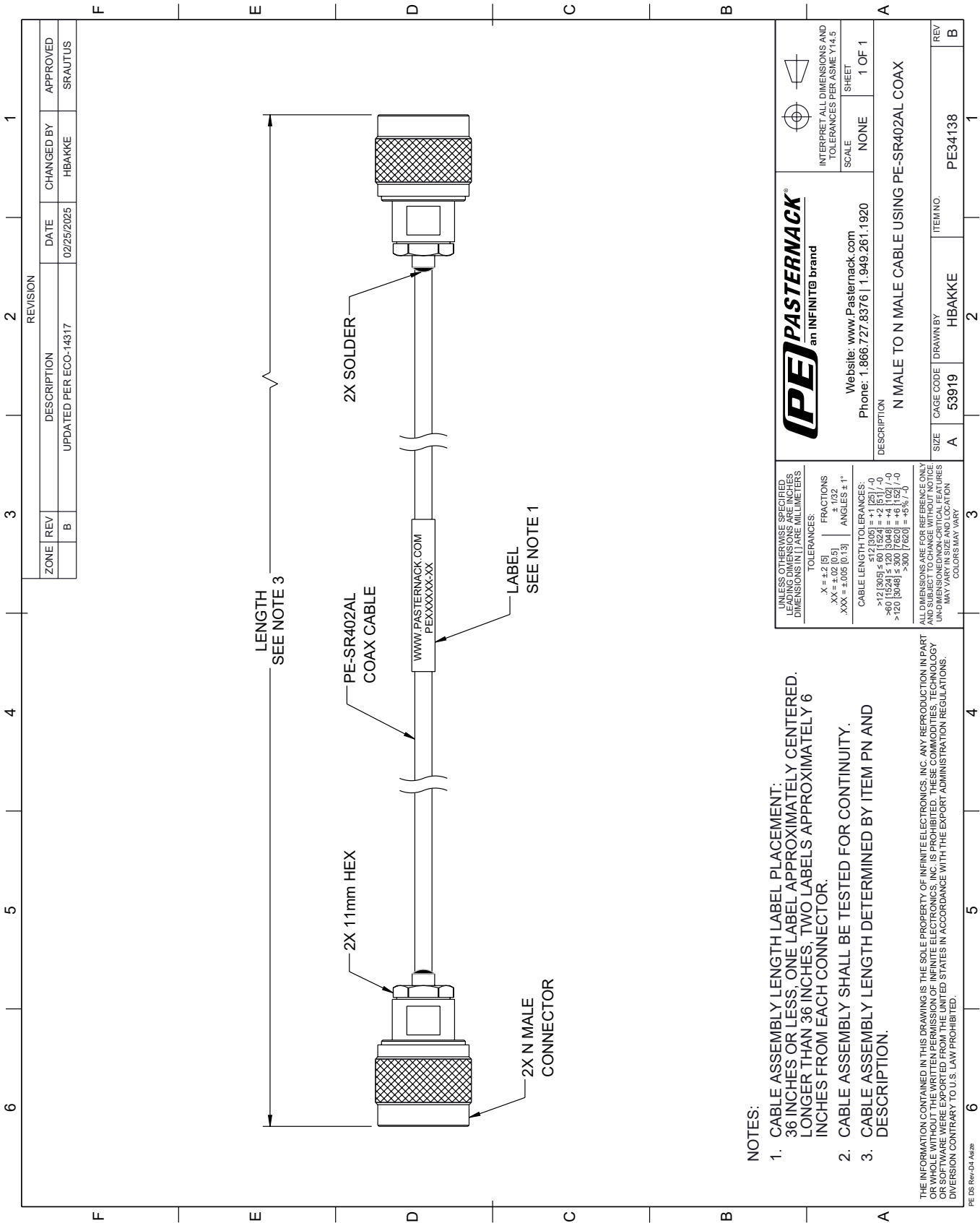
N Male to N Male Cable 24 Inch Length Using PE-SR402AL Coax from Pasternack Enterprises has same day shipment for domestic and International orders. Our RF, microwave and millimeter wave products maintain a 99.4% availability and are part of the broadest selection in the industry.

Click the following link (or enter part number in "SEARCH" on website) to obtain additional part information including price, inventory and certifications: [N Male to N Male Cable 24 Inch Length Using PE-SR402AL Coax PE34138-24](#)

URL: <https://www.pasternack.com/n-male-to-n-male-cable-24-inch-length-using-pe-sr402al-pe34138-24-p.aspx>

The information contained within this document is accurate to the best of our knowledge and representative of the part described herein. It may be necessary to make modifications to the part and/or the documentation of the part in order to implement improvements. Pasternack Enterprises reserves the right to make such changes as required. Unless otherwise stated, all specifications are nominal. Pasternack Enterprises does not make any representation or warranty regarding the suitability of the part described herein for any particular purpose, and Pasternack Enterprises does not assume liability arising out of the use of any part or document.

PE34138-24 CAD Drawing
N Male to N Male Cable 24 Inch Length Using PE-SR402AL Coax



NOTES:

- 1. CABLE ASSEMBLY LENGTH LABEL PLACEMENT: 36 INCHES OR LESS, ONE LABEL APPROXIMATELY CENTERED. LONGER THAN 36 INCHES, TWO LABELS APPROXIMATELY 6 INCHES FROM EACH CONNECTOR.
- 2. CABLE ASSEMBLY SHALL BE TESTED FOR CONTINUITY.
- 3. CABLE ASSEMBLY LENGTH DETERMINED BY ITEM PN AND DESCRIPTION.

THE INFORMATION CONTAINED IN THIS DRAWING IS THE SOLE PROPERTY OF INFINITE ELECTRONICS, INC. ANY REPRODUCTION IN PART OR WHOLE WITHOUT THE WRITTEN PERMISSION OF INFINITE ELECTRONICS, INC. IS PROHIBITED. THESE COMMODITIES, TECHNOLOGY OR SOFTWARE WERE NOT EXPORTED FROM THE UNITED STATES IN ACCORDANCE WITH THE EXPORT ADMINISTRATION REGULATIONS. DIVISION CONTRARY TO U.S. LAW PROHIBITED.

| | | | | | |
|--|--|---|--|--|--|
| UNLESS OTHERWISE SPECIFIED, LEADING DIMENSIONS ARE IN INCHES. DIMENSIONS IN [] ARE MILLIMETERS. | | PE PASTERNAK an INFINITE brand | | INTERPRET ALL DIMENSIONS AND TOLERANCES PER ASME Y14.5 | |
| TOLERANCES: | | Website: www.Pasternack.com | | SCALE | |
| X = ±.2 [5] | | Phone: 1.866.727.8376 1.949.261.1920 | | NONE | |
| .XX = ±.02 [0.5] | | | | SHEET | |
| .XXX = ±.005 [0.13] | | | | 1 OF 1 | |
| FRACTIONS | | | | | |
| ± 1/32 | | | | | |
| ANGLES ± 1° | | | | | |
| CABLE LENGTH TOLERANCES: | | | | | |
| ±.12 [3.05] | | | | | |
| >.12 [3.05] ≤ .60 [15.24] = ±.12 [3.05] / -0 | | | | | |
| >.60 [15.24] ≤ 120 [3048] = ±.12 [3.05] / -0 | | | | | |
| >120 [3048] ≤ 300 [7620] = ±.12 [3.05] / -0 | | | | | |
| >300 [7620] = ±.12 [3.05] / -0 | | | | | |
| ALL DIMENSIONS ARE FOR REFERENCE ONLY. DIMENSIONS SHALL BE DETERMINED BY THE UNLESS OTHERWISE SPECIFIED. UNDIMENSIONED NON-CRITICAL FEATURES MAY VARY IN SIZE AND LOCATION. COLORS MAY VARY. | | | | | |
| DESCRIPTION | | N MALE TO N MALE CABLE USING PE-SR402AL COAX | | | |
| SIZE | | CAGE CODE | | ITEM NO. | |
| A | | 53919 | | PE34138 | |
| DRAWN BY | | HBAKKE | | REV | |
| 2 | | | | B | |