

SMA Male to SMB Plug Cable 12 Inch Length Using PE-B100 Coax



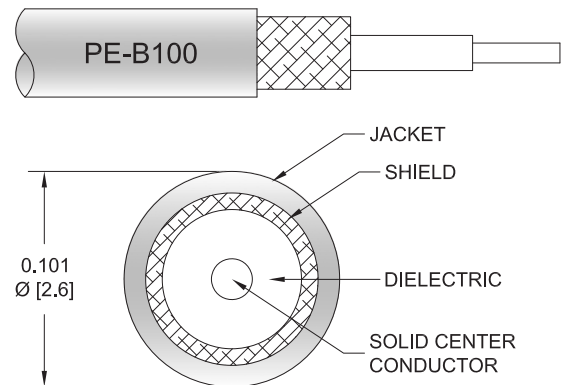
PE34455LF-12

Configuration

- Connector 1: SMA Male
- Connector 2: SMB Plug
- Cable Type: PE-B100
- Coax Flex Type: Flexible

Features

- Max Frequency 4 GHz
- 62% Phase Velocity
- Double Shielded
- PVC Jacket



Applications

- General Purpose
- Laboratory Use

Description

Pasternack's PE34455LF-12 SMA male to SMB plug 12 inch cable using PE-B100 coax is part of our full line of RF components available for same-day shipping. Pasternack's flexible RF cable assemblies are ideal for applications where tight bends and flexure are required. This Pasternack SMA to SMB cable assembly has a male to plug gender configuration with 50 ohm flexible PE-B100 coax. The PE34455LF-12 SMA male to SMB plug cable assembly operates to 4 GHz. The double shielding of this Pasternack cable assembly provides excellent shielding effectiveness.

Custom versions of most RF cable assemblies can be built and shipped same day. Custom cable assembly lengths can be obtained by specifying the desired length on the web site at time of order or by contacting a sales representative. Other available RF cable assembly value added services include connector orientation or clocking, heat shrink booting and custom labeling. RF testing can also be performed to document the electrical performance of your cable assembly.

Electrical Specifications

Description	Minimum	Typical	Maximum	Units
Frequency Range	DC		4	GHz
VSWR			1.4:1	
Velocity of Propagation		62		%
Capacitance		38 [124.67]		pF/ft [pF/m]
Operating Voltage (AC)			335	Vrms

Mechanical Specifications

Cable Assembly

Width/Diameter	0.312 in [7.92 mm]
Weight	0.013 lbs [5.9 g]

SMA Male to SMB Plug Cable 12 Inch Length Using PE-B100 Coax



PE34455LF-12

Cable

Cable Type	PE-B100
Impedance	50 Ohms
Inner Conductor Type	Stranded
Inner Conductor Material and Plating	Copper Clad Steel
Dielectric Type	PE
Number of Shields	2
Shield Layer 1	PVC
Shield Layer 2	Tinned Copper Braid
Jacket Material	PVC, Black
Jacket Diameter	0.101 in [2.57 mm]

Connectors

Description	Connector 1	Connector 2
Type	SMA Male	SMB Plug
Specification	MIL-STD-348A	MIL-STD-348A
Impedance	50 Ohms	50 Ohms
Configuration	Straight	Straight
Contact Material and Plating	Brass, Gold	Beryllium Copper, Gold
Contact Plating Specification	30μ in. Minimum	30μ in. minimum
Dielectric Type	PTFE	Teflon
Body Material and Plating	Brass, Nickel	Brass, Nickel
Body Plating Specification	100μ in. Minimum	100μ in. minimum
Coupling Nut Material and Plating	Brass, Nickel	
Coupling Nut Plating Specification	100μ in. Minimum	
Hex Size	5/16 in	
Torque	5 in-lbs 0.57 Nm	

Environmental Specifications

Compliance Certifications (see [product page](#) for current document)

Plotted and Other Data

Notes:
Values at 25°C, sea level.

SMA Male to SMB Plug Cable 12 Inch Length Using PE-B100 Coax

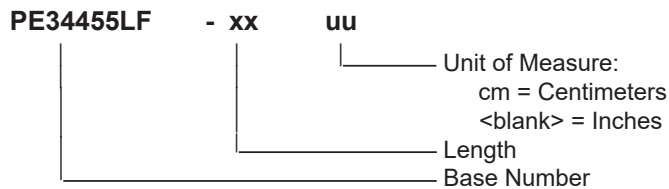


PE34455LF-12

Typical Performance Data

How to Order

Part Number Configuration:



Example: PE34455LF-12 = 12 inches long cable
PE34455LF-100cm = 100 cm long cable

SMA Male to SMB Plug Cable 12 Inch Length Using PE-B100 Coax from Pasternack Enterprises has same day shipment for domestic and International orders. Our RF, microwave and millimeter wave products maintain a 99.4% availability and are part of the broadest selection in the industry.

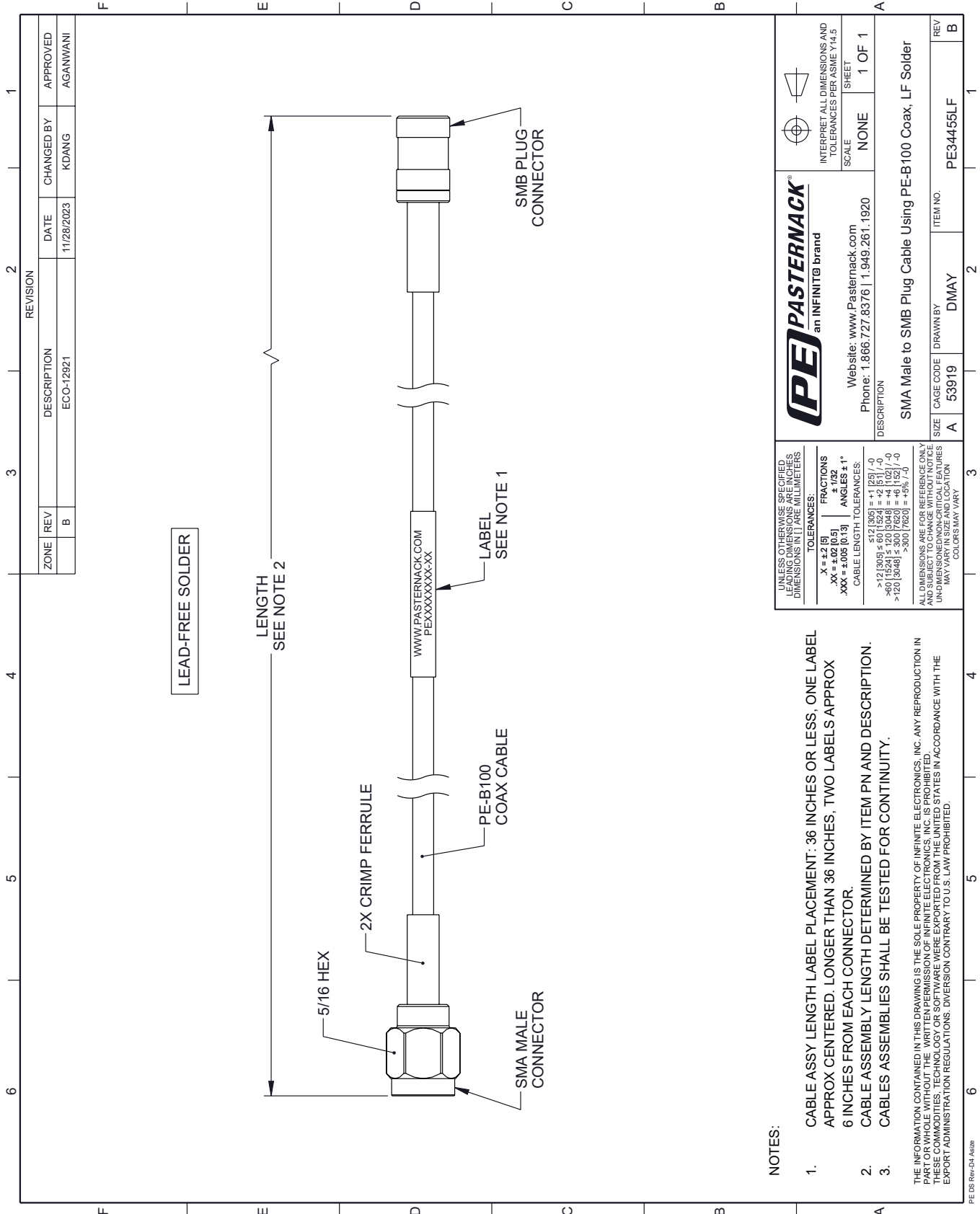
Click the following link (or enter part number in "SEARCH" on website) to obtain additional part information including price, inventory and certifications: [SMA Male to SMB Plug Cable 12 Inch Length Using PE-B100 Coax PE34455LF-12](https://www.pasternack.com/sma-male-smb-plug-pe-b100-cable-assembly-pe34455lf-12-p.aspx)

URL: <https://www.pasternack.com/sma-male-smb-plug-pe-b100-cable-assembly-pe34455lf-12-p.aspx>

The information contained within this document is accurate to the best of our knowledge and representative of the part described herein. It may be necessary to make modifications to the part and/or the documentation of the part in order to implement improvements. Pasternack Enterprises reserves the right to make such changes as required. Unless otherwise stated, all specifications are nominal. Pasternack Enterprises does not make any representation or warranty regarding the suitability of the part described herein for any particular purpose, and Pasternack Enterprises does not assume liability arising out of the use of any part or document.

PE34455LF-12 CAD Drawing

SMA Male to SMB Plug Cable 12 Inch Length Using PE-B100 Coax




NOTES:

1. CABLE ASSY LENGTH LABEL PLACEMENT: .36 INCHES OR LESS, ONE LABEL APPROX CENTERED. LONGER THAN .36 INCHES, TWO LABELS APPROX .6 INCHES FROM EACH CONNECTOR.
2. CABLE ASSEMBLY LENGTH DETERMINED BY ITEM PN AND DESCRIPTION.
3. CABLE ASSEMBLIES SHALL BE TESTED FOR CONTINUITY.

THE INFORMATION CONTAINED IN THIS DRAWING IS THE SOLE PROPERTY OF INFINITE ELECTRONICS, INC. ANY REPRODUCTION IN PART OR WHOLE WITHOUT THE WRITTEN PERMISSION OF INFINITE ELECTRONICS, INC. IS PROHIBITED. THESE COMMODITIES, TECHNOLOGY OR SOFTWARE WERE EXPORTED FROM THE UNITED STATES IN ACCORDANCE WITH THE EXPORT ADMINISTRATION REGULATIONS. DIVERSION CONTRARY TO U.S. LAW PROHIBITED.

PE DS Rev-D4 A4326

REVISION		DATE	CHANGED BY	APPROVED
ZONE	REV			
	B	11/28/2023	KDANG	AGANWANI
DESCRIPTION				
ECO-12921				

 PASTERNAK an INFINITE brand		INTERPRET ALL DIMENSIONS AND TOLERANCES PER ASME Y14.5 SCALE NONE SHEET 1 OF 1
Website: www.Pasternack.com Phone: 1.866.727.8376 1.949.261.1920		
DESCRIPTION		
SMA Male to SMB Plug Cable Using PE-B100 Coax, LF Solder		
SIZE	CAGE CODE	ITEM NO.
A	53919	PE34455LF
SIZE	DRAWN BY	REV
	DMAY	B

UNLESS OTHERWISE SPECIFIED, LEADING DIMENSIONS ARE IN INCHES. DIMENSIONS IN [] ARE MILLIMETERS.

TOLERANCES:
 .X = ±.2 [5]
 .XX = ±.02 [0.5]
 .XXX = ±.005 [0.13]

FRACTIONS
 ± 1/32
 ANGLES ± 1°

CABLE LENGTH TOLERANCES:
 <12 [305] ±.60 [1524] = +1 [25] / -0
 >12 [305] ±.60 [1524] = +2 [51] / -0
 >40 [1024] ±.120 [3048] = +4 [102] / -0
 >120 [3048] ±.300 [7620] = +5% / -0
 >300 [7620] ±.9% / -0

ALL DIMENSIONS ARE FOR REFERENCE ONLY. UNDIMENSIONED NON-CRITICAL FEATURES MAY VARY IN SIZE AND LOCATION. COLORS MAY VARY.