



SMA Female 2 Hole Flange to SMA Female 2 Hole Flange Cable 60 Inch Length Using RG402 Coax, RoHS

RF Cable Assemblies Technical Data Sheet

PE3525LF-60

Configuration

- Connector 1: SMA Female 2 Hole Flange
- Connector 2: SMA Female 2 Hole Flange
- Cable Type: RG402

Features

- Max Frequency 18 GHz

Applications

- General Purpose
- Laboratory Use

Description

Pasternack's PE3525LF-60 SMA female 2 hole flange to SMA female 2 hole flange 60 inch cable using RG402 coax is part of our full line of RF components available for same-day shipping. Pasternack's semi-rigid RF cable assemblies are ideal for high performance applications and can be formed, using proper tooling, to the routing pattern required. This Pasternack SMA to SMA cable assembly has a female to female gender configuration with 50 ohm semi-rigid RG402 coax. The PE3525LF-60 SMA female to SMA female cable assembly operates to 18 GHz. Our RF cable assembly with SMA 2 hole flange interface allows designers to create external connections on their product enclosures, and can be used in a variety of other rack mount and panel mount applications.

Custom versions of most RF cable assemblies can be built and shipped same day. Custom cable assembly lengths can be obtained by specifying the desired length on the web site at time of order or by contacting a sales representative. Other available RF cable assembly value added services include connector orientation or clocking, heat shrink booting and custom labeling. RF testing can also be performed to document the electrical performance of your cable assembly.

Electrical Specifications

Description	Minimum	Typical	Maximum	Units
Frequency Range	DC		18	GHz
VSWR			1.4:1	
Capacitance		29.9 [98.1]		pF/ft [pF/m]

Specifications by Frequency

Description	F1	F2	F3	F4	F5	Units
Frequency	1	2	4.5	9	18	GHz
Insertion Loss (Typ.)	0.754	0.97	1.5	2.22	3.379	dB

Electrical Specification Notes:

Click the following link (or enter part number in "SEARCH" on website) to obtain additional part information including price, inventory and certifications: [SMA Female 2 Hole Flange to SMA Female 2 Hole Flange Cable 60 Inch Length Using RG402 Coax, RoHS PE3525LF-60](#)



SMA Female 2 Hole Flange to SMA Female 2 Hole Flange
Cable 60 Inch Length Using RG402 Coax, RoHS

RF Cable Assemblies Technical Data Sheet

PE3525LF-60

The Insertion Loss data above is based on the performance specifications of the coax cable used in this assembly. The Insertion Loss includes an estimated insertion loss of 0.1 dB per connector.

Mechanical Specifications

Cable Assembly

Length*	60 in [152.4 cm]
Diameter	0.25 in [6.35 mm]
Weight	0.184 lbs [83.46 g]

Cable

Cable Type	RG402
Impedance	50 Ohms
Inner Conductor Type	Solid
Inner Conductor Material and Plating	Copper Clad Steel, Silver
Dielectric Type	PTFE
Number of Shields	1
Shield Layer 1	Copper

Connectors

Description	Connector 1	Connector 2
Type	SMA Female 2 Hole Flange	SMA Female 2 Hole Flange
Specification	MIL-STD-348	MIL-STD-348
Impedance	50 Ohms	50 Ohms
Contact Material and Plating	Beryllium Copper, Gold	Beryllium Copper, Gold
Contact Plating Specification	MIL-G-45204, Type II, Class 2	MIL-G-45204, Type II, Class 2
Dielectric Type	Teflon	Teflon
Body Material and Plating	Stainless Steel, Gold	Stainless Steel, Gold
Body Plating Specification	MIL-G-45204	MIL-G-45204

Compliance Certifications (see [product page](#) for current document)

Plotted and Other Data

Notes:

- Values at 25°C, sea level.

Click the following link (or enter part number in "SEARCH" on website) to obtain additional part information including price, inventory and certifications: [SMA Female 2 Hole Flange to SMA Female 2 Hole Flange Cable 60 Inch Length Using RG402 Coax, RoHS PE3525LF-60](#)



SMA Female 2 Hole Flange to SMA Female 2 Hole Flange Cable 60 Inch Length Using RG402 Coax, RoHS

RF Cable Assemblies Technical Data Sheet

PE3525LF-60

How to Order

Part Number Configuration:

PE3525LF - **xx** **uu**

Unit of Measure:
cm = Centimeters
<blank> = Inches
Length
Base Number

Example: PE3525LF-12 = 12 inches long cable
 PE3525LF-100cm = 100 cm long cable

SMA Female 2 Hole Flange to SMA Female 2 Hole Flange Cable 60 Inch Length Using RG402 Coax, RoHS from Pasternack Enterprises has same day shipment for domestic and International orders. Our RF, microwave and millimeter wave products maintain a 99.4% availability and are part of the broadest selection in the industry.

Click the following link (or enter part number in "SEARCH" on website) to obtain additional part information including price, inventory and certifications: [SMA Female 2 Hole Flange to SMA Female 2 Hole Flange Cable 60 Inch Length Using RG402 Coax, RoHS PE3525LF-60](https://www.pasternack.com/sma-female-sma-female-rg402u-cable-assembly-pe3525lf-60-p.aspx)

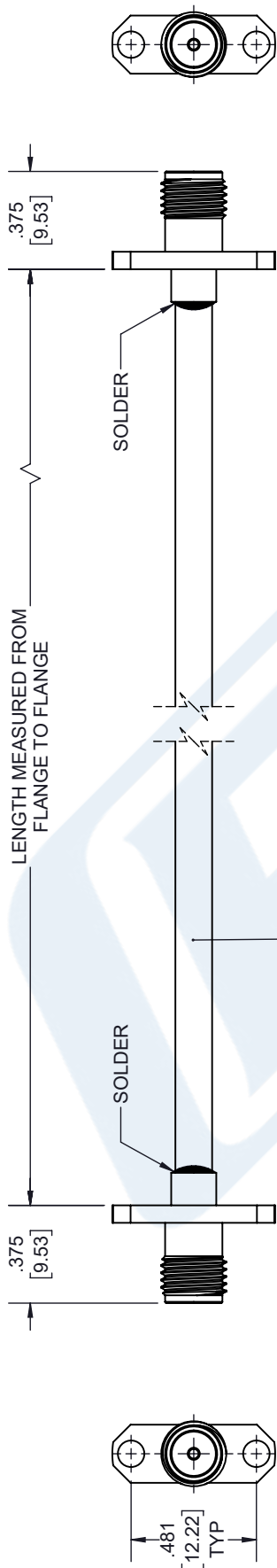
URL: <https://www.pasternack.com/sma-female-sma-female-rg402u-cable-assembly-pe3525lf-60-p.aspx>

The information contained in this document is accurate to the best of our knowledge and representative of the part described herein. It may be necessary to make modifications to the part and/or the documentation of the part, in order to implement improvements. Pasternack reserves the right to make such changes as required. Unless otherwise stated, all specifications are nominal. Pasternack does not make any representation or warranty regarding the suitability of the part described herein for any particular purpose, and Pasternack does not assume any liability arising out of the use of any part or documentation.

PE3525LF-60 CAD Drawing

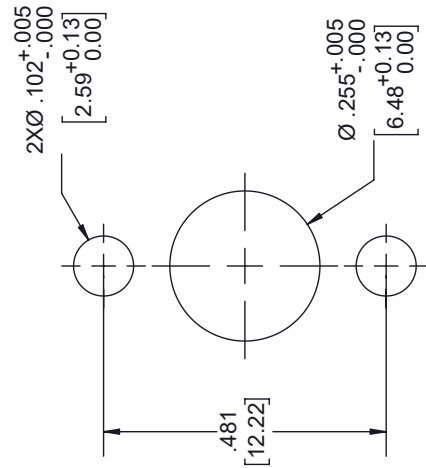
SMA Female 2 Hole Flange to SMA Female 2 Hole Flange
Cable 60 Inch Length Using RG402 Coax, RoHS

REVISIONS			
REV.	DESCRIPTION	DATE	APPROVED
A	PCR PE3525	9/28/2020	S. ELLIS



SMA FEMALE
2 HOLE FLANGE MOUNTING

SMA FEMALE
2 HOLE FLANGE MOUNTING



MOUNTING HOLE
(2X)

UNLESS OTHERWISE SPECIFIED
LEADING DIMENSIONS ARE INCHES
DIMENSIONS IN [] ARE MILLIMETERS

TOLERANCES:

X = ±.2	[.008]	FRACTIONS
.XX = ±.02	[.51]	±.1/32
.XXX = ±.005	[.13]	ANGLES ± 1°

CABLE LENGTH (L) TOLERANCES:

L ≤ 12 [305]	±.1 [25] / -0
12 [305] < L ≤ 60 [1524]	±.2 [51] / -0
60 [1524] < L ≤ 120 [3048]	±.4 [102] / -0
120 [3048] < L ≤ 300 [7620]	±.6 [152] / -0
300 [7620] < L	±.5% / -0

ALL DIMENSIONS SHOWN
ARE FOR REFERENCE ONLY.

PE PASTERNAK
an INFINITE brand

Pasternack Enterprises, Inc.
P.O. Box 16759, Irvine, CA 92623.
Phone: 1.949.261.1920 | 1.866.727.8376
Fax: 1.949.261.7451
Website: www.pasternack.com
E-mail: sales@pasternack.com

SIZE A CAGE CODE 53919 DRAWN BY K.DANG ITEM NO. PE3525LF REV A

THIRD-ANGLE PROJECTION

THE INFORMATION AND
DESIGN IN THIS DOCUMENT
IS THE PROPERTY OF
PASTERNAK CORPORATION
ALL RIGHTS RESERVED.

SHEET 1 OF 1
SCALE N/A