

## MMCX Plug Right Angle to MMCX Plug Right Angle Cable Using RG178 Coax with 180 Deg. Clock



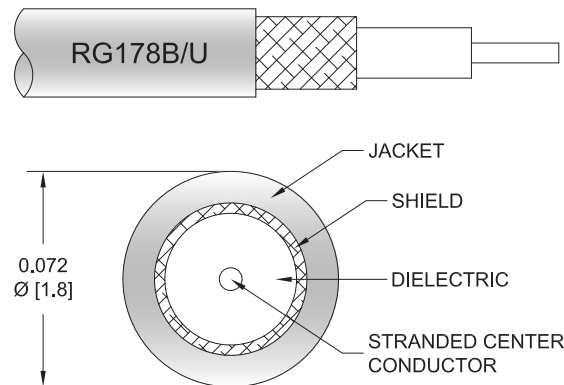
### PE35444/PH180

#### Configuration

- Connector 1: MMCX Plug Right Angle
- Connector 2: MMCX Plug Right Angle
- Cable Type: RG178
- Coax Flex Type: Flexible

#### Features

- Max Frequency 3 GHz
- 70% Phase Velocity
- FEP Jacket



#### Applications

- General Purpose
- Laboratory Use

#### Description

Pasternack's PE35444/PH180 MMCX plug right angle to MMCX plug right angle cable using RG178 coax is part of our full line of RF components available for same-day shipping. Pasternack's flexible RF cable assemblies are ideal for applications where tight bends and flexure are required. This Pasternack MMCX to MMCX cable assembly has a plug to plug gender configuration with 50 ohm flexible RG178 coax. The PE35444/PH180 MMCX plug to MMCX plug cable assembly operates to 3 GHz. The right angle MMCX interfaces on the RG178 cable allow for easier connections in tight spaces.

Custom versions of most RF cable assemblies can be built and shipped same day. Custom cable assembly lengths can be obtained by specifying the desired length on the web site at time of order or by contacting a sales representative. Other available RF cable assembly value added services include connector orientation or clocking, heat shrink booting and custom labeling. RF testing can also be performed to document the electrical performance of your cable assembly.

#### Electrical Specifications

Description	Minimum	Typical	Maximum	Units
Frequency Range	DC		3	GHz
VSWR			1.4:1	
Velocity of Propagation		70		%
Capacitance		29.4 [96.46]		pF/ft [pF/m]
Operating Voltage (AC)			170	Vrms

#### Specifications by Frequency

MMCX Plug Right Angle to MMCX Plug Right Angle  
Cable Using RG178 Coax with 180 Deg. Clock



**PE35444/PH180**

Part Number	Length	Description	F1	F2	F3	F4	F5	Units	Weight (lbs)
			Frequency		100	250	500	1000	
PE35444/PH180	Custom Lengths Available	Insertion Loss (Typ.)	0.14	0.21	0.31	0.44	0.784	dB/ft	
			0.46	0.69	1.01	1.46	2.58	dB/m	
PE35444/PH180-6	6 inch	Insertion Loss (Typ.)	0.47	0.51	0.56	0.63	0.8	dB	0.019
PE35444/PH180-9	9 inch	Insertion Loss (Typ.)	0.51	0.56	0.63	0.74	0.99	dB	0.02
PE35444/PH180-12	12 inch	Insertion Loss (Typ.)	0.54	0.61	0.71	0.85	1.19	dB	0.021
PE35444/PH180-24	24 inch	Insertion Loss (Typ.)	0.68	0.82	1.02	1.29	1.97	dB	0.027
PE35444/PH180-36	36 inch	Insertion Loss (Typ.)	0.82	1.03	1.32	1.74	2.76	dB	0.032

The insertion loss data for the base model does not include loss due to the connectors. Each length includes insertion loss due to the connectors.

Loss due to Connector 1: 0.2 dB  
 Loss due to Connector 2: 0.2 dB  
 Base Weight: 0.021 pounds  
 Additional Weight per Inch: 0.00042 pounds

**Mechanical Specifications**

**Cable Assembly**

Width/Diameter 0.5 in [12.7 mm]  
 Weight 0.016 lbs [7.26 g]

**Cable**

Cable Type RG178  
 Impedance 50 Ohms  
 Inner Conductor Type Stranded  
 Inner Conductor Material and Plating Copper Clad Steel, Silver  
 Dielectric Type PTFE  
 Number of Shields 1  
 Shield Layer 1 Silver Plated Copper Braid  
 Jacket Material FEP, Tan  
 Jacket Diameter 0.072 in [1.83 mm]  
 Repeated Minimum Bend Radius 0.4 in [10.16 mm]

MMCX Plug Right Angle to MMCX Plug Right Angle  
Cable Using RG178 Coax with 180 Deg. Clock



## PE35444/PH180

### Connectors

Description	Connector 1	Connector 2
Type	MMCX Plug Right Angle	MMCX Plug Right Angle
Specification	BS EN 122340	BS EN 122340
Impedance	50 Ohms	50 Ohms
Configuration	Right Angle	Right Angle
Contact Material and Plating	Brass, Gold	Brass, Gold
Contact Plating Specification	30 µin minimum	30 µin minimum
Dielectric Type	PTFE	PTFE
Body Material and Plating	Brass, Gold	Brass, Gold
Body Plating Specification	3 µin minimum	3 µin minimum

### Environmental Specifications

Operating Range Temperature -55 to +155 deg C

**Compliance Certifications** (see [product page](#) for current document)

### Plotted and Other Data

Notes:

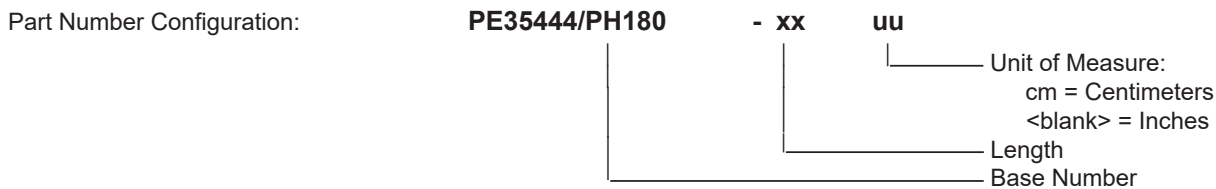
MMCX Plug Right Angle to MMCX Plug Right Angle  
Cable Using RG178 Coax with 180 Deg. Clock



**PE35444/PH180**

**Typical Performance Data**

**How to Order**



Example:    PE35444/PH180-12 = 12 inches long cable  
              PE35444/PH180-100cm = 100 cm long cable

MMCX Plug Right Angle to MMCX Plug Right Angle Cable Using RG178 Coax with 180 Deg. Clock from Pasternack Enterprises has same day shipment for domestic and International orders. Our RF, microwave and millimeter wave products maintain a 99.4% availability and are part of the broadest selection in the industry.

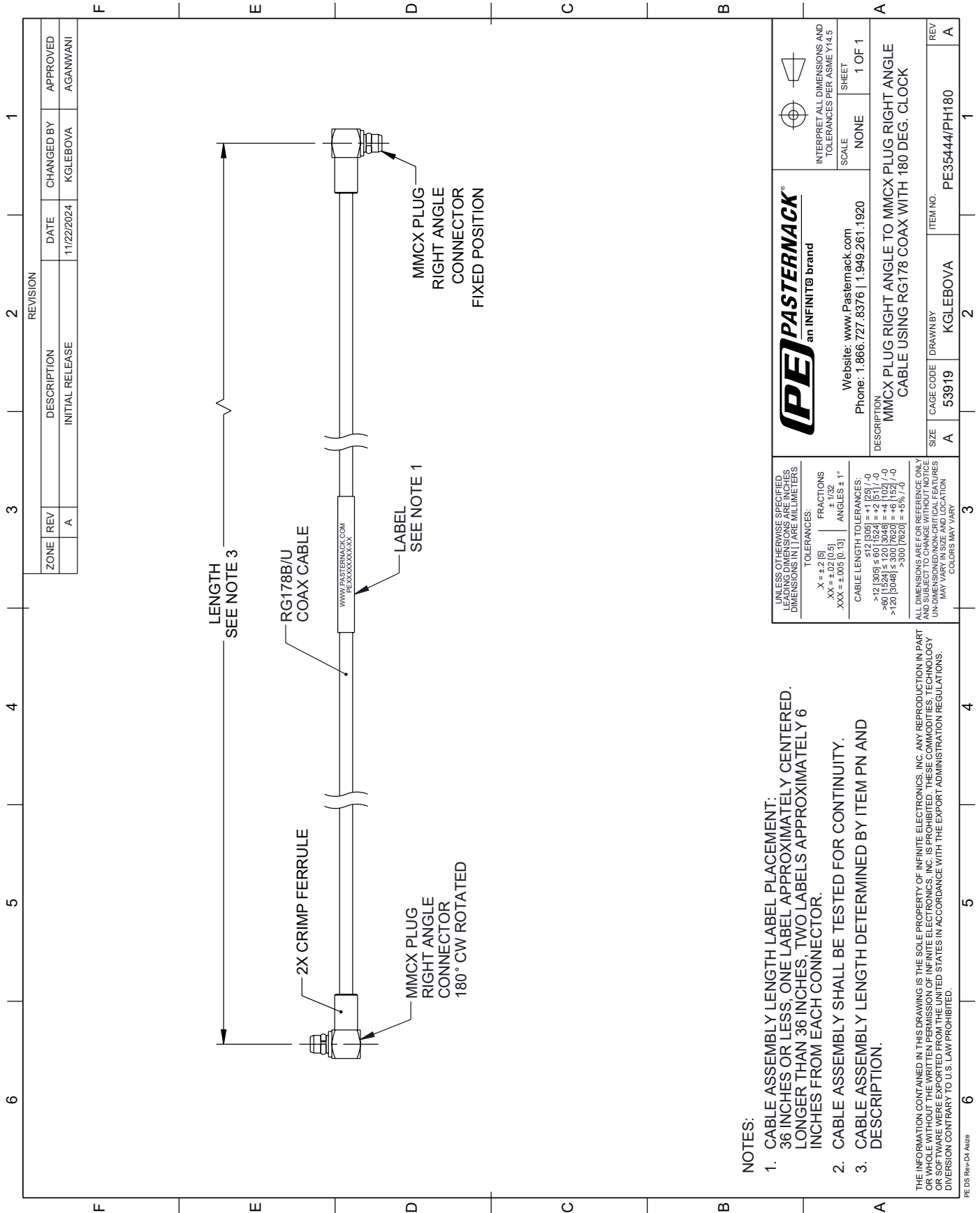
Click the following link (or enter part number in "SEARCH" on website) to obtain additional part information including price, inventory and certifications: [MMCX Plug Right Angle to MMCX Plug Right Angle Cable Using RG178 Coax with 180 Deg. Clock PE35444/PH180](#)

URL: <https://www.pasternack.com/mmcx-plug-right-angle-to-mmcx-plug-cable-using-rg178-with-180-deg.-clock-pe35444-ph180-p.aspx>

The information contained within this document is accurate to the best of our knowledge and representative of the part described herein. It may be necessary to make modifications to the part and/or the documentation of the part in order to implement improvements. Pasternack Enterprises reserves the right to make such changes as required. Unless otherwise stated, all specifications are nominal. Pasternack Enterprises does not make any representation or warranty regarding the suitability of the part described herein for any particular purpose, and Pasternack Enterprises does not assume liability arising out of the use of any part or document.

# PE35444/PH180 CAD Drawing


MMCX Plug Right Angle to MMCX Plug Right Angle Cable Using RG178 Coax with 180 Deg. Clock



- NOTES:**
1. CABLE ASSEMBLY LENGTH LABEL PLACEMENT: 36 INCHES OR LESS, ONE LABEL APPROXIMATELY CENTERED. LONGER THAN 36 INCHES, TWO LABELS APPROXIMATELY 6 INCHES FROM EACH CONNECTOR.
  2. CABLE ASSEMBLY SHALL BE TESTED FOR CONTINUITY.
  3. CABLE ASSEMBLY LENGTH DETERMINED BY ITEM PN AND DESCRIPTION.

THE INFORMATION CONTAINED IN THIS DRAWING IS THE SOLE PROPERTY OF INFINITE ELECTRONICS, INC. ANY REPRODUCTION IN PART OR WHOLE WITHOUT THE WRITTEN PERMISSION OF INFINITE ELECTRONICS, INC. IS PROHIBITED. THESE COMMODITIES, TECHNOLOGY OR SOFTWARE WERE EXPORTED FROM THE UNITED STATES IN ACCORDANCE WITH THE EXPORT ADMINISTRATION REGULATIONS. DIVERSION CONTRARY TO U.S. LAW PROHIBITED.

PE DS Rev-04 A182z

 <b>PASTERNAK</b> an INFINIT <sup>®</sup> brand		Website: <a href="http://www.Pasternack.com">www.Pasternack.com</a> Phone: 1.866.727.8376   1.949.261.1920
UNLESS OTHERWISE SPECIFIED LEADING DIMENSIONS ARE INCHES DIMENSIONS IN PARENTHESIZED ARE MILLIMETERS TOLERANCES: .X = ±.2 [5] .XX = ±.02 [0.5] .XXX = ±.005 [0.13] FRACTIONS ± 1/32 ANGLES ± 1°		INTERPRET ALL DIMENSIONS AND TOLERANCES PER ASME Y14.5 SCALE NONE SHEET 1 OF 1
CABLE LENGTH TOLERANCES: >12 [305] ≤ 60 [1524] = +1 [25] / -0 >60 [1524] ≤ 120 [3048] = +4 [102] / -0 >120 [3048] ≤ 300 [7620] = +5 [127] / -0 >300 [7620] = +5 [127] / -0		DESCRIPTION <b>MMCX PLUG RIGHT ANGLE TO MMCX PLUG RIGHT ANGLE CABLE USING RG178 COAX WITH 180 DEG. CLOCK</b>
ALL DIMENSIONS ARE FOR REFERENCE ONLY UNLESS OTHERWISE SPECIFIED. DIMENSIONS ON CRITICAL FEATURES MAY VARY IN SIZE AND LOCATION. COLORS MAY VARY.	SIZE A CAGE CODE 53919 DRAWN BY KGLEBOVA ITEM NO. PE35444/PH180	REV A