

SMA Male to SMA Male Cable 12 Inch Length Using RG316 Coax, LF Solder



PE3573/LF-12

Configuration

- Connector 1: SMA Male
- Connector 2: SMA Male
- Cable Type: RG316
- Coax Flex Type: Flexible

Features

- Max Frequency 3 GHz
- FEP Jacket



Applications

- General Purpose
- Laboratory Use

Description

Pasternack's PE3573/LF-12 SMA male to SMA male 12 inch cable using RG316 coax is part of our full line of RF components available for same-day shipping. Pasternack's flexible RF cable assemblies are ideal for applications where tight bends and flexure are required. This Pasternack SMA to SMA cable assembly has a male to male gender configuration with 50 ohm flexible RG316 coax. The PE3573/LF-12 SMA male to SMA male cable assembly operates to 3 GHz.

Custom versions of most RF cable assemblies can be built and shipped same day. Custom cable assembly lengths can be obtained by specifying the desired length on the web site at time of order or by contacting a sales representative. Other available RF cable assembly value added services include connector orientation or clocking, heat shrink booting and custom labeling. RF testing can also be performed to document the electrical performance of your cable assembly.

Electrical Specifications

Description	Minimum	Typical	Maximum	Units
Frequency Range	DC		3	GHz
VSWR		1.4:1		
Capacitance		32 [104.99]		pF/ft [pF/m]
Operating Voltage (AC)			335	V _{rms}

Specifications by Frequency

SMA Male to SMA Male Cable 12 Inch Length Using RG316 Coax, LF Solder



PE3573/LF-12

Part Number	Length	Description	F1	F2	F3	F4	F5	Units	Weight (lbs)
			Frequency	100	250	500	1000	3000	
PE3573/LF	Custom Lengths Available	Insertion Loss (Typ.)	0.11	0.16	0.23	0.38	0.58	dB/ft	
			0.37	0.53	0.76	1.25	1.91	dB/m	
PE3573/LF-12	12 inch	Insertion Loss (Typ.)	0.31	0.36	0.43	0.58	0.78	dB	0.034
PE3573/LF-24	24 inch	Insertion Loss (Typ.)	0.42	0.52	0.66	0.96	1.36	dB	0.045
PE3573/LF-36	36 inch	Insertion Loss (Typ.)	0.53	0.68	0.89	1.34	1.94	dB	0.055
PE3573/LF-48	48 inch	Insertion Loss (Typ.)	0.64	0.84	1.12	1.72	2.52	dB	0.065
PE3573/LF-72	72 inch	Insertion Loss (Typ.)	0.86	1.16	1.58	2.48	3.68	dB	0.085

The insertion loss data for the base model does not include loss due to the connectors. Each length includes insertion loss due to the connectors.

Loss due to Connector 1: 0.1 dB
 Loss due to Connector 2: 0.1 dB
 Base Weight: 0.034 pounds
 Additional Weight per Inch: 0.00084 pounds

Mechanical Specifications

Cable Assembly

Length 12 in [304.8 mm]
 Width/Diameter 0.5 in [12.7 mm]
 Weight 0.034 lbs [15.42 g]

Cable

Cable Type RG316
 Impedance 50 Ohms
 Inner Conductor Type Stranded
 Inner Conductor Material and Plating Copper Clad Steel, Silver
 Dielectric Type PTFE
 Number of Shields 1
 Shield Layer 1 Silver Plated Copper Braid
 Jacket Material FEP, Tan
 Jacket Diameter 0.102 in [2.59 mm]

SMA Male to SMA Male Cable 12 Inch Length Using RG316 Coax, LF Solder



PE3573/LF-12

Connectors

Description	Connector 1	Connector 2
Type	SMA Male	SMA Male
Specification	MIL-STD-348A	MIL-STD-348A
Impedance	50 Ohms	50 Ohms
Configuration	Straight	Straight
Contact Material and Plating	Brass, Gold	Brass, Gold
Contact Plating Specification	30 µin minimum	30µin minimum
Dielectric Type	PTFE	PTFE
Body Material and Plating	Brass, Nickel	Brass, Nickel
Body Plating Specification	100 µin minimum	100 µin minimum
Coupling Nut Material and Plating	Brass, Nickel	Brass, Nickel
Coupling Nut Plating Specification	100 µin minimum	100 µin minimum
Hex Size	5/16 inch	5/16 inch
Torque	5 in-lbs 0.57 Nm	5 in-lbs 0.57 Nm

Environmental Specifications

Operating Range Temperature -55 to +165 deg C

Compliance Certifications (see [product page](#) for current document)

Plotted and Other Data

Notes:

SMA Male to SMA Male Cable 12 Inch Length Using RG316 Coax, LF Solder

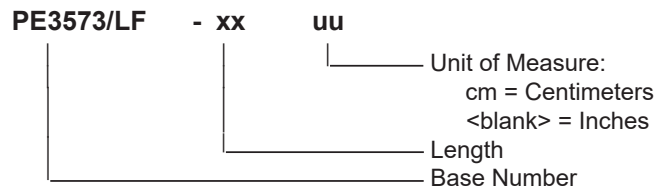


PE3573/LF-12

Typical Performance Data

How to Order

Part Number Configuration:



Example: PE3573/LF-12 = 12 inches long cable
PE3573/LF-100cm = 100 cm long cable

SMA Male to SMA Male Cable 12 Inch Length Using RG316 Coax, LF Solder from Pasternack Enterprises has same day shipment for domestic and International orders. Our RF, microwave and millimeter wave products maintain a 99.4% availability and are part of the broadest selection in the industry.

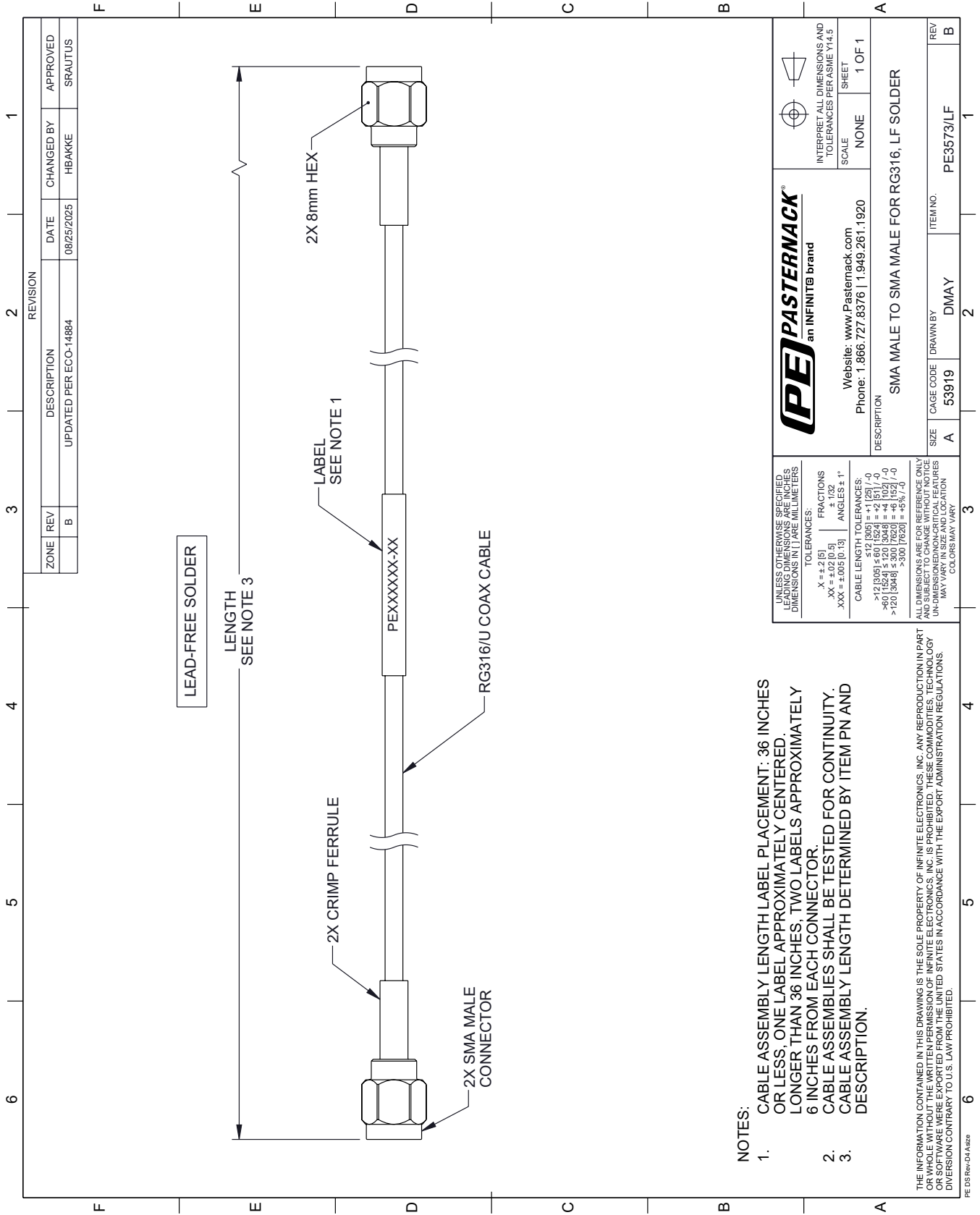
Click the following link (or enter part number in "SEARCH" on website) to obtain additional part information including price, inventory and certifications: [SMA Male to SMA Male Cable 12 Inch Length Using RG316 Coax, LF Solder PE3573/LF-12](#)

URL: <https://www.pasternack.com/sma-male-to-sma-male-cable-12-inch-length-using-rg316-lf-solder-pe3573-lf-12-p.aspx>

The information contained within this document is accurate to the best of our knowledge and representative of the part described herein. It may be necessary to make modifications to the part and/or the documentation of the part in order to implement improvements. Pasternack Enterprises reserves the right to make such changes as required. Unless otherwise stated, all specifications are nominal. Pasternack Enterprises does not make any representation or warranty regarding the suitability of the part described herein for any particular purpose, and Pasternack Enterprises does not assume liability arising out of the use of any part or document.

PE3573/LF-12 CAD Drawing

SMA Male to SMA Male Cable 12 Inch Length Using RG316 Coax, LF Solder



ZONE		REVISION		DATE		APPROVED	
B	B	DESCRIPTION	UPDATED PER ECO-14884	08/25/2025	HBAKKE	CHANGED BY	SRAUTUS

 PE PASTERNAK an INFINITE brand		INTERPRET ALL DIMENSIONS AND TOLERANCES PER ASME Y14.5 SCALE: NONE SHEET: 1 OF 1	
Website: www.Pasternack.com Phone: 1.866.727.8376 1.949.261.1920		DESCRIPTION: SMA MALE TO SMA MALE FOR RG316, LF SOLDER	
UNLESS OTHERWISE SPECIFIED, LEADING DIMENSIONS ARE INCHES, DIMENSIONS IN [] ARE MILLIMETERS.	TOLERANCES: .X = ±.2 [5] .XX = ±.02 [0.5] .XXX = ±.005 [0.13]	FRACTIONS: ±.1032 ANGLES ± 1°	CABLE LENGTH TOLERANCES: ≤12 [305] = +.1 [25] / -0 >.12 [3.05] ≤.60 [152.4] = +.2 [51] / -0 >.60 [152.4] ≤.300 [7620] = +.4 [101.6] / -0 >.300 [7620] = +.5% / -0
ALL DIMENSIONS ARE FOR REFERENCE ONLY AND SUBJECT TO CHANGE WITHOUT NOTICE. UN-DIMENSIONED NON-CRITICAL FEATURES MAY VARY IN SIZE AND LOCATION. CALCULATIONS MAY VARY.			
SIZE	CAGE CODE	DRAWN BY	ITEM NO.
A	53919	DMAY	PE3573/LF
REV	REV		REV
B	B		B

- NOTES:
- CABLE ASSEMBLY LENGTH LABEL PLACEMENT: .36 INCHES OR LESS, ONE LABEL APPROXIMATELY CENTERED. LONGER THAN .36 INCHES, TWO LABELS APPROXIMATELY .6 INCHES FROM EACH CONNECTOR.
 - CABLE ASSEMBLIES SHALL BE TESTED FOR CONTINUITY.
 - CABLE ASSEMBLY LENGTH DETERMINED BY ITEM PN AND DESCRIPTION.

THE INFORMATION CONTAINED IN THIS DRAWING IS THE SOLE PROPERTY OF INFINITE ELECTRONICS, INC. ANY REPRODUCTION IN PART OR IN WHOLE WITHOUT THE WRITTEN PERMISSION OF INFINITE ELECTRONICS, INC. IS PROHIBITED. THESE COMMODITIES, TECHNOLOGY OR SOFTWARE WERE EXPORTED FROM THE UNITED STATES IN ACCORDANCE WITH THE EXPORT ADMINISTRATION REGULATIONS. DIVERSION CONTRARY TO U.S. LAW PROHIBITED.