

SMA Male to Straight Cut Lead Cable Using 75 Ohm RG179 Coax



PE36292

Configuration

- Connector 1: SMA Male
- Connector 2: Straight Cut Lead
- Cable Type: RG179
- Coax Flex Type: Flexible

Features

- FEP Jacket

Applications

- General Purpose
- Laboratory Use

Description

Pasternack's PE36292 50 ohm SMA male to straight cut lead cable using 75 ohm RG179 coax is part of our full line of RF components available for same-day shipping. Pasternack's flexible RF cable assemblies are ideal for applications where tight bends and flexure are required.

Custom versions of most RF cable assemblies can be built and shipped same day. Custom cable assembly lengths can be obtained by specifying the desired length on the web site at time of order or by contacting a sales representative. Other available RF cable assembly value added services include connector orientation or clocking, heat shrink booting and custom labeling. RF testing can also be performed to document the electrical performance of your cable assembly.

Electrical Specifications

| Description | Minimum | Typical | Maximum | Units |
|-------------|---------|------------|---------|--------------|
| Capacitance | | 23 [75.46] | | pF/ft [pF/m] |

Mechanical Specifications

Cable Assembly

Weight 0.021 lbs [9.53 g]

Cable

Cable Type RG179
 Impedance 75 Ohms
 Inner Conductor Type Stranded
 Inner Conductor Material and Plating Copper Clad Steel, Silver
 Dielectric Type PTFE
 Number of Shields 1
 Shield Layer 1 Silver Plated Copper Braid
 Jacket Material FEP, Tan
 Jacket Diameter 0.1 in [2.54 mm]

SMA Male to Straight Cut Lead Cable Using 75 Ohm RG179 Coax



PE36292

Connectors

| Description | Connector 1 | Connector 2 |
|------------------------------------|------------------|-------------------|
| Type | SMA Male | Straight Cut Lead |
| Specification | MIL-STD-348A | |
| Impedance | 50 Ohms | 0 Ohms |
| Configuration | Straight | Straight |
| Contact Material and Plating | Brass, Gold | |
| Contact Plating Specification | 30 µin minimum | |
| Dielectric Type | PTFE | |
| Body Material and Plating | Brass, Nickel | |
| Body Plating Specification | 100 µin minimum | |
| Coupling Nut Material and Plating | Brass, Nickel | |
| Coupling Nut Plating Specification | 100 µin minimum | |
| Hex Size | 5/16 in | |
| Torque | 5 in-lbs 0.57 Nm | |

Environmental Specifications

Compliance Certifications (see [product page](#) for current document)

Plotted and Other Data

Notes:
Values at 25°C, sea level.

SMA Male to Straight Cut Lead Cable Using 75 Ohm RG179 Coax

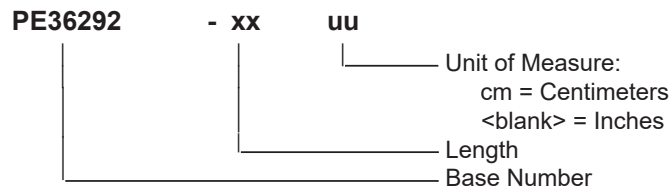


PE36292

Typical Performance Data

How to Order

Part Number Configuration:



Example: PE36292-12 = 12 inches long cable
PE36292-100cm = 100 cm long cable

SMA Male to Straight Cut Lead Cable Using 75 Ohm RG179 Coax from Pasternack Enterprises has same day shipment for domestic and International orders. Our RF, microwave and millimeter wave products maintain a 99.4% availability and are part of the broadest selection in the industry.

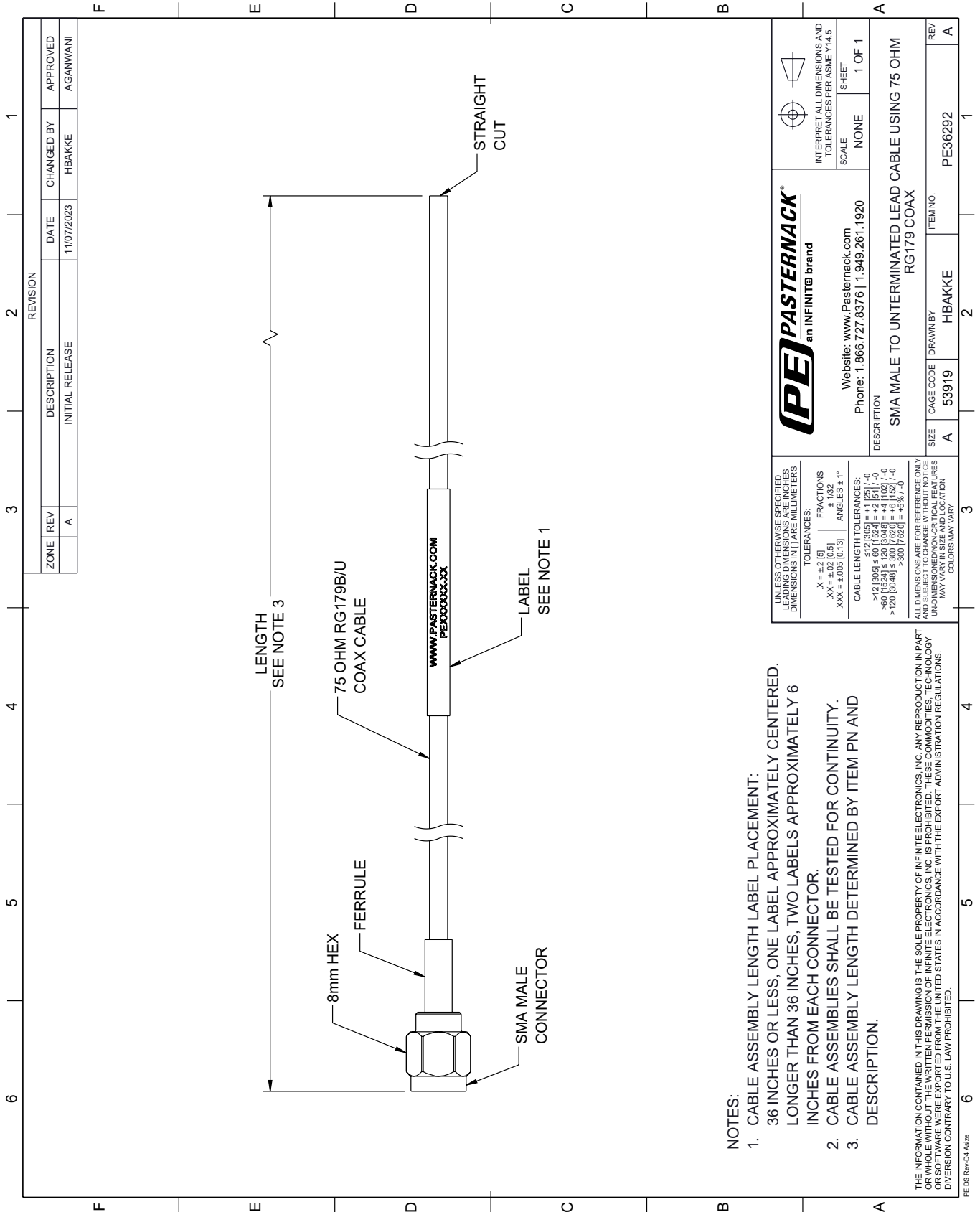
Click the following link (or enter part number in "SEARCH" on website) to obtain additional part information including price, inventory and certifications: [SMA Male to Straight Cut Lead Cable Using 75 Ohm RG179 Coax PE36292](#)

URL: <https://www.pasternack.com/sma-male-to-straight-cut-lead-cable-using-rg179-pe36292-p.aspx>

The information contained within this document is accurate to the best of our knowledge and representative of the part described herein. It may be necessary to make modifications to the part and/or the documentation of the part in order to implement improvements. Pasternack Enterprises reserves the right to make such changes as required. Unless otherwise stated, all specifications are nominal. Pasternack Enterprises does not make any representation or warranty regarding the suitability of the part described herein for any particular purpose, and Pasternack Enterprises does not assume liability arising out of the use of any part or document.

PE36292 CAD Drawing

SMA Male to Straight Cut Lead Cable Using 75 Ohm RG179 Coax



NOTES:

1. CABLE ASSEMBLY LENGTH LABEL PLACEMENT: 36 INCHES OR LESS, ONE LABEL APPROXIMATELY CENTERED. LONGER THAN 36 INCHES, TWO LABELS APPROXIMATELY 6 INCHES FROM EACH CONNECTOR.
2. CABLE ASSEMBLIES SHALL BE TESTED FOR CONTINUITY.
3. CABLE ASSEMBLY LENGTH DETERMINED BY ITEM PN AND DESCRIPTION.