



## MMCX Plug Right Angle to MCX Plug Cable Using RG316 Coax

### RF Cable Assemblies Technical Data Sheet

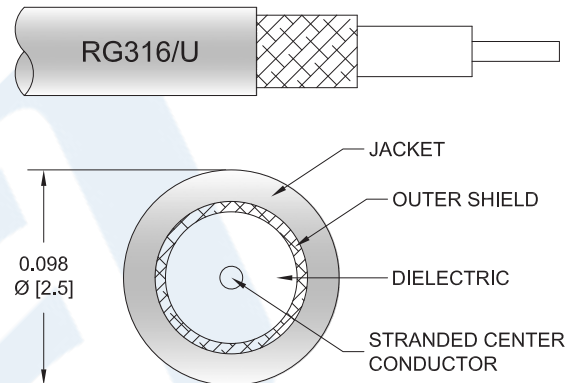
**PE36420**

#### Configuration

- Connector 1: MMCX Plug Right Angle
- Connector 2: MCX Plug
- Cable Type: RG316

#### Features

- Max Frequency 3 GHz
- FEP Jacket



#### Applications

- General Purpose
- Laboratory Use

#### Description

Pasternack's PE36420 MMCX plug right angle to MCX plug cable using RG316 coax is part of our full line of RF components available for same-day shipping. Pasternack's flexible RF cable assemblies are ideal for applications where tight bends and flexure are required. This Pasternack MMCX to MCX cable assembly has a plug to plug gender configuration with 50 ohm flexible RG316 coax. The PE36420 MMCX plug to MCX plug cable assembly operates to 3 GHz. The right angle MMCX interface on the RG316 cable allows for easier connections in tight spaces.

Custom versions of most RF cable assemblies can be built and shipped same day. Custom cable assembly lengths can be obtained by specifying the desired length on the web site at time of order or by contacting a sales representative. Other available RF cable assembly value added services include connector orientation or clocking, heat shrink booting and custom labeling. RF testing can also be performed to document the electrical performance of your cable assembly.

Click the following link (or enter part number in "SEARCH" on website) to obtain additional part information including price, inventory and certifications: [MMCX Plug Right Angle to MCX Plug Cable Using RG316 Coax PE36420](#)



## MMCX Plug Right Angle to MCX Plug Cable Using RG316 Coax

### RF Cable Assemblies Technical Data Sheet

**PE36420**

#### Electrical Specifications

Description	Minimum	Typical	Maximum	Units
Frequency Range	DC		3	GHz
VSWR			1.4:1	
Capacitance		32 [104.99]		pF/ft [pF/m]

#### Specifications by Frequency

Description	F1	F2	F3	F4	F5	Units
Frequency	0.1	0.25	0.5	1	3	GHz
Insertion Loss (Typ.)	0.11	0.16	0.238	0.38	0.58	dB/ft
	0.36	0.52	0.78	1.25	1.9	

#### Electrical Specification Notes:

Insertion Loss does not include the loss of the connectors. Insertion Loss is estimated as 0.1 dB for the straight connector and 0.2 dB for the right angle connector.

#### Mechanical Specifications

##### Cable Assembly

Weight 0.018 lbs [8.16 g]

##### Cable

Cable Type RG316  
 Impedance 50 Ohms  
 Inner Conductor Type Stranded  
 Inner Conductor Material and Plating Copper Clad Steel, Silver  
 Dielectric Type PTFE  
 Number of Shields 1  
 Shield Layer 1 Silver Plated Copper Braid  
 Jacket Material FEP, Tan  
 Jacket Diameter 0.102 in [2.59 mm]

Click the following link (or enter part number in "SEARCH" on website) to obtain additional part information including price, inventory and certifications: [MMCX Plug Right Angle to MCX Plug Cable Using RG316 Coax PE36420](#)



## MMCX Plug Right Angle to MCX Plug Cable Using RG316 Coax

### RF Cable Assemblies Technical Data Sheet

**PE36420**

#### Connectors

Description	Connector 1	Connector 2
Type	MMCX Plug Right Angle	MCX Plug
Specification	BS EN 122340	CECC 22220
Impedance	50 Ohms	50 Ohms
Contact Material and Plating	Brass, Gold	Brass, Gold
Contact Plating Specification	30μ in. minimum	30μ in. minimum
Dielectric Type	PTFE	PTFE
Body Material and Plating	Brass, Gold	Brass, Nickel
Body Plating Specification	3μ in. minimum	100μ in. minimum

**Compliance Certifications** (see [product page](#) for current document)

#### Plotted and Other Data

Notes:

Click the following link (or enter part number in "SEARCH" on website) to obtain additional part information including price, inventory and certifications: [MMCX Plug Right Angle to MCX Plug Cable Using RG316 Coax PE36420](#)



## MMCX Plug Right Angle to MCX Plug Cable Using RG316 Coax

### RF Cable Assemblies Technical Data Sheet

**PE36420**

#### How to Order

Part Number Configuration:

**PE36420**

- **xx**

**uu**

Unit of Measure:  
cm = Centimeters  
<blank> = Inches  
Length  
Base Number

Example: PE36420-12 = 12 inches long cable  
PE36420-100cm = 100 cm long cable

MMCX Plug Right Angle to MCX Plug Cable Using RG316 Coax from Pasternack Enterprises has same day shipment for domestic and International orders. Our RF, microwave and millimeter wave products maintain a 99.4% availability and are part of the broadest selection in the industry.

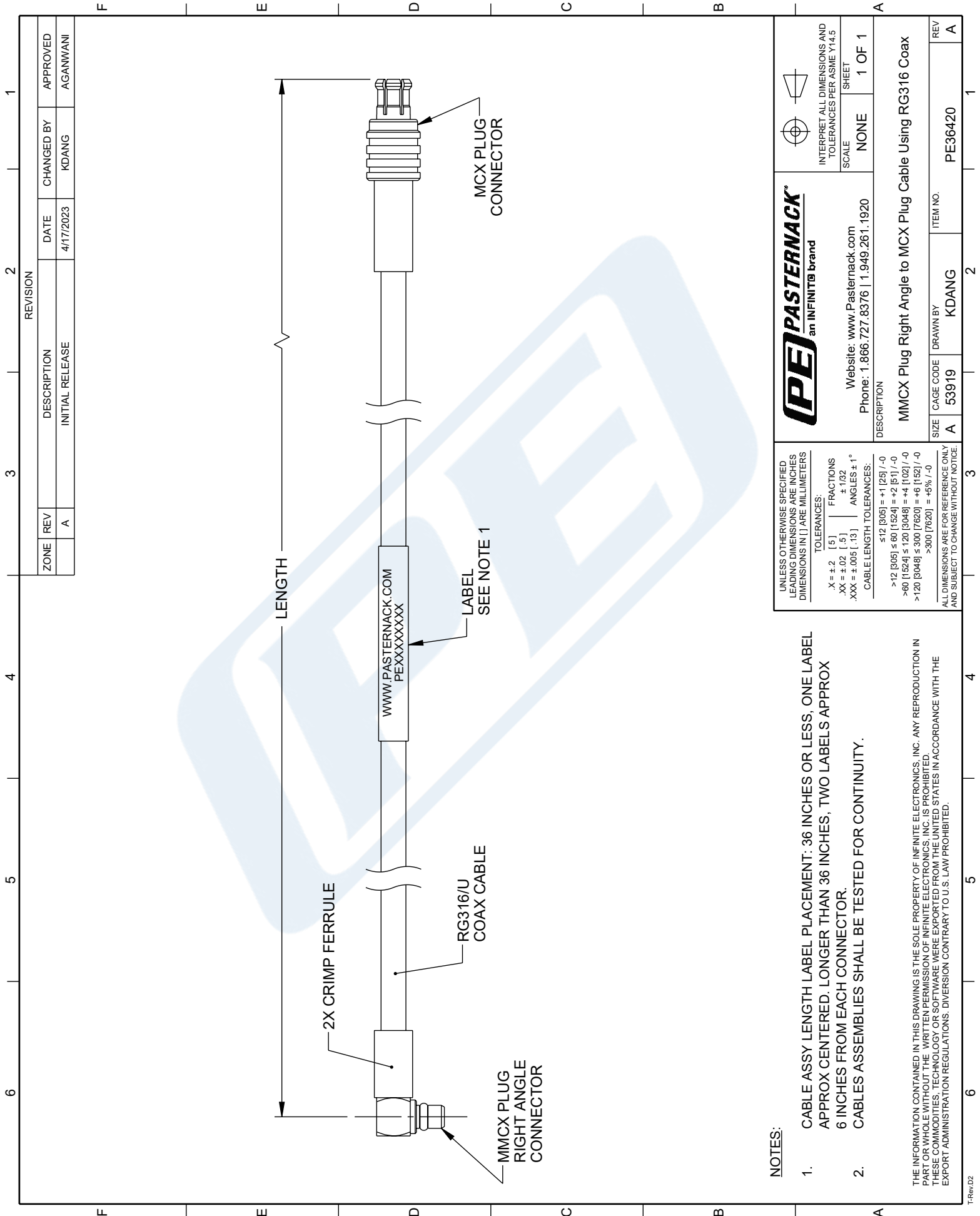
Click the following link (or enter part number in "SEARCH" on website) to obtain additional part information including price, inventory and certifications: [MMCX Plug Right Angle to MCX Plug Cable Using RG316 Coax PE36420](https://www.pasternack.com/mmcx-plug-right-angle-to-mcx-plug-cable-using-rg316-pe36420-p.aspx)

URL: <https://www.pasternack.com/mmcx-plug-right-angle-to-mcx-plug-cable-using-rg316-pe36420-p.aspx>

The information contained in this document is accurate to the best of our knowledge and representative of the part described herein. It may be necessary to make modifications to the part and/or the documentation of the part, in order to implement improvements. Pasternack reserves the right to make such changes as required. Unless otherwise stated, all specifications are nominal. Pasternack does not make any representation or warranty regarding the suitability of the part described herein for any particular purpose, and Pasternack does not assume any liability arising out of the use of any part or documentation.

# PE36420 CAD Drawing

MMCX Plug Right Angle to MCX Plug Cable Using RG316 Coax



ZONE	REV	DESCRIPTION	DATE	CHANGED BY	APPROVED
	A	INITIAL RELEASE	4/17/2023	KDANG	AGANWANI

<p><b>PASTERNAK</b> an INFINIT® brand</p> <p>Website: <a href="http://www.Pasternack.com">www.Pasternack.com</a> Phone: 1.866.727.8376   1.949.261.1920</p>		<p>INTERPRET ALL DIMENSIONS AND TOLERANCES PER ASME Y14.5</p> <p>SCALE: NONE</p> <p>SHEET: 1 OF 1</p>
<p>DESCRIPTION: MMCX Plug Right Angle to MCX Plug Cable Using RG316 Coax</p>		
SIZE: A	CAGE CODE: 53919	ITEM NO.: PE36420
<p>UNLESS OTHERWISE SPECIFIED LEADING DIMENSIONS ARE INCHES DIMENSIONS IN [ ] ARE MILLIMETERS</p> <p>TOLERANCES:          .X = ±.2 [ .5 ] FRACTIONS ±.1032          .XX = ±.02 [ .5 ] ±.1032          .XXX = ±.005 [ .13 ] ANGLES ± 1°          CABLE LENGTH TOLERANCES:          ≤12 [305] = +1 [25] / -0          &gt;12 [305] ≤ 60 [1524] = +2 [51] / -0          &gt;60 [1524] ≤ 120 [3048] = +4 [102] / -0          &gt;120 [3048] ≤ 300 [7620] = +6 [152] / -0          &gt;300 [7620] = +5% / -0</p> <p>ALL DIMENSIONS ARE FOR REFERENCE ONLY AND SUBJECT TO CHANGE WITHOUT NOTICE.</p>		

**NOTES:**

- CABLE ASSY LENGTH LABEL PLACEMENT: 36 INCHES OR LESS, ONE LABEL APPROX CENTERED. LONGER THAN 36 INCHES, TWO LABELS APPROX 6 INCHES FROM EACH CONNECTOR.
- CABLES ASSEMBLIES SHALL BE TESTED FOR CONTINUITY.

THE INFORMATION CONTAINED IN THIS DRAWING IS THE SOLE PROPERTY OF INFINITE ELECTRONICS, INC. ANY REPRODUCTION IN PART OR WHOLE WITHOUT THE WRITTEN PERMISSION OF INFINITE ELECTRONICS, INC. IS PROHIBITED. THESE COMMODITIES, TECHNOLOGY OR SOFTWARE WERE EXPORTED FROM THE UNITED STATES IN ACCORDANCE WITH THE EXPORT ADMINISTRATION REGULATIONS. DIVERSION CONTRARY TO U.S. LAW PROHIBITED.