

## 75 Ohm MCX Plug to 75 Ohm BNC Female Bulkhead Cable Using 75 Ohm RG179 Coax

### PE37057



#### Configuration

- Connector 1: MCX Plug
- Connector 2: BNC Female Bulkhead
- Cable Type: RG179
- Coax Flex Type: Flexible

#### Features

- Max Frequency 1 GHz
- FEP Jacket

#### Applications

- General Purpose
- Laboratory Use

#### Description

Pasternack's PE37057 75 ohm MCX plug to 75 ohm BNC female bulkhead cable using 75 ohm RG179 coax is part of our full line of RF components available for same-day shipping. Pasternack's flexible RF cable assemblies are ideal for applications where tight bends and flexure are required. This Pasternack MCX to BNC cable assembly has a plug to female gender configuration with 75 ohm flexible RG179 coax. The PE37057 MCX plug to BNC female cable assembly operates to 1 GHz. Our RF cable assembly with BNC bulkhead interface allows designers to create external connections on their product enclosures, and can be used in a variety of other rack mount and panel mount applications.

Custom versions of most RF cable assemblies can be built and shipped same day. Custom cable assembly lengths can be obtained by specifying the desired length on the web site at time of order or by contacting a sales representative. Other available RF cable assembly value added services include connector orientation or clocking, heat shrink booting and custom labeling. RF testing can also be performed to document the electrical performance of your cable assembly.

#### Electrical Specifications

Description	Minimum	Typical	Maximum	Units
Frequency Range	DC		1,000	MHz
VSWR			1.4:1	
Capacitance		23 [75.46]		pF/ft [pF/m]
Operating Voltage (AC)			250	Vrms

#### Specifications by Frequency

## 75 Ohm MCX Plug to 75 Ohm BNC Female Bulkhead Cable Using 75 Ohm RG179 Coax

### PE37057



Part Number	Length	Description	F1	F2	F3	F4	Units	Weight (lbs)
		Frequency	100	250	500	1000	MHz	
PE37057	Custom Lengths Available	Insertion Loss (Typ.)	0.09	0.14	0.203	0.3	dB/ft	
			0.3	0.45	0.67	0.99	dB/m	
PE37057-12	12 inch	Insertion Loss (Typ.)	0.29	0.34	0.41	0.5	dB	0.059
PE37057-24	24 inch	Insertion Loss (Typ.)	0.38	0.48	0.61	0.8	dB	0.068
PE37057-36	36 inch	Insertion Loss (Typ.)	0.47	0.62	0.81	1.1	dB	0.077
PE37057-48	48 inch	Insertion Loss (Typ.)	0.56	0.75	1.02	1.4	dB	0.086
PE37057-72	72 inch	Insertion Loss (Typ.)	0.74	1.03	1.42	2	dB	0.104

The insertion loss data for the base model does not include loss due to the connectors. Each length includes insertion loss due to the connectors.

Loss due to Connector 1: 0.1 dB  
 Loss due to Connector 2: 0.1 dB  
 Base Weight: 0.059 pounds  
 Additional Weight per Inch: 0.00075 pounds

### Mechanical Specifications

#### Cable Assembly

Weight 0.059 lbs [26.76 g]

#### Cable

Cable Type RG179  
 Impedance 75 Ohms  
 Inner Conductor Type Stranded  
 Inner Conductor Material and Plating Copper Clad Steel, Silver  
 Dielectric Type PTFE  
 Number of Shields 1  
 Shield Layer 1 Silver Plated Copper Braid  
 Jacket Material FEP, Tan  
 Jacket Diameter 0.1 in [2.54 mm]

### Connectors

Description	Connector 1	Connector 2
Type	MCX Plug	BNC Female Bulkhead
Impedance	75 Ohms	75 Ohms
Configuration	Straight	Straight
Contact Material and Plating	Brass, Gold	Brass, Gold
Contact Plating Specification	30 µin minimum	30 µin minimum
Dielectric Type	PTFE	PTFE
Body Material and Plating	Brass, Gold	Brass, Nickel
Body Plating Specification	3 µin minimum	100 µin minimum

## 75 Ohm MCX Plug to 75 Ohm BNC Female Bulkhead Cable Using 75 Ohm RG179 Coax



### PE37057

#### Environmental Specifications

Operating Range Temperature

-55 to +155 deg C

**Compliance Certifications** (see [product page](#) for current document)

#### Plotted and Other Data

Notes:

Values at 25°C, sea level.

#### Typical Performance Data

#### How to Order

Part Number Configuration:

**PE37057**

**- xx**

**uu**

Unit of Measure:  
cm = Centimeters  
<blank> = Inches  
Length  
Base Number

Example: PE37057-12 = 12 inches long cable  
PE37057-100cm = 100 cm long cable

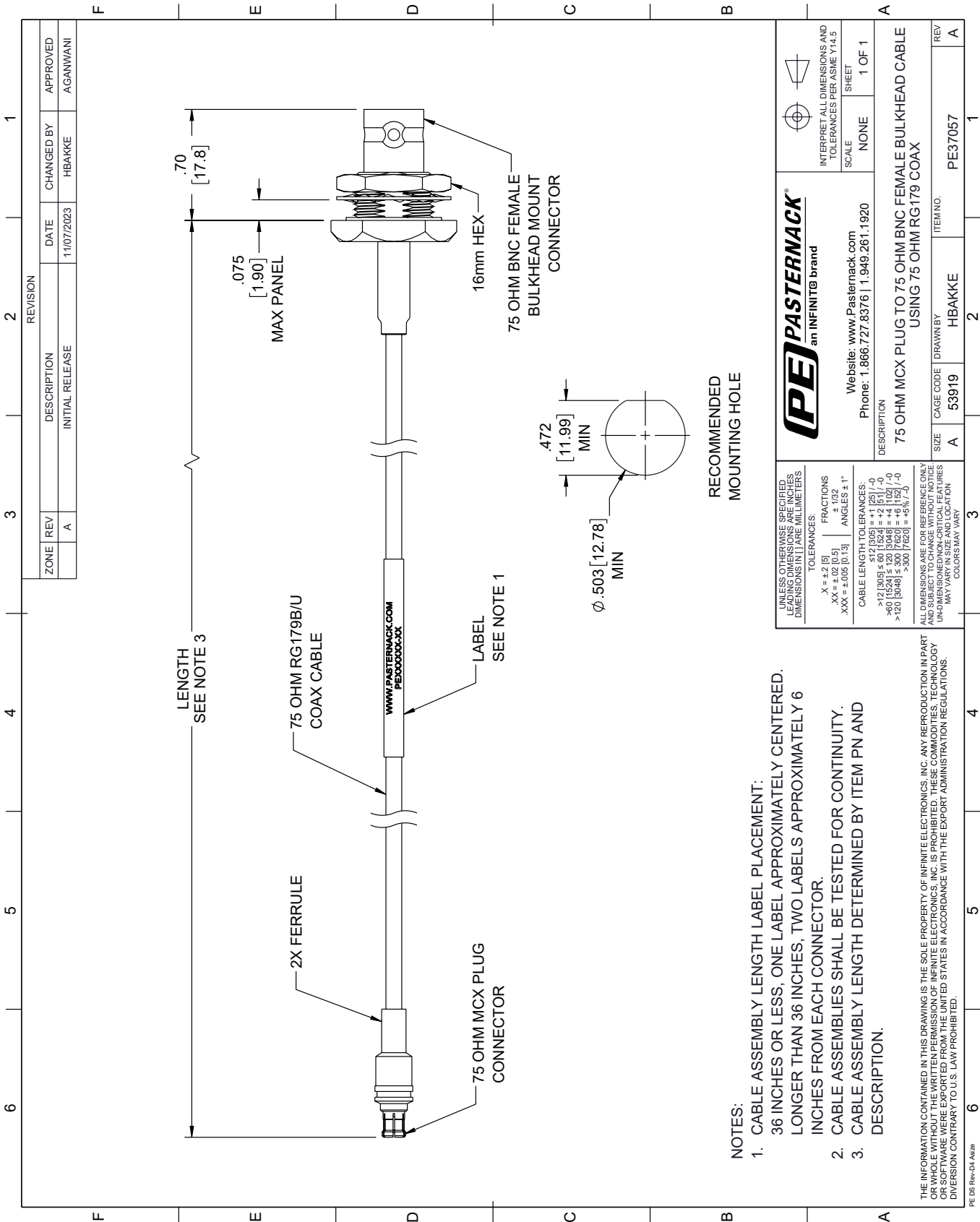
75 Ohm MCX Plug to 75 Ohm BNC Female Bulkhead Cable Using 75 Ohm RG179 Coax from Pasternack Enterprises has same day shipment for domestic and International orders. Our RF, microwave and millimeter wave products maintain a 99.4% availability and are part of the broadest selection in the industry.

Click the following link (or enter part number in "SEARCH" on website) to obtain additional part information including price, inventory and certifications: [75 Ohm MCX Plug to 75 Ohm BNC Female Bulkhead Cable Using 75 Ohm RG179 Coax PE37057](#)






URL: <https://www.pasternack.com/75-ohm-mcx-plug-to-75-ohm-bnc-female-bulkhead-cable-using-rg179-pe37057-p.aspx>

The information contained within this document is accurate to the best of our knowledge and representative of the part described herein. It may be necessary to make modifications to the part and/or the documentation of the part in order to implement improvements. Pasternack Enterprises reserves the right to make such changes as required. Unless otherwise stated, all specifications are nominal. Pasternack Enterprises does not make any representation or warranty regarding the suitability of the part described herein for any particular purpose, and Pasternack Enterprises does not assume liability arising out of the use of any part or document.

PE37057 CAD Drawing
75 Ohm MCX Plug to 75 Ohm BNC Female Bulkhead Cable Using 75 Ohm RG179 Coax



- NOTES:
- 1. CABLE ASSEMBLY LENGTH LABEL PLACEMENT: 36 INCHES OR LESS, ONE LABEL APPROXIMATELY CENTERED. LONGER THAN 36 INCHES, TWO LABELS APPROXIMATELY 6 INCHES FROM EACH CONNECTOR.
  - 2. CABLE ASSEMBLIES SHALL BE TESTED FOR CONTINUITY.
  - 3. CABLE ASSEMBLY LENGTH DETERMINED BY ITEM PN AND DESCRIPTION.

<div>UNLESS OTHERWISE SPECIFIED LEADING DIMENSIONS ARE INCHES DIMENSIONS IN [ ] ARE MILLIMETERS</div>		<div>TOLERANCES:</div> <div>X = ±.02 [5] XX = ±.02 [0.5] XXX = ±.005 [0.13]</div>		<div>FRACTIONS</div> <div>± 1/32 ANGLES ± 1°</div>		<div></div> <div>INTERPRET ALL DIMENSIONS AND TOLERANCES PER ASME Y14.5</div>		<div></div>					
<div><div><b>PASTERNAK®</b></div><div>an INFINIT® brand</div></div>						<div>Website: <a href="http://www.Pasternack.com">www.Pasternack.com</a></div> <div>Phone: 1.866.727.8376   1.949.281.1920</div>				<div>SCALE</div> <div>NONE</div>		<div>SHEET</div> <div>1 OF 1</div>	
<div>DESCRIPTION</div> <div>75 OHM MCX PLUG TO 75 OHM BNC FEMALE BULKHEAD CABLE USING 75 OHM RG179 COAX</div>						<div>ITEM NO.</div> <div>PE37057</div>		<div>REV</div> <div>A</div>					
<div>SIZE</div> <div>A</div>		<div>CAGE CODE</div> <div>53919</div>		<div>DRAWN BY</div> <div>HBAKKE</div>		<div>ITEM NO.</div> <div>PE37057</div>		<div>REV</div> <div>A</div>					