

SMA Male Right Angle to MCX Plug Cable Using RG316-DS Coax

PE37372

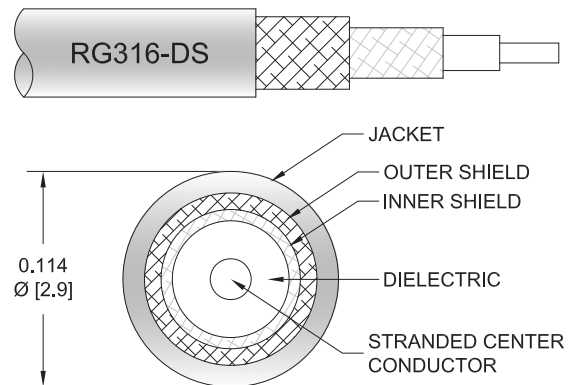


Configuration

- Connector 1: SMA Male Right Angle
- Connector 2: MCX Plug
- Cable Type: RG316-DS
- Coax Flex Type: Flexible

Features

- 70% Phase Velocity
- Double Shielded
- FEP Jacket



Applications

- General Purpose
- Laboratory Use

Description

Pasternack's PE37372 SMA male right angle to MCX plug cable using RG316-DS coax is part of our full line of RF components available for same-day shipping. Pasternack's flexible RF cable assemblies are ideal for applications where tight bends and flexure are required. This Pasternack SMA to MCX cable assembly has a male to plug gender configuration with 50 ohm flexible RG316-DS coax. The right angle SMA interface on the RG316-DS cable allows for easier connections in tight spaces. The double shielding of this Pasternack cable assembly provides excellent shielding effectiveness.

Custom versions of most RF cable assemblies can be built and shipped same day. Custom cable assembly lengths can be obtained by specifying the desired length on the web site at time of order or by contacting a sales representative. Other available RF cable assembly value added services include connector orientation or clocking, heat shrink booting and custom labeling. RF testing can also be performed to document the electrical performance of your cable assembly.

Electrical Specifications

Description	Minimum	Typical	Maximum	Units
Velocity of Propagation		70		%
Capacitance		29.4 [96.46]		pF/ft [pF/m]
Operating Voltage (AC)			250	Vrms

Mechanical Specifications

Cable Assembly

Weight 0.037 lbs [16.78 g]

Cable

Cable Type RG316-DS
Impedance 50 Ohms
Inner Conductor Type Stranded

SMA Male Right Angle to MCX Plug Cable Using RG316-DS Coax



PE37372

Inner Conductor Material and Plating	Copper Clad Steel, Silver
Dielectric Type	PTFE
Number of Shields	2
Shield Layer 1	Silver Plated Copper Braid
Shield Layer 2	Silver Plated Copper Braid
Jacket Material	FEP, Tan
Jacket Diameter	0.114 in [2.9 mm]
One Time Minimum Bend Radius	0.59 in [14.99 mm]

Connectors

Description	Connector 1	Connector 2
Type	SMA Male Right Angle	MCX Plug
Specification	MIL-STD-348A	
Impedance	50 Ohms	50 Ohms
Configuration	Right Angle	Straight
Contact Material and Plating	Brass, Gold	
Contact Plating Specification	50 µin minimum	
Dielectric Type	PTFE	
Body Material and Plating	Brass, Nickel	Brass, Nickel
Body Plating Specification	100 µin minimum	
Coupling Nut Material and Plating	Brass, Nickel	
Coupling Nut Plating Specification	100 µin minimum	
Hex Size	5/16 in	
Torque	5 in-lbs 0.57 Nm	

Environmental Specifications

Compliance Certifications (see [product page](#) for current document)

Plotted and Other Data

Notes:

SMA Male Right Angle to MCX Plug Cable Using RG316-DS Coax



PE37372

Typical Performance Data

How to Order

Part Number Configuration:

PE37372

- xx

uu

Unit of Measure:

cm = Centimeters

<blank> = Inches

Length

Base Number

Example: PE37372-12 = 12 inches long cable
PE37372-100cm = 100 cm long cable

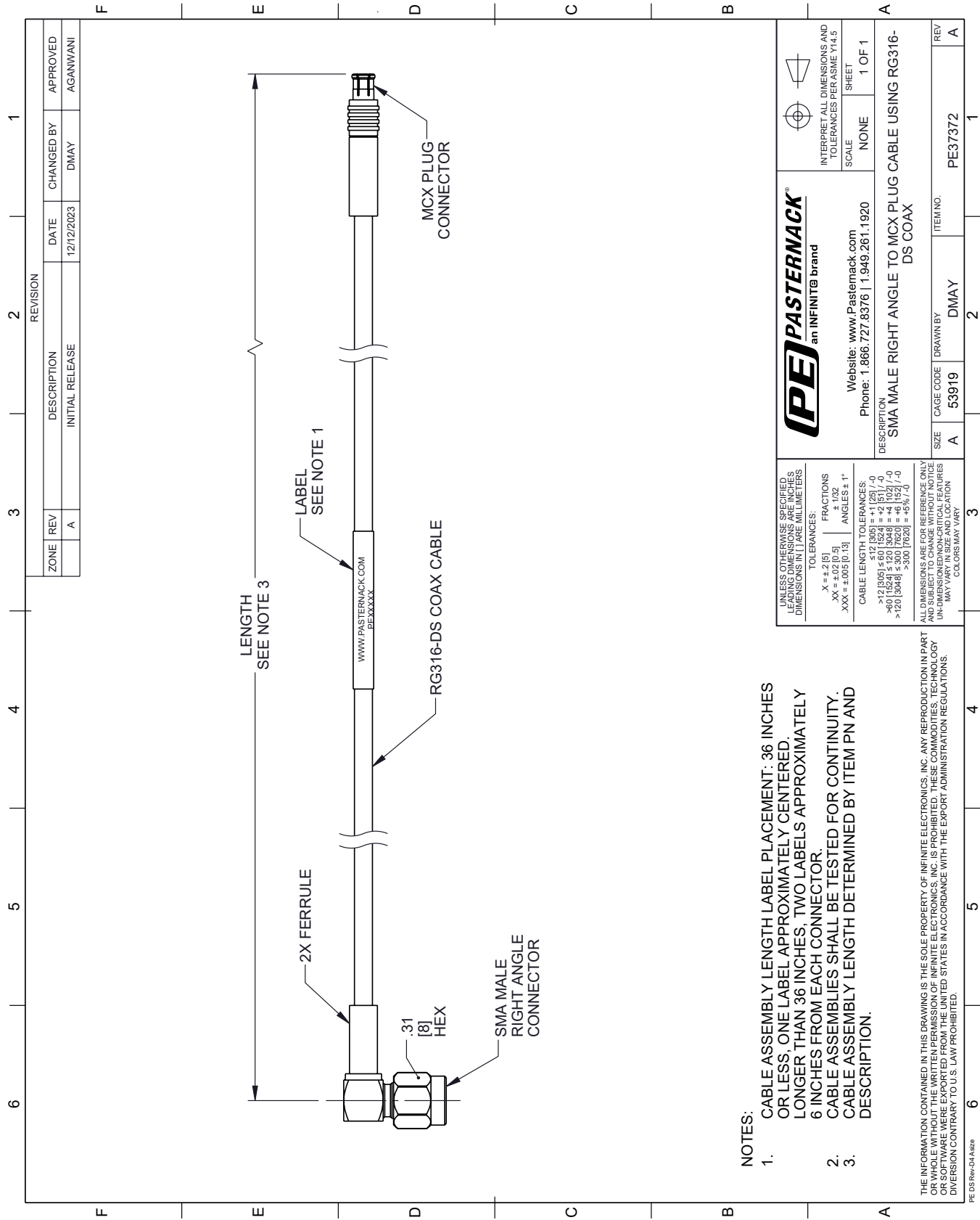
SMA Male Right Angle to MCX Plug Cable Using RG316-DS Coax from Pasternack Enterprises has same day shipment for domestic and International orders. Our RF, microwave and millimeter wave products maintain a 99.4% availability and are part of the broadest selection in the industry.

Click the following link (or enter part number in "SEARCH" on website) to obtain additional part information including price, inventory and certifications: [SMA Male Right Angle to MCX Plug Cable Using RG316-DS Coax PE37372](https://www.pasternack.com/sma-male-right-angle-to-mcx-plug-cable-using-rg316-ds-pe37372-p.aspx)

URL: <https://www.pasternack.com/sma-male-right-angle-to-mcx-plug-cable-using-rg316-ds-pe37372-p.aspx>

The information contained within this document is accurate to the best of our knowledge and representative of the part described herein. It may be necessary to make modifications to the part and/or the documentation of the part in order to implement improvements. Pasternack Enterprises reserves the right to make such changes as required. Unless otherwise stated, all specifications are nominal. Pasternack Enterprises does not make any representation or warranty regarding the suitability of the part described herein for any particular purpose, and Pasternack Enterprises does not assume liability arising out of the use of any part or document.

PE37372 CAD Drawing
SMA Male Right Angle to MCX Plug Cable Using RG316-DS Coax



- 1. CABLE ASSEMBLY LENGTH LABEL PLACEMENT: 36 INCHES OR LESS, ONE LABEL APPROXIMATELY CENTERED. LONGER THAN 36 INCHES, TWO LABELS APPROXIMATELY 6 INCHES FROM EACH CONNECTOR.
- 2. CABLE ASSEMBLIES SHALL BE TESTED FOR CONTINUITY.
- 3. CABLE ASSEMBLY LENGTH DETERMINED BY ITEM PN AND DESCRIPTION.

UNLESS OTHERWISE SPECIFIED LEADING DIMENSIONS ARE INCHES DIMENSIONS IN [] ARE MILLIMETERS		PE PASTERNAK® an INFINITI® brand		INTERPRET ALL DIMENSIONS AND TOLERANCES PER ASME Y14.5	
TOLERANCES: X = ±.2 [5] XX = ±.02 [0.5] XXX = ±.005 [0.13]		FRACTIONS ± 1/32 ANGLES ± 1°		SCALE NONE	
CABLE LENGTH TOLERANCES: ≤ 12 [305] = +.1 [25] / -0 > 12 [305] ≤ 60 [1524] = +.2 [51] / -0 > 60 [1524] ≤ 120 [3048] = +.3 [76] / -0 > 120 [3048] ≤ 300 [7620] = +.5 [127] / -0 > 300 [7620] = +.5% / -0		Website: www.Pasternack.com Phone: 1.866.727.8376 1.949.261.1920		SHEET 1 OF 1	
ALL DIMENSIONS ARE FOR REFERENCE ONLY AND SUBJECT TO CHANGE WITHOUT NOTICE UNLESS OTHERWISE SPECIFIED, DIMENSIONS MAY VARY IN SIZE AND LOCATION COLORS MAY VARY		DESCRIPTION SMA MALE RIGHT ANGLE TO MCX PLUG CABLE USING RG316-DS COAX		ITEM NO. PE37372	
SIZE A		CAGE CODE 53919		DRAWN BY DMAY	
REV A		ITEM NO. PE37372		REV A	