

TNC Male to SMC Plug Cable Using RG316 Coax

PE37393

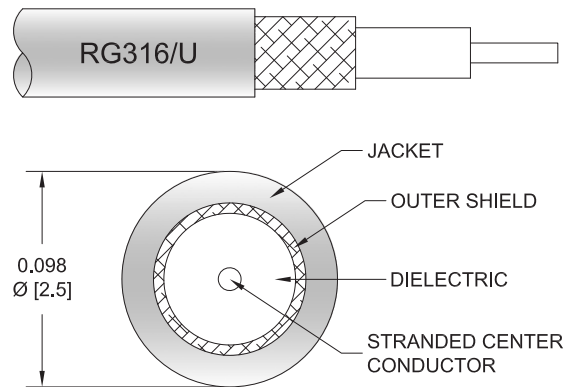


Configuration

- Connector 1: TNC Male
- Connector 2: SMC Plug
- Cable Type: RG316
- Coax Flex Type: Flexible

Features

- Max Frequency 3 GHz
- FEP Jacket



Applications

- General Purpose
- Laboratory Use

Description

Pasternack's PE37393 TNC male to SMC plug cable using RG316 coax is part of our full line of RF components available for same-day shipping. Pasternack's flexible RF cable assemblies are ideal for applications where tight bends and flexure are required. This Pasternack TNC to SMC cable assembly has a male to plug gender configuration with 50 ohm flexible RG316 coax. The PE37393 TNC male to SMC plug cable assembly operates to 3 GHz.

Custom versions of most RF cable assemblies can be built and shipped same day. Custom cable assembly lengths can be obtained by specifying the desired length on the web site at time of order or by contacting a sales representative. Other available RF cable assembly value added services include connector orientation or clocking, heat shrink booting and custom labeling. RF testing can also be performed to document the electrical performance of your cable assembly.

Electrical Specifications

Description	Minimum	Typical	Maximum	Units
Frequency Range	DC		3	GHz
VSWR			1.4:1	
Capacitance		32 [104.99]		pF/ft [pF/m]

Specifications by Frequency

TNC Male to SMC Plug Cable Using RG316 Coax



PE37393

Part Number	Length	Description	F1	F2	F3	F4	F5	Units	Weight (lbs)
		Frequency	100	250	500	1000	3000	MHz	
PE37393	Custom Lengths Available	Insertion Loss (Typ.)	0.11	0.16	0.24	0.38	0.58	dB/ft	
			0.37	0.53	0.79	1.25	1.91	dB/m	
PE37393-12	12 inch	Insertion Loss (Typ.)	0.46	0.51	0.59	0.73	0.93	dB	0.056
PE37393-24	24 inch	Insertion Loss (Typ.)	0.57	0.67	0.83	1.11	1.51	dB	0.067
PE37393-36	36 inch	Insertion Loss (Typ.)	0.68	0.83	1.07	1.49	2.09	dB	0.077
PE37393-48	48 inch	Insertion Loss (Typ.)	0.79	0.99	1.31	1.87	2.67	dB	0.087
PE37393-72	72 inch	Insertion Loss (Typ.)	1.01	1.31	1.78	2.63	3.83	dB	0.107

The insertion loss data for the base model does not include loss due to the connectors. Each length includes insertion loss due to the connectors.

Loss due to Connector 1:	0.25 dB
Loss due to Connector 2:	0.1 dB
Base Weight:	0.056 pounds
Additional Weight per Inch:	0.00084 pounds

Mechanical Specifications

Cable Assembly

Width/Diameter	0.5 in [12.7 mm]
Weight	0.056 lbs [25.4 g]

Cable

Cable Type	RG316
Impedance	50 Ohms
Inner Conductor Type	Stranded
Inner Conductor Material and Plating	Copper Clad Steel, Silver
Dielectric Type	PTFE
Number of Shields	1
Shield Layer 1	Silver Plated Copper Braid
Jacket Material	FEP, Tan
Jacket Diameter	0.098 in [2.49 mm]

TNC Male to SMC Plug Cable Using RG316 Coax



PE37393

Connectors

Description	Connector 1	Connector 2
Type	TNC Male	SMC Plug
Specification	MIL-STD-348A	MIL-STD-348A
Impedance	50 Ohms	50 Ohms
Configuration	Straight	Straight
Contact Material and Plating	Brass, Gold	Beryllium Copper, Gold
Contact Plating Specification	30μ in. minimum	30μ in. minimum
Dielectric Type	Teflon	Teflon
Body Material and Plating	Brass, Nickel	Brass, Nickel
Body Plating Specification	100μ in. minimum	100μ in. minimum
Hex Size		1/4 in

Environmental Specifications

Operating Range Temperature -55 to +165 deg C

Compliance Certifications (see [product page](#) for current document)

Plotted and Other Data

Notes:

Values at 25°C, sea level.

TNC Male to SMC Plug Cable Using RG316 Coax



PE37393

Typical Performance Data

How to Order

Part Number Configuration:

PE37393

- xx

uu

Unit of Measure:
cm = Centimeters
<blank> = Inches

Length

Base Number

Example: PE37393-12 = 12 inches long cable
PE37393-100cm = 100 cm long cable

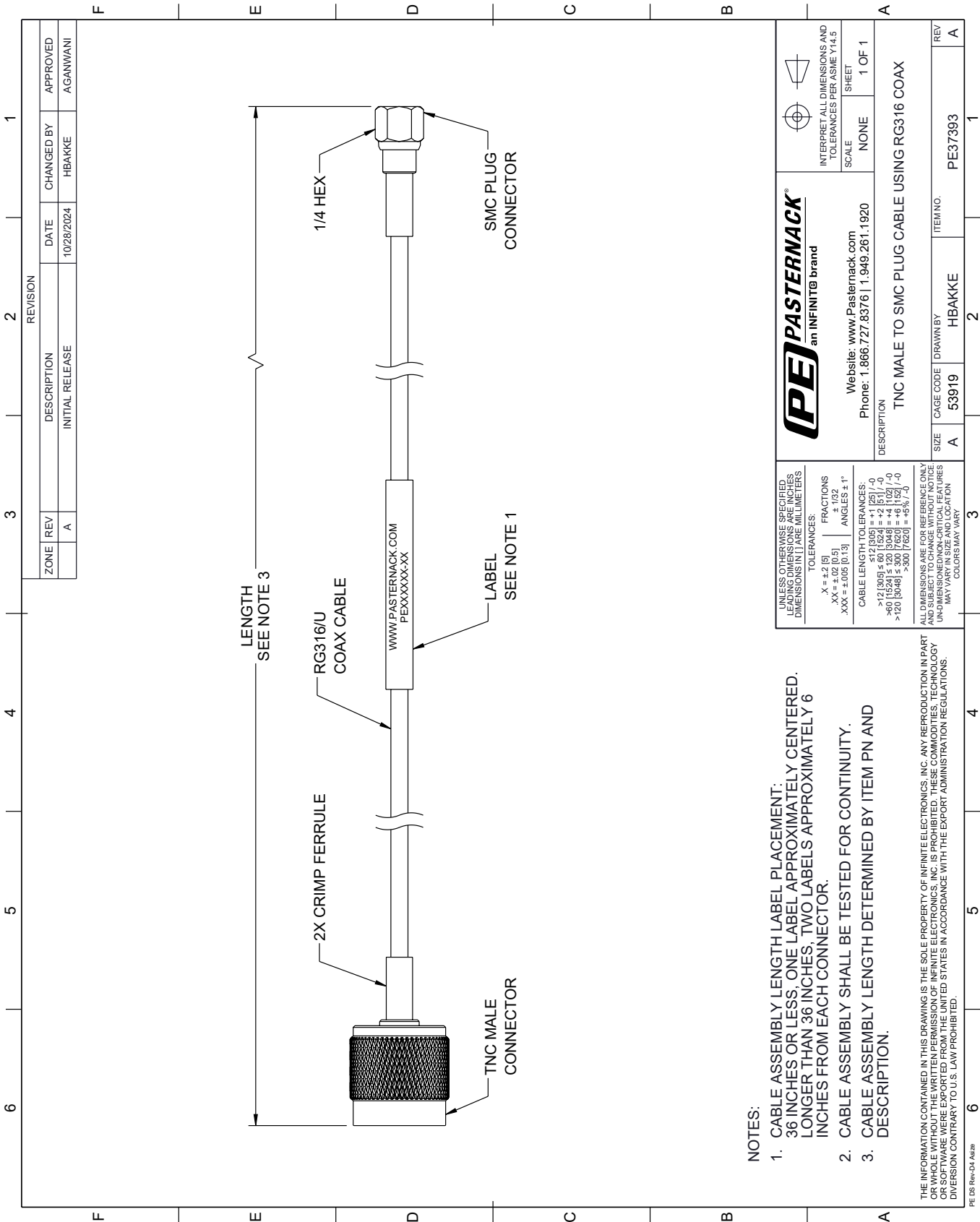
TNC Male to SMC Plug Cable Using RG316 Coax from Pasternack Enterprises has same day shipment for domestic and International orders. Our RF, microwave and millimeter wave products maintain a 99.4% availability and are part of the broadest selection in the industry.

Click the following link (or enter part number in "SEARCH" on website) to obtain additional part information including price, inventory and certifications: [TNC Male to SMC Plug Cable Using RG316 Coax PE37393](#)

URL: <https://www.pasternack.com/tnc-male-to-smc-plug-cable-using-rg316-pe37393-p.aspx>

The information contained within this document is accurate to the best of our knowledge and representative of the part described herein. It may be necessary to make modifications to the part and/or the documentation of the part in order to implement improvements. Pasternack Enterprises reserves the right to make such changes as required. Unless otherwise stated, all specifications are nominal. Pasternack Enterprises does not make any representation or warranty regarding the suitability of the part described herein for any particular purpose, and Pasternack Enterprises does not assume liability arising out of the use of any part or document.

PE37393 CAD Drawing
TNC Male to SMC Plug Cable Using RG316 Coax



NOTES:

- 1. CABLE ASSEMBLY LENGTH LABEL PLACEMENT: 36 INCHES OR LESS, ONE LABEL APPROXIMATELY CENTERED. LONGER THAN 36 INCHES, TWO LABELS APPROXIMATELY 6 INCHES FROM EACH CONNECTOR.
- 2. CABLE ASSEMBLY SHALL BE TESTED FOR CONTINUITY.
- 3. CABLE ASSEMBLY LENGTH DETERMINED BY ITEM PN AND DESCRIPTION.

UNLESS OTHERWISE SPECIFIED, LEADING DIMENSIONS ARE IN INCHES. DIMENSIONS IN [] ARE MILLIMETERS.		PE PASTERNAK an INFINITE® brand		INTERPRET ALL DIMENSIONS AND TOLERANCES PER ASME Y14.5	
TOLERANCES:		Website: www.Pasternack.com		SCALE	
X = ±.2 [5]		Phone: 1.866.727.8376 1.949.261.1920		NONE	
.XX = ±.02 [0.5]		DESCRIPTION		SHEET	
.XXX = ±.005 [0.13]		TNC MALE TO SMC PLUG CABLE USING RG316 COAX		1 OF 1	
FRACTIONS ± 1/32		SIZE		CAGE CODE	
ANGLES ± 1°		A		53919	
CABLE LENGTH TOLERANCES:		DRAWN BY		HBAKKE	
>12 [305] ≤ 60 [1524] = ±.125 [-0]		ITEM NO.		PE37393	
>60 [1524] ≤ 120 [3048] = ±.125 [-0]		REV		A	
>120 [3048] ≤ 300 [7620] = ±.125 [-0]		ALL DIMENSIONS ARE FOR REFERENCE ONLY. UNLESS OTHERWISE SPECIFIED, DIMENSIONS ARE IN INCHES. UNLESS OTHERWISE SPECIFIED, DIMENSIONS ARE IN MILLIMETERS. UNLESS OTHERWISE SPECIFIED, DIMENSIONS ARE IN INCHES. UNLESS OTHERWISE SPECIFIED, DIMENSIONS ARE IN MILLIMETERS.		COLORS MAY VARY	