

## BNC Male Right Angle to BNC Female Bulkhead Cable Using 75 Ohm RG179 Coax

### PE37527



#### Configuration

- Connector 1: BNC Male Right Angle
- Connector 2: BNC Female Bulkhead
- Cable Type: RG179
- Coax Flex Type: Flexible

#### Features

- Max Frequency 1 GHz
- FEP Jacket

#### Applications

- General Purpose
- Laboratory Use

#### Description

Pasternack's PE37527 BNC male right angle to BNC female bulkhead cable using 75 ohm RG179 coax is part of our full line of RF components available for same-day shipping. Pasternack's flexible RF cable assemblies are ideal for applications where tight bends and flexure are required. This Pasternack BNC to BNC cable assembly has a male to female gender configuration with 75 ohm flexible RG179 coax. The PE37527 BNC male to BNC female cable assembly operates to 1 GHz. The right angle BNC interface on the RG179 cable allows for easier connections in tight spaces. Our RF cable assembly with BNC bulkhead interface allows designers to create external connections on their product enclosures, and can be used in a variety of other rack mount and panel mount applications.

Custom versions of most RF cable assemblies can be built and shipped same day. Custom cable assembly lengths can be obtained by specifying the desired length on the web site at time of order or by contacting a sales representative. Other available RF cable assembly value added services include connector orientation or clocking, heat shrink booting and custom labeling. RF testing can also be performed to document the electrical performance of your cable assembly.

#### Electrical Specifications

Description	Minimum	Typical	Maximum	Units
Frequency Range	DC		1,000	MHz
VSWR			1.4:1	
Capacitance		23 [75.46]		pF/ft [pF/m]

#### Specifications by Frequency

## BNC Male Right Angle to BNC Female Bulkhead Cable Using 75 Ohm RG179 Coax



### PE37527

Part Number	Length	Description	F1	F2	F3	F4	Units	Weight (lbs)
		Frequency	100	250	500	1000	MHz	
PE37527	Custom Lengths Available	Insertion Loss (Typ.)	0.09	0.14	0.203	0.3	dB/ft	
			0.3	0.45	0.67	0.99	dB/m	
PE37527-12	12 inch	Insertion Loss (Typ.)	0.39	0.44	0.51	0.6	dB	0.106
PE37527-24	24 inch	Insertion Loss (Typ.)	0.48	0.58	0.71	0.9	dB	0.115
PE37527-36	36 inch	Insertion Loss (Typ.)	0.57	0.72	0.91	1.2	dB	0.124
PE37527-48	48 inch	Insertion Loss (Typ.)	0.66	0.85	1.12	1.5	dB	0.133
PE37527-72	72 inch	Insertion Loss (Typ.)	0.84	1.13	1.52	2.1	dB	0.151

The insertion loss data for the base model does not include loss due to the connectors. Each length includes insertion loss due to the connectors.

Loss due to Connector 1: 0.1 dB  
 Loss due to Connector 2: 0.2 dB  
 Base Weight: 0.106 pounds  
 Additional Weight per Inch: 0.00075 pounds

## Mechanical Specifications

### Cable Assembly

Weight 0.106 lbs [48.08 g]

### Cable

Cable Type RG179  
 Impedance 75 Ohms  
 Inner Conductor Type Stranded  
 Inner Conductor Material and Plating Copper Clad Steel, Silver  
 Dielectric Type PTFE  
 Number of Shields 1  
 Shield Layer 1 Silver Plated Copper Braid  
 Jacket Material FEP, Tan  
 Jacket Diameter 0.1 in [2.54 mm]

## BNC Male Right Angle to BNC Female Bulkhead Cable Using 75 Ohm RG179 Coax

**PE37527**



### Connectors

Description	Connector 1	Connector 2
Type	BNC Male Right Angle	BNC Female Bulkhead
Impedance	50 Ohms	50 Ohms
Configuration	Right Angle	Straight
Contact Material and Plating	Brass, Gold	Brass, Gold
Contact Plating Specification	30 µin minimum	30 µin minimum
Dielectric Type	PTFE	PTFE
Body Material and Plating	Brass, Nickel	Brass, Nickel
Body Plating Specification	100 µin minimum	100 µin minimum
Coupling Nut Material and Plating	Brass, Nickel	
Coupling Nut Plating Specification	100 µin minimum	

### Environmental Specifications

Operating Range Temperature -55 to +165 deg C

**Compliance Certifications** (see [product page](#) for current document)

### Plotted and Other Data

Notes:  
Values at 25°C, sea level.

## BNC Male Right Angle to BNC Female Bulkhead Cable Using 75 Ohm RG179 Coax



### PE37527

#### Typical Performance Data

#### How to Order

Part Number Configuration:

**PE37527**

**- xx**

**uu**

Unit of Measure:  
cm = Centimeters  
<blank> = Inches

Length  
Base Number

Example: PE37527-12 = 12 inches long cable  
PE37527-100cm = 100 cm long cable

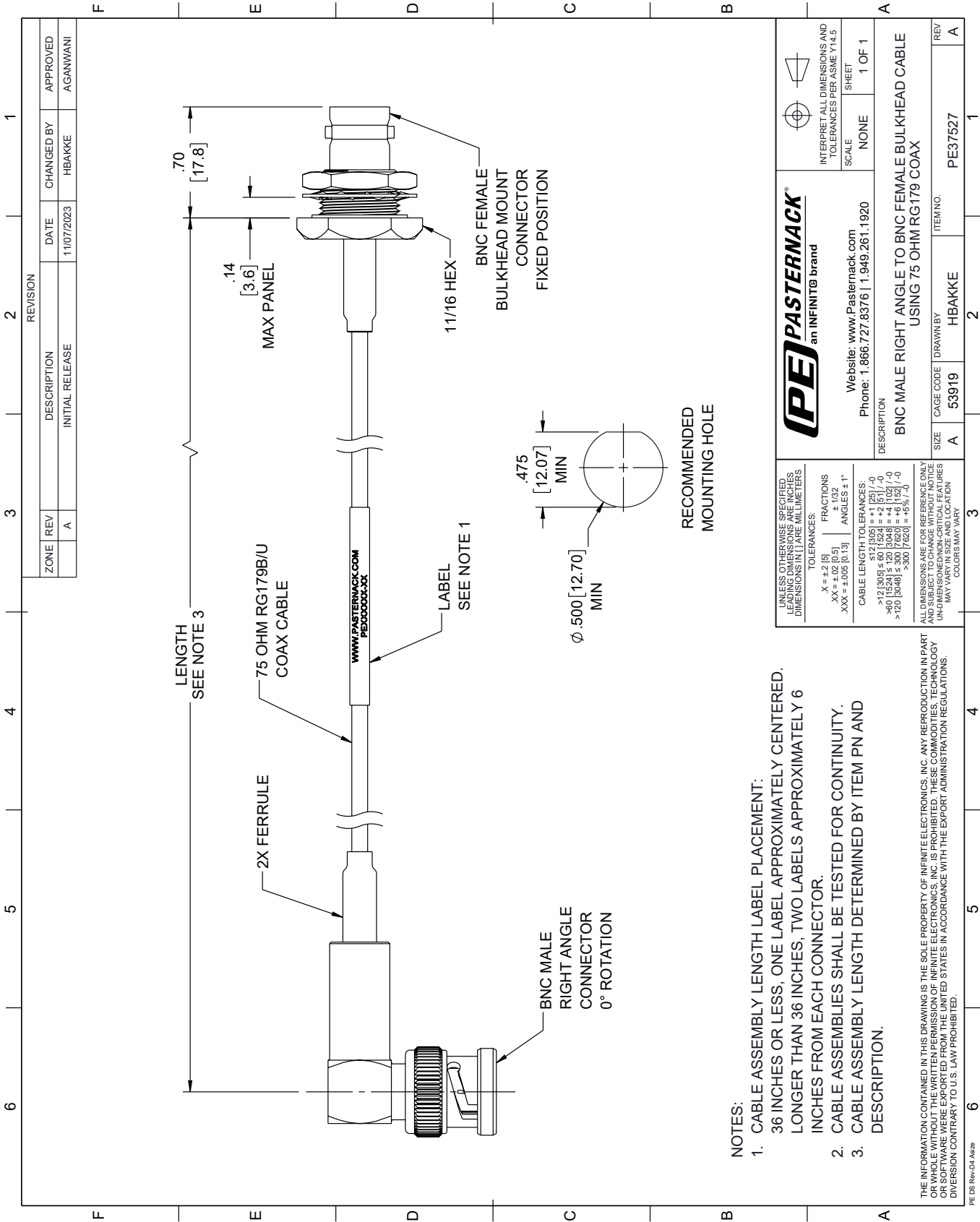
BNC Male Right Angle to BNC Female Bulkhead Cable Using 75 Ohm RG179 Coax from Pasternack Enterprises has same day shipment for domestic and International orders. Our RF, microwave and millimeter wave products maintain a 99.4% availability and are part of the broadest selection in the industry.

Click the following link (or enter part number in "SEARCH" on website) to obtain additional part information including price, inventory and certifications: [BNC Male Right Angle to BNC Female Bulkhead Cable Using 75 Ohm RG179 Coax PE37527](https://www.pasternack.com/bnc-male-right-angle-to-bnc-female-bulkhead-cable-using-rg179-pe37527-p.aspx)

URL: <https://www.pasternack.com/bnc-male-right-angle-to-bnc-female-bulkhead-cable-using-rg179-pe37527-p.aspx>

The information contained within this document is accurate to the best of our knowledge and representative of the part described herein. It may be necessary to make modifications to the part and/or the documentation of the part in order to implement improvements. Pasternack Enterprises reserves the right to make such changes as required. Unless otherwise stated, all specifications are nominal. Pasternack Enterprises does not make any representation or warranty regarding the suitability of the part described herein for any particular purpose, and Pasternack Enterprises does not assume liability arising out of the use of any part or document.

PE37527 CAD Drawing
BNC Male Right Angle to BNC Female Bulkhead Cable Using 75 Ohm RG179 Coax



- NOTES:
- 1. CABLE ASSEMBLY LENGTH LABEL PLACEMENT: 36 INCHES OR LESS, ONE LABEL APPROXIMATELY CENTERED. LONGER THAN 36 INCHES, TWO LABELS APPROXIMATELY 6 INCHES FROM EACH CONNECTOR.
  - 2. CABLE ASSEMBLIES SHALL BE TESTED FOR CONTINUITY.
  - 3. CABLE ASSEMBLY LENGTH DETERMINED BY ITEM PN AND DESCRIPTION.

THE INFORMATION CONTAINED IN THIS DRAWING IS THE SOLE PROPERTY OF INFINITE ELECTRONICS, INC. ANY REPRODUCTION IN PART OR WHOLE WITHOUT THE WRITTEN PERMISSION OF INFINITE ELECTRONICS, INC. IS PROHIBITED. THESE COMMODITIES, TECHNOLOGY OR SOFTWARE WERE EXPORTED FROM THE UNITED STATES IN ACCORDANCE WITH THE EXPORT ADMINISTRATION REGULATIONS. DIVISION CONTRARY TO U.S. LAW PROHIBITED.

UNLESS OTHERWISE SPECIFIED, LEADING DIMENSIONS ARE IN INCHES. DIMENSIONS IN [ ] ARE IN MILLIMETERS.		<b>PE PASTERNAK</b> an INFINITI® brand		INTERPRET ALL DIMENSIONS AND TOLERANCES PER ASME Y14.5	
TOLERANCES:		Website: <a href="http://www.Pasternack.com">www.Pasternack.com</a>		SCALE	
.X = ±.2 [5]		Phone: 1.866.727.8376   1.949.261.1920		NONE	
.XX = ±.02 [0.5]				SHEET	
.XXX = ±.005 [0.13]				1 OF 1	
ANGLES ± 1°					
CABLE LENGTH TOLERANCES:		DESCRIPTION			
>12 [305] ≤ 60 [1524] = ±.125 [3.18] / -0		BNC MALE RIGHT ANGLE TO BNC FEMALE BULKHEAD CABLE			
>60 [1524] ≤ 120 [3048] = ±.110 [2.79] / -0		USING 75 OHM RG179 COAX			
>120 [3048] ≤ 300 [7620] = ±.063 [1.60] / -0					
ALL DIMENSIONS ARE FOR REFERENCE ONLY. UNLESS OTHERWISE SPECIFIED, DIMENSIONS ARE IN INCHES. DIMENSIONS IN [ ] ARE IN MILLIMETERS. UNLESS OTHERWISE SPECIFIED, DIMENSIONS ARE IN INCHES. DIMENSIONS IN [ ] ARE IN MILLIMETERS. UNLESS OTHERWISE SPECIFIED, DIMENSIONS ARE IN INCHES. DIMENSIONS IN [ ] ARE IN MILLIMETERS.		SIZE		REV	
MAY VARY IN SIZE AND LOCATION. COLORS MAY VARY.		A 53919		A	
		DRAWN BY			
		HBAKKE			
		ITEM NO.			
		PE37527			