



SMA Male Right Angle to N Male Cable Using PE-SR402AL Coax

TECHNICAL DATA SHEET

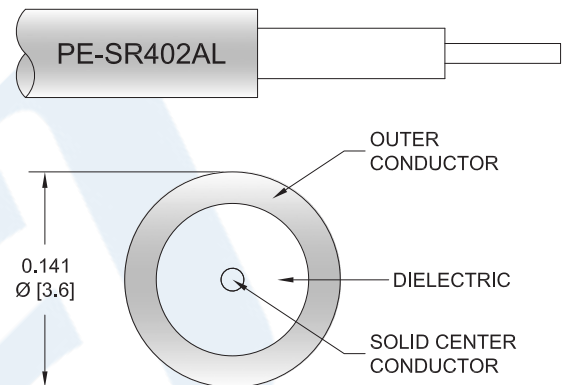
PE37598

Configuration

- Connector 1: SMA Male Right Angle
- Connector 2: N Male
- Cable Type: PE-SR402AL
- Coax Flex Type: Semi-Rigid

Features

- Max Frequency 8 GHz



Applications

- General Purpose
- Laboratory Use

Description

Pasternack's PE37598 SMA male right angle to type N male cable using PE-SR402AL coax is part of our full line of RF components available for same-day shipping. Pasternack's semi-rigid RF cable assemblies are ideal for high performance applications and can be formed, using proper tooling, to the routing pattern required. This Pasternack SMA to type N cable assembly has a male to male gender configuration with 50 ohm semi-rigid PE-SR402AL coax. The PE37598 SMA male to type N male cable assembly operates to 8 GHz. The right angle SMA interface on the PE-SR402AL cable allows for easier connections in tight spaces.

Custom versions of most RF cable assemblies can be built and shipped same day. Custom cable assembly lengths can be obtained by specifying the desired length on the web site at time of order or by contacting a sales representative. Other available RF cable assembly value added services include connector orientation or clocking, heat shrink booting and custom labeling. RF testing can also be performed to document the electrical performance of your cable assembly.

Click the following link (or enter part number in "SEARCH" on website) to obtain additional part information including price, inventory and certifications: [SMA Male Right Angle to N Male Cable Using PE-SR402AL Coax PE37598](#)



SMA Male Right Angle to N Male Cable Using PE-SR402AL Coax

TECHNICAL DATA SHEET

PE37598

Electrical Specifications

Description	Minimum	Typical	Maximum	Units
Frequency Range	DC		8	GHz
Dielectric Withstanding Voltage (AC)			1,000	Vrms

Specifications by Frequency

Part Number	Length	Description	F1	F2	F3	F4	F5	Units	Weight (lbs)
		Frequency	1000	2000	4000	8000	0	MHz	
PE37598	Custom Lengths Available	Insertion Loss (Typ.)	0.13	0.16	0.24	0.38	0	dB/ft	
			0.43	0.53	0.79	1.25	0	dB/m	
PE37598-6	6 inch	Insertion Loss (Typ.)	0.37	0.38	0.42	0.49	0	dB	0.101
PE37598-12	12 inch	Insertion Loss (Typ.)	0.43	0.46	0.54	0.68	0	dB	0.109
PE37598-24	24 inch	Insertion Loss (Typ.)	0.56	0.62	0.78	1.06	0	dB	0.127
PE37598-36	36 inch	Insertion Loss (Typ.)	0.69	0.78	1.02	1.44	0	dB	0.144
PE37598-48	48 inch	Insertion Loss (Typ.)	0.82	0.94	1.26	1.82	0	dB	0.161

The insertion loss data for the base model does not include loss due to the connectors. Each length includes insertion loss due to the connectors.

Loss due to Connector 1: 0.2 dB

Loss due to Connector 2: 0.1 dB

Base Weight: 0.109 pounds

Additional Weight per Inch: 0.00144 pounds

Electrical Specification Notes:

Insertion Loss does not include the loss of the connectors. Insertion Loss is estimated as 0.1 dB for the straight connector and 0.2 dB for the right angle connector.

Mechanical Specifications

Cable Assembly

Weight 0.109 lbs [49.44 g]

Cable

Cable Type PE-SR402AL
 Impedance 50 Ohms
 Inner Conductor Type Solid
 Inner Conductor Material and Plating Copper Clad Steel, Silver
 Dielectric Type PTFE
 Number of Shields 1
 Shield Layer 1 Tinned Aluminum
 Jacket Diameter 0.141 in [3.58 mm]

One Time Minimum Bend Radius 0.1 in [2.54 mm]

Click the following link (or enter part number in "SEARCH" on website) to obtain additional part information including price, inventory and certifications: [SMA Male Right Angle to N Male Cable Using PE-SR402AL Coax PE37598](#)



SMA Male Right Angle to N Male Cable Using PE-SR402AL Coax

TECHNICAL DATA SHEET

PE37598

Connectors

Description	Connector 1	Connector 2
Type	SMA Male Right Angle Threaded	N Male Threaded
Specification	MIL-STD-348A	MIL-STD-348A
Impedance	50 Ohms	50 Ohms
Contact Material and Plating	Brass, Gold	Brass, Gold
Contact Plating Specification	50μ in. minimum	30μ in. minimum
Dielectric Type	Teflon	Teflon
Body Material and Plating	Stainless Steel, Gold	Brass, Gold
Body Plating Specification	30μ in. minimum	
Coupling Nut Material and Plating	Brass, Nickel	
Coupling Nut Plating Specification	100μ in. minimum	
Hex Size	5/16 in	
Torque	5 in-lbs [0.57 Nm]	

Compliance Certifications (see [product page](#) for current document)

Plotted and Other Data

Notes:

- Values at 25°C, sea level.

Click the following link (or enter part number in "SEARCH" on website) to obtain additional part information including price, inventory and certifications: [SMA Male Right Angle to N Male Cable Using PE-SR402AL Coax PE37598](#)



SMA Male Right Angle to N Male Cable Using PE-SR402AL Coax

TECHNICAL DATA SHEET

PE37598

How to Order

Part Number Configuration:

PE37598

- **xx**

uu

Unit of Measure:
cm = Centimeters
<blank> = Inches
Length
Base Number

Example: PE37598-12 = 12 inches long cable
PE37598-100cm = 100 cm long cable

SMA Male Right Angle to N Male Cable Using PE-SR402AL Coax from Pasternack Enterprises has same day shipment for domestic and International orders. Our RF, microwave and millimeter wave products maintain a 99.4% availability and are part of the broadest selection in the industry.

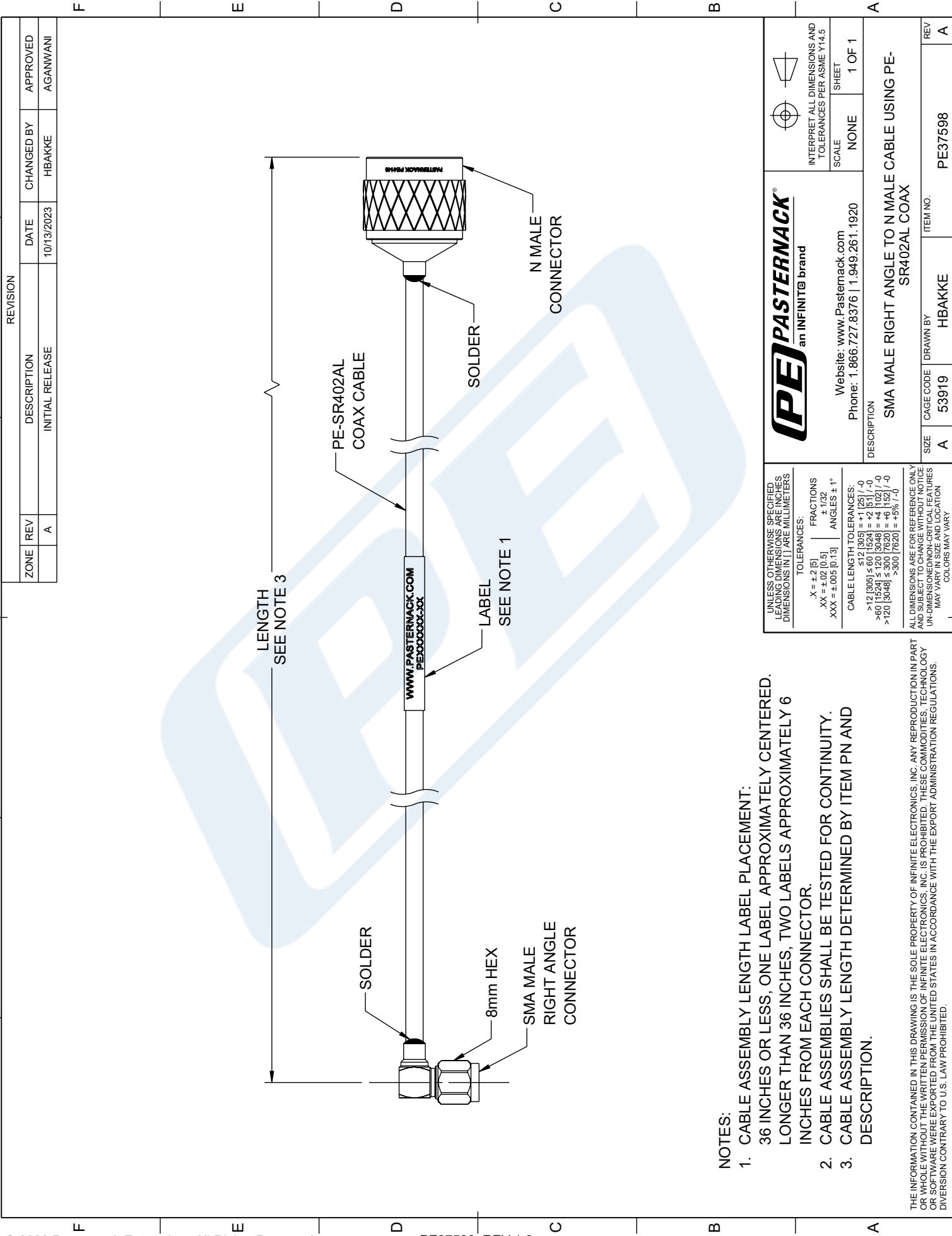
Click the following link (or enter part number in "SEARCH" on website) to obtain additional part information including price, inventory and certifications: [SMA Male Right Angle to N Male Cable Using PE-SR402AL Coax PE37598](#)

URL: <https://www.pasternack.com/sma-male-right-angle-to-n-male-cable-using-pe-sr402al-pe37598-p.aspx>

The information contained in this document is accurate to the best of our knowledge and representative of the part described herein. It may be necessary to make modifications to the part and/or the documentation of the part, in order to implement improvements. Pasternack reserves the right to make such changes as required. Unless otherwise stated, all specifications are nominal. Pasternack does not make any representation or warranty regarding the suitability of the part described herein for any particular purpose, and Pasternack does not assume any liability arising out of the use of any part or documentation.

PE37598 CAD Drawing

SMA Male Right Angle to N Male Cable Using PE-SR402AL Coax



UNLESS OTHERWISE SPECIFIED, LEADING DIMENSIONS ARE IN INCHES, DIMENSIONS IN [] ARE MILLIMETERS.

X = ±.2 [5]	FRACTIONS ± 1/32
XX = ±.02 [0.5]	ANGLES ± 1°
XXX = ±.005 [0.13]	

CABLE LENGTH TOLERANCES:
>12 [305] ≤ 30 [762] = ±.125 [-0
30 [762] ≤ 60 [1524] = ±.25 [-0
60 [1524] ≤ 120 [3048] = ±.5 [-0
>120 [3048] ≤ 300 [7620] = ±.75 [-0
>300 [7620] = ±.5% [-0

ALL DIMENSIONS ARE FOR REFERENCE ONLY. UNLESS OTHERWISE SPECIFIED, DIMENSIONS ARE IN INCHES. UNLESS OTHERWISE SPECIFIED, DIMENSIONS IN [] ARE MILLIMETERS. DIMENSIONS MAY VARY IN SIZE AND LOCATION. COLORS MAY VARY.

PE PASTERNAK
an INFINIT® brand

Website: www.Pasternack.com
Phone: 1.866.727.8376 | 1.949.261.1920

INTERPRET ALL DIMENSIONS AND TOLERANCES PER ASME Y14.5

SCALE NONE SHEET 1 OF 1

DESCRIPTION
SMA MALE RIGHT ANGLE TO N MALE CABLE USING PE-SR402AL COAX

SIZE A	CAGE CODE 53919	DRAWN BY HBAKKE	ITEM NO. PE37598	REV A
--------	-----------------	-----------------	------------------	-------

NOTES:

- CABLE ASSEMBLY LENGTH LABEL PLACEMENT:
36 INCHES OR LESS, ONE LABEL APPROXIMATELY CENTERED.
LONGER THAN 36 INCHES, TWO LABELS APPROXIMATELY 6 INCHES FROM EACH CONNECTOR.
- CABLE ASSEMBLIES SHALL BE TESTED FOR CONTINUITY.
- CABLE ASSEMBLY LENGTH DETERMINED BY ITEM PN AND DESCRIPTION.

THE INFORMATION CONTAINED IN THIS DRAWING IS THE SOLE PROPERTY OF INFINITE ELECTRONICS, INC. ANY REPRODUCTION IN PART OR WHOLE WITHOUT THE WRITTEN PERMISSION OF INFINITE ELECTRONICS, INC. IS PROHIBITED. THESE COMMODITIES, TECHNOLOGY OR SOFTWARE WERE EXPORTED FROM THE UNITED STATES IN ACCORDANCE WITH THE EXPORT ADMINISTRATION REGULATIONS. DIVERSION CONTRARY TO U.S. LAW PROHIBITED.