

7/16 DIN Male to LC Male Cable Using RG218 Coax

PE38313



Configuration

- Connector 1: 7/16 DIN Male
- Connector 2: LC Male
- Cable Type: RG218
- Coax Flex Type: Flexible

Features

- Max Frequency 1 GHz
- 66% Phase Velocity
- PVC Jacket

Applications

- General Purpose
- Laboratory Use

Description

Pasternack's PE38313 7/16 DIN male to LC male cable using RG218 coax is part of our full line of RF components available for same-day shipping. Pasternack's flexible RF cable assemblies are ideal for applications where tight bends and flexure are required. This Pasternack 7/16 DIN to LC cable assembly has a male to male gender configuration with 50 ohm flexible RG218 coax. The PE38313 7/16 DIN male to LC male cable assembly operates to 1 GHz.

Custom versions of most RF cable assemblies can be built and shipped same day. Custom cable assembly lengths can be obtained by specifying the desired length on the web site at time of order or by contacting a sales representative. Other available RF cable assembly value added services include connector orientation or clocking, heat shrink booting and custom labeling. RF testing can also be performed to document the electrical performance of your cable assembly.

Electrical Specifications

Description	Minimum	Typical	Maximum	Units
Frequency Range	DC		1,000	MHz
VSWR			1.4:1	
Velocity of Propagation		66		%
Capacitance		30.8 [101.05]		pF/ft [pF/m]

Specifications by Frequency



7/16 DIN Male to LC Male Cable Using RG218 Coax

PE38313

Part Number	Length	Description	F1	F2	F3	F4	F5	Units	Weight (lbs)
		Frequency	50	100	250	500	1000	MHz	
PE38313	Custom Lengths Available	Insertion Loss (Typ.)	0.01	0.01	0.018	0.031	0.05	dB/ft	
			0.02	0.04	0.06	0.11	0.17	dB/m	
PE38313-24	24 inch	Insertion Loss (Typ.)	0.22	0.22	0.24	0.27	0.3	dB	2.316
PE38313-36	36 inch	Insertion Loss (Typ.)	0.22	0.23	0.26	0.3	0.35	dB	2.792
PE38313-48	48 inch	Insertion Loss (Typ.)	0.23	0.24	0.28	0.33	0.4	dB	3.268
PE38313-72	72 inch	Insertion Loss (Typ.)	0.24	0.26	0.31	0.39	0.5	dB	4.22
PE38313-96	96 inch	Insertion Loss (Typ.)	0.25	0.28	0.35	0.45	0.6	dB	5.172

The insertion loss data for the base model does not include loss due to the connectors. Each length includes insertion loss due to the connectors.

Loss due to Connector 1: 0.1 dB
 Loss due to Connector 2: 0.1 dB
 Base Weight: 1.839 pounds
 Additional Weight per Inch: 0.03967 pounds

Mechanical Specifications

Cable Assembly

Weight 1.839 lbs [834.16 g]

Cable

Cable Type RG218
 Impedance 50 Ohms
 Inner Conductor Type Solid
 Inner Conductor Material and Plating Copper
 Dielectric Type PE
 Number of Shields 1
 Shield Layer 1 Copper Braid
 Jacket Material PVC, Black
 Jacket Diameter 0.87 in [22.1 mm]

7/16 DIN Male to LC Male Cable Using RG218 Coax

PE38313



Connectors

Description	Connector 1	Connector 2
Type	7/16 DIN Male	LC Male
Specification	MIL-C-39012	MIL-STD-348
Impedance	50 Ohms	50 Ohms
Configuration	Straight	Straight
Contact Material and Plating	Brass, Silver over Copper	Beryllium Copper, Silver
Contact Plating Specification	QQ-S-365	ASTM-B700
Dielectric Type	PTFE	
Body Material and Plating	Brass, Nickel	Phosphor Bronze, Nickel
Body Plating Specification	QQ-N-290	ASTM-B689
Coupling Nut Material and Plating	Brass, Nickel	Brass, Nickel
Coupling Nut Plating Specification	QQ-N-290	ASTM-B689
Hex Size	1 1/4 inch	1 1/2 inch

Environmental Specifications

Operating Range Temperature -40 to +80 deg C

Compliance Certifications (see [product page](#) for current document)

Plotted and Other Data

Notes:



7/16 DIN Male to LC Male Cable Using RG218 Coax

PE38313

Typical Performance Data

How to Order

Part Number Configuration:

PE38313

- xx

uu

Unit of Measure:
cm = Centimeters
<blank> = Inches

Length

Base Number

Example: PE38313-12 = 12 inches long cable
PE38313-100cm = 100 cm long cable

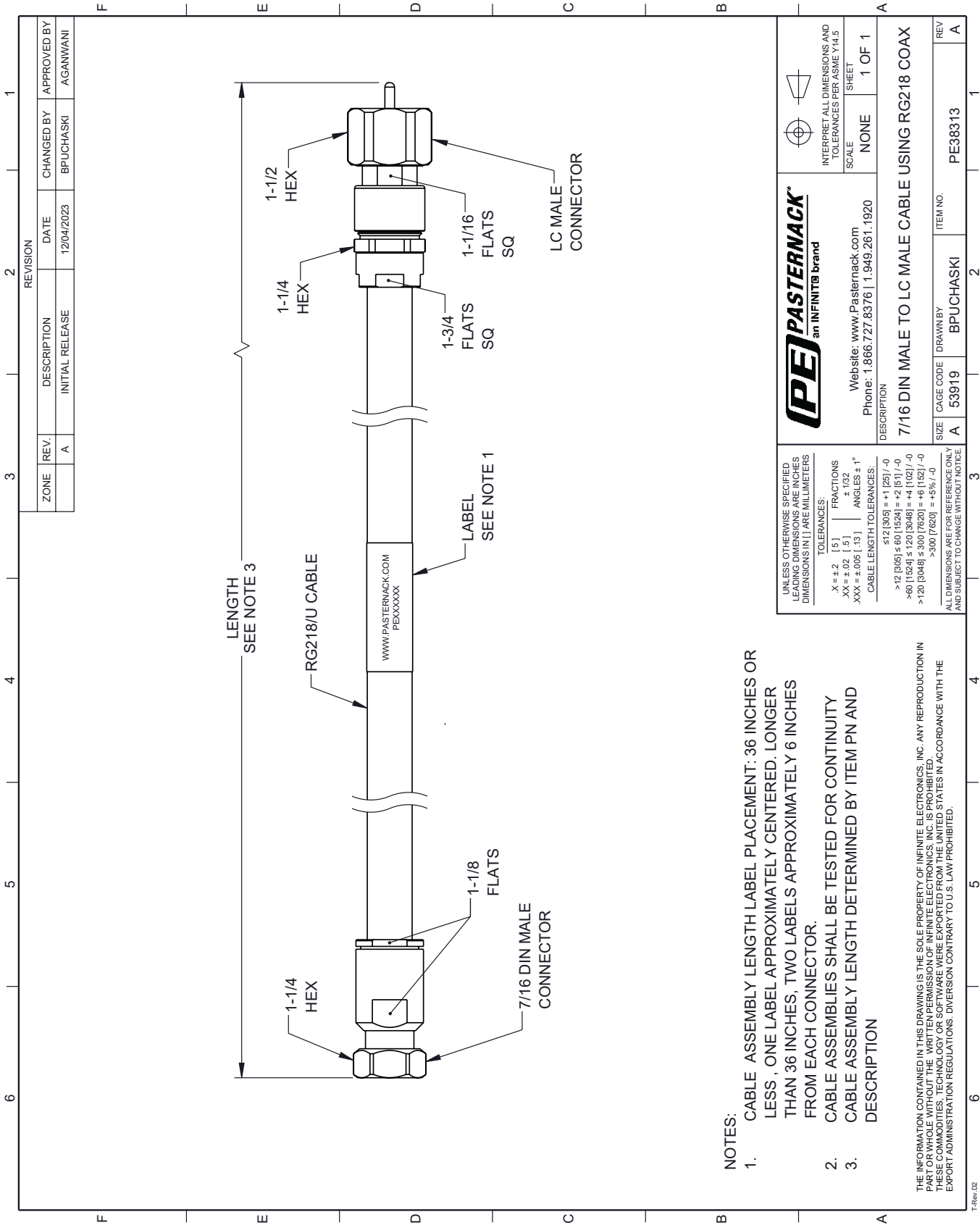
7/16 DIN Male to LC Male Cable Using RG218 Coax from Pasternack Enterprises has same day shipment for domestic and International orders. Our RF, microwave and millimeter wave products maintain a 99.4% availability and are part of the broadest selection in the industry.

Click the following link (or enter part number in "SEARCH" on website) to obtain additional part information including price, inventory and certifications: [7/16 DIN Male to LC Male Cable Using RG218 Coax PE38313](#)

URL: <https://www.pasternack.com/7-16-din-male-to-lc-male-cable-using-rg218-pe38313-p.aspx>

The information contained within this document is accurate to the best of our knowledge and representative of the part described herein. It may be necessary to make modifications to the part and/or the documentation of the part in order to implement improvements. Pasternack Enterprises reserves the right to make such changes as required. Unless otherwise stated, all specifications are nominal. Pasternack Enterprises does not make any representation or warranty regarding the suitability of the part described herein for any particular purpose, and Pasternack Enterprises does not assume liability arising out of the use of any part or document.

PE38313 CAD Drawing
7/16 DIN Male to LC Male Cable Using RG218 Coax



- NOTES:
- 1. CABLE ASSEMBLY LENGTH LABEL PLACEMENT: 36 INCHES OR LESS, ONE LABEL APPROXIMATELY CENTERED. LONGER THAN 36 INCHES, TWO LABELS APPROXIMATELY 6 INCHES FROM EACH CONNECTOR.
 - 2. CABLE ASSEMBLIES SHALL BE TESTED FOR CONTINUITY
 - 3. CABLE ASSEMBLY LENGTH DETERMINED BY ITEM PN AND DESCRIPTION

THE INFORMATION CONTAINED IN THIS DRAWING IS THE SOLE PROPERTY OF INFINITE ELECTRONICS, INC. ANY REPRODUCTION IN PART OR WHOLE WITHOUT THE WRITTEN PERMISSION OF INFINITE ELECTRONICS, INC. IS PROHIBITED. THESE COMMODITIES, TECHNOLOGY OR SOFTWARE WERE EXPORTED FROM THE UNITED STATES IN ACCORDANCE WITH THE EXPORT ADMINISTRATION REGULATIONS. DIVERSION CONTRARY TO U.S. LAW PROHIBITED.