

N Female Bulkhead to MCX Plug Right Angle Cable Using RG316-DS Coax



PE38511

Configuration

- Connector 1: N Female Bulkhead
- Connector 2: MCX Plug Right Angle
- Cable Type: RG316-DS
- Coax Flex Type: Flexible

Features

- Max Frequency 3 GHz
- 70% Phase Velocity
- Double Shielded
- FEP Jacket



Applications

- General Purpose
- Laboratory Use

Description

Pasternack's PE38511 type N female bulkhead to MCX plug right angle cable using RG316-DS coax is part of our full line of RF components available for same-day shipping. Pasternack's flexible RF cable assemblies are ideal for applications where tight bends and flexure are required. This Pasternack type N to MCX cable assembly has a female to plug gender configuration with 50 ohm flexible RG316-DS coax. The PE38511 type N female to MCX plug cable assembly operates to 3 GHz. The right angle MCX interface on the RG316-DS cable allows for easier connections in tight spaces. Our RF cable assembly with type N bulkhead interface allows designers to create external connections on their product enclosures, and can be used in a variety of other rack mount and panel mount applications. The double shielding of this Pasternack cable assembly provides excellent shielding effectiveness.

Custom versions of most RF cable assemblies can be built and shipped same day. Custom cable assembly lengths can be obtained by specifying the desired length on the web site at time of order or by contacting a sales representative. Other available RF cable assembly value added services include connector orientation or clocking, heat shrink booting and custom labeling. RF testing can also be performed to document the electrical performance of your cable assembly.

Electrical Specifications

Description	Minimum	Typical	Maximum	Units
Frequency Range	DC		3	GHz
VSWR		1.4:1		
Velocity of Propagation		70		%
Capacitance		29.4 [96.46]		pF/ft [pF/m]

Specifications by Frequency

N Female Bulkhead to MCX Plug Right Angle Cable Using RG316-DS Coax



PE38511

Part Number	Length	Description	F1	F2	F3	F4	F5	Units	Weight (lbs)
		Frequency	100	250	500	1000	3000	MHz	
PE38511	Custom Lengths Available	Insertion Loss (Typ.)	0.08	0.13	0.194	0.29	0.535	dB/ft	
			0.27	0.42	0.64	0.96	1.76	dB/m	
PE38511-6	6 inch	Insertion Loss (Typ.)	0.35	0.37	0.4	0.45	0.57	dB	0.095
PE38511-12	12 inch	Insertion Loss (Typ.)	0.39	0.43	0.5	0.59	0.84	dB	0.102
PE38511-24	24 inch	Insertion Loss (Typ.)	0.47	0.56	0.69	0.88	1.37	dB	0.117
PE38511-36	36 inch	Insertion Loss (Typ.)	0.55	0.69	0.89	1.17	1.91	dB	0.131
PE38511-48	48 inch	Insertion Loss (Typ.)	0.63	0.82	1.08	1.46	2.44	dB	0.145

The insertion loss data for the base model does not include loss due to the connectors. Each length includes insertion loss due to the connectors.

Loss due to Connector 1:	0.1 dB
Loss due to Connector 2:	0.2 dB
Base Weight:	0.102 pounds
Additional Weight per Inch:	0.00117 pounds

Mechanical Specifications

Cable Assembly

Weight	0.102 lbs [46.27 g]
--------	---------------------

Cable

Cable Type	RG316-DS
Impedance	50 Ohms
Inner Conductor Type	Stranded
Inner Conductor Material and Plating	Copper Clad Steel, Silver
Dielectric Type	PTFE
Number of Shields	2
Shield Layer 1	Silver Plated Copper Braid
Shield Layer 2	Silver Plated Copper Braid
Jacket Material	FEP, Tan
Jacket Diameter	0.114 in [2.9 mm]
One Time Minimum Bend Radius	0.59 in [14.99 mm]

N Female Bulkhead to MCX Plug Right Angle Cable Using RG316-DS Coax



PE38511

Connectors

Description	Connector 1	Connector 2
Type	N Female Bulkhead	MCX Plug Right Angle
Specification	MIL-STD-348A	
Impedance	50 Ohms	50 Ohms
Configuration	Straight	Right Angle
Mating Cycles	100	
Contact Material and Plating	Brass, Gold	
Contact Plating Specification	30 µin minimum	
Dielectric Type	Teflon	
Body Material and Plating	Brass, Nickel	Brass, Nickel
Body Plating Specification	100 µin minimum	

Environmental Specifications

Compliance Certifications (see [product page](#) for current document)

Plotted and Other Data

Notes:

N Female Bulkhead to MCX Plug Right Angle Cable Using RG316-DS Coax



PE38511

Typical Performance Data

How to Order

Part Number Configuration:

PE38511 **- xx** **uu**

Unit of Measure:
cm = Centimeters
<blank> = Inches

Length

Base Number

Example: PE38511-12 = 12 inches long cable
 PE38511-100cm = 100 cm long cable

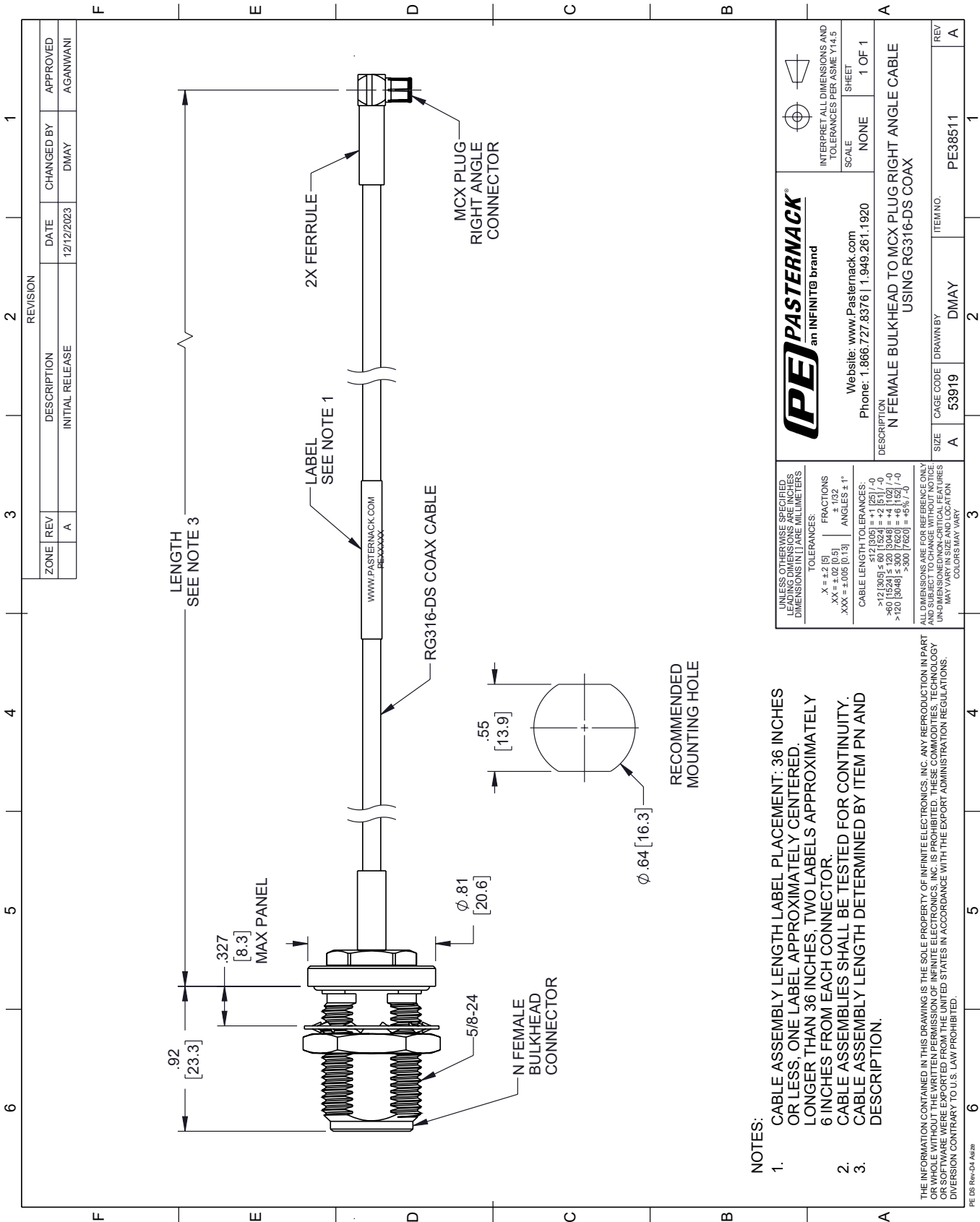
N Female Bulkhead to MCX Plug Right Angle Cable Using RG316-DS Coax from Pasternack Enterprises has same day shipment for domestic and International orders. Our RF, microwave and millimeter wave products maintain a 99.4% availability and are part of the broadest selection in the industry.

Click the following link (or enter part number in "SEARCH" on website) to obtain additional part information including price, inventory and certifications: [N Female Bulkhead to MCX Plug Right Angle Cable Using RG316-DS Coax PE38511](#)

URL: <https://www.pasternack.com/n-female-bulkhead-to-mcx-plug-cable-using-rg316-ds-pe38511-p.aspx>

The information contained within this document is accurate to the best of our knowledge and representative of the part described herein. It may be necessary to make modifications to the part and/or the documentation of the part in order to implement improvements. Pasternack Enterprises reserves the right to make such changes as required. Unless otherwise stated, all specifications are nominal. Pasternack Enterprises does not make any representation or warranty regarding the suitability of the part described herein for any particular purpose, and Pasternack Enterprises does not assume liability arising out of the use of any part or document.

PE38511 CAD Drawing
N Female Bulkhead to MCX Plug Right Angle Cable Using RG316-DS Coax



- NOTES:
- 1. CABLE ASSEMBLY LENGTH LABEL PLACEMENT: 36 INCHES OR LESS, ONE LABEL APPROXIMATELY CENTERED. LONGER THAN 36 INCHES, TWO LABELS APPROXIMATELY 6 INCHES FROM EACH CONNECTOR.
- 2. CABLE ASSEMBLIES SHALL BE TESTED FOR CONTINUITY.
- 3. CABLE ASSEMBLY LENGTH DETERMINED BY ITEM PN AND DESCRIPTION.

UNLESS OTHERWISE SPECIFIED, ALL DIMENSIONS ARE IN INCHES. DIMENSIONS IN [] ARE MILLIMETERS.		PE PASTERNAK an INFINITI® brand		INTERPRET ALL DIMENSIONS AND TOLERANCES PER ASME Y14.5	
TOLERANCES:		Website: www.Pasternack.com		SCALE	
X = ±.2 [5]		Phone: 1.866.727.8376 1.949.261.1920		NONE	
.XX = ±.02 [0.5]				SHEET	
.XXX = ±.005 [0.13]				1 OF 1	
FRACTIONS					
± 1/32					
ANGLES ± 1°					
CABLE LENGTH TOLERANCES:					
±12 [305] ≤ 60 [1524] = ±1 [25] / -0					
>60 [1524] ≤ 120 [3048] = ±4 [102] / -0					
>120 [3048] ≤ 300 [7620] = ±5% / -0					
ALL DIMENSIONS ARE FOR REFERENCE ONLY. UNLESS OTHERWISE SPECIFIED, DIMENSIONS MAY VARY IN SIZE AND LOCATION. COLORS MAY VARY.					
DESCRIPTION		N FEMALE BULKHEAD TO MCX PLUG RIGHT ANGLE CABLE USING RG316-DS COAX			
SIZE		A			
CAGE CODE		53919			
DRAWN BY		DMAY			
ITEM NO.		PE38511			
REV		A			