

SMA Male to SMB Plug Right Angle Cable Using RG174 Coax

PE3907

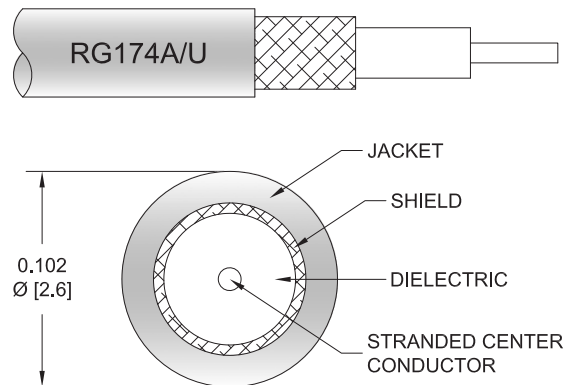


Configuration

- Connector 1: SMA Male
- Connector 2: SMB Plug Right Angle
- Cable Type: RG174
- Coax Flex Type: Flexible

Features

- Max Frequency 1 GHz
- 66% Phase Velocity
- PVC Jacket



Applications

- General Purpose
- Laboratory Use

Description

Pasternack's PE3907 SMA male to SMB plug right angle cable using RG174 coax is part of our full line of RF components available for same-day shipping. Pasternack's flexible RF cable assemblies are ideal for applications where tight bends and flexure are required. This Pasternack SMA to SMB cable assembly has a male to plug gender configuration with 50 ohm flexible RG174 coax. The PE3907 SMA male to SMB plug cable assembly operates to 1 GHz. The right angle SMB interface on the RG174 cable allows for easier connections in tight spaces.

Custom versions of most RF cable assemblies can be built and shipped same day. Custom cable assembly lengths can be obtained by specifying the desired length on the web site at time of order or by contacting a sales representative. Other available RF cable assembly value added services include connector orientation or clocking, heat shrink booting and custom labeling. RF testing can also be performed to document the electrical performance of your cable assembly.

Electrical Specifications

Description	Minimum	Typical	Maximum	Units
Frequency Range	DC		1,000	MHz
VSWR			1.4:1	
Velocity of Propagation		66		%
Capacitance		30.8 [101.05]		pF/ft [pF/m]

Specifications by Frequency

SMA Male to SMB Plug Right Angle Cable Using RG174 Coax



PE3907

Part Number	Length	Description	F1	F2	F3	F4	Units	Weight (lbs)
		Frequency	100	250	500	1000	MHz	
PE3907	Custom Lengths Available	Insertion Loss (Typ.)	0.08	0.14	0.21	0.32	dB/ft	
			0.28	0.45	0.7	1.05	dB/m	
PE3907-12	12 inch	Insertion Loss (Typ.)	0.39	0.44	0.52	0.62	dB	0.034
PE3907-24	24 inch	Insertion Loss (Typ.)	0.47	0.58	0.73	0.94	dB	0.043
PE3907-36	36 inch	Insertion Loss (Typ.)	0.56	0.72	0.94	1.26	dB	0.052
PE3907-48	48 inch	Insertion Loss (Typ.)	0.64	0.85	1.15	1.58	dB	0.061
PE3907-72	72 inch	Insertion Loss (Typ.)	0.81	1.13	1.57	2.22	dB	0.079

The insertion loss data for the base model does not include loss due to the connectors. Each length includes insertion loss due to the connectors.

Loss due to Connector 1: 0.1 dB
 Loss due to Connector 2: 0.2 dB
 Base Weight: 0.034 pounds
 Additional Weight per Inch: 0.00075 pounds

Mechanical Specifications

Cable Assembly

Weight 0.034 lbs [15.42 g]

Cable

Cable Type RG174
 Impedance 50 Ohms
 Inner Conductor Type Stranded
 Inner Conductor Material and Plating Copper Clad Steel
 Dielectric Type PE (LD)
 Number of Shields 1
 Shield Layer 1 Tinned Copper Braid
 Jacket Material PVC, Black
 Jacket Diameter 0.1 in [2.54 mm]

SMA Male to SMB Plug Right Angle Cable Using RG174 Coax



PE3907

Connectors

Description	Connector 1	Connector 2
Type	SMA Male	SMB Plug Right Angle
Specification	MIL-STD-348A	MIL-STD-348A
Impedance	50 Ohms	50 Ohms
Configuration	Straight	Right Angle
Contact Material and Plating	Brass, Gold	Beryllium Copper, Gold
Contact Plating Specification	30µ in. Minimum	30 µin minimum
Dielectric Type	PTFE	PTFE
Outer Conductor Material and Plating		Brass, Nickel
Outer Conductor Plating Specification		100 µin minimum
Body Material and Plating	Brass, Nickel	Brass, Nickel
Body Plating Specification	100µ in. Minimum	100 µin minimum
Coupling Nut Material and Plating	Brass, Nickel	
Coupling Nut Plating Specification	100µ in. Minimum	
Hex Size	5/16 in	
Torque	5 in-lbs 0.57 Nm	

Environmental Specifications

Operating Range Temperature -40 to +80 deg C

Compliance Certifications (see [product page](#) for current document)

Plotted and Other Data

Notes:
Values at 25°C, sea level.

SMA Male to SMB Plug Right Angle Cable Using RG174 Coax



PE3907

Typical Performance Data

How to Order

Part Number Configuration:

PE3907

- xx

uu

Unit of Measure:
cm = Centimeters
<blank> = Inches

Length

Base Number

Example: PE3907-12 = 12 inches long cable
PE3907-100cm = 100 cm long cable

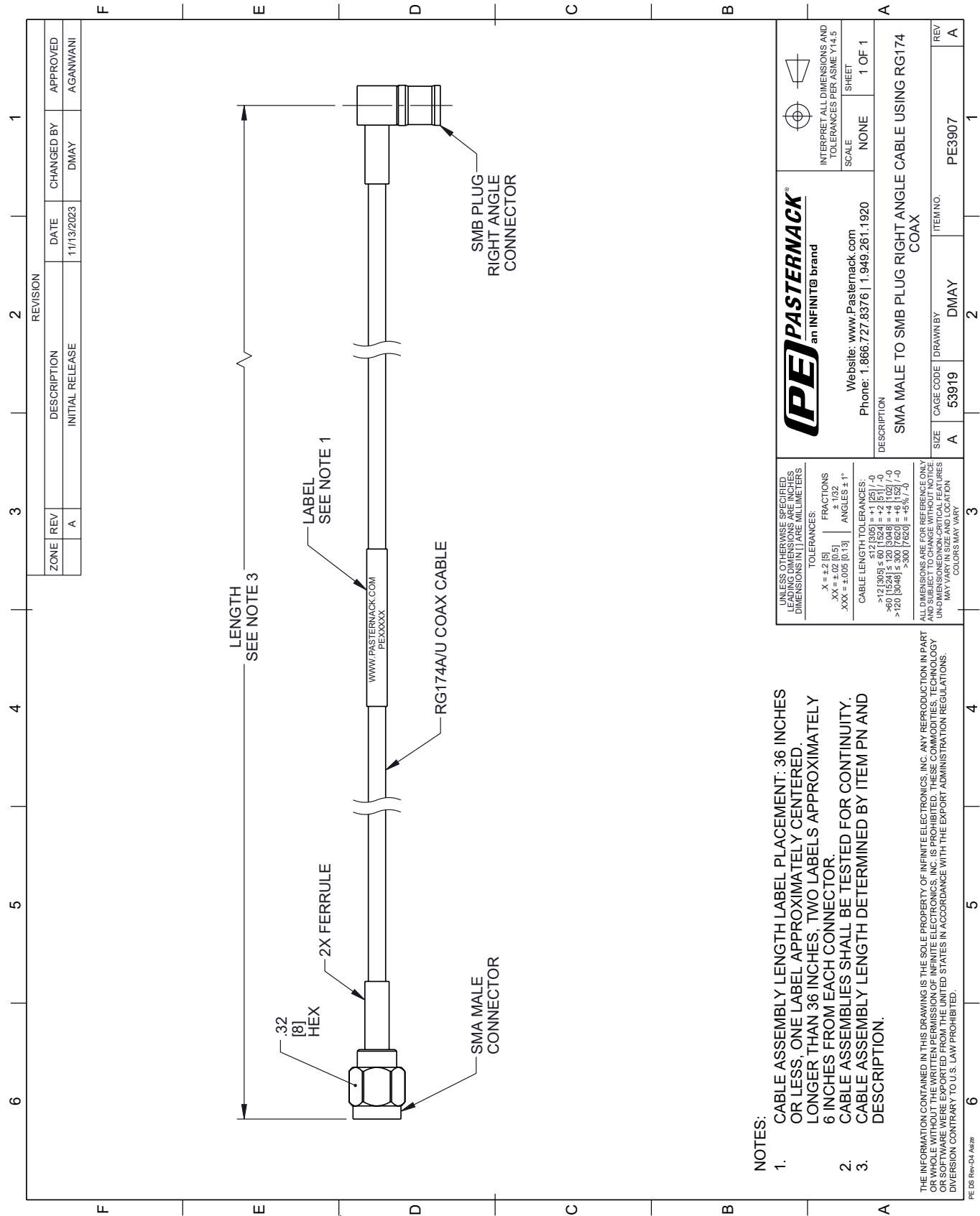
SMA Male to SMB Plug Right Angle Cable Using RG174 Coax from Pasternack Enterprises has same day shipment for domestic and International orders. Our RF, microwave and millimeter wave products maintain a 99.4% availability and are part of the broadest selection in the industry.

Click the following link (or enter part number in "SEARCH" on website) to obtain additional part information including price, inventory and certifications: [SMA Male to SMB Plug Right Angle Cable Using RG174 Coax PE3907](#)

URL: <https://www.pasternack.com/sma-male-to-smb-plug-cable-using-rg174-pe3907-p.aspx>

The information contained within this document is accurate to the best of our knowledge and representative of the part described herein. It may be necessary to make modifications to the part and/or the documentation of the part in order to implement improvements. Pasternack Enterprises reserves the right to make such changes as required. Unless otherwise stated, all specifications are nominal. Pasternack Enterprises does not make any representation or warranty regarding the suitability of the part described herein for any particular purpose, and Pasternack Enterprises does not assume liability arising out of the use of any part or document.

PE3907 CAD Drawing
SMA Male to SMB Plug Right Angle Cable Using RG174 Coax



- 1. CABLE ASSEMBLY LENGTH LABEL PLACEMENT: 36 INCHES OR LESS; ONE LABEL APPROXIMATELY CENTERED. LONGER THAN 36 INCHES, TWO LABELS APPROXIMATELY 6 INCHES FROM EACH CONNECTOR.
- 2. CABLE ASSEMBLIES SHALL BE TESTED FOR CONTINUITY.
- 3. CABLE ASSEMBLY LENGTH DETERMINED BY ITEM PN AND DESCRIPTION.