

SMP Female to SMA Male Right Angle Cable Using PE-SR405FL Coax

PE39132

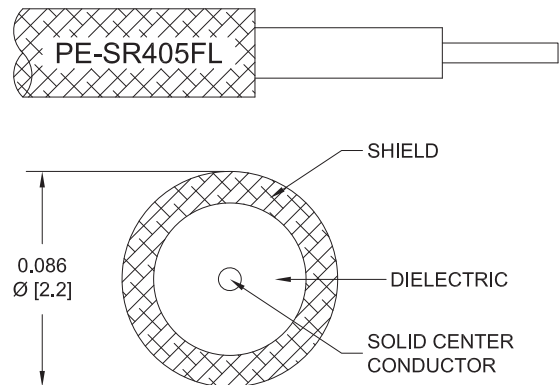


Configuration

- Connector 1: SMP Female
- Connector 2: SMA Male Right Angle
- Cable Type: PE-SR405FL
- Coax Flex Type: Formable

Features

- Max Frequency 10 GHz
- 69.5% Phase Velocity



Applications

- General Purpose
- Laboratory Use

Description

Pasternack's PE39132 SMP female to SMA male right angle cable using PE-SR405FL coax is part of our full line of RF components available for same-day shipping. Pasternack's formable RF cable assemblies provide an alternative to costly pre-formed semi-rigid assemblies since they are hand formable. This Pasternack SMP to SMA cable assembly has a female to male gender configuration with 50 ohm formable PE-SR405FL coax. The PE39132 SMP female to SMA male cable assembly operates to 10 GHz. The right angle SMA interface on the PE-SR405FL cable allows for easier connections in tight spaces.

Custom versions of most RF cable assemblies can be built and shipped same day. Custom cable assembly lengths can be obtained by specifying the desired length on the web site at time of order or by contacting a sales representative. Other available RF cable assembly value added services include connector orientation or clocking, heat shrink booting and custom labeling. RF testing can also be performed to document the electrical performance of your cable assembly.

Electrical Specifications

Description	Minimum	Typical	Maximum	Units
Frequency Range	DC		10	
VSWR			1.4:1	
Velocity of Propagation		69.5		%
Capacitance		29 [95.14]		pF/ft [pF/m]
DC Resistance Inner Conductor		65.7 [215.55]		Ohms/1000ft [Ohms/Km]
DC Resistance Outer Conductor		10.2 [33.46]		Ohms/1000ft [Ohms/Km]

Specifications by Frequency

SMP Female to SMA Male Right Angle Cable Using PE-SR405FL Coax



PE39132

Part Number	Length	Description	F1	F2	F3	F4	F5	Units	Weight (lbs)
		Frequency	500	1000	2500	5000	10000	MHz	
PE39132	Custom Lengths Available	Insertion Loss (Typ.)	0.15	0.22	0.34	0.54	0.81	dB/ft	
			0.5	0.73	1.12	1.78	2.66	dB/m	
PE39132-6	6 inch	Insertion Loss (Typ.)	0.38	0.41	0.47	0.57	0.71	dB	0.027
PE39132-9	9 inch	Insertion Loss (Typ.)	0.42	0.47	0.56	0.71	0.91	dB	0.03
PE39132-12	12 inch	Insertion Loss (Typ.)	0.45	0.52	0.64	0.84	1.11	dB	0.032
PE39132-24	24 inch	Insertion Loss (Typ.)	0.6	0.74	0.98	1.38	1.92	dB	0.044
PE39132-36	36 inch	Insertion Loss (Typ.)	0.75	0.96	1.32	1.92	2.73	dB	0.055

The insertion loss data for the base model does not include loss due to the connectors. Each length includes insertion loss due to the connectors.

Loss due to Connector 1: 0.1 dB
 Loss due to Connector 2: 0.2 dB
 Base Weight: 0.032 pounds
 Additional Weight per Inch: 0.00092 pounds

Mechanical Specifications

Cable Assembly

Weight 0.032 lbs [14.51 g]

Cable

Cable Type PE-SR405FL
 Impedance 50 Ohms
 Inner Conductor Type Solid
 Inner Conductor Material and Plating Copper Clad Steel, Silver
 Dielectric Type PTFE
 Number of Shields 1
 Outer Conductor 1 Material and Plating Copper, Tin
 Repeated Minimum Bend Radius 0.78 in [19.81 mm]

SMP Female to SMA Male Right Angle Cable Using PE-SR405FL Coax



PE39132

Connectors

Description	Connector 1	Connector 2
Type	SMP Female	SMA Male Right Angle
Specification	MIL-STD-348	MIL-STD-348A
Impedance	50 Ohms	50 Ohms
Configuration	Straight	Right Angle
Contact Material and Plating	Beryllium Copper, Gold	Brass, Gold
Contact Plating Specification	MIL-G-45204	50 µin minimum
Dielectric Type	PTFE	PTFE
Body Material and Plating	Beryllium Copper, Gold	Stainless Steel, Gold
Body Plating Specification	MIL-G-45204	30 µin minimum
Coupling Nut Material and Plating		Brass, Nickel
Coupling Nut Plating Specification		100 µin minimum
Hex Size		5/16 inch
Torque		3 in-lbs 0.34 Nm

Environmental Specifications

Compliance Certifications (see [product page](#) for current document)

Plotted and Other Data

Notes:

SMP Female to SMA Male Right Angle Cable Using PE-SR405FL Coax



PE39132

Typical Performance Data

How to Order

Part Number Configuration:

PE39132

- xx

uu

Unit of Measure:
cm = Centimeters
<blank> = Inches

Length

Base Number

Example: PE39132-12 = 12 inches long cable
PE39132-100cm = 100 cm long cable

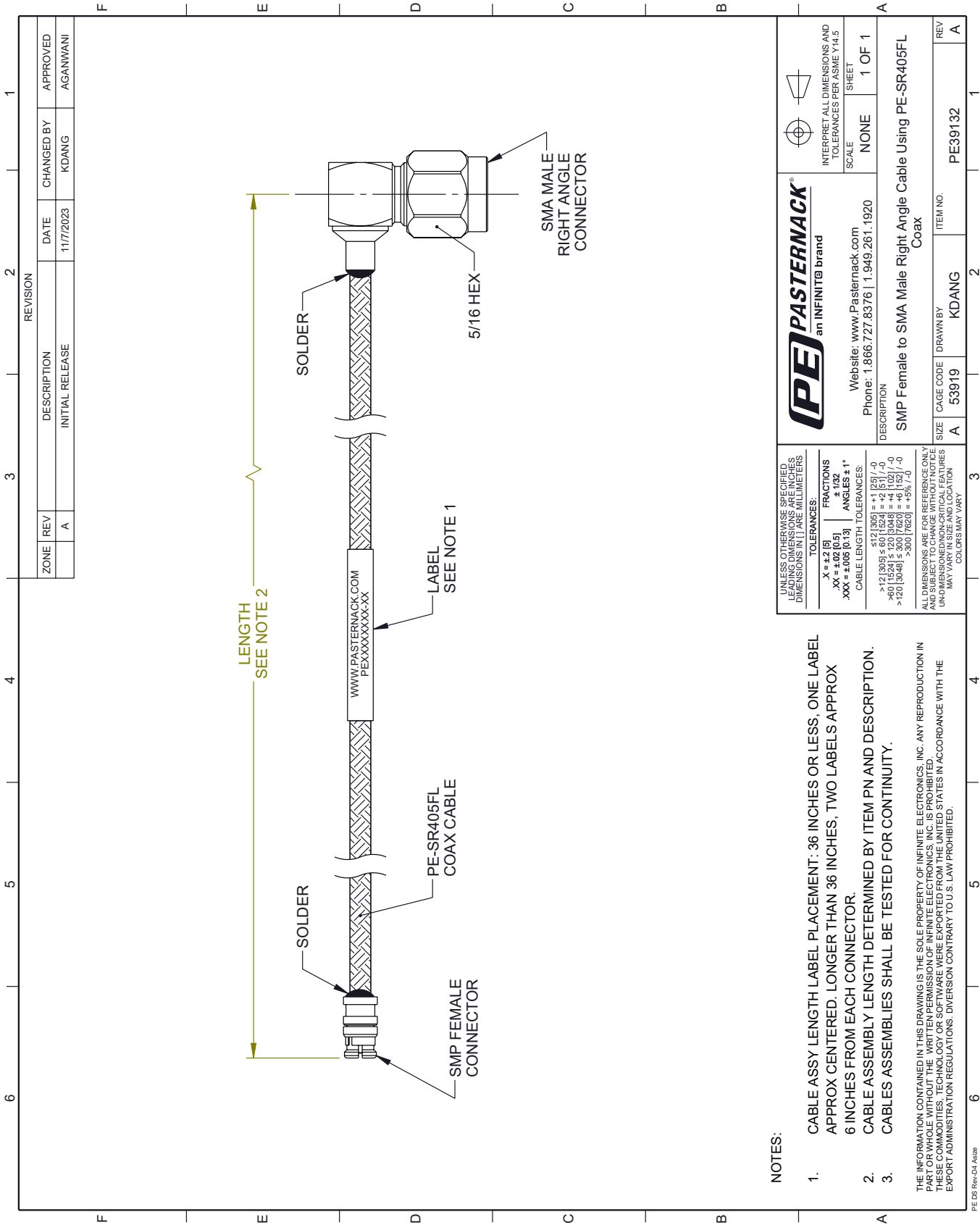
SMP Female to SMA Male Right Angle Cable Using PE-SR405FL Coax from Pasternack Enterprises has same day shipment for domestic and International orders. Our RF, microwave and millimeter wave products maintain a 99.4% availability and are part of the broadest selection in the industry.

Click the following link (or enter part number in "SEARCH" on website) to obtain additional part information including price, inventory and certifications: [SMP Female to SMA Male Right Angle Cable Using PE-SR405FL Coax PE39132](#)

URL: <https://www.pasternack.com/smp-female-to-sma-male-cable-using-pe-sr405fl-pe39132-p.aspx>

The information contained within this document is accurate to the best of our knowledge and representative of the part described herein. It may be necessary to make modifications to the part and/or the documentation of the part in order to implement improvements. Pasternack Enterprises reserves the right to make such changes as required. Unless otherwise stated, all specifications are nominal. Pasternack Enterprises does not make any representation or warranty regarding the suitability of the part described herein for any particular purpose, and Pasternack Enterprises does not assume liability arising out of the use of any part or document.

PE39132 CAD Drawing
SMP Female to SMA Male Right Angle Cable Using PE-SR405FL Coax



NOTES:

- 1. CABLE ASSY LENGTH LABEL PLACEMENT: 36 INCHES OR LESS, ONE LABEL APPROX CENTERED. LONGER THAN 36 INCHES, TWO LABELS APPROX 6 INCHES FROM EACH CONNECTOR.
- 2. CABLE ASSEMBLY LENGTH DETERMINED BY ITEM PN AND DESCRIPTION.
- 3. CABLES ASSEMBLIES SHALL BE TESTED FOR CONTINUITY.

UNLESS OTHERWISE SPECIFIED, LEADING DIMENSIONS ARE IN INCHES, DIMENSIONS IN [] ARE MILLIMETERS

TOLERANCES:	
.X = ±.2 [5]	FRACTIONS ± 1/32
.XX = ±.02 [0.5]	ANGLES ± 1°
.XXX = ±.005 [0.13]	
CABLE LENGTH TOLERANCES:	
≤ 12 [305] = ±.1 [2.5] / -0	
> 12 [305] ≤ 60 [1524] = ±.2 [5.1] / -0	
> 60 [1524] ≤ 120 [3048] = ±.4 [10.2] / -0	
> 120 [3048] ≤ 300 [7620] = ±.5% / -0	
> 300 [7620] = ±.5% / -0	

ALL DIMENSIONS ARE FOR REFERENCE ONLY. UNDIMENSIONED NON-CRITICAL FEATURES MAY VARY IN SIZE AND LOCATION. COLORS MAY VARY.

THE INFORMATION CONTAINED IN THIS DRAWING IS THE SOLE PROPERTY OF INFINITE ELECTRONICS, INC. ANY REPRODUCTION IN PART OR WHOLE WITHOUT THE WRITTEN PERMISSION OF INFINITE ELECTRONICS, INC. IS PROHIBITED. THESE COMMODITIES, TECHNOLOGY OR SOFTWARE WERE EXPORTED FROM THE UNITED STATES IN ACCORDANCE WITH THE EXPORT ADMINISTRATION REGULATIONS. DIVERSION CONTRARY TO U.S. LAW PROHIBITED.

PE DS Rev-Q4 Asize

PE PASTERNAK® an INFINITE brand

Website: www.Pasternack.com
Phone: 1.866.727.8376 | 1.949.261.1920

INTERPRET ALL DIMENSIONS AND TOLERANCES PER ASME Y14.5

SCALE NONE

SHEET 1 OF 1

DESCRIPTION SMP Female to SMA Male Right Angle Cable Using PE-SR405FL Coax

SIZE A	CAGE CODE 53919	DRAWN BY KDANG	ITEM NO. PE39132	REV A
--------	-----------------	----------------	------------------	-------