

QMA Male to QMA Male Cable Using RG142 Coax

PE39304

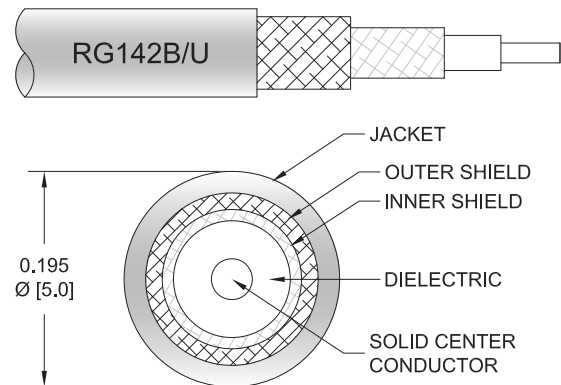


Configuration

- Connector 1: QMA Male
- Connector 2: QMA Male
- Cable Type: RG142
- Coax Flex Type: Flexible

Features

- Max Frequency 6 GHz
- Shielding Effectivity > 90 dB
- 69.2% Phase Velocity
- Double Shielded
- FEP Jacket



Applications

- General Purpose
- Laboratory Use

Description

Pasternack's PE39304 QMA male to QMA male cable using RG142 coax is part of our full line of RF components available for same-day shipping. Pasternack's flexible RF cable assemblies are ideal for applications where tight bends and flexure are required. This Pasternack QMA to QMA cable assembly has a male to male gender configuration with 50 ohm flexible RG142 coax. The PE39304 QMA male to QMA male cable assembly operates to 6 GHz. The double shielding of this Pasternack cable assembly provides excellent shielding effectiveness of better than 90 dB.

Custom versions of most RF cable assemblies can be built and shipped same day. Custom cable assembly lengths can be obtained by specifying the desired length on the web site at time of order or by contacting a sales representative. Other available RF cable assembly value added services include connector orientation or clocking, heat shrink booting and custom labeling. RF testing can also be performed to document the electrical performance of your cable assembly.

Electrical Specifications

Description	Minimum	Typical	Maximum	Units
Frequency Range	DC		6	GHz
VSWR			1.4:1	
Velocity of Propagation		69.2		%
RF Shielding	90			dB
Capacitance		29.4 [96.46]		pF/ft [pF/m]

Specifications by Frequency

QMA Male to QMA Male Cable Using RG142 Coax



PE39304

Part Number	Length	Description	F1	F2	F3	F4	F5	Units	Weight (lbs)
		Frequency	250	500	1000	2500	6000	MHz	
PE39304	Custom Lengths Available	Insertion Loss (Typ.)	0.059	0.087	0.129	0.212	0.385	dB/ft	
			0.2	0.29	0.43	0.7	1.27	dB/m	
PE39304-12	12 inch	Insertion Loss (Typ.)	0.26	0.29	0.33	0.42	0.59	dB	0.054
PE39304-24	24 inch	Insertion Loss (Typ.)	0.32	0.38	0.46	0.63	0.97	dB	0.096
PE39304-36	36 inch	Insertion Loss (Typ.)	0.38	0.47	0.59	0.84	1.36	dB	0.138
PE39304-48	48 inch	Insertion Loss (Typ.)	0.44	0.55	0.72	1.05	1.74	dB	0.18
PE39304-60	60 inch	Insertion Loss (Typ.)	0.5	0.64	0.85	1.26	2.13	dB	0.222

The insertion loss data for the base model does not include loss due to the connectors. Each length includes insertion loss due to the connectors.

Loss due to Connector 1: 0.1 dB
 Loss due to Connector 2: 0.1 dB
 Base Weight: 0.054 pounds
 Additional Weight per Inch: 0.0035 pounds

Mechanical Specifications

Cable Assembly

Weight 0.054 lbs [24.49 g]

Cable

Cable Type RG142
 Impedance 50 Ohms
 Inner Conductor Type Solid
 Inner Conductor Material and Plating Copper Clad Steel, Silver
 Dielectric Type PTFE
 Number of Shields 2
 Shield Layer 1 Silver Plated Copper Braid
 Shield Layer 2 Silver Plated Copper Braid
 Jacket Material FEP, Tan
 Jacket Diameter 0.195 in [4.95 mm]
 One Time Minimum Bend Radius 0.984 in [24.99 mm]
 Repeated Minimum Bend Radius 2 in [50.8 mm]

Connectors

Description	Connector 1	Connector 2
Type	QMA Male	QMA Male
Impedance	50 Ohms	50 Ohms
Configuration	Straight	Straight
Body Material and Plating	Brass, Nickel	Brass, Nickel

QMA Male to QMA Male Cable Using RG142 Coax



PE39304

Environmental Specifications

Compliance Certifications (see [product page](#) for current document)

Plotted and Other Data

Notes:

Values at 25°C, sea level.

Typical Performance Data

How to Order

Part Number Configuration:

PE39304

- XX

uu

- Unit of Measure:

cm = Centimeters

<blank> = Inches

- Length

- Base Number

Example: PE39304-12 = 12 inches long cable
PE39304-100cm = 100 cm long cable

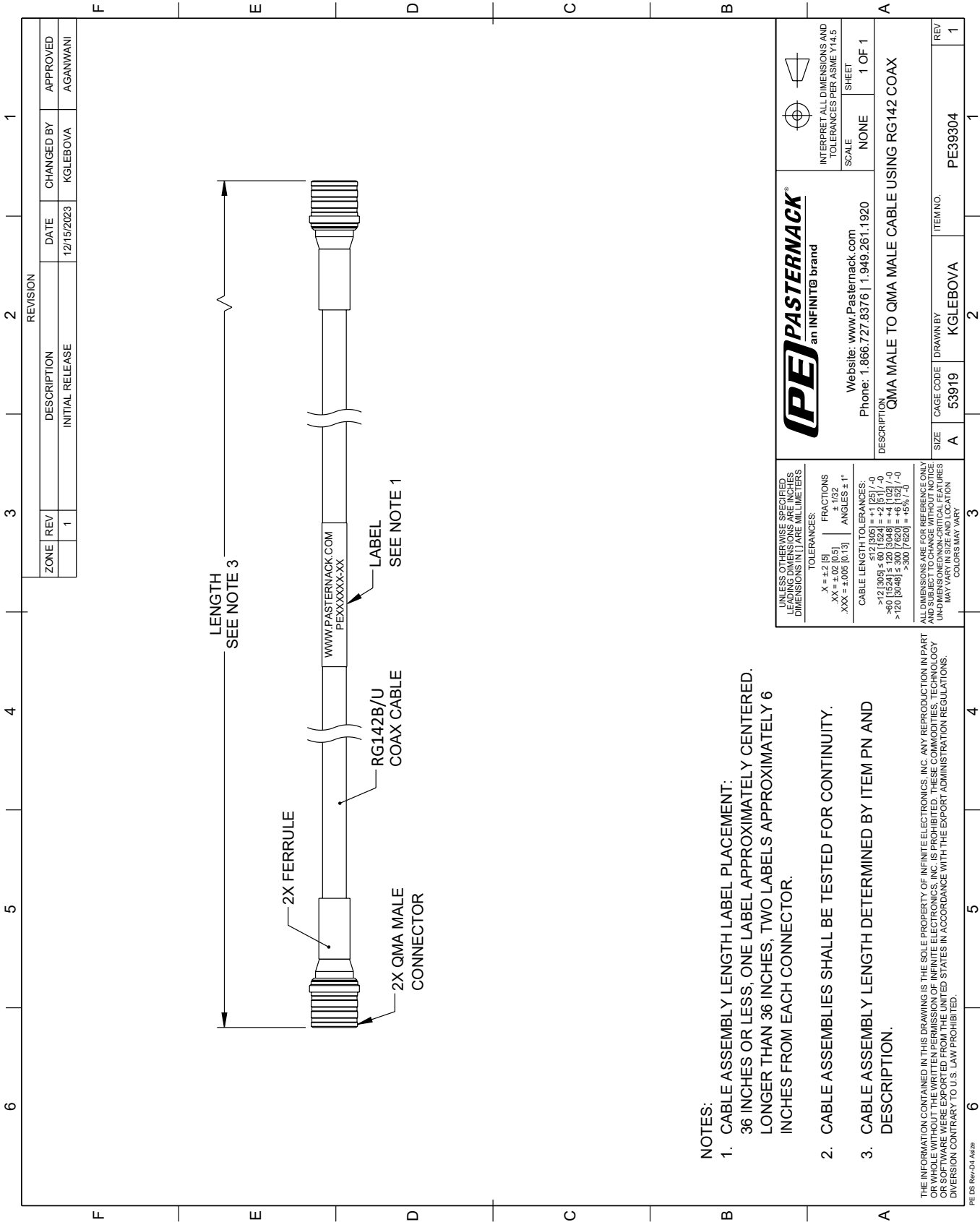
QMA Male to QMA Male Cable Using RG142 Coax from Pasternack Enterprises has same day shipment for domestic and International orders. Our RF, microwave and millimeter wave products maintain a 99.4% availability and are part of the broadest selection in the industry.

Click the following link (or enter part number in "SEARCH" on website) to obtain additional part information including price, inventory and certifications: [QMA Male to QMA Male Cable Using RG142 Coax PE39304](#)

URL: <https://www.pasternack.com/qma-male-to-qma-male-cable-using-rg142-pe39304-p.aspx>

The information contained within this document is accurate to the best of our knowledge and representative of the part described herein. It may be necessary to make modifications to the part and/or the documentation of the part in order to implement improvements. Pasternack Enterprises reserves the right to make such changes as required. Unless otherwise stated, all specifications are nominal. Pasternack Enterprises does not make any representation or warranty regarding the suitability of the part described herein for any particular purpose, and Pasternack Enterprises does not assume liability arising out of the use of any part or document.

PE39304 CAD Drawing
QMA Male to QMA Male Cable Using RG142 Coax



- NOTES:
- 1. CABLE ASSEMBLY LENGTH LABEL PLACEMENT: 36 INCHES OR LESS, ONE LABEL APPROXIMATELY CENTERED. LONGER THAN 36 INCHES, TWO LABELS APPROXIMATELY 6 INCHES FROM EACH CONNECTOR.
 - 2. CABLE ASSEMBLIES SHALL BE TESTED FOR CONTINUITY.
 - 3. CABLE ASSEMBLY LENGTH DETERMINED BY ITEM PN AND DESCRIPTION.

THE INFORMATION CONTAINED IN THIS DRAWING IS THE SOLE PROPERTY OF INFINITE ELECTRONICS, INC. ANY REPRODUCTION IN PART OR WHOLE WITHOUT THE WRITTEN PERMISSION OF INFINITE ELECTRONICS, INC. IS PROHIBITED. THESE COMMODITIES, TECHNOLOGY OR SOFTWARE WERE EXPORTED FROM THE UNITED STATES IN ACCORDANCE WITH THE EXPORT ADMINISTRATION REGULATIONS. DIVISION CONTRARY TO U.S. LAW PROHIBITED.

PE DS Rev-D4 Adda