

## SMA Male Right Angle to SMA Male Right Angle Cable Using PE-SR402FLJ Coax with 90 Deg. Clock



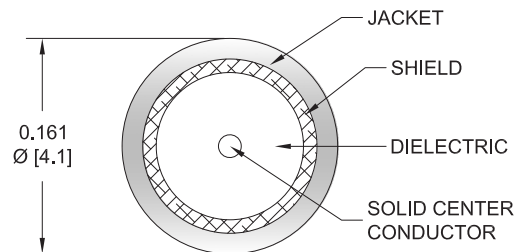
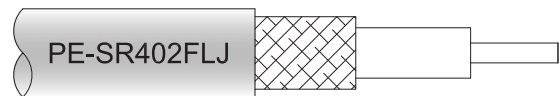
### PE39438/PH90

#### Configuration

- Connector 1: SMA Male Right Angle
- Connector 2: SMA Male Right Angle
- Cable Type: PE-SR402FLJ
- Coax Flex Type: Formable

#### Features

- Max Frequency 10 GHz
- Shielding Effectivity > 100 dB
- 70% Phase Velocity
- FEP Jacket



#### Applications

- General Purpose
- Laboratory Use

#### Description

Pasternack's PE39438/PH90 SMA male right angle to SMA male right angle cable using PE-SR402FLJ coax is part of our full line of RF components available for same-day shipping. Pasternack's formable RF cable assemblies provide an alternative to costly pre-formed semi-rigid assemblies since they are hand formable. This Pasternack SMA to SMA cable assembly has a male to male gender configuration with 50 ohm formable PE-SR402FLJ coax. The PE39438/PH90 SMA male to SMA male cable assembly operates to 10 GHz. The right angle SMA interfaces on the PE-SR402FLJ cable allow for easier connections in tight spaces.

Custom versions of most RF cable assemblies can be built and shipped same day. Custom cable assembly lengths can be obtained by specifying the desired length on the web site at time of order or by contacting a sales representative. Other available RF cable assembly value added services include connector orientation or clocking, heat shrink booting and custom labeling. RF testing can also be performed to document the electrical performance of your cable assembly.

#### Electrical Specifications

Description	Minimum	Typical	Maximum	Units
Frequency Range	DC		10	GHz
VSWR			1.4:1	
Velocity of Propagation		70		%
RF Shielding	100			dB
Group Delay		1.43 [4.69]		ns/ft [ns/m]
Capacitance		29 [95.14]		pF/ft [pF/m]
DC Resistance Inner Conductor		8.23 [27]		Ohms/1000ft [Ohms/Km]

#### Specifications by Frequency

SMA Male Right Angle to SMA Male Right Angle Cable  
Using PE-SR402FLJ Coax with 90 Deg. Clock



**PE39438/PH90**

Part Number	Length	Description	F1	F2	F3	F4	F5	Units	Weight (lbs)
			Frequency		500	1000	2500	5000	
PE39438/PH90	Custom Lengths Available	Insertion Loss (Typ.)	0.082	0.125	0.198	0.32	0.482	dB/ft	
			0.27	0.42	0.65	1.05	1.59	dB/m	
PE39438/PH90-6	6 In	Insertion Loss (Typ.)	0.45	0.47	0.5	0.56	0.65	dB	0.025
PE39438/PH90-9	9 In	Insertion Loss (Typ.)	0.47	0.5	0.55	0.64	0.77	dB	0.032
PE39438/PH90-12	12 In	Insertion Loss (Typ.)	0.49	0.53	0.6	0.72	0.89	dB	0.039
PE39438/PH90-18	18 In	Insertion Loss (Typ.)	0.53	0.59	0.7	0.88	1.13	dB	0.054
PE39438/PH90-24	24 In	Insertion Loss (Typ.)	0.57	0.65	0.8	1.04	1.37	dB	0.069

The insertion loss data for the base model does not include loss due to the connectors. Each length includes insertion loss due to the connectors.

Loss due to Connector 1: 0.2 dB  
 Loss due to Connector 2: 0.2 dB  
 Base Weight: 0.039 pounds  
 Additional Weight per Inch: 0.00242 pounds

**Mechanical Specifications**

**Cable Assembly**

Width/Diameter 0.5 in [12.7 mm]  
 Weight 0.01 lbs [4.54 g]

**Cable**

Cable Type PE-SR402FLJ  
 Impedance 50 Ohms  
 Inner Conductor Type Solid  
 Inner Conductor Material and Plating Copper, Silver  
 Dielectric Type PTFE  
 Outer Conductor 1 Material and Plating Tinned Copper Braid  
 Jacket Material FEP, Black  
 Jacket Diameter 0.161 in [4.09 mm]  
 One Time Minimum Bend Radius 0.315 in [8 mm]  
 Repeated Minimum Bend Radius 1.575 in [40.01 mm]

SMA Male Right Angle to SMA Male Right Angle Cable  
Using PE-SR402FLJ Coax with 90 Deg. Clock



**PE39438/PH90**

**Connectors**

Description	Connector 1	Connector 2
Type	SMA Male Right Angle	SMA Male Right Angle
Impedance	50 Ohms	50 Ohms
Configuration	Right Angle	Right Angle
Contact Material and Plating	Brass, Gold over Nickel	Brass, Gold over Nickel
Dielectric Type	PTFE	PTFE
Body Material and Plating	Brass, Gold over Nickel	Brass, Gold over Nickel
Coupling Nut Material and Plating	Passivated Stainless Steel	Passivated Stainless Steel
Hex Size	5/16 inch	5/16 inch
Torque	8 in-lbs 0.9 Nm	8 in-lbs 0.9 Nm

**Environmental Specifications**

**Compliance Certifications** (see [product page](#) for current document)

**Plotted and Other Data**

Notes:

## SMA Male Right Angle to SMA Male Right Angle Cable Using PE-SR402FLJ Coax with 90 Deg. Clock



### PE39438/PH90

#### Typical Performance Data

#### How to Order

Part Number Configuration:

**PE39438/PH90**

- **xx**

**uu**

Unit of Measure:

cm = Centimeters

<blank> = Inches

Length

Base Number

Example: PE39438/PH90-12 = 12 inches long cable  
PE39438/PH90-100cm = 100 cm long cable

SMA Male Right Angle to SMA Male Right Angle Cable Using PE-SR402FLJ Coax with 90 Deg. Clock from Pasternack Enterprises has same day shipment for domestic and International orders. Our RF, microwave and millimeter wave products maintain a 99.4% availability and are part of the broadest selection in the industry.

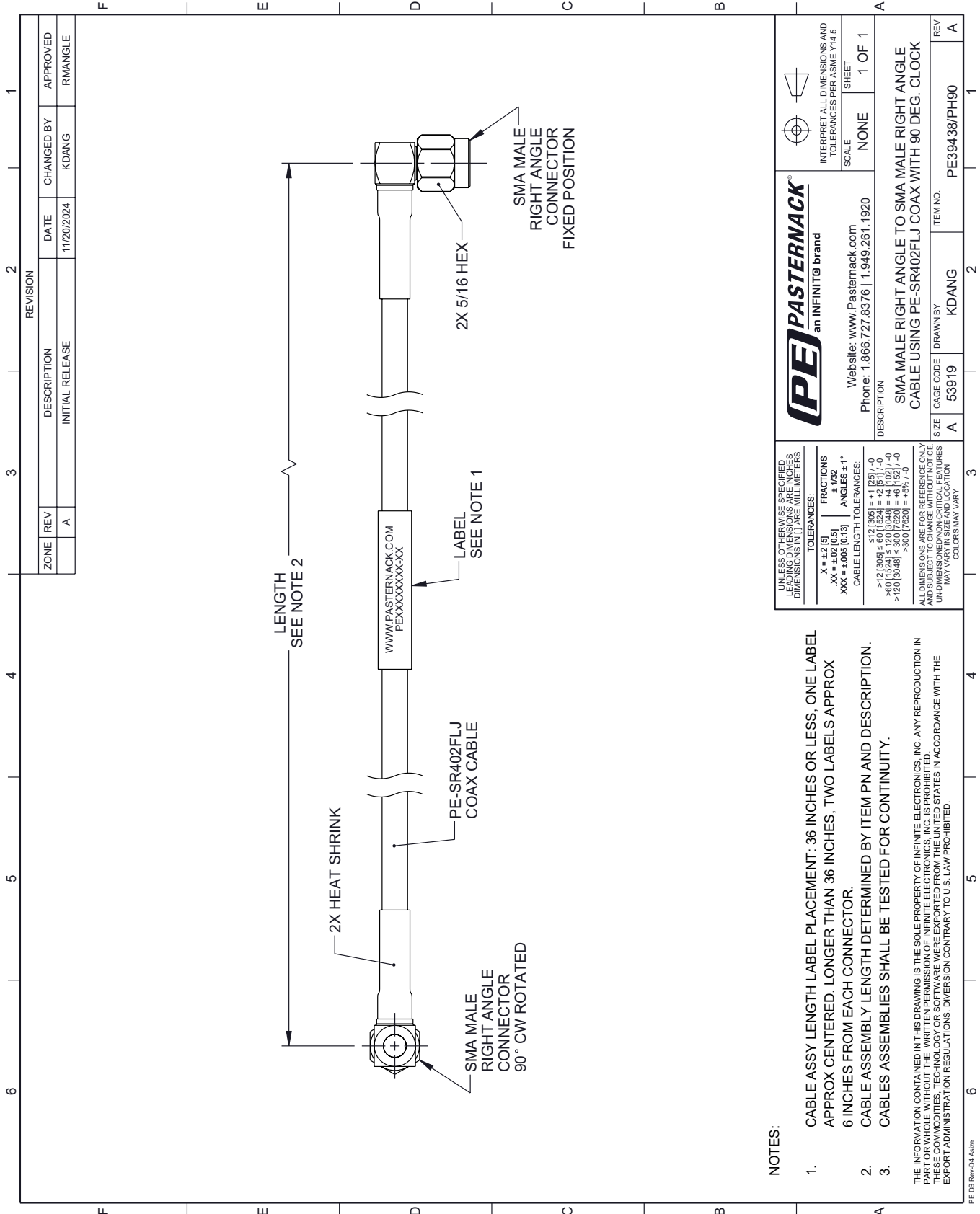
Click the following link (or enter part number in "SEARCH" on website) to obtain additional part information including price, inventory and certifications: [SMA Male Right Angle to SMA Male Right Angle Cable Using PE-SR402FLJ Coax with 90 Deg. Clock PE39438/PH90](#)

URL: <https://www.pasternack.com/sma-male-right-angle-to-sma-male-cable-using-pe-sr402flj-with-90-deg.-clock-pe39438-ph90-p.aspx>

The information contained within this document is accurate to the best of our knowledge and representative of the part described herein. It may be necessary to make modifications to the part and/or the documentation of the part in order to implement improvements. Pasternack Enterprises reserves the right to make such changes as required. Unless otherwise stated, all specifications are nominal. Pasternack Enterprises does not make any representation or warranty regarding the suitability of the part described herein for any particular purpose, and Pasternack Enterprises does not assume liability arising out of the use of any part or document.

# PE39438/PH90 CAD Drawing

SMA Male Right Angle to SMA Male Right Angle Cable Using PE-SR402FLJ Coax with 90 Deg. Clock



REVISION		DATE	CHANGED BY	APPROVED
ZONE	REV			
	A	11/20/2024	KDANG	RMANGLE
DESCRIPTION				
INITIAL RELEASE				

**UNLESS OTHERWISE SPECIFIED LEADING DIMENSIONS ARE IN INCHES DIMENSIONS IN [ ] ARE MILLIMETERS**

**TOLERANCES:**  
 .X = ±.2 [5]  
 .XX = ±.02 [0.5]  
 .XXX = ±.005 [0.13]

**FRACTIONS**  
 ± 1/32

**ANGLES ± 1°**

**CABLE LENGTH TOLERANCES:**  
 <12 [305] ±.60 [1524] = +2 [51] / -0  
 >12 [305] ±.60 [1524] = +4 [102] / -0  
 >20 [508] ±.30 [762] = +5% / -0

**ALL DIMENSIONS ARE FOR REFERENCE ONLY UNLESS OTHERWISE NOTED. DIMENSIONS IN NON-CRITICAL FEATURES MAY VARY IN SIZE AND LOCATION COLORS MAY VARY**

**PE PASTERNAK®**  
 an INFINITE brand

Website: www.Pasternack.com  
 Phone: 1.866.727.8376 | 1.949.261.1920

INTERPRET ALL DIMENSIONS AND TOLERANCES PER ASME Y14.5

SCALE NONE SHEET 1 OF 1

DESCRIPTION  
 SMA MALE RIGHT ANGLE TO SMA MALE RIGHT ANGLE CABLE USING PE-SR402FLJ COAX WITH 90 DEG. CLOCK

SIZE A CAGE CODE 53919 DRAWN BY KDANG ITEM NO. PE39438/PH90 REV A

- NOTES:**
- CABLE ASSY LENGTH LABEL PLACEMENT: .36 INCHES OR LESS, ONE LABEL APPROX CENTERED. LONGER THAN .36 INCHES, TWO LABELS APPROX .6 INCHES FROM EACH CONNECTOR.
  - CABLE ASSEMBLY LENGTH DETERMINED BY ITEM PN AND DESCRIPTION. CABLE ASSEMBLIES SHALL BE TESTED FOR CONTINUITY.
  -
- THE INFORMATION CONTAINED IN THIS DRAWING IS THE SOLE PROPERTY OF INFINITE ELECTRONICS, INC. ANY REPRODUCTION IN PART OR WHOLE WITHOUT THE WRITTEN PERMISSION OF INFINITE ELECTRONICS, INC. IS PROHIBITED. THESE COMMODITIES, TECHNOLOGY OR SOFTWARE WERE EXPORTED FROM THE UNITED STATES IN ACCORDANCE WITH THE EXPORT ADMINISTRATION REGULATIONS. DIVERSION CONTRARY TO U.S. LAW PROHIBITED.
- PE DS Rev-D4 A4326