



## SMA Male Right Angle to SMA Male Right Angle Cable Using RG316-DS Coax with HeatShrink and 180 Deg. Clock, LF Solder

### RF Cable Assemblies Technical Data Sheet

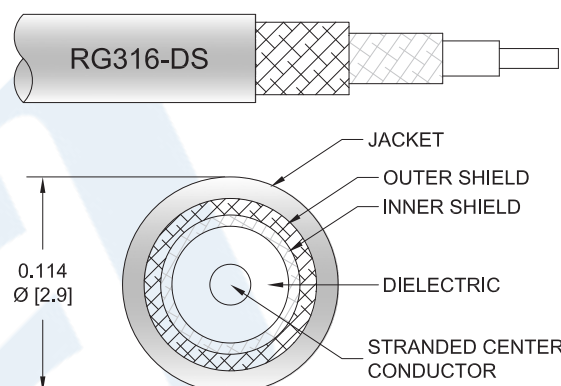
**PE3987/SP**

#### Configuration

- Connector 1: SMA Male Right Angle
- Connector 2: SMA Male Right Angle
- Cable Type: RG316-DS

#### Features

- Max Frequency 3 GHz
- 70% Phase Velocity
- Double Shielded
- FEP Jacket



#### Applications

- General Purpose
- Laboratory Use

#### Description

Pasternack's PE3987/SP SMA male right angle to SMA male right angle cable using RG316-DS coax is part of our full line of RF components available for same-day shipping. Pasternack's flexible RF cable assemblies are ideal for applications where tight bends and flexure are required. This Pasternack SMA to SMA cable assembly has a male to male gender configuration with 50 ohm flexible RG316-DS coax. The PE3987/SP SMA male to SMA male cable assembly operates to 3 GHz. The right angle SMA interfaces on the RG316-DS cable allow for easier connections in tight spaces. The double shielding of this Pasternack cable assembly provides excellent shielding effectiveness.

Custom versions of most RF cable assemblies can be built and shipped same day. Custom cable assembly lengths can be obtained by specifying the desired length on the web site at time of order or by contacting a sales representative. Other available RF cable assembly value added services include connector orientation or clocking, heat shrink booting and custom labeling. RF testing can also be performed to document the electrical performance of your cable assembly.

Click the following link (or enter part number in "SEARCH" on website) to obtain additional part information including price, inventory and certifications: [SMA Male Right Angle to SMA Male Right Angle Cable Using RG316-DS Coax with Heat-Shrink and 180 Deg. Clock, LF Solder PE3987/SP](#)



SMA Male Right Angle to SMA Male Right Angle Cable Using  
RG316-DS Coax with HeatShrink and 180 Deg. Clock, LF Solder

## RF Cable Assemblies Technical Data Sheet

**PE3987/SP**

### Electrical Specifications

Description	Minimum	Typical	Maximum	Units
Frequency Range	DC		3	GHz
VSWR			1.4:1	
Velocity of Propagation		70		%
Capacitance		29.4 [96.46]		pF/ft [pF/m]
Operating Voltage (AC)			335	Vrms

### Specifications by Frequency

Description	F1	F2	F3	F4	F5	Units
Frequency	0.1	0.25	0.5	1	3	GHz
Insertion Loss (Typ.)	0.082	0.128	0.194	0.29	0.535	dB/ft
	0.27	0.42	0.64	0.95	1.76	dB/m

#### Electrical Specification Notes:

Insertion Loss does not include the loss of the connectors. Insertion Loss is estimated as 0.2 dB per connector.

### Mechanical Specifications

#### Cable Assembly

Weight 0.049 lbs [22.23 g]

#### Cable

Cable Type RG316-DS  
Impedance 50 Ohms  
Inner Conductor Type Stranded  
Inner Conductor Material and Plating Copper Clad Steel, Silver  
Dielectric Type PTFE  
Number of Shields 2  
Shield Layer 1 Silver Plated Copper Braid  
Shield Layer 2 Silver Plated Copper Braid  
Jacket Material FEP, Tan  
Jacket Diameter 0.114 in [2.9 mm]  
  
One Time Minimum Bend Radius 0.59 in [14.99 mm]

Click the following link (or enter part number in "SEARCH" on website) to obtain additional part information including price, inventory and certifications: [SMA Male Right Angle to SMA Male Right Angle Cable Using RG316-DS Coax with Heat-Shrink and 180 Deg. Clock, LF Solder PE3987/SP](#)



SMA Male Right Angle to SMA Male Right Angle Cable Using  
RG316-DS Coax with HeatShrink and 180 Deg. Clock, LF Solder

## RF Cable Assemblies Technical Data Sheet

**PE3987/SP**

### Connectors

Description	Connector 1	Connector 2
Type	SMA Male Right Angle	SMA Male Right Angle
Specification	MIL-STD-348A	MIL-STD-348A
Impedance	50 Ohms	50 Ohms
Contact Material and Plating	Brass, Gold	Brass, Gold
Contact Plating Specification	50μ in. minimum	50μ in. minimum
Dielectric Type	Teflon	Teflon
Body Material and Plating	Brass, Nickel	Brass, Nickel
Body Plating Specification	100μ in. minimum	100μ in. minimum
Coupling Nut Material and Plating	Brass, Nickel	Brass, Nickel
Coupling Nut Plating Specification	100μ in. minimum	100μ in. minimum
Hex Size	5/16 in	5/16 in
Torque	5 in-lbs [0.57 Nm]	5 in-lbs [0.57 Nm]

**Compliance Certifications** (see [product page](#) for current document)

### Plotted and Other Data

Notes:

- Values at 25°C, sea level.

Click the following link (or enter part number in "SEARCH" on website) to obtain additional part information including price, inventory and certifications: [SMA Male Right Angle to SMA Male Right Angle Cable Using RG316-DS Coax with Heat-Shrink and 180 Deg. Clock, LF Solder PE3987/SP](#)



## SMA Male Right Angle to SMA Male Right Angle Cable Using RG316-DS Coax with HeatShrink and 180 Deg. Clock, LF Solder

### RF Cable Assemblies Technical Data Sheet

**PE3987/SP**

#### How to Order

Part Number Configuration:

**PE3987/SP**

**- xx**

**uu**

Unit of Measure:  
cm = Centimeters  
<blank> = Inches  
Length  
Base Number

Example: PE3987/SP-12 = 12 inches long cable  
PE3987/SP-100cm = 100 cm long cable

SMA Male Right Angle to SMA Male Right Angle Cable Using RG316-DS Coax with HeatShrink and 180 Deg. Clock, LF Solder from Pasternack Enterprises has same day shipment for domestic and International orders. Our RF, microwave and millimeter wave products maintain a 99.4% availability and are part of the broadest selection in the industry.

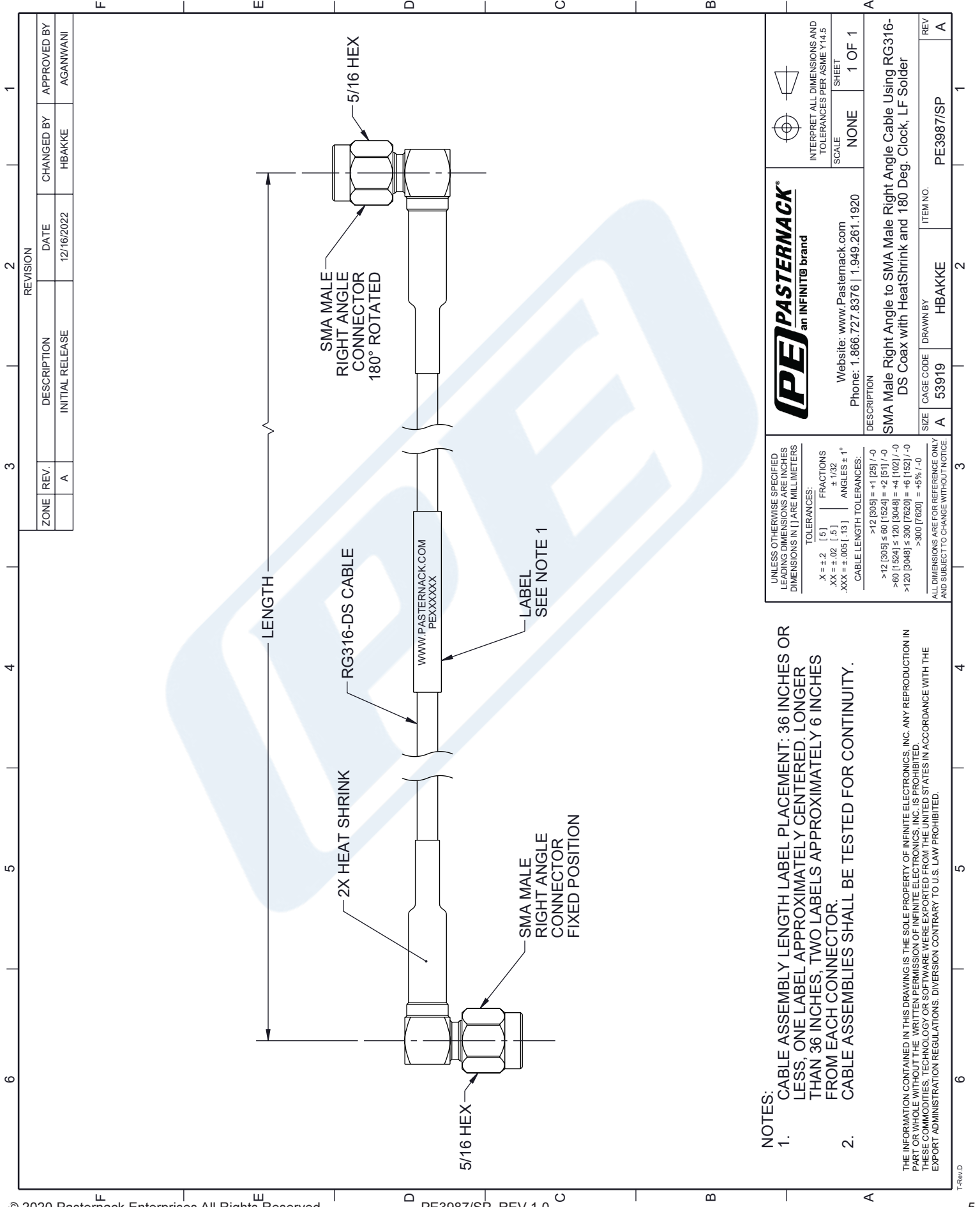
Click the following link (or enter part number in "SEARCH" on website) to obtain additional part information including price, inventory and certifications: [SMA Male Right Angle to SMA Male Right Angle Cable Using RG316-DS Coax with HeatShrink and 180 Deg. Clock, LF Solder PE3987/SP](https://www.pasternack.com/sma-male-right-angle-to-sma-male-cable-using-rg316-ds-with-heatshrink-and-180-deg.-clock-lf-solder-pe3987-sp-p.aspx)

URL: <https://www.pasternack.com/sma-male-right-angle-to-sma-male-cable-using-rg316-ds-with-heatshrink-and-180-deg.-clock-lf-solder-pe3987-sp-p.aspx>

The information contained in this document is accurate to the best of our knowledge and representative of the part described herein. It may be necessary to make modifications to the part and/or the documentation of the part, in order to implement improvements. Pasternack reserves the right to make such changes as required. Unless otherwise stated, all specifications are nominal. Pasternack does not make any representation or warranty regarding the suitability of the part described herein for any particular purpose, and Pasternack does not assume any liability arising out of the use of any part or documentation.

# PE3987/SP CAD Drawing

SMA Male Right Angle to SMA Male Right Angle Cable Using RG316-DS Coax with HeatShrink and 180 Deg. Clock, LF Solder



## NOTES:

1. CABLE ASSEMBLY LENGTH LABEL PLACEMENT: 36 INCHES OR LESS, ONE LABEL APPROXIMATELY CENTERED. LONGER THAN 36 INCHES, TWO LABELS APPROXIMATELY 6 INCHES FROM EACH CONNECTOR.
2. CABLE ASSEMBLIES SHALL BE TESTED FOR CONTINUITY.

THE INFORMATION CONTAINED IN THIS DRAWING IS THE SOLE PROPERTY OF INFINITE ELECTRONICS, INC. ANY REPRODUCTION IN PART OR WHOLE WITHOUT THE WRITTEN PERMISSION OF INFINITE ELECTRONICS, INC. IS PROHIBITED. THESE COMMODITIES, TECHNOLOGY OR SOFTWARE WERE EXPORTED FROM THE UNITED STATES IN ACCORDANCE WITH THE EXPORT ADMINISTRATION REGULATIONS. DIVERSION CONTRARY TO U.S. LAW PROHIBITED.

<b>PE PASTERNAK</b> an INFINITE brand		
Website: <a href="http://www.Pasternack.com">www.Pasternack.com</a> Phone: 1.866.727.8376   1.949.261.1920	SCALE NONE	SHEET 1 OF 1
DESCRIPTION SMA Male Right Angle to SMA Male Right Angle Cable Using RG316-DS Coax with HeatShrink and 180 Deg. Clock, LF Solder		
SIZE A 53919	DRAWN BY HBAKKE	ITEM NO. PE3987/SP
REV A		1

UNLESS OTHERWISE SPECIFIED LEADING DIMENSIONS ARE INCHES DIMENSIONS IN [ ] ARE MILLIMETERS	TOLERANCES: X = ±.2 [5] XX = ±.02 [.5] .XXX = ±.005 [.13]	FRACTIONS ± 1/32 ANGLES ± 1°
CABLE LENGTH TOLERANCES: >12 [305] = +1 [25] / -0 >60 [1524] = +2 [51] / -0 >120 [3048] = +4 [102] / -0 >240 [6096] = +6 [152] / -0 >300 [7620] = +5% / -0		
ALL DIMENSIONS ARE FOR REFERENCE ONLY AND SUBJECT TO CHANGE WITHOUT NOTICE		