

Waterproof IP68 SMA Male (Plug) to SMA Male (Plug) Low Loss Cable Using LMR-195 Coax



PE3C0038/WP

Configuration

- Connector 1: SMA Male
- Connector 2: SMA Male
- Cable Type: LMR-195
- Coax Flex Type: Flexible

Features

- Max Frequency 6 GHz
- Shielding Effectivity > 90 dB
- 80% Phase Velocity
- Double Shielded
- PE Jacket
- Silicone Connector Boot
- IP68 Rated

Applications

- General Purpose
- Laboratory Use

Description

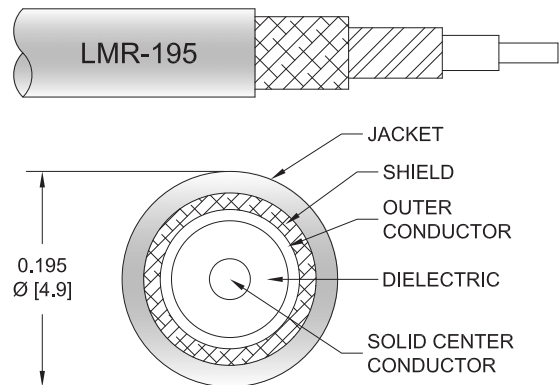
The Pasternack PE3C0038/WP is a weatherproof low loss cable assembly that comes with SMA male connection with weatherproof boot on one end and SMA male with weatherproof boot on the other. Pasternack's RF coaxial cable assembly products are designed for typical use, production, laboratory test and measurement, defense/military, aerial antenna towers, etc. The low loss cable has a 50 Ohm impedance and is specifically ready for quicker shipment than most in the industry can provide.

This weatherproof low loss RF cable assembly operates at a maximum frequency of 6 GHz. Our RF cable assembly has a PE jacket with 0.195 inches diameter. The SMA male to SMA male cable assembly PE3C0038/WP is built with LMR-195 coax, which has a flexible design. This RF cable assembly with 0.5 inches diameter has copper as cable's inner conducting material and PE (F) dielectric type. The weatherproof boot low loss cable can operate at a temperature range of -40 to 85 degrees C. Additional dimensions, specifications, and CAD drawings for this PE3C0038/WP low loss RF cable are available on our downloadable PDF datasheet.

Pasternack stocks a wide selection of weatherproof low loss cable assemblies that ship the same business day as ordered from our warehouse. Make your online purchase right now to take advantage of our same-day shipping. For further information on similar products, our expert technical support and knowledgeable sales team can help you get the ideal SMA male to SMA male cable assembly as per your requirements.

Electrical Specifications

Description	Minimum	Typical	Maximum	Units
Frequency Range	DC		6	GHz
VSWR			1.4:1	
Velocity of Propagation		80		%
RF Shielding	90			dB
Capacitance		25.4 [83.33]		pF/ft [pF/m]
Inductance		0.064 [0.21]		uH/ft [uH/m]
DC Resistance Inner Conductor		7.6 [24.93]		Ohms/1000ft [Ohms/Km]



Waterproof IP68 SMA Male (Plug) to SMA Male (Plug) Low Loss Cable Using LMR-195 Coax



PE3C0038/WP

Electrical Specifications

Description	Minimum	Typical	Maximum	Units
DC Resistance Outer Conductor		4.9 [16.08]		Ohms/1000ft [Ohms/Km]
Dielectric Withstanding Voltage (DC)			1,000	Vdc
Jacket Spark			3,000	Vrms

Specifications by Frequency

Part Number	Length	Description	F1	F2	F3	F4	F5	Units	Weight (lbs)
			Frequency		250	500	1000	2500	
PE3C0038/WP	Custom Lengths Available	Insertion Loss (Typ.)	0.057	0.081	0.116	0.19	0.299	dB/ft	
			0.19	0.27	0.39	0.63	0.99	dB/m	
PE3C0038/WP-12	12 Inch	Insertion Loss (Typ.)	0.26	0.29	0.32	0.39	0.5	dB	1.054
PE3C0038/WP-24	24 Inch	Insertion Loss (Typ.)	0.32	0.37	0.44	0.58	0.8	dB	1.076
PE3C0038/WP-36	36 Inch	Insertion Loss (Typ.)	0.38	0.45	0.55	0.77	1.1	dB	1.098
PE3C0038/WP-48	48 Inch	Insertion Loss (Typ.)	0.43	0.53	0.67	0.96	1.4	dB	1.12
PE3C0038/WP-60	60 Inch	Insertion Loss (Typ.)	0.49	0.61	0.78	1.15	1.7	dB	1.142

The insertion loss data for the base model does not include loss due to the connectors. Each length includes insertion loss due to the connectors.

Loss due to Connector 1:	0.1 dB
Loss due to Connector 2:	0.1 dB
Base Weight:	1.054 pounds
Additional Weight per Inch:	0.00183 pounds

Electrical Specification Notes:
Values at 25°C, sea level.

Mechanical Specifications

Cable Assembly

Width/Diameter	0.5 in [12.7 mm]
Weight	1.054 lbs [478.09 g]

Cable

Cable Type	LMR-195
Impedance	50 Ohms
Inner Conductor Type	Solid
Inner Conductor Material and Plating	Copper
Dielectric Type	PE (F)
Number of Shields	2
Shield Layer 1	Aluminum Tape
Shield Layer 2	Tinned Copper Braid
Jacket Material	PE
Jacket Diameter	0.195 in [4.95 mm]
One Time Minimum Bend Radius	0.5 in [12.7 mm]
Repeated Minimum Bend Radius	2 in [50.8 mm]
Bending Moment	0.2 lbs-ft [0.27 N-m]

Waterproof IP68 SMA Male (Plug) to SMA Male (Plug) Low Loss Cable Using LMR-195 Coax



PE3C0038/WP

Flat Plate Crush	15 lbs/in [0.27 Kg/mm]
Tensile Strength	40 lbs [18.14 Kg]

Connectors

Description	Connector 1	Connector 2
Type	SMA Male	SMA Male
Option	Weatherproof Boot	Weatherproof Boot
Specification	MIL-STD-348A	MIL-STD-348A
Impedance	50 Ohms	50 Ohms
Configuration	Straight	Straight
Contact Material and Plating	Brass, Gold	Brass, Gold
Contact Plating Specification	50 µin minimum	50 µin minimum
Dielectric Type	PTFE	PTFE
Body Material and Plating	Brass, Nickel	Brass, Nickel
Body Plating Specification	100 µin minimum	100 µin minimum
Coupling Nut Material and Plating	Brass, Nickel	Brass, Nickel
Coupling Nut Plating Specification	100 µin minimum	100 µin minimum
Boot Material	Silicone	Silicone

Environmental Specifications

Operating Range Temperature	-40 to +85 deg C
Ingress Protection (IP) Rating	IP68

Compliance Certifications (see [product page](#) for current document)

Plotted and Other Data

Notes:
Values at 25°C, sea level.

Waterproof IP68 SMA Male (Plug) to SMA Male (Plug) Low Loss Cable Using LMR-195 Coax

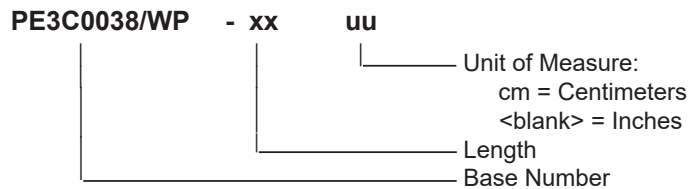


PE3C0038/WP

Typical Performance Data

How to Order

Part Number Configuration:



Example: PE3C0038/WP-12 = 12 inches long cable
PE3C0038/WP-100cm = 100 cm long cable

Waterproof IP68 SMA Male (Plug) to SMA Male (Plug) Low Loss Cable Using LMR-195 Coax from Pasternack Enterprises has same day shipment for domestic and International orders. Our RF, microwave and millimeter wave products maintain a 99.4% availability and are part of the broadest selection in the industry.

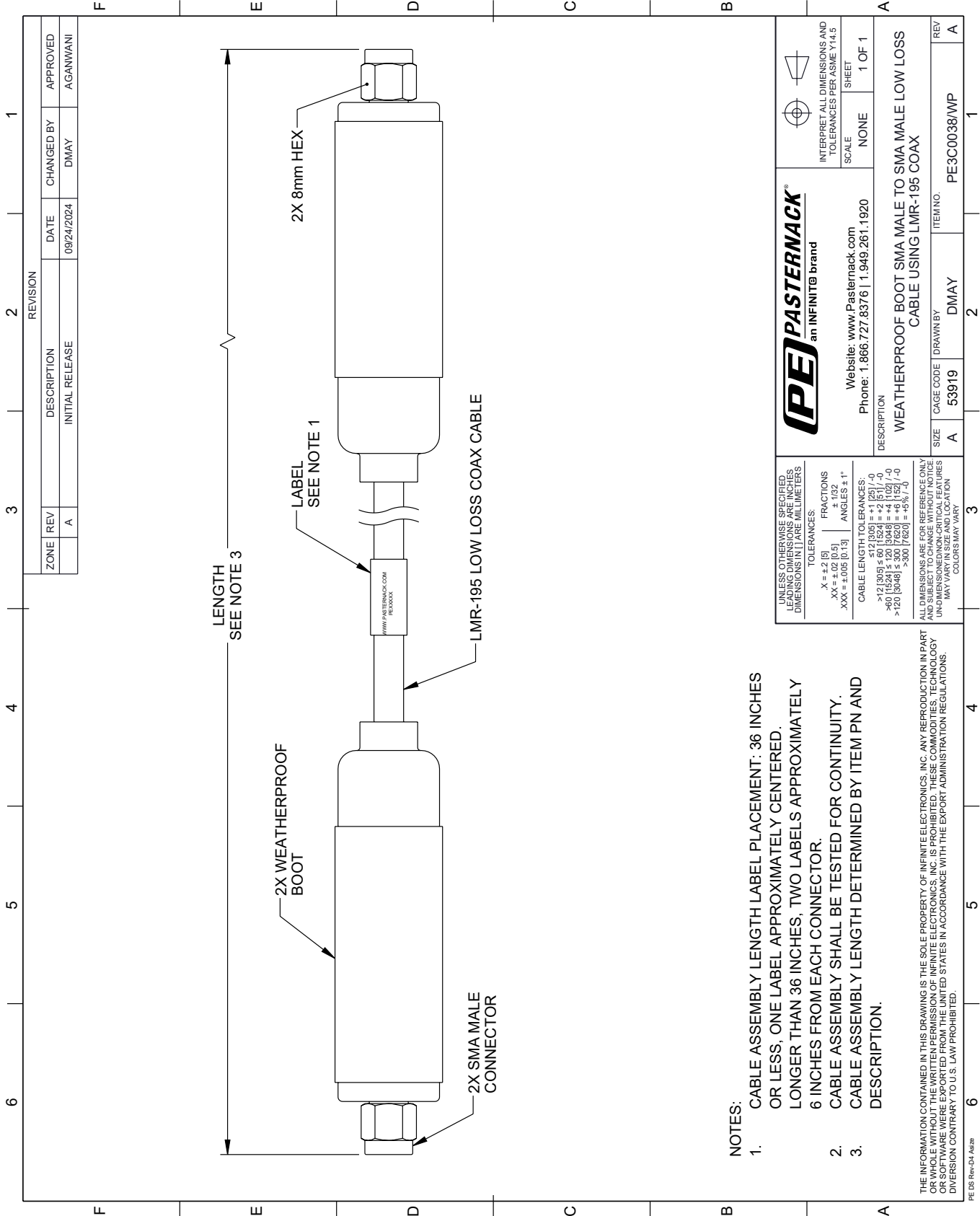
Click the following link (or enter part number in "SEARCH" on website) to obtain additional part information including price, inventory and certifications: [Waterproof IP68 SMA Male \(Plug\) to SMA Male \(Plug\) Low Loss Cable Using LMR-195 Coax PE3C0038/WP](#)

URL: <https://www.pasternack.com/waterproof-ip68-sma-male-plug-to-sma-male-plug-low-loss-cable-using-lmr-195-pe3c0038-wp-p.aspx>

The information contained within this document is accurate to the best of our knowledge and representative of the part described herein. It may be necessary to make modifications to the part and/or the documentation of the part in order to implement improvements. Pasternack Enterprises reserves the right to make such changes as required. Unless otherwise stated, all specifications are nominal. Pasternack Enterprises does not make any representation or warranty regarding the suitability of the part described herein for any particular purpose, and Pasternack Enterprises does not assume liability arising out of the use of any part or document.

PE3C0038/WP CAD Drawing

Waterproof IP68 SMA Male (Plug) to SMA Male (Plug) Low Loss Cable Using LMR-195 Coax



NOTES:

1. CABLE ASSEMBLY LENGTH LABEL PLACEMENT: 36 INCHES OR LESS, ONE LABEL APPROXIMATELY CENTERED. LONGER THAN 36 INCHES, TWO LABELS APPROXIMATELY 6 INCHES FROM EACH CONNECTOR.
2. CABLE ASSEMBLY SHALL BE TESTED FOR CONTINUITY.
3. CABLE ASSEMBLY LENGTH DETERMINED BY ITEM PN AND DESCRIPTION.

THE INFORMATION CONTAINED IN THIS DRAWING IS THE SOLE PROPERTY OF INFINITE ELECTRONICS, INC. ANY REPRODUCTION IN PART OR WHOLE WITHOUT THE WRITTEN PERMISSION OF INFINITE ELECTRONICS, INC. IS PROHIBITED. THESE COMMODITIES, TECHNOLOGY OR SOFTWARE WERE EXPORTED FROM THE UNITED STATES IN ACCORDANCE WITH THE EXPORT ADMINISTRATION REGULATIONS. DIVERSION CONTRARY TO U.S. LAW PROHIBITED.

<p>PE PASTERNAK an INFINITE brand</p>		<p>Website: www.Pasternack.com Phone: 1.866.727.8376 1.949.261.1920</p>	<p>INTERPRET ALL DIMENSIONS AND TOLERANCES PER ASME Y14.5</p> <p>SCALE: NONE SHEET: 1 OF 1</p>
<p>DESCRIPTION: WEATHERPROOF BOOT SMA MALE TO SMA MALE LOW LOSS CABLE USING LMR-195 COAX</p>			
<p>UNLESS OTHERWISE SPECIFIED, LEADING DIMENSIONS ARE IN INCHES AND DIMENSIONS IN [] ARE MILLIMETERS</p> <p>TOLERANCES: .X = ±.2 [5] .XX = ±.02 [0.5] .XXX = ±.005 [0.13] FRACTIONS: ± 1/32 ANGLES: ± 1°</p> <p>CABLE LENGTH TOLERANCES: <12 [305] ≤ 60 [1524] = ±.125 [-0] >60 [1524] ≤ 120 [3048] = ±.15 [-0] >120 [3048] ≤ 300 [7620] = ±.2 [-0] >300 [7620] = ±.25 [-0]</p>	<p>ALL DIMENSIONS ARE FOR REFERENCE ONLY. UNLESS OTHERWISE SPECIFIED, ALL DIMENSIONS ARE NON-CRITICAL FEATURES. UNLESS OTHERWISE SPECIFIED, DIMENSIONS MAY VARY.</p> <p>COLORS MAY VARY</p>	<p>SIZE: A CAGE CODE: 53919 DRAWN BY: DMAY</p>	<p>ITEM NO.: PE3C0038/WP REV: A</p>