

## Reverse Polarity SMA Plug to N Male Low Loss Cable Using LMR-240 Coax with HeatShrink



### PE3C0629/HS

#### Configuration

- Connector 1: SMA Plug Reverse Polarity
- Connector 2: N Male
- Cable Type: LMR-240
- Coax Flex Type: Flexible

#### Features

- Max Frequency 8 GHz
- Shielding Effectivity > 90 dB
- 84% Phase Velocity
- Double Shielded
- PE Jacket



#### Applications

- General Purpose
- Laboratory Use

#### Description

Pasternack's PE3C0629/HS reverse polarity SMA plug to type N male cable using LMR-240 coax is part of our full line of RF components available for same-day shipping. Pasternack's flexible RF cable assemblies are ideal for applications where tight bends and flexure are required. This Pasternack reverse polarity SMA to type N cable assembly has a plug to male gender configuration with 50 ohm flexible LMR-240 coax. The PE3C0629/HS reverse polarity SMA plug to type N male cable assembly operates to 8 GHz. The double shielding of this Pasternack cable assembly provides excellent shielding effectiveness of better than 90 dB.

Custom versions of most RF cable assemblies can be built and shipped same day. Custom cable assembly lengths can be obtained by specifying the desired length on the web site at time of order or by contacting a sales representative. Other available RF cable assembly value added services include connector orientation or clocking, heat shrink booting and custom labeling. RF testing can also be performed to document the electrical performance of your cable assembly.

#### Electrical Specifications

Description	Minimum	Typical	Maximum	Units
Frequency Range	DC		8	GHz
VSWR			1.4:1	
Velocity of Propagation		84		%
RF Shielding	90			dB
Group Delay		1.21 [3.97]		ns/ft [ns/m]
Capacitance		24.2 [79.4]		pF/ft [pF/m]
Inductance		0.06 [0.2]		uH/ft [uH/m]
DC Resistance Inner Conductor		3.2 [10.5]		Ohms/1000ft [Ohms/Km]
DC Resistance Outer Conductor		3.89 [12.76]		Ohms/1000ft [Ohms/Km]

## Reverse Polarity SMA Plug to N Male Low Loss Cable Using LMR-240 Coax with HeatShrink



### PE3C0629/HS

#### Electrical Specifications

Description	Minimum	Typical	Maximum	Units
Jacket Spark			5,000	Vrms

#### Specifications by Frequency

Part Number	Length	Description	F1	F2	F3	F4	F5	Units	Weight (lbs)
			Frequency					MHz	
PE3C0629/HS	Custom Lengths Available	Insertion Loss (Typ.)	0.039	0.056	0.076	0.129	0.204	dB/ft	
			0.13	0.19	0.25	0.43	0.67	dB/m	
PE3C0629/HS-12	12 inch	Insertion Loss (Typ.)	0.24	0.26	0.28	0.33	0.41	dB	0.115
PE3C0629/HS-24	24 inch	Insertion Loss (Typ.)	0.28	0.32	0.36	0.46	0.61	dB	0.148
PE3C0629/HS-36	36 inch	Insertion Loss (Typ.)	0.32	0.37	0.43	0.59	0.82	dB	0.181
PE3C0629/HS-48	48 inch	Insertion Loss (Typ.)	0.36	0.43	0.51	0.72	1.02	dB	0.214
PE3C0629/HS-60	60 inch	Insertion Loss (Typ.)	0.4	0.48	0.58	0.85	1.22	dB	0.247

The insertion loss data for the base model does not include loss due to the connectors. Each length includes insertion loss due to the connectors.

Loss due to Connector 1:	0.1 dB
Loss due to Connector 2:	0.1 dB
Base Weight:	0.115 pounds
Additional Weight per Inch:	0.00275 pounds

#### Mechanical Specifications

##### Cable Assembly

Width/Diameter	0.5 in [12.7 mm]
Weight	0.082 lbs [37.19 g]

##### Cable

Cable Type	LMR-240
Impedance	50 Ohms
Inner Conductor Type	Solid
Inner Conductor Material and Plating	Copper
Dielectric Type	PE (F)
Number of Shields	2
Shield Layer 1	Aluminum Tape
Shield Layer 2	Tinned Copper Braid
Jacket Material	PE, Black
Jacket Diameter	0.24 in [6.1 mm]
One Time Minimum Bend Radius	0.75 in [19.05 mm]
Repeated Minimum Bend Radius	2.5 in [63.5 mm]
Bending Moment	0.25 lbs-ft [0.34 N-m]
Flat Plate Crush	20 lbs/in [0.36 Kg/mm]
Tensile Strength	80 lbs [36.29 Kg]

Reverse Polarity SMA Plug to N Male Low Loss Cable Using LMR-240 Coax with HeatShrink



**PE3C0629/HS**

**Connectors**

Description	Connector 1	Connector 2
Type	SMA Plug Reverse Polarity	N Male
Specification		MIL-STD-348A
Impedance	50 Ohms	50 Ohms
Configuration	Straight	Straight
Contact Material and Plating	Beryllium Copper, Gold	Brass, Gold
Contact Plating Specification		30 µin minimum
Dielectric Type	PTFE	PTFE
Body Material and Plating	Brass, Gold	Brass, Nickel
Body Plating Specification		100 µin minimum
Coupling Nut Material and Plating	Brass, Gold	Brass, Nickel
Coupling Nut Plating Specification		100 µin minimum
Hex Size	5/16 inch	
Torque	3 in-lbs 0.34 Nm	

**Environmental Specifications**

Operating Range Temperature -40 to +85 deg C

**Compliance Certifications** (see [product page](#) for current document)

**Plotted and Other Data**

Notes:

## Reverse Polarity SMA Plug to N Male Low Loss Cable Using LMR-240 Coax with HeatShrink



### PE3C0629/HS

#### Typical Performance Data

#### How to Order

Part Number Configuration:

**PE3C0629/HS - xx uu**

Unit of Measure:  
cm = Centimeters  
<blank> = Inches

Length

Base Number

Example: PE3C0629/HS-12 = 12 inches long cable  
PE3C0629/HS-100cm = 100 cm long cable

Reverse Polarity SMA Plug to N Male Low Loss Cable Using LMR-240 Coax with HeatShrink from Pasternack Enterprises has same day shipment for domestic and International orders. Our RF, microwave and millimeter wave products maintain a 99.4% availability and are part of the broadest selection in the industry.

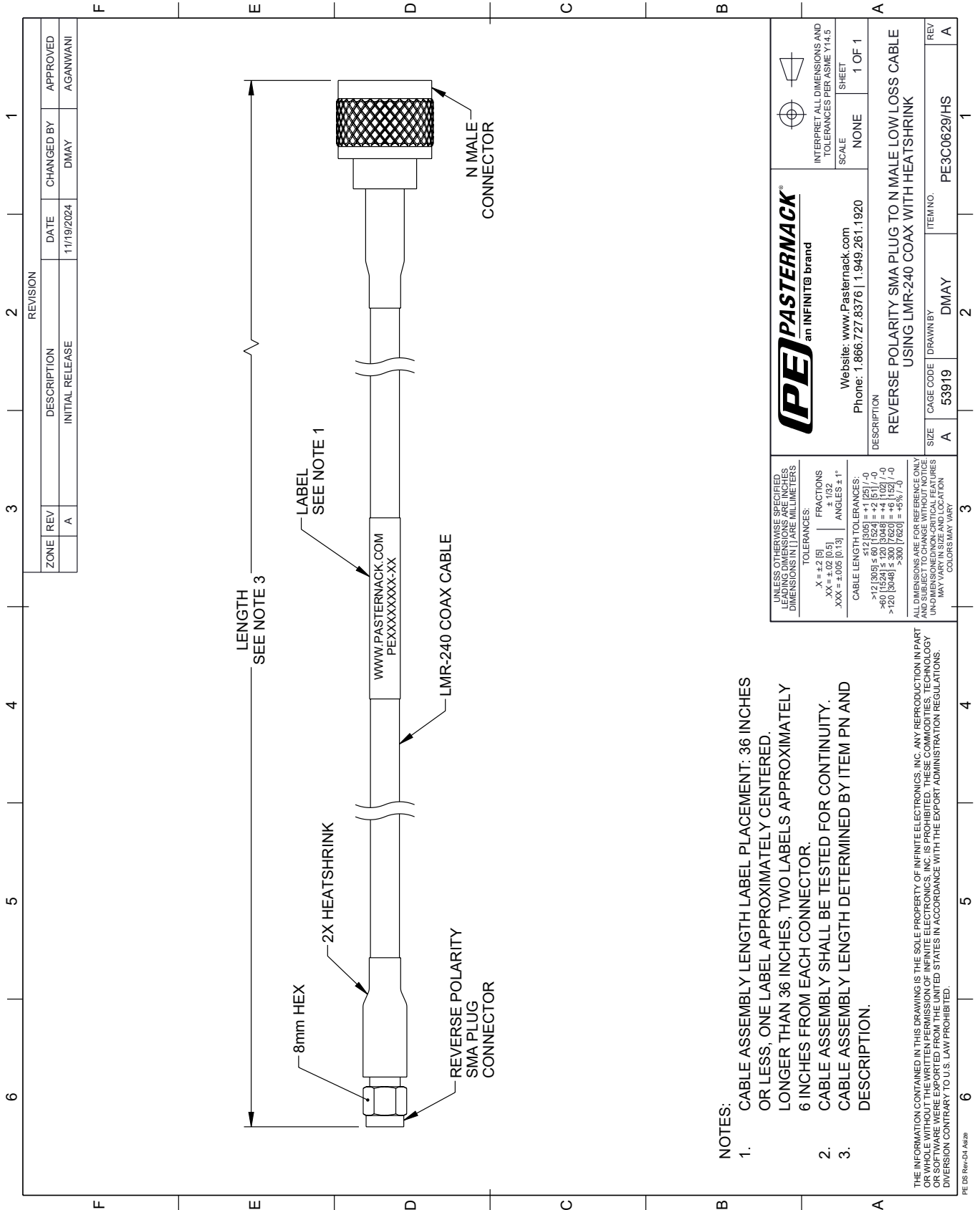
Click the following link (or enter part number in "SEARCH" on website) to obtain additional part information including price, inventory and certifications: [Reverse Polarity SMA Plug to N Male Low Loss Cable Using LMR-240 Coax with HeatShrink PE3C0629/HS](https://www.pasternack.com/reverse-polarity-sma-plug-to-n-male-low-loss-cable-using-lmr-240-coax-with-heatshrink-pe3c0629-hs)

URL: <https://www.pasternack.com/reverse-polarity-sma-plug-to-n-male-low-loss-cable-using-lmr-240-with-heatshrink-pe3c0629-hs-p.aspx>

The information contained within this document is accurate to the best of our knowledge and representative of the part described herein. It may be necessary to make modifications to the part and/or the documentation of the part in order to implement improvements. Pasternack Enterprises reserves the right to make such changes as required. Unless otherwise stated, all specifications are nominal. Pasternack Enterprises does not make any representation or warranty regarding the suitability of the part described herein for any particular purpose, and Pasternack Enterprises does not assume liability arising out of the use of any part or document.

# PE3C0629/HS CAD Drawing

Reverse Polarity SMA Plug to N Male Low Loss Cable Using LMR-240 Coax with HeatShrink



REVISION		DATE	CHANGED BY	APPROVED
ZONE	REV			
	A	11/19/2024	DMAY	AGANWANI
DESCRIPTION				
INITIAL RELEASE				

**PE PASTERNAK**  
an INFINITE brand

Website: [www.Pasternack.com](http://www.Pasternack.com)  
Phone: 1.866.727.8376 | 1.949.261.1920

INTERPRET ALL DIMENSIONS AND TOLERANCES PER ASME Y14.5

SCALE: NONE  
SHEET: 1 OF 1

DESCRIPTION: REVERSE POLARITY SMA PLUG TO N MALE LOW LOSS CABLE USING LMR-240 COAX WITH HEATSHRINK

SIZE: A  
CAGE CODE: 53919  
DRAWN BY: DMAY  
ITEM NO.: PE3C0629/HS

REV: A

UNLESS OTHERWISE SPECIFIED, LEADING DIMENSIONS ARE IN INCHES AND TRAILING DIMENSIONS ARE IN MILLIMETERS.

TOLERANCES:  
 .X = ±.2 (5)  
 .XX = ±.02 (0.5)  
 .XXX = ±.005 (0.13)  
 FRACTIONS ± 1/32  
 ANGLES ± 1°

CABLE LENGTH TOLERANCES:  
 >12 (305) ≤ 60 (1524) = ±.125 (3.175) / -0  
 >60 (1524) ≤ 120 (3048) = ±.102 (2.591) / -0  
 >120 (3048) ≤ 300 (7620) = ±.079 (2.007) / -0

ALL DIMENSIONS ARE FOR REFERENCE ONLY. DIMENSIONS OF UNUSUAL OR UNUSUAL FEATURES MAY VARY IN SIZE AND LOCATION. COLORS MAY VARY.

THE INFORMATION CONTAINED IN THIS DRAWING IS THE SOLE PROPERTY OF INFINITE ELECTRONICS, INC. ANY REPRODUCTION IN PART OR WHOLE WITHOUT THE WRITTEN PERMISSION OF INFINITE ELECTRONICS, INC. IS PROHIBITED. THESE COMMODITIES, TECHNOLOGY OR SOFTWARE ARE EXPORTED FROM THE UNITED STATES IN ACCORDANCE WITH THE EXPORT ADMINISTRATION REGULATIONS. DIVERSION CONTRARY TO U.S. LAW PROHIBITED.

PE DS Rev-04 Add2

- NOTES:**
- CABLE ASSEMBLY LENGTH LABEL PLACEMENT: 36 INCHES OR LESS, ONE LABEL APPROXIMATELY CENTERED. LONGER THAN 36 INCHES, TWO LABELS APPROXIMATELY 6 INCHES FROM EACH CONNECTOR.
  - CABLE ASSEMBLY SHALL BE TESTED FOR CONTINUITY.
  - CABLE ASSEMBLY LENGTH DETERMINED BY ITEM PN AND DESCRIPTION.