

## N Male to N Male Cable Using RG213 Coax



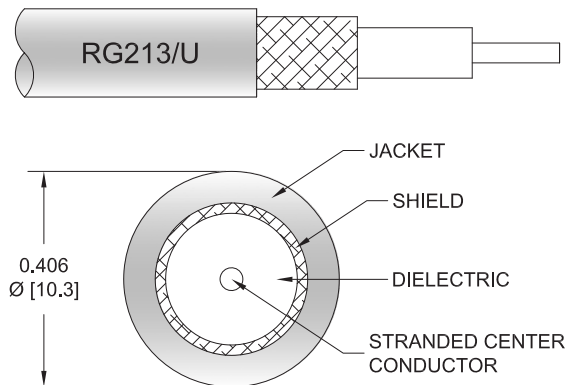
### PE3C0745

#### Configuration

- Connector 1: N Male
- Connector 2: N Male
- Cable Type: RG213
- Coax Flex Type: Flexible

#### Features

- Max Frequency 1 GHz
- 66% Phase Velocity
- PVC Jacket



#### Applications

- General Purpose
- Laboratory Use

#### Description

Pasternack's PE3C0745 type N male to type N male cable using RG213 coax is part of our full line of RF components available for same-day shipping. Pasternack's flexible RF cable assemblies are ideal for applications where tight bends and flexure are required. This Pasternack type N to type N cable assembly has a male to male gender configuration with 50 ohm flexible RG213 coax. The PE3C0745 type N male to type N male cable assembly operates to 1 GHz.

Custom versions of most RF cable assemblies can be built and shipped same day. Custom cable assembly lengths can be obtained by specifying the desired length on the web site at time of order or by contacting a sales representative. Other available RF cable assembly value added services include connector orientation or clocking, heat shrink booting and custom labeling. RF testing can also be performed to document the electrical performance of your cable assembly.

#### Electrical Specifications

Description	Minimum	Typical	Maximum	Units
Frequency Range	DC		1,000	MHz
VSWR			1.4:1	
Velocity of Propagation		66		%
Capacitance		30.8 [101.05]		pF/ft [pF/m]

#### Specifications by Frequency

## N Male to N Male Cable Using RG213 Coax



### PE3C0745

Part Number	Length	Description	F1	F2	F3	F4	F5	Units	Weight (lbs)
		Frequency	50	100	250	500	1000	MHz	
PE3C0745	Custom Lengths Available	Insertion Loss (Typ.)	0.011	0.022	0.035	0.053	0.08	dB/ft	
			0.04	0.08	0.12	0.18	0.27	dB/m	
PE3C0745-24	24 inch	Insertion Loss (Typ.)	0.23	0.25	0.27	0.31	0.36	dB	0.435
PE3C0745-36	36 inch	Insertion Loss (Typ.)	0.24	0.27	0.31	0.36	0.44	dB	0.536
PE3C0745-48	48 inch	Insertion Loss (Typ.)	0.25	0.29	0.34	0.42	0.52	dB	0.637
PE3C0745-60	60 inch	Insertion Loss (Typ.)	0.26	0.31	0.38	0.47	0.6	dB	0.738
PE3C0745-72	72 inch	Insertion Loss (Typ.)	0.27	0.34	0.41	0.52	0.68	dB	0.839

The insertion loss data for the base model does not include loss due to the connectors. Each length includes insertion loss due to the connectors.

Loss due to Connector 1:	0.1 dB
Loss due to Connector 2:	0.1 dB
Base Weight:	0.333 pounds
Additional Weight per Inch:	0.00842 pounds

## Mechanical Specifications

### Cable Assembly

Weight	0.333 lbs [151.05 g]
--------	----------------------

### Cable

Cable Type	RG213
Impedance	50 Ohms
Inner Conductor Type	Stranded
Inner Conductor Material and Plating	Copper
Dielectric Type	PE
Number of Shields	1
Shield Layer 1	Copper Braid
Jacket Material	PVC, Black
Jacket Diameter	0.405 in [10.29 mm]
Repeated Minimum Bend Radius	40 in [101.6 cm]

## N Male to N Male Cable Using RG213 Coax



### PE3C0745

#### Connectors

Description	Connector 1	Connector 2
Type	N Male	N Male
Impedance	50 Ohms	50 Ohms
Configuration	Straight	Straight
Contact Material and Plating	Brass, Gold	Brass, Gold
Contact Plating Specification	30 µin minimum	30 µin minimum
Dielectric Type	PTFE	PTFE
Body Material and Plating	Brass, Nickel	Brass, Nickel
Body Plating Specification	100 µin minimum	100 µin minimum
Coupling Nut Material and Plating	Brass, Nickel	Brass, Nickel
Coupling Nut Plating Specification	100 µin minimum	100 µin minimum

#### Environmental Specifications

Operating Range Temperature -25 to +70 deg C

**Compliance Certifications** (see [product page](#) for current document)

#### Plotted and Other Data

Notes:



## N Male to N Male Cable Using RG213 Coax

### PE3C0745

#### Typical Performance Data

#### How to Order

Part Number Configuration:

**PE3C0745**

**- xx**

**uu**

Unit of Measure:  
cm = Centimeters  
<blank> = Inches

Length

Base Number

Example: PE3C0745-12 = 12 inches long cable  
PE3C0745-100cm = 100 cm long cable

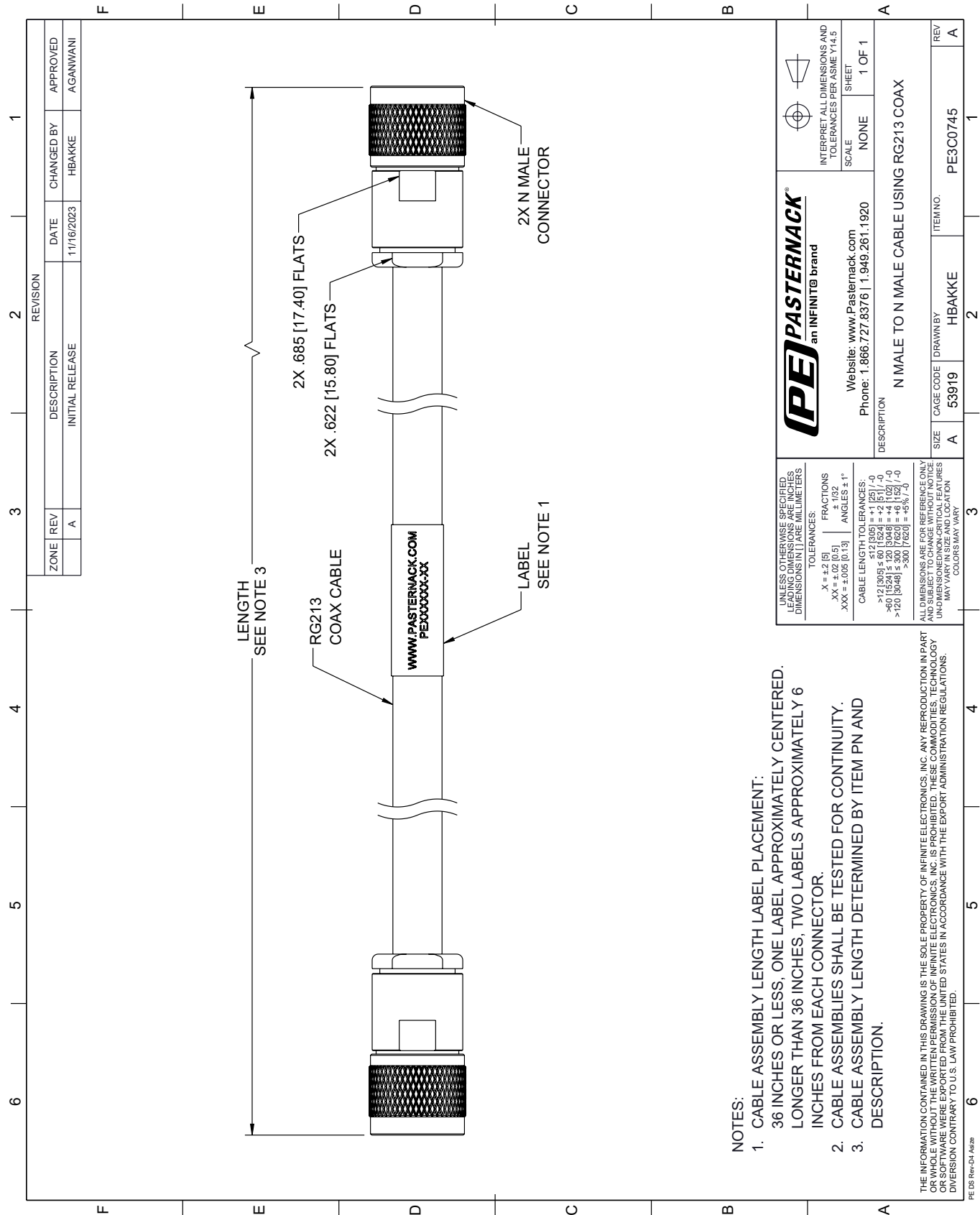
N Male to N Male Cable Using RG213 Coax from Pasternack Enterprises has same day shipment for domestic and International orders. Our RF, microwave and millimeter wave products maintain a 99.4% availability and are part of the broadest selection in the industry.

Click the following link (or enter part number in "SEARCH" on website) to obtain additional part information including price, inventory and certifications: [N Male to N Male Cable Using RG213 Coax PE3C0745](#)

URL: <https://www.pasternack.com/n-male-to-n-male-cable-using-rg213-pe3c0745-p.aspx>

The information contained within this document is accurate to the best of our knowledge and representative of the part described herein. It may be necessary to make modifications to the part and/or the documentation of the part in order to implement improvements. Pasternack Enterprises reserves the right to make such changes as required. Unless otherwise stated, all specifications are nominal. Pasternack Enterprises does not make any representation or warranty regarding the suitability of the part described herein for any particular purpose, and Pasternack Enterprises does not assume liability arising out of the use of any part or document.

PE3C0745 CAD Drawing
N Male to N Male Cable Using RG213 Coax



- NOTES:
- 1. CABLE ASSEMBLY LENGTH LABEL PLACEMENT: 36 INCHES OR LESS, ONE LABEL APPROXIMATELY CENTERED. LONGER THAN 36 INCHES, TWO LABELS APPROXIMATELY 6 INCHES FROM EACH CONNECTOR.
  - 2. CABLE ASSEMBLIES SHALL BE TESTED FOR CONTINUITY.
  - 3. CABLE ASSEMBLY LENGTH DETERMINED BY ITEM PN AND DESCRIPTION.

THE INFORMATION CONTAINED IN THIS DRAWING IS THE SOLE PROPERTY OF INFINITE ELECTRONICS, INC. ANY REPRODUCTION IN PART OR WHOLE WITHOUT THE WRITTEN PERMISSION OF INFINITE ELECTRONICS, INC. IS PROHIBITED. THESE COMMODITIES, TECHNOLOGY OR SOFTWARE WERE EXPORTED FROM THE UNITED STATES IN ACCORDANCE WITH THE EXPORT ADMINISTRATION REGULATIONS. DIVISION CONTRARY TO U.S. LAW PROHIBITED.

UNLESS OTHERWISE SPECIFIED, LEADING DIMENSIONS ARE IN INCHES. DIMENSIONS IN [ ] ARE IN MILLIMETERS.		TOLERANCES:		FRACTIONS		ANGLES	
.X = ±.2 [5]		.XX = ±.02 [0.5]		.XXX = ±.005 [0.13]		± 1/32	
CABLE LENGTH TOLERANCES:		>12 [305] ≤ 60 [1524] = ±.125 [-0]		>60 [1524] ≤ 120 [3048] = ±.125 [-0]		>120 [3048] ≤ 300 [7620] = ±.125 [-0]	
ALL DIMENSIONS ARE FOR REFERENCE ONLY. DIMENSIONS SHALL BE TO THE CENTER OF THE CABLE ASSEMBLY UNLESS OTHERWISE SPECIFIED. UNLESS OTHERWISE SPECIFIED, DIMENSIONS MAY VARY IN SIZE AND LOCATION. COLORS MAY VARY.		ITEM NO.		DRAWN BY		REV	
DESCRIPTION		SIZE		CAGE CODE		A	
N MALE TO N MALE CABLE USING RG213 COAX		A		53919		HBAKKE	
Website: www.Pasternack.com		Phone: 1.866.727.8376   1.949.261.1920		ITEM NO.		PE3C0745	
Phone: 1.866.727.8376   1.949.261.1920		SCALE		NONE		1 OF 1	
SHEET		INTERPRET ALL DIMENSIONS AND TOLERANCES PER ASME Y14.5		DRAWN BY		HBAKKE	
N MALE TO N MALE CABLE USING RG213 COAX		SCALE		NONE		1 OF 1	
SHEET		INTERPRET ALL DIMENSIONS AND TOLERANCES PER ASME Y14.5		DRAWN BY		HBAKKE	