

SMA Male to SMP Female Cable Using PE-P086 Coax with HeatShrink



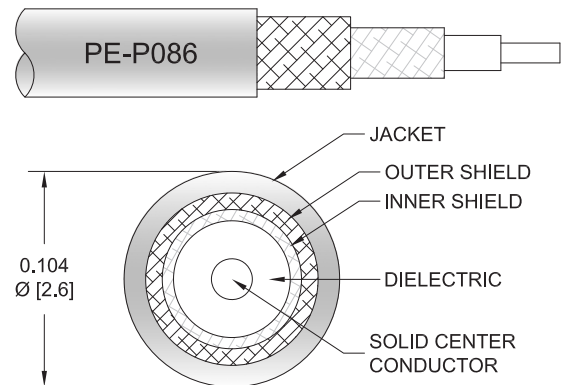
PE3C0790/HS

Configuration

- Connector 1: SMA Male
- Connector 2: SMP Female
- Cable Type: PE-P086
- Coax Flex Type: Flexible

Features

- Max Frequency 18 GHz
- Shielding Effectivity > 110 dB
- 70% Phase Velocity
- Double Shielded
- FEP Jacket



Applications

- General Purpose
- Laboratory Use

Description

Pasternack's PE3C0790/HS SMA male to SMP female cable using PE-P086 coax is part of our full line of RF components available for same-day shipping. Pasternack's flexible RF cable assemblies are ideal for applications where tight bends and flexure are required. This Pasternack SMA to SMP cable assembly has a male to female gender configuration with 50 ohm flexible PE-P086 coax. The PE3C0790/HS SMA male to SMP female cable assembly operates to 18 GHz. The double shielding of this Pasternack cable assembly provides excellent shielding effectiveness of better than 110 dB.

Custom versions of most RF cable assemblies can be built and shipped same day. Custom cable assembly lengths can be obtained by specifying the desired length on the web site at time of order or by contacting a sales representative. Other available RF cable assembly value added services include connector orientation or clocking, heat shrink booting and custom labeling. RF testing can also be performed to document the electrical performance of your cable assembly.

Electrical Specifications

Description	Minimum	Typical	Maximum	Units
Frequency Range	DC		18	GHz
VSWR			1.4:1	
Velocity of Propagation		70		%
RF Shielding	110			dB
Capacitance		29.4 [96.46]		pF/ft [pF/m]

Specifications by Frequency

SMA Male to SMP Female Cable Using
PE-P086 Coax with HeatShrink



PE3C0790/HS

Part Number	Length	Description	F1	F2	F3	F4	F5	Units	Weight (lbs)
			Frequency		1000	2000	4500	9000	
PE3C0790/HS	Custom Lengths Available	Insertion Loss (Typ.)	0.211	0.305	0.47	0.695	1.046	dB/ft	
			0.7	1.01	1.55	2.29	3.44	dB/m	
PE3C0790/HS-6	6 In	Insertion Loss (Typ.)	0.31	0.36	0.44	0.55	0.73	dB	0.021
PE3C0790/HS-12	12 In	Insertion Loss (Typ.)	0.42	0.51	0.67	0.9	1.25	dB	0.027
PE3C0790/HS-24	24 In	Insertion Loss (Typ.)	0.63	0.81	1.14	1.59	2.3	dB	0.041
PE3C0790/HS-36	36 In	Insertion Loss (Typ.)	0.84	1.12	1.61	2.29	3.34	dB	0.054
PE3C0790/HS-48	48 In	Insertion Loss (Typ.)	1.05	1.42	2.08	2.98	4.39	dB	0.067

The insertion loss data for the base model does not include loss due to the connectors. Each length includes insertion loss due to the connectors.

Loss due to Connector 1:	0.1 dB
Loss due to Connector 2:	0.1 dB
Base Weight:	0.027 pounds
Additional Weight per Inch:	0.00109 pounds

Mechanical Specifications

Cable Assembly

Width/Diameter	0.5 in [12.7 mm]
Weight	0.014 lbs [6.35 g]

Cable

Cable Type	PE-P086
Impedance	50 Ohms
Inner Conductor Type	Solid
Inner Conductor Material and Plating	Copper Clad Steel, Silver
Dielectric Type	PTFE
Number of Shields	2
Shield Layer 1	Silver Plated Copper Tape
Shield Layer 2	Silver Plated Copper Braid
Jacket Material	FEP, Blue
Jacket Diameter	0.104 in [2.64 mm]
Repeated Minimum Bend Radius	0.5 in [12.7 mm]

SMA Male to SMP Female Cable Using PE-P086 Coax with HeatShrink



PE3C0790/HS

Connectors

Description	Connector 1	Connector 2
Type	SMA Male	SMP Female
Specification		MIL-STD-348
Impedance	50 Ohms	50 Ohms
Configuration	Straight	Straight
Contact Material and Plating	Brass, Gold over Nickel	Beryllium Copper, Gold
Contact Plating Specification		MIL-G-45204
Dielectric Type	PTFE	PTFE
Body Material and Plating	Brass, Gold over Nickel	Beryllium Copper, Gold
Body Plating Specification		MIL-G-45204
Coupling Nut Material and Plating	Passivated Stainless Steel	
Hex Size	5/16 inch	
Torque	8 in-lbs 0.9 Nm	

Environmental Specifications

Compliance Certifications (see [product page](#) for current document)

Plotted and Other Data

Notes:

SMA Male to SMP Female Cable Using PE-P086 Coax with HeatShrink



PE3C0790/HS

Typical Performance Data

How to Order

Part Number Configuration:

PE3C0790/HS - xx uu



Example: PE3C0790/HS-12 = 12 inches long cable
PE3C0790/HS-100cm = 100 cm long cable

SMA Male to SMP Female Cable Using PE-P086 Coax with HeatShrink from Pasternack Enterprises has same day shipment for domestic and International orders. Our RF, microwave and millimeter wave products maintain a 99.4% availability and are part of the broadest selection in the industry.

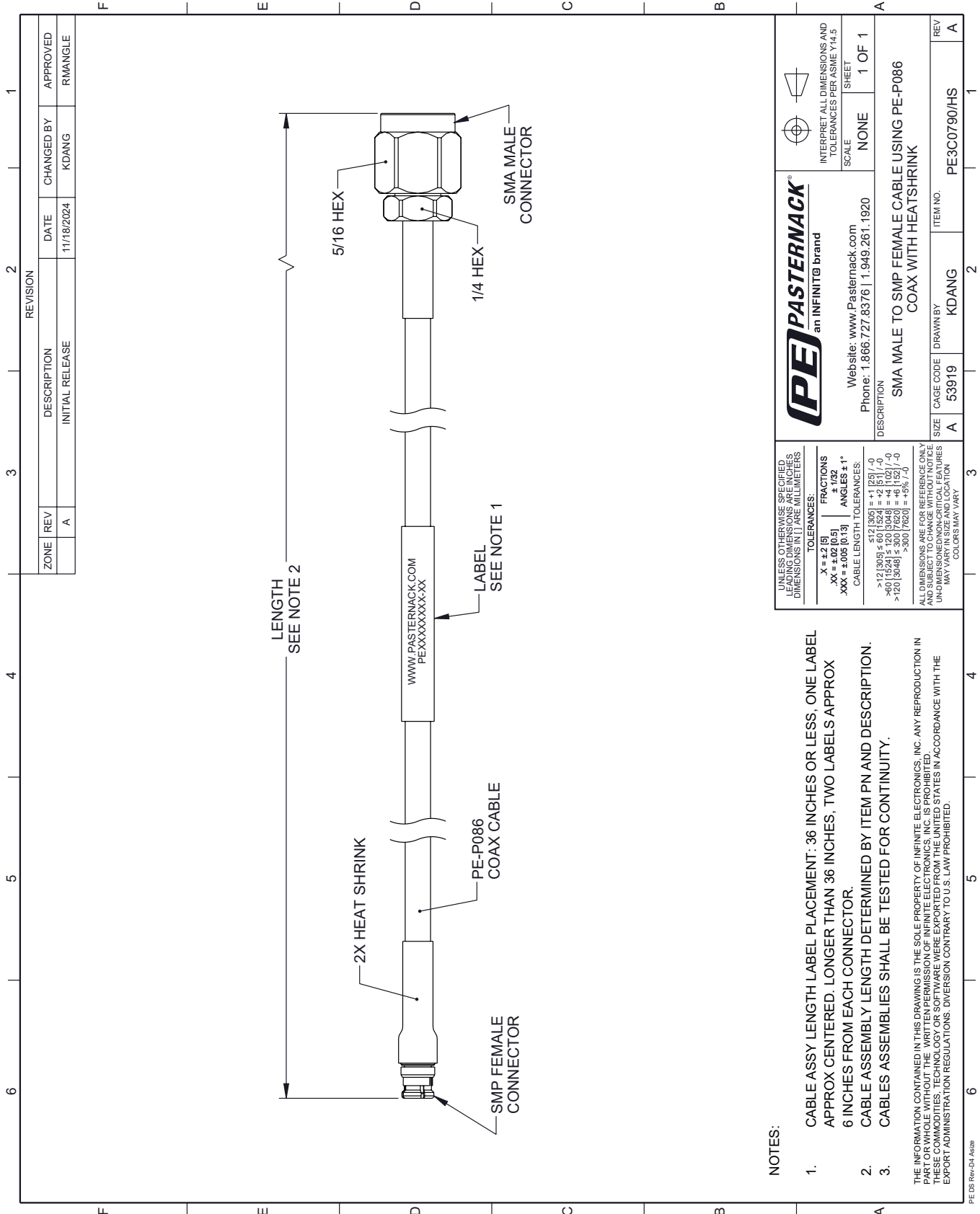
Click the following link (or enter part number in "SEARCH" on website) to obtain additional part information including price, inventory and certifications: [SMA Male to SMP Female Cable Using PE-P086 Coax with HeatShrink PE3C0790/HS](https://www.pasternack.com/sma-male-to-smp-female-cable-using-pe-p086-with-heatshrink-pe3c0790-hs-p.aspx)

URL: <https://www.pasternack.com/sma-male-to-smp-female-cable-using-pe-p086-with-heatshrink-pe3c0790-hs-p.aspx>

The information contained within this document is accurate to the best of our knowledge and representative of the part described herein. It may be necessary to make modifications to the part and/or the documentation of the part in order to implement improvements. Pasternack Enterprises reserves the right to make such changes as required. Unless otherwise stated, all specifications are nominal. Pasternack Enterprises does not make any representation or warranty regarding the suitability of the part described herein for any particular purpose, and Pasternack Enterprises does not assume liability arising out of the use of any part or document.

PE3C0790/HS CAD Drawing

SMA Male to SMP Female Cable Using PE-P086 Coax with HeatShrink



REVISION		DATE	CHANGED BY	APPROVED
ZONE	REV			
	A	11/18/2024	KDANG	RMANGLE
DESCRIPTION				
INITIAL RELEASE				

		INTERPRET ALL DIMENSIONS AND TOLERANCES PER ASME Y14.5 SCALE NONE SHEET 1 OF 1	
Website: www.Pasternack.com Phone: 1.866.727.8376 1.949.261.1920		DESCRIPTION SMA MALE TO SMP FEMALE CABLE USING PE-P086 COAX WITH HEATSHRINK	
SIZE	CAGE CODE	DRAWN BY	ITEM NO.
A	53919	KDANG	PE3C0790/HS
UNLESS OTHERWISE SPECIFIED LEADING DIMENSIONS ARE IN INCHES DIMENSIONS IN [] ARE MILLIMETERS		TOLERANCES: .X = ±.2 [5] .XX = ±.02 [0.5] .XXX = ±.005 [0.13]	
ALL DIMENSIONS ARE FOR REFERENCE ONLY UNLESS OTHERWISE SPECIFIED DIMENSIONS IN SIZE AND LOCATION MAY VARY IN SIZE AND LOCATION COLORS MAY VARY		FRACTIONS ± 1/32 ANGLES ± 1° CABLE LENGTH TOLERANCES: ≤ 12 [305] ± .60 [1524] = +.1 [25] / -0 > 12 [305] ± .60 [1524] = +.1 [25] / -0 > 40 [1024] ± .120 [3048] = +.4 [1027] / -0 > 120 [3048] ± .300 [7620] = +.95 [241] / -0	

- NOTES:**
- CABLE ASSY LENGTH LABEL PLACEMENT: .36 INCHES OR LESS, ONE LABEL APPROX CENTERED. LONGER THAN .36 INCHES, TWO LABELS APPROX .6 INCHES FROM EACH CONNECTOR.
 - CABLE ASSEMBLY LENGTH DETERMINED BY ITEM PN AND DESCRIPTION. CABLE ASSEMBLIES SHALL BE TESTED FOR CONTINUITY.
 - THE INFORMATION CONTAINED IN THIS DRAWING IS THE SOLE PROPERTY OF INFINITE ELECTRONICS, INC. ANY REPRODUCTION IN PART OR WHOLE WITHOUT THE WRITTEN PERMISSION OF INFINITE ELECTRONICS, INC. IS PROHIBITED. THESE COMMODITIES, TECHNOLOGY OR SOFTWARE WERE EXPORTED FROM THE UNITED STATES IN ACCORDANCE WITH THE EXPORT ADMINISTRATION REGULATIONS. DIVERSION CONTRARY TO U.S. LAW PROHIBITED.