

SMA Male to SMA Male Low Loss Space Cable 24 Inch Length Using PE-R200LL Coax



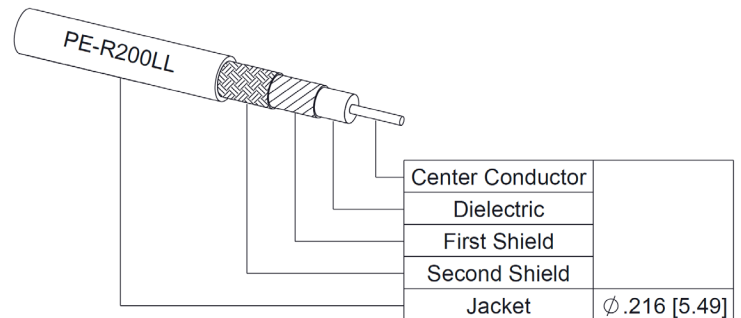
PE3C100011-24

Configuration

- Connector 1: SMA Male
- Connector 2: SMA Male
- Cable Type: PE-R200LL
- Coax Flex Type: Flexible

Features

- Max Frequency 26 GHz
- Shielding Effectivity > 100 dB
- 82% Phase Velocity
- Double Shielded
- ETFE Jacket
- Up to 300 Mrad of Radiation Resistance
- Low Outgassing (TML <1%, CVCM <1%) per ASTM E-595
- Operating Temperature -65 to +150 Deg C
- Built in a Facility with < 100,000 Particles/sq ft
- Built to IPC-A-620 Class 3



Applications

- General Purpose
- Laboratory Use
- Vacuum Environments
- Low Earth Orbit (LEO)
- Space (Exploration, Launches, Maintenance, Stations)
- Ground Systems
- Satellites

Description

Pasternack's PE3C100011-24 SMA male to SMA male 24 inch cable using PE-R200LL coax is part of our full line of RF components available for same-day shipping. Pasternack's flexible RF cable assemblies are ideal for applications where tight bends and flexure are required. This Pasternack SMA to SMA cable assembly has a male to male gender configuration with 50 ohm flexible PE-R200LL coax. The PE3C100011-24 SMA male to SMA male cable assembly operates to 26 GHz. The double shielding of this Pasternack cable assembly provides excellent shielding effectiveness of better than 100 dB.

Custom versions of most RF cable assemblies can be built and shipped same day. Custom cable assembly lengths can be obtained by specifying the desired length on the web site at time of order or by contacting a sales representative. Other available RF cable assembly value added services include connector orientation or clocking, heat shrink booting and custom labeling. RF testing can also be performed to document the electrical performance of your cable assembly.

Electrical Specifications

Description	Minimum	Typical	Maximum	Units
Frequency Range	DC		26	GHz
VSWR			1.4:1	
Velocity of Propagation		82		%
RF Shielding	100			dB
Capacitance		25 [82.02]		pF/ft [pF/m]

Specifications by Frequency

SMA Male to SMA Male Low Loss Space Cable
24 Inch Length Using PE-R200LL Coax



PE3C100011-24

Part Number	Length	Description	F1	F2	F3	F4	F5	Units	Weight (lbs)
			Frequency		1000	2000	4500	9000	
PE3C100011	Custom Lengths Available	Insertion Loss (Typ.)	0.068	0.098	0.15	0.22	0.409	dB/ft	
			0.23	0.33	0.5	0.73	1.35	dB/m	
PE3C100011-12	12 Inch	Insertion Loss (Typ.)	0.27	0.3	0.35	0.42	0.61	dB	0.11
PE3C100011-18	18 Inch	Insertion Loss (Typ.)	0.31	0.35	0.43	0.53	0.82	dB	0.134
PE3C100011-24	24 Inch	Insertion Loss (Typ.)	0.34	0.4	0.5	0.64	1.02	dB	0.158
PE3C100011-100CM	100 CM	Insertion Loss (Typ.)	0.43	0.53	0.7	0.93	1.55	dB	0.22
PE3C100011-200CM	200 CM	Insertion Loss (Typ.)	0.65	0.85	1.19	1.65	2.89	dB	0.377

The insertion loss data for the base model does not include loss due to the connectors. Each length includes insertion loss due to the connectors.

Loss due to Connector 1: 0.1 dB
 Loss due to Connector 2: 0.1 dB
 Base Weight: 0.11 pounds
 Additional Weight per Inch: 0.004 pounds

Mechanical Specifications

Cable Assembly

Length 24 in [609.6 mm]
 Width/Diameter 0.437 in [11.1 mm]
 Weight 0.158 lbs [71.67 g]

Cable

Cable Type PE-R200LL
 Impedance 50 Ohms
 Inner Conductor Type Solid
 Inner Conductor Material and Plating Copper, Silver
 Dielectric Type PTFE
 Number of Shields 2
 Shield Layer 1 Silver plated copper
 Shield Layer 2 Silver plated copper
 Jacket Material ETFE, Black
 Jacket Diameter 0.216 in [5.49 mm]
 One Time Minimum Bend Radius 1.08 in [27.43 mm]

SMA Male to SMA Male Low Loss Space Cable
24 Inch Length Using PE-R200LL Coax



PE3C100011-24

Connectors

Description	Connector 1	Connector 2
Type	SMA Male	SMA Male
Impedance	50 Ohms	50 Ohms
Configuration	Straight	Straight
Contact Material and Plating	Brass, Gold	Brass, Gold
Contact Plating Specification	30 µin minimum	30 µin minimum
Dielectric Type	PTFE	PTFE
Body Material and Plating	Stainless Steel, Passivated	Stainless Steel, Passivated

Environmental Specifications

Operating Range Temperature -65 to +150 deg C

Compliance Certifications (see [product page](#) for current document)

Plotted and Other Data

Notes:
Values at 25°C, sea level.

SMA Male to SMA Male Low Loss Space Cable
24 Inch Length Using PE-R200LL Coax



PE3C100011-24

Typical Performance Data

How to Order

Part Number Configuration:

PE3C100011

- xx

uu

Unit of Measure:
cm = Centimeters
<blank> = Inches
Length
Base Number

Example: PE3C100011-12 = 12 inches long cable
PE3C100011-100cm = 100 cm long cable

SMA Male to SMA Male Low Loss Space Cable 24 Inch Length Using PE-R200LL Coax from Pasternack Enterprises has same day shipment for domestic and International orders. Our RF, microwave and millimeter wave products maintain a 99.4% availability and are part of the broadest selection in the industry.

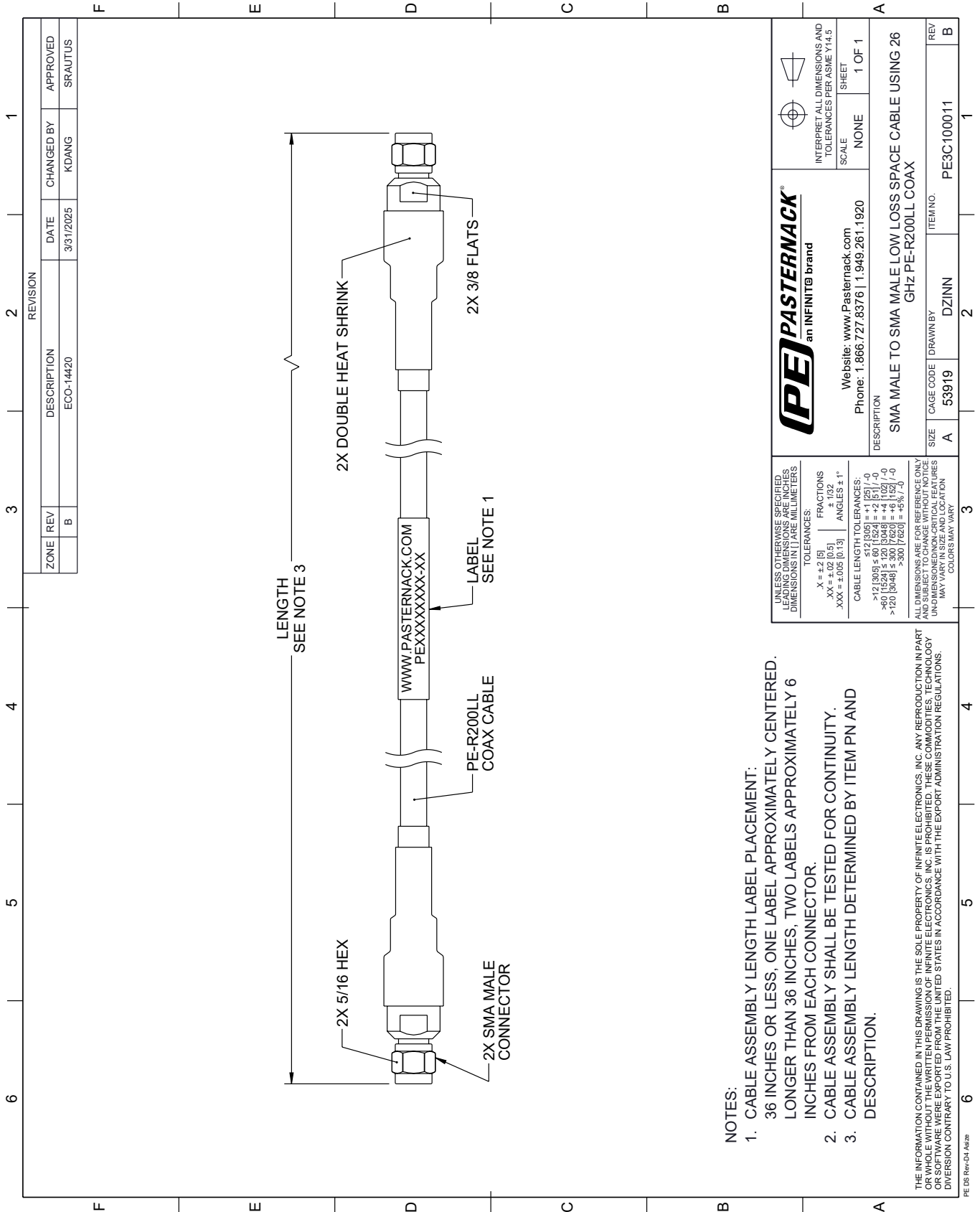
Click the following link (or enter part number in "SEARCH" on website) to obtain additional part information including price, inventory and certifications: [SMA Male to SMA Male Low Loss Space Cable 24 Inch Length Using PE-R200LL Coax PE3C100011-24](#)

URL: <https://www.pasternack.com/sma-male-to-sma-male-low-loss-space-cable-24-inch-length-using-pe-r200ll-pe3c100011-24-p.aspx>

The information contained within this document is accurate to the best of our knowledge and representative of the part described herein. It may be necessary to make modifications to the part and/or the documentation of the part in order to implement improvements. Pasternack Enterprises reserves the right to make such changes as required. Unless otherwise stated, all specifications are nominal. Pasternack Enterprises does not make any representation or warranty regarding the suitability of the part described herein for any particular purpose, and Pasternack Enterprises does not assume liability arising out of the use of any part or document.

PE3C100011-24 CAD Drawing

SMA Male to SMA Male Low Loss Space Cable 24 Inch Length Using PE-R200LL Coax



NOTES:

1. CABLE ASSEMBLY LENGTH LABEL PLACEMENT: 36 INCHES OR LESS, ONE LABEL APPROXIMATELY CENTERED. LONGER THAN 36 INCHES, TWO LABELS APPROXIMATELY 6 INCHES FROM EACH CONNECTOR.
2. CABLE ASSEMBLY SHALL BE TESTED FOR CONTINUITY.
3. CABLE ASSEMBLY LENGTH DETERMINED BY ITEM PN AND DESCRIPTION.

THE INFORMATION CONTAINED IN THIS DRAWING IS THE SOLE PROPERTY OF INFINITE ELECTRONICS, INC. ANY REPRODUCTION IN PART OR WHOLE WITHOUT THE WRITTEN PERMISSION OF INFINITE ELECTRONICS, INC. IS PROHIBITED. THESE COMMODITIES, TECHNOLOGY OR SOFTWARE WERE EXPORTED FROM THE UNITED STATES IN ACCORDANCE WITH THE EXPORT ADMINISTRATION REGULATIONS. DIVERSION CONTRARY TO U.S. LAW PROHIBITED.

PE DS Rev-04 Add2

REVISION		DATE	CHANGED BY	APPROVED	
ZONE	REV	DESCRIPTION	ECO-14420	KDANG	SRAUTUS
	B				

		INTERPRET ALL DIMENSIONS AND TOLERANCES PER ASME Y14.5	
		SCALE	NONE
Website: www.pasternack.com Phone: 1.866.727.8376 1.949.261.1920		SHEET	1 OF 1
SMA MALE TO SMA MALE LOW LOSS SPACE CABLE USING 26 GHz PE-R200LL COAX			
DESCRIPTION	SIZE	CAGE CODE	ITEM NO.
	A	53919	PE3C100011
DRAWN BY: DZINN		REV: B	

UNLESS OTHERWISE SPECIFIED, LEADING DIMENSIONS ARE IN INCHES. DIMENSIONS IN [] ARE MILLIMETERS.

TOLERANCES:
 .X = ±.2 [5]
 .XX = ±.02 [0.5]
 .XXX = ±.005 [0.13]

FRACTIONS
 ± 1/32
 ANGLES ± 1°

CABLE LENGTH TOLERANCES:
 <12 [305] ≤ 60 [1524] = ±.1 [25] / -0
 >60 [1524] ≤ 120 [3048] = ±.4 [102] / -0
 >120 [3048] ≤ 300 [7620] = ±.6 [152] / -0

ALL DIMENSIONS ARE FOR REFERENCE ONLY. UNDIMENSIONED/NON-CRITICAL FEATURES MAY VARY IN SIZE AND LOCATION. COLORS MAY VARY.