

## 2.92mm Male to 2.92mm Female Bulkhead Low Loss Space Cable 18 Inch Length Using PE-R135LL Coax



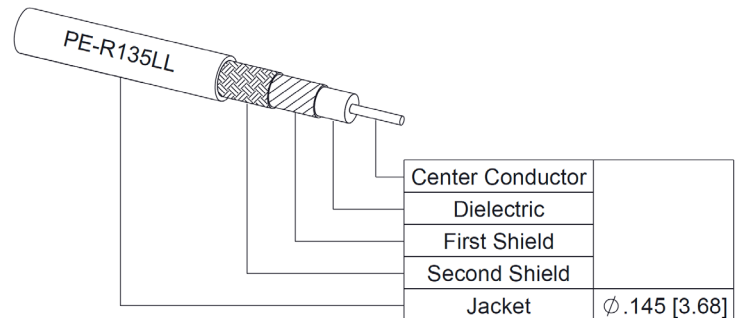
### PE3C100018-18

#### Configuration

- Connector 1: 2.92mm Male
- Connector 2: 2.92mm Female Bulkhead
- Cable Type: PE-R135LL
- Coax Flex Type: Flexible

#### Features

- Max Frequency 40 GHz
- Shielding Effectivity > 100 dB
- 82% Phase Velocity
- Double Shielded
- ETFE Jacket
- Up to 300 Mrad of Radiation Resistance
- Low Outgassing (TML <1%, CVCM <1%) per ASTM E-595
- Operating Temperature -65 to +150 Deg C
- Built in a Facility with < 100,000 Particles/sq ft
- Built to IPC-A-620 Class 3



#### Applications

- General Purpose
- Laboratory Use
- Vacuum Environments
- Low Earth Orbit (LEO)
- Space (Exploration, Launches, Maintenance, Stations)
- Ground Systems
- Satellites

#### Description

Pasternack's PE3C100018-18 2.92mm male to 2.92mm female bulkhead 18 inch cable using PE-R135LL coax is part of our full line of RF components available for same-day shipping. Pasternack's flexible RF cable assemblies are ideal for applications where tight bends and flexure are required. This Pasternack 2.92mm to 2.92mm cable assembly has a male to female gender configuration with 50 ohm flexible PE-R135LL coax. The PE3C100018-18 2.92mm male to 2.92mm female cable assembly operates to 40 GHz. Our RF cable assembly with 2.92mm bulkhead interface allows designers to create external connections on their product enclosures, and can be used in a variety of other rack mount and panel mount applications. The double shielding of this Pasternack cable assembly provides excellent shielding effectiveness of better than 100 dB.

Custom versions of most RF cable assemblies can be built and shipped same day. Custom cable assembly lengths can be obtained by specifying the desired length on the web site at time of order or by contacting a sales representative. Other available RF cable assembly value added services include connector orientation or clocking, heat shrink booting and custom labeling. RF testing can also be performed to document the electrical performance of your cable assembly.

#### Electrical Specifications

Description	Minimum	Typical	Maximum	Units
Frequency Range	DC		40	GHz
VSWR			1.4:1	
Velocity of Propagation		82		%
RF Shielding	100			dB

2.92mm Male to 2.92mm Female Bulkhead Low Loss Space Cable 18 Inch Length Using PE-R135LL Coax



**PE3C100018-18**

**Electrical Specifications**

Description	Minimum	Typical	Maximum	Units
Capacitance		25 [82.02]		pF/ft [pF/m]

**Specifications by Frequency**

Part Number	Length	Description	F1	F2	F3	F4	F5	Units	Weight (lbs)
			Frequency						
PE3C100018	Custom Lengths Available	Insertion Loss (Typ.)	0.161	0.237	0.35	0.528	0.808	dB/ft	
			0.53	0.78	1.15	1.74	2.66	dB/m	
PE3C100018-12	12 Inch	Insertion Loss (Typ.)	0.37	0.44	0.55	0.73	1.01	dB	0.07
PE3C100018-18	18 Inch	Insertion Loss (Typ.)	0.45	0.56	0.73	1	1.42	dB	0.084
PE3C100018-24	24 Inch	Insertion Loss (Typ.)	0.53	0.68	0.9	1.26	1.82	dB	0.097
PE3C100018-100CM	100 CM	Insertion Loss (Typ.)	0.73	0.98	1.35	1.94	2.86	dB	0.13
PE3C100018-200CM	200 CM	Insertion Loss (Typ.)	1.26	1.76	2.5	3.67	5.51	dB	0.215

The insertion loss data for the base model does not include loss due to the connectors. Each length includes insertion loss due to the connectors.

Loss due to Connector 1:	0.1 dB
Loss due to Connector 2:	0.1 dB
Base Weight:	0.07 pounds
Additional Weight per Inch:	0.00217 pounds

**Mechanical Specifications**

**Cable Assembly**

Length	18 in [457.2 mm]
Width/Diameter	0.437 in [11.1 mm]
Weight	0.084 lbs [38.1 g]

**Cable**

Cable Type	PE-R135LL
Impedance	50 Ohms
Inner Conductor Type	Solid
Inner Conductor Material and Plating	Copper, Silver
Dielectric Type	PTFE
Number of Shields	2
Shield Layer 1	Silver plated copper
Shield Layer 2	Silver plated copper
Jacket Material	ETFE, Black
Jacket Diameter	0.145 in [3.68 mm]
One Time Minimum Bend Radius	1.08 in [27.43 mm]

2.92mm Male to 2.92mm Female Bulkhead Low Loss  
Space Cable 18 Inch Length Using PE-R135LL Coax



## PE3C100018-18

### Connectors

Description	Connector 1	Connector 2
Type	2.92mm Male	2.92mm Female Bulkhead
Impedance	50 Ohms	50 Ohms
Configuration	Straight	Straight
Contact Material and Plating	Brass, Gold	Beryllium Copper, Gold
Contact Plating Specification	30 µin minimum	30 µin minimum
Dielectric Type	PTFE	PTFE
Body Material and Plating	Stainless Steel, Passivated	Stainless Steel, Passivated

### Environmental Specifications

Operating Range Temperature -65 to +150 deg C

**Compliance Certifications** (see [product page](#) for current document)

### Plotted and Other Data

Notes:  
Values at 25°C, sea level.

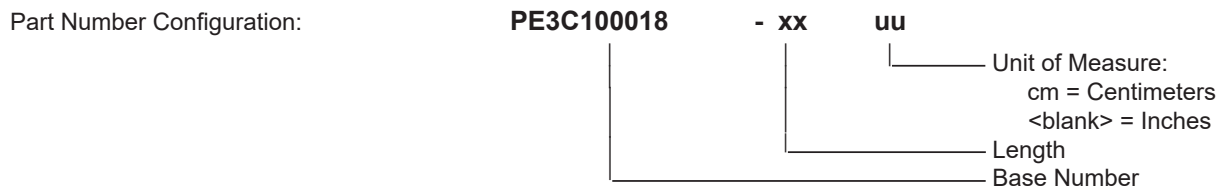
2.92mm Male to 2.92mm Female Bulkhead Low Loss Space Cable 18 Inch Length Using PE-R135LL Coax



**PE3C100018-18**

**Typical Performance Data**

**How to Order**



Example:    PE3C100018-12 = 12 inches long cable  
              PE3C100018-100cm = 100 cm long cable

2.92mm Male to 2.92mm Female Bulkhead Low Loss Space Cable 18 Inch Length Using PE-R135LL Coax from Pasternack Enterprises has same day shipment for domestic and International orders. Our RF, microwave and millimeter wave products maintain a 99.4% availability and are part of the broadest selection in the industry.

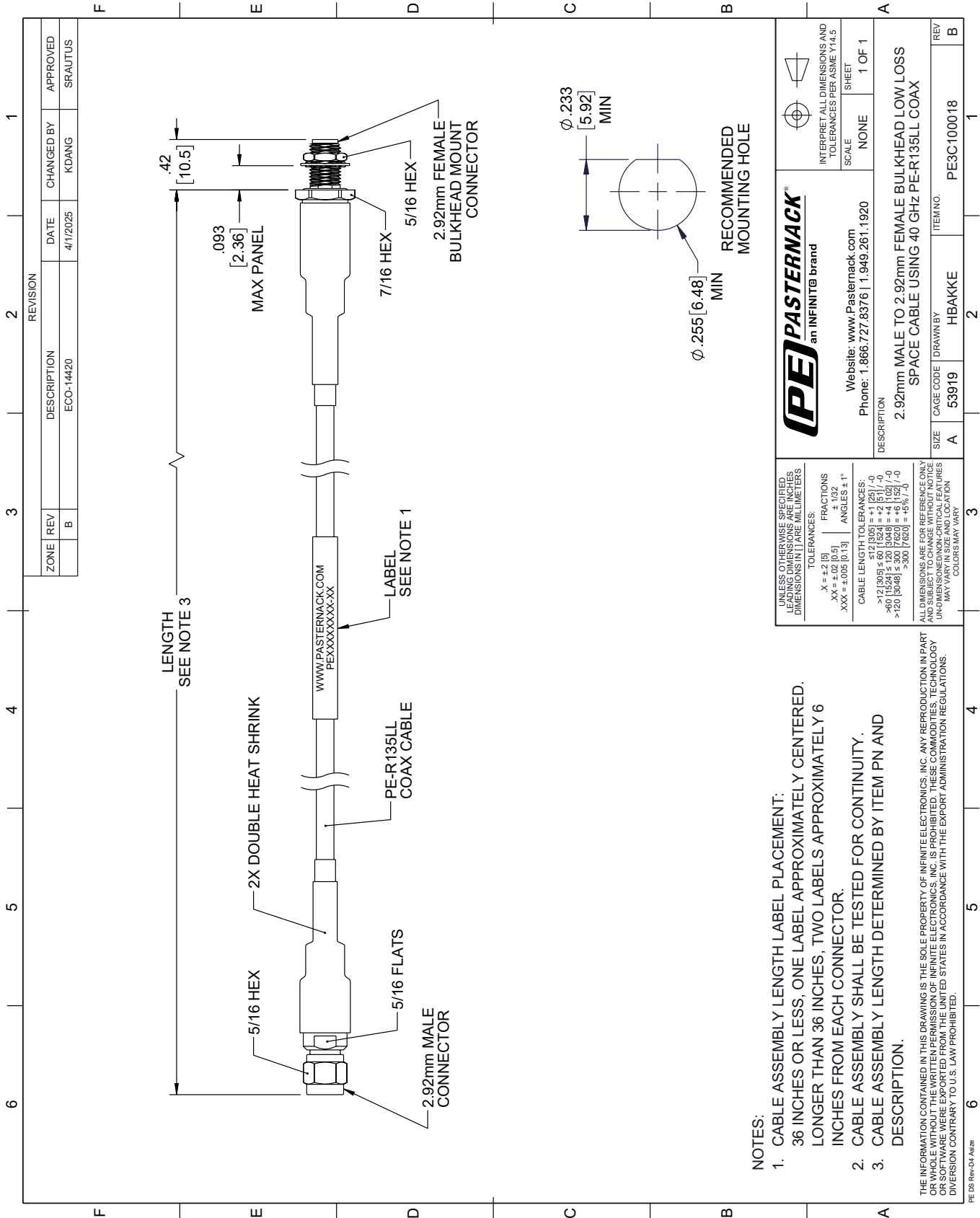
Click the following link (or enter part number in "SEARCH" on website) to obtain additional part information including price, inventory and certifications: [2.92mm Male to 2.92mm Female Bulkhead Low Loss Space Cable 18 Inch Length Using PE-R135LL Coax PE3C100018-18](https://www.pasternack.com/2.92mm-male-to-2.92mm-female-bulkhead-low-loss-space-cable-18-inch-length-using-pe-r135ll-pe3c100018-18-p.aspx)

URL: <https://www.pasternack.com/2.92mm-male-to-2.92mm-female-bulkhead-low-loss-space-cable-18-inch-length-using-pe-r135ll-pe3c100018-18-p.aspx>

The information contained within this document is accurate to the best of our knowledge and representative of the part described herein. It may be necessary to make modifications to the part and/or the documentation of the part in order to impliment improvements. Pasternack Enterprises reserves the right to make such changes as required. Unless otherwise stated, all specifications are nominal. Pasternack Enterprises does not make any representation or warranty regarding the suitability of the part described herein for any particular purpose, and Pasternack Enterprises does not assume liability arising out of the use of any part or document.

# PE3C100018-18 CAD Drawing

2.92mm Male to 2.92mm Female Bulkhead Low Loss Space Cable 18 Inch Length Using PE-R135LL Coax



**NOTES:**

1. CABLE ASSEMBLY LENGTH LABEL PLACEMENT: 36 INCHES OR LESS, ONE LABEL APPROXIMATELY CENTERED, LONGER THAN 36 INCHES, TWO LABELS APPROXIMATELY 6 INCHES FROM EACH CONNECTOR.
2. CABLE ASSEMBLY SHALL BE TESTED FOR CONTINUITY.
3. CABLE ASSEMBLY LENGTH DETERMINED BY ITEM PN AND DESCRIPTION.

THE INFORMATION CONTAINED IN THIS DRAWING IS THE SOLE PROPERTY OF INFINITE ELECTRONICS, INC. ANY REPRODUCTION IN PART OR WHOLE WITHOUT THE WRITTEN PERMISSION OF INFINITE ELECTRONICS, INC. IS PROHIBITED. THESE COMMODITIES, TECHNOLOGY OR SOFTWARE WERE EXPORTED FROM THE UNITED STATES IN ACCORDANCE WITH THE EXPORT ADMINISTRATION REGULATIONS. DIVERSION CONTRARY TO U.S. LAW PROHIBITED.

PE DS Rev-04 Add2

REVISION		DATE	CHANGED BY	APPROVED	
ZONE	REV	DESCRIPTION	ECO-14420	KDANG	SRAUTUS
	B				

<p><b>PASTERNAK</b> an INFINIT<sup>®</sup> brand</p>		<p>INTERPRET ALL DIMENSIONS AND TOLERANCES PER ASME Y14.5</p>
Website: <a href="http://www.Pasternack.com">www.Pasternack.com</a> Phone: 1.866.727.8376   1.949.261.1920		SCALE: NONE SHEET: 1 OF 1
DESCRIPTION: 2.92mm MALE TO 2.92mm FEMALE BULKHEAD LOW LOSS SPACE CABLE USING 40 GHz PE-R135LL COAX		
SIZE	CAGE CODE	ITEM NO.
A	53919	PE3C100018
DRAWN BY	REV	
HBAKKE	B	

UNLESS OTHERWISE SPECIFIED, LEADING DIMENSIONS ARE IN INCHES. DIMENSIONS IN [ ] ARE MILLIMETERS.

TOLERANCES:  
 .X = ±.2 (5)  
 .XX = ±.02 (0.5)  
 .XXX = ±.005 (0.13)  
 FRACTIONS: ± 1/32  
 ANGLES ± 1°

CABLE LENGTH TOLERANCES:  
 <12 (305) ≤ 60 (1524) = ±.1 (2.5) / -0  
 >60 (1524) ≤ 120 (3048) = ±.4 (10.2) / -0  
 >120 (3048) ≤ 300 (7620) = ±.8 (17.8) / -0

ALL DIMENSIONS ARE FOR REFERENCE ONLY. UNDIMENSIONS/NON-CRITICAL FEATURES MAY VARY IN SIZE AND LOCATION. COLORS MAY VARY.