

2.92mm Male to 2.92mm Female Low Loss Test Cable Using PE-TC154A Coax



PE3C100067

Configuration

- Connector 1: 2.92mm Male
- Connector 2: 2.92mm Female
- Cable Type: PE-TC154A
- Coax Flex Type: Flexible

Features

- Max Frequency 40 GHz
- 77% Phase Velocity
- Double Shielded
- Ruggedized Aramid yarn Jacket
- Excellent Phase and Loss Stability with Flexure
- Low Loss Performance

Applications

- General Purpose
- Test & Measurement
- Laboratory Use
- VNA Test Port Extenders
- Semiconductor Probe Testing
- Precise Bench-Top Testing
- Lab and Production Testing

Description

Pasternack's PE3C100067 2.92mm male to 2.92mm female cable using PE-TC154A coax is part of our full line of RF components available for same-day shipping. Pasternack's flexible RF cable assemblies are ideal for applications where tight bends and flexure are required. This Pasternack 2.92mm to 2.92mm cable assembly has a male to female gender configuration with 50 ohm flexible PE-TC154A coax. The PE3C100067 2.92mm male to 2.92mm female cable assembly operates to 40 GHz. The double shielding of this Pasternack cable assembly provides excellent shielding effectiveness.

Custom versions of most RF cable assemblies can be built and shipped same day. Custom cable assembly lengths can be obtained by specifying the desired length on the web site at time of order or by contacting a sales representative. Other available RF cable assembly value added services include connector orientation or clocking, heat shrink booting and custom labeling. RF testing can also be performed to document the electrical performance of your cable assembly.

Electrical Specifications

Description	Minimum	Typical	Maximum	Units
Frequency Range	DC		40	GHz
VSWR			1.4:1	
Velocity of Propagation		77		%
Phase Stability with Flexure		14		Degrees
Loss Stability with Flexure		0.1		dB

Specifications by Frequency

2.92mm Male to 2.92mm Female Low Loss
Test Cable Using PE-TC154A Coax



PE3C100067

Part Number	Length	Description	F1	F2	F3	F4	F5	Units	Weight (lbs)
			Frequency		2500	5000	10000	20000	
PE3C100067	Custom Lengths Available	Insertion Loss (Typ.)	0.18	0.262	0.383	0.568	0.853	dB/ft	
			0.6	0.86	1.26	1.87	2.8	dB/m	
PE3C100067-12	12 In	Insertion Loss (Typ.)	0.31	0.45	0.64	0.93	1.36	dB	0.432
PE3C100067-24	24 In	Insertion Loss (Typ.)	0.49	0.71	1.02	1.5	2.22	dB	0.464
PE3C100067-36	36 In	Insertion Loss (Typ.)	0.67	0.97	1.41	2.07	3.07	dB	0.496
PE3C100067-100CM	100 CM	Insertion Loss (Typ.)	0.72	1.04	1.51	2.23	3.31	dB	0.505
PE3C100067-150CM	150 Cm	Insertion Loss (Typ.)	1.02	1.47	2.14	3.16	4.71	dB	0.557

The insertion loss data for the base model does not include loss due to the connectors. Each length includes insertion loss due to the connectors.

Loss due to Connector 1: 0.4*SQRT(FGHz) dB
 Loss due to Connector 2: 0.4*SQRT(FGHz) dB
 Base Weight: 0.432 pounds
 Additional Weight per Inch: 0.002667 pounds

Mechanical Specifications

Cable Assembly

Width/Diameter 0.5 in [12.7 mm]
 Weight 0.432 lbs [195.95 g]

Cable

Cable Type PE-TC154A
 Impedance 50 Ohms
 Inner Conductor Type Stranded
 Inner Conductor Material and Plating Copper, Silver
 Dielectric Type PTFE
 Number of Shields 2
 Shield Layer 1 Silver Plated Copper
 Shield Layer 2 Silver Plated Copper Braid
 Jacket Material Ruggedized Aramid yarn
 Jacket Diameter 0.213 in [5.41 mm]
 Repeated Minimum Bend Radius 0.98 in [24.89 mm]

2.92mm Male to 2.92mm Female Low Loss
Test Cable Using PE-TC154A Coax



PE3C100067

Connectors

Description	Connector 1	Connector 2
Type	2.92mm Male	2.92mm Female
Impedance	50 Ohms	50 Ohms
Configuration	Straight	Straight
Contact Material and Plating	Beryllium Copper, Gold	Beryllium Copper, Gold
Dielectric Type	Polystyrene	Polystyrene
Outer Conductor Material and Plating		Passivated Stainless Steel
Body Material and Plating	Passivated Stainless Steel	Passivated Stainless Steel
Coupling Nut Material and Plating	Passivated Stainless Steel	

Environmental Specifications

Operating Range Temperature -40 to +100 deg C

Compliance Certifications (see [product page](#) for current document)

Plotted and Other Data

Notes:

2.92mm Male to 2.92mm Female Low Loss Test Cable Using PE-TC154A Coax



PE3C100067

Typical Performance Data

How to Order

Part Number Configuration:

PE3C100067

- **xx**

uu

Unit of Measure:
cm = Centimeters
<blank> = Inches
Length
Base Number

Example: PE3C100067-12 = 12 inches long cable
PE3C100067-100cm = 100 cm long cable

2.92mm Male to 2.92mm Female Low Loss Test Cable Using PE-TC154A Coax from Pasternack Enterprises has same day shipment for domestic and International orders. Our RF, microwave and millimeter wave products maintain a 99.4% availability and are part of the broadest selection in the industry.

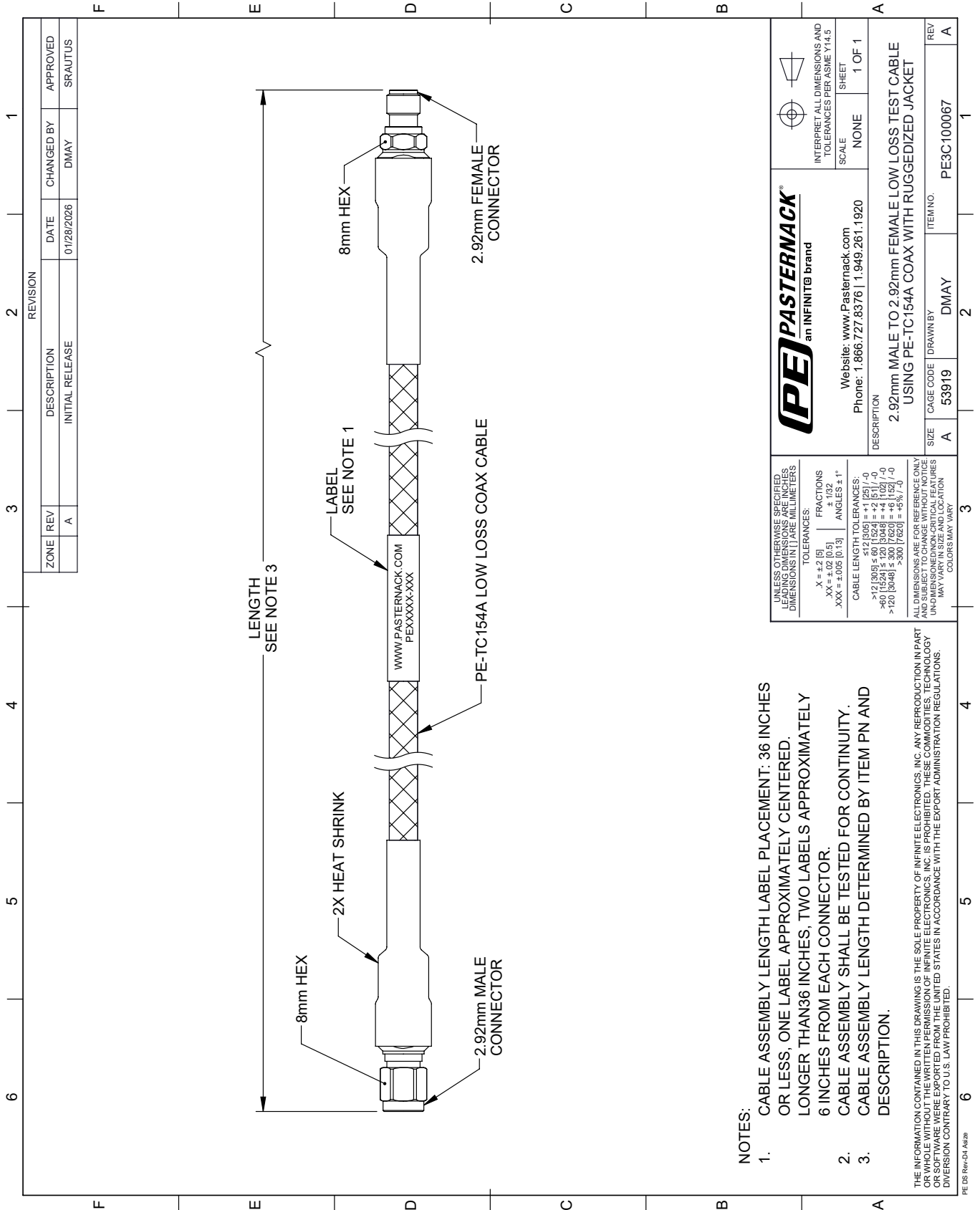
Click the following link (or enter part number in "SEARCH" on website) to obtain additional part information including price, inventory and certifications: [2.92mm Male to 2.92mm Female Low Loss Test Cable Using PE-TC154A Coax PE3C100067](https://www.pasternack.com/2.92mm-male-to-2.92mm-female-low-loss-test-cable-using-pe-tc154a-pe3c100067-p.aspx)

URL: <https://www.pasternack.com/2.92mm-male-to-2.92mm-female-low-loss-test-cable-using-pe-tc154a-pe3c100067-p.aspx>

The information contained within this document is accurate to the best of our knowledge and representative of the part described herein. It may be necessary to make modifications to the part and/or the documentation of the part in order to implement improvements. Pasternack Enterprises reserves the right to make such changes as required. Unless otherwise stated, all specifications are nominal. Pasternack Enterprises does not make any representation or warranty regarding the suitability of the part described herein for any particular purpose, and Pasternack Enterprises does not assume liability arising out of the use of any part or document.

PE3C100067 CAD Drawing

2.92mm Male to 2.92mm Female Low Loss Test Cable Using PE-TC154A Coax



NOTES:

1. CABLE ASSEMBLY LENGTH LABEL PLACEMENT: 36 INCHES OR LESS, ONE LABEL APPROXIMATELY CENTERED. LONGER THAN 36 INCHES, TWO LABELS APPROXIMATELY 6 INCHES FROM EACH CONNECTOR.
2. CABLE ASSEMBLY SHALL BE TESTED FOR CONTINUITY.
3. CABLE ASSEMBLY LENGTH DETERMINED BY ITEM PN AND DESCRIPTION.

THE INFORMATION CONTAINED IN THIS DRAWING IS THE SOLE PROPERTY OF INFINITE ELECTRONICS, INC. ANY REPRODUCTION IN PART OR WHOLE WITHOUT THE WRITTEN PERMISSION OF INFINITE ELECTRONICS, INC. IS PROHIBITED. THESE COMMODITIES, TECHNOLOGY OR SOFTWARE WERE EXPORTED FROM THE UNITED STATES IN ACCORDANCE WITH THE EXPORT ADMINISTRATION REGULATIONS. DIVERSION CONTRARY TO U.S. LAW PROHIBITED.

PE DS Rev-04 Add2

ZONE	REV	DESCRIPTION	DATE	CHANGED BY	APPROVED
A	A	INITIAL RELEASE	01/28/2026	DMAY	SRAUTUS

UNLESS OTHERWISE SPECIFIED, LEADING DIMENSIONS ARE IN INCHES AND TRAILING DIMENSIONS ARE IN MILLIMETERS	TOLERANCES:		FRACTIONS		ANGLES	
	X = ±.2 [5]	.XX = ±.02 [0.5]	.XXX = ±.005 [0.13]	±.1/32	±.1/32	±.1/32
	CABLE LENGTH TOLERANCES:					
	>12 [305]	≤ 60 [1524]	±.02 [0.51]	-0	±.02 [0.51]	-0
	>60 [1524]	≤ 120 [3048]	±.04 [1.02]	-0	±.04 [1.02]	-0
	>120 [3048]	≤ 300 [7620]	±.05 [1.27]	-0	±.05 [1.27]	-0
	>300 [7620]	≤ 600 [15240]	±.07 [1.78]	-0	±.07 [1.78]	-0
	ALL DIMENSIONS ARE FOR REFERENCE ONLY. UNLESS OTHERWISE SPECIFIED, DIMENSIONS ARE NON-CRITICAL FEATURES. DIMENSIONS MAY VARY.					

DESCRIPTION	SIZE	CAGE CODE	DRAWN BY	ITEM NO.
2.92mm MALE TO 2.92mm FEMALE LOW LOSS TEST CABLE USING PE-TC154A COAX WITH RUGGEDIZED JACKET	A	53919	DMAY	PE3C100067

SCALE	SHEET
NONE	1 OF 1

REV	DESCRIPTION
A	INITIAL RELEASE