

3.5mm Female to N Female Bulkhead Cable Using PE-SR402FL Coax

PE3C10094

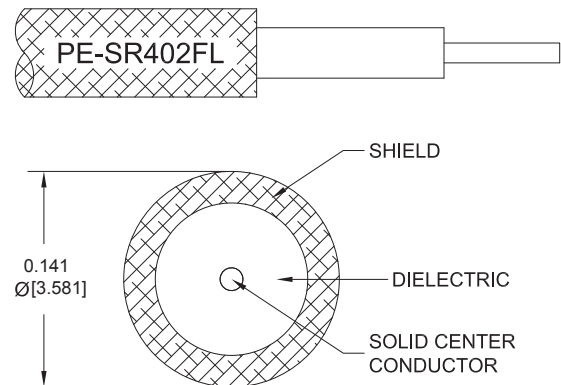


Configuration

- Connector 1: 3.5mm Female
- Connector 2: N Female Bulkhead
- Cable Type: PE-SR402FL
- Coax Flex Type: Formable

Features

- Max Frequency 11 GHz
- Shielding Effectivity > 110 dB
- 69.5% Phase Velocity



Applications

- General Purpose
- Laboratory Use

Description

Pasternack's PE3C10094 3.5mm female to type N female bulkhead cable using PE-SR402FL coax is part of our full line of RF components available for same-day shipping. Pasternack's formable RF cable assemblies provide an alternative to costly pre-formed semi-rigid assemblies since they are hand formable. This Pasternack 3.5mm to type N cable assembly has a female to female gender configuration with 50 ohm formable PE-SR402FL coax. The PE3C10094 3.5mm female to type N female cable assembly operates to 11 GHz. Our RF cable assembly with type N bulkhead interface allows designers to create external connections on their product enclosures, and can be used in a variety of other rack mount and panel mount applications.

Custom versions of most RF cable assemblies can be built and shipped same day. Custom cable assembly lengths can be obtained by specifying the desired length on the web site at time of order or by contacting a sales representative. Other available RF cable assembly value added services include connector orientation or clocking, heat shrink booting and custom labeling. RF testing can also be performed to document the electrical performance of your cable assembly.

Electrical Specifications

Description	Minimum	Typical	Maximum	Units
Frequency Range	DC		11	GHz
VSWR			1.4:1	
Velocity of Propagation		69.5		%
RF Shielding	110			dB
Capacitance		29 [95.14]		pF/ft [pF/m]
DC Resistance Inner Conductor		7.8 [25.59]		Ohms/1000ft [Ohms/Km]
DC Resistance Outer Conductor		5.5 [18.04]		Ohms/1000ft [Ohms/Km]

Specifications by Frequency

3.5mm Female to N Female Bulkhead Cable Using PE-SR402FL Coax

PE3C10094



Part Number	Length	Description	F1	F2	F3	F4	F5	Units	Weight (lbs)
		Frequency	500	1000	2500	5000	11000	MHz	
PE3C10094	Custom Lengths Available	Insertion Loss (Typ.)	0.08	0.12	0.183	0.29	0.475	dB/ft	
			0.27	0.4	0.61	0.96	1.56	dB/m	
PE3C10094-6	6 Inch	Insertion Loss (Typ.)	0.24	0.26	0.3	0.35	0.44	dB	0.111
PE3C10094-9	9 Inch	Insertion Loss (Typ.)	0.26	0.29	0.34	0.42	0.56	dB	0.117
PE3C10094-12	12 Inch	Insertion Loss (Typ.)	0.28	0.32	0.39	0.49	0.68	dB	0.123
PE3C10094-18	18 Inch	Insertion Loss (Typ.)	0.32	0.38	0.48	0.64	0.92	dB	0.136
PE3C10094-24	24 Inch	Insertion Loss (Typ.)	0.36	0.44	0.57	0.78	1.15	dB	0.149

The insertion loss data for the base model does not include loss due to the connectors. Each length includes insertion loss due to the connectors.

Loss due to Connector 1:	0.1 dB
Loss due to Connector 2:	0.1 dB
Base Weight:	0.123 pounds
Additional Weight per Inch:	0.00209 pounds

Mechanical Specifications

Cable Assembly

Width/Diameter	0.5 in [12.7 mm]
Weight	0.123 lbs [55.79 g]

Cable

Cable Type	PE-SR402FL
Impedance	50 Ohms
Inner Conductor Type	Solid
Inner Conductor Material and Plating	Copper, Silver
Dielectric Type	PTFE
Outer Conductor 1 Material and Plating	Tinned Copper Braid
Repeated Minimum Bend Radius	0.625 in [15.88 mm]

Connectors

Description	Connector 1	Connector 2
Type	3.5mm Female	N Female Bulkhead
Impedance	50 Ohms	50 Ohms
Configuration	Straight	Straight
Contact Material and Plating	Beryllium Copper, Gold over Nickel	Phosphor Bronze, Gold over Nickel
Contact Plating Specification	50 µin minimum	
Dielectric Type	PCTFE	PTFE
Body Material and Plating	Passivated Stainless Steel	Brass, Nickel
Body Plating Specification	SAE-AMS-2700	

3.5mm Female to N Female Bulkhead Cable Using PE-SR402FL Coax

PE3C10094



Environmental Specifications

Compliance Certifications (see [product page](#) for current document)

Plotted and Other Data

Notes:

Typical Performance Data

How to Order

Part Number Configuration:

PE3C10094 - xx uu

Unit of Measure:
cm = Centimeters
<blank> = Inches
Length
Base Number

Example: PE3C10094-12 = 12 inches long cable
PE3C10094-100cm = 100 cm long cable

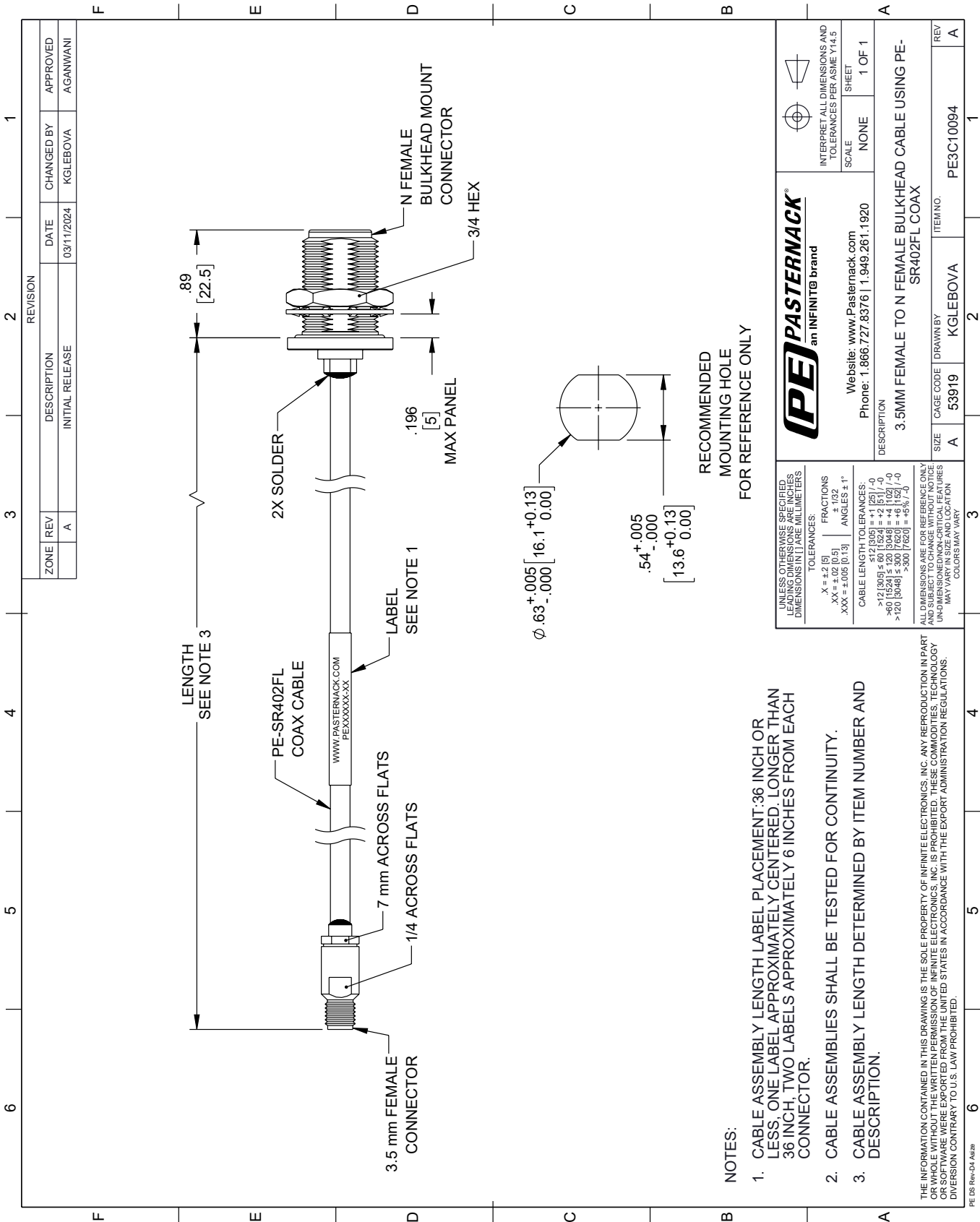
3.5mm Female to N Female Bulkhead Cable Using PE-SR402FL Coax from Pasternack Enterprises has same day shipment for domestic and International orders. Our RF, microwave and millimeter wave products maintain a 99.4% availability and are part of the broadest selection in the industry.

Click the following link (or enter part number in "SEARCH" on website) to obtain additional part information including price, inventory and certifications: [3.5mm Female to N Female Bulkhead Cable Using PE-SR402FL Coax PE3C10094](#)

URL: <https://www.pasternack.com/3.5mm-female-to-n-female-bulkhead-cable-using-pe-sr402fl-pe3c10094-p.aspx>

The information contained within this document is accurate to the best of our knowledge and representative of the part described herein. It may be necessary to make modifications to the part and/or the documentation of the part in order to implement improvements. Pasternack Enterprises reserves the right to make such changes as required. Unless otherwise stated, all specifications are nominal. Pasternack Enterprises does not make any representation or warranty regarding the suitability of the part described herein for any particular purpose, and Pasternack Enterprises does not assume liability arising out of the use of any part or document.

PE3C10094 CAD Drawing
3.5mm Female to N Female Bulkhead Cable Using PE-SR402FL Coax



PE PASTERNAK an INFINITE brand		Website: www.Pasternack.com Phone: 1.866.727.8376 1.949.261.1920	INTERPRET ALL DIMENSIONS AND TOLERANCES PER ASME Y14.5
UNLESS OTHERWISE SPECIFIED, ALL DIMENSIONS ARE IN INCHES. DIMENSIONS IN [] ARE IN MILLIMETERS.		TOLERANCES: X = ±.2 [5] .XX = ±.02 [0.5] .XXX = ±.005 [0.13]	SCALE: NONE SHEET: 1 OF 1
ANGLES ± 1°		CABLE LENGTH TOLERANCES: >12 [305] ≤ 60 [1524] = ±.125 [-.0] >60 [1524] ≤ 120 [3048] = ±.125 [-.0] >120 [3048] ≤ 300 [7620] = ±.125 [-.0] >300 [7620] = ±.125 [-.0]	DESCRIPTION 3.5MM FEMALE TO N FEMALE BULKHEAD CABLE USING PE-SR402FL COAX
ALL DIMENSIONS ARE FOR REFERENCE ONLY. UNLESS OTHERWISE SPECIFIED, DIMENSIONS ARE IN INCHES. DIMENSIONS IN [] ARE IN MILLIMETERS. UNLESS OTHERWISE SPECIFIED, DIMENSIONS ARE IN INCHES. DIMENSIONS IN [] ARE IN MILLIMETERS. COLORS MAY VARY.		SIZE: A CAGE CODE: 53919 DRAWN BY: KGLEBOVA ITEM NO.: PE3C10094	REV: A

- NOTES:
- CABLE ASSEMBLY LENGTH LABEL PLACEMENT: 36 INCH OR LESS, ONE LABEL APPROXIMATELY CENTERED. LONGER THAN 36 INCH, TWO LABELS APPROXIMATELY 6 INCHES FROM EACH CONNECTOR.
 - CABLE ASSEMBLIES SHALL BE TESTED FOR CONTINUITY.
 - CABLE ASSEMBLY LENGTH DETERMINED BY ITEM NUMBER AND DESCRIPTION.

THE INFORMATION CONTAINED IN THIS DRAWING IS THE SOLE PROPERTY OF INFINITE ELECTRONICS, INC. ANY REPRODUCTION IN PART OR WHOLE WITHOUT THE WRITTEN PERMISSION OF INFINITE ELECTRONICS, INC. IS PROHIBITED. THESE COMMODITIES, TECHNOLOGY OR SOFTWARE WERE EXPORTED FROM THE UNITED STATES IN ACCORDANCE WITH THE EXPORT ADMINISTRATION REGULATIONS. DIVISION CONTRARY TO U.S. LAW PROHIBITED.

PE DS Rev-D4 Adda