

Plenum SMA Male to SMA Male Low Loss Cable Using LMR-240-LLPX Coax with Times Microwave Components



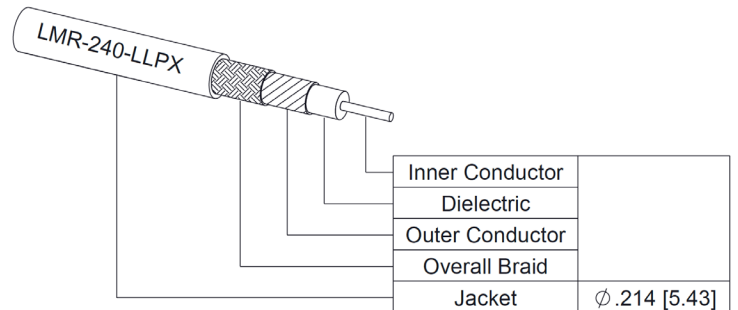
PE3C10285

Configuration

- Connector 1: SMA Male
- Connector 2: SMA Male
- Cable Type: LMR-240-LLPX

Features

- Max Frequency 6 GHz
- Shielding Effectivity > 90 dB
- 76% Phase Velocity
- Fluoropolymer Jacket



Applications

- General Purpose
- Laboratory Use

Description

Pasternack's PE3C10285 SMA male to SMA male cable using LMR-240-LLPX coax is part of our full line of RF components available for same-day shipping. This Pasternack SMA to SMA cable assembly has a male to male gender configuration with 50 ohm LMR-240-LLPX coax. The PE3C10285 SMA male to SMA male cable assembly operates to 6 GHz.

Custom versions of most RF cable assemblies can be built and shipped same day. Custom cable assembly lengths can be obtained by specifying the desired length on the web site at time of order or by contacting a sales representative. Other available RF cable assembly value added services include connector orientation or clocking, heat shrink booting and custom labeling. RF testing can also be performed to document the electrical performance of your cable assembly.

Electrical Specifications

Description	Minimum	Typical	Maximum	Units
Frequency Range	DC		6	GHz
VSWR			1.4:1	
Velocity of Propagation		76		%
RF Shielding	90			dB
Capacitance		26.7 [87.6]		pF/ft [pF/m]
Inductance		0.067 [0.22]		uH/ft [uH/m]
DC Resistance Inner Conductor		4 [13.12]		Ohms/1000ft [Ohms/Km]
DC Resistance Outer Conductor		3.9 [12.8]		Ohms/1000ft [Ohms/Km]
Jacket Spark			5,000	Vrms

Specifications by Frequency

Plenum SMA Male to SMA Male Low Loss Cable Using LMR-240-LLPX Coax with Times Microwave Components



PE3C10285

Part Number	Length	Description	F1	F2	F3	F4	F5	Units	Weight (lbs)
			Frequency	250	500	1000	2500		
PE3C10285	Custom Lengths Available	Insertion Loss (Typ.)	0.038	0.056	0.079	0.129	0.203	dB/ft	
			0.13	0.19	0.26	0.43	0.67	dB/m	
PE3C10285-12	12 Inch	Insertion Loss (Typ.)	0.24	0.26	0.28	0.33	0.41	dB	0.075
PE3C10285-24	24 Inch	Insertion Loss (Typ.)	0.28	0.32	0.36	0.46	0.61	dB	0.111
PE3C10285-36	36 Inch	Insertion Loss (Typ.)	0.32	0.37	0.44	0.59	0.81	dB	0.146
PE3C10285-48	48 Inch	Insertion Loss (Typ.)	0.36	0.43	0.52	0.72	1.02	dB	0.181
PE3C10285-60	60 Inch	Insertion Loss (Typ.)	0.39	0.48	0.6	0.85	1.22	dB	0.216

The insertion loss data for the base model does not include loss due to the connectors. Each length includes insertion loss due to the connectors.

Loss due to Connector 1:	0.1 dB
Loss due to Connector 2:	0.1 dB
Base Weight:	0.075 pounds
Additional Weight per Inch:	0.4983 pounds

Mechanical Specifications

Cable Assembly

Width/Diameter	0.5 in [12.7 mm]
Weight	0.075 lbs [34.02 g]

Cable

Cable Type	LMR-240-LLPX
Impedance	50 Ohms
Inner Conductor Material and Plating	Copper
Dielectric Type	PTFE
Outer Conductor 1 Material and Plating	Aluminum Tape
Jacket Material	Fluoropolymer
Jacket Diameter	0.214 in [5.44 mm]
One Time Minimum Bend Radius	0.75 in [19.05 mm]
Repeated Minimum Bend Radius	2.5 in [63.5 mm]
Flat Plate Crush	85 lbs/in [1.52 Kg/mm]
Tensile Strength	60 lbs [27.22 Kg]

Plenum SMA Male to SMA Male Low Loss Cable Using LMR-240-LLPX Coax with Times Microwave Components



PE3C10285

Connectors

Description	Connector 1	Connector 2
Type	SMA Male	SMA Male
Specification	MIL-STD-348	MIL-STD-348
Impedance	50 Ohms	50 Ohms
Configuration	Straight	Straight
Contact Material and Plating	Beryllium Copper, Gold	Beryllium Copper, Gold
Contact Plating Specification	ASTM B488	ASTM B488
Dielectric Type	PTFE	PTFE
Outer Conductor Material and Plating	Brass, Tri-Metal	Brass, Tri-Metal
Body Material and Plating	Brass, Tri-Metal	Brass, Tri-Metal
Coupling Nut Material and Plating	Brass, Tri-Metal	Brass, Tri-Metal
Hex Size	5/16 Inch	5/16 Inch

Environmental Specifications

Operating Range Temperature -40 to +125 deg C

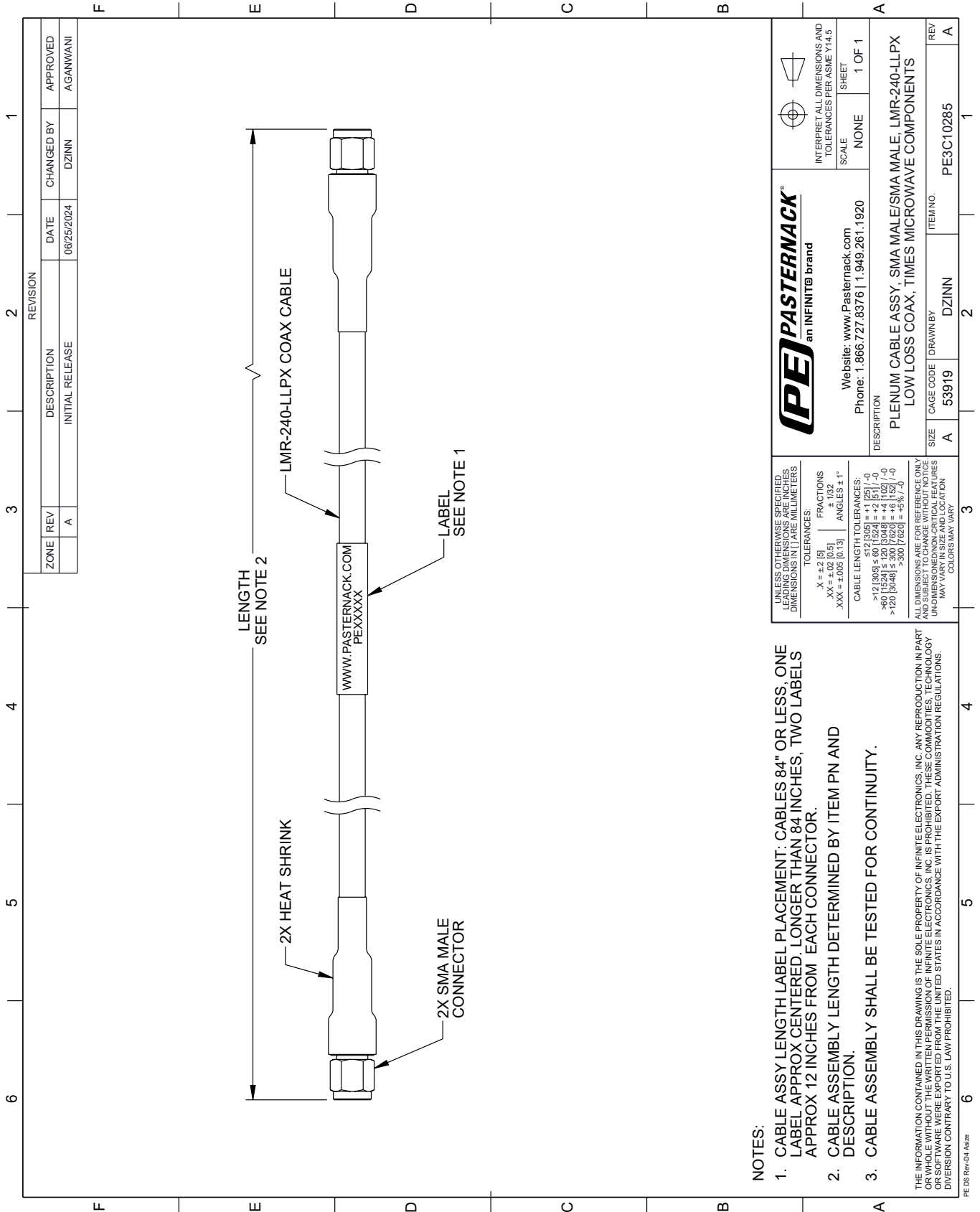
Compliance Certifications (see [product page](#) for current document)

Plotted and Other Data

Notes:

PE3C10285 CAD Drawing

Plenum SMA Male to SMA Male Low Loss Cable Using LMR-240-LLPX Coax with Times Microwave Components



NOTES:

1. CABLE ASSY LENGTH LABEL PLACEMENT: CABLES 84" OR LESS, ONE LABEL APPROX CENTERED, LONGER THAN 84 INCHES, TWO LABELS APPROX 12 INCHES FROM EACH CONNECTOR.
2. CABLE ASSEMBLY LENGTH DETERMINED BY ITEM PN AND DESCRIPTION.
3. CABLE ASSEMBLY SHALL BE TESTED FOR CONTINUITY.

THE INFORMATION CONTAINED IN THIS DRAWING IS THE SOLE PROPERTY OF INFINITE ELECTRONICS, INC. ANY REPRODUCTION IN PART OR WHOLE WITHOUT THE WRITTEN PERMISSION OF INFINITE ELECTRONICS, INC. IS PROHIBITED. THESE COMMODITIES, TECHNOLOGY OR SERVICE WERE EXPORTED FROM THE UNITED STATES IN ACCORDANCE WITH THE EXPORT ADMINISTRATION REGULATIONS. DIVISION CONTRARY TO U.S. LAW PROHIBITED.

PE DS Rev-04 Add2

REVISION		DATE	CHANGED BY	APPROVED	
ZONE	REV	DESCRIPTION	DATE	CHANGED BY	APPROVED
	A	INITIAL RELEASE	08/25/2024	DZINN	AGANWANI

 an INFINITE brand		 INTERPRET ALL DIMENSIONS AND TOLERANCES PER ASME Y14.5
Website: www.Pasternack.com Phone: 1.866.727.8376 1.949.261.1920		SCALE: NONE SHEET: 1 OF 1
DESCRIPTION: PLENUM CABLE ASSY, SMA MALE/SMA MALE, LMR-240-LLPX LOW LOSS COAX, TIMES MICROWAVE COMPONENTS		
SIZE	CAGE CODE	ITEM NO.
A	53919	DZINN
DRAWN BY: DZINN		REV: A

UNLESS OTHERWISE SPECIFIED, LEADING DIMENSIONS ARE IN INCHES, DIMENSIONS IN [] ARE MILLIMETERS.

TOLERANCES:
 .X = ±.2 [5]
 .XX = ±.02 [0.5]
 .XXX = ±.005 [0.13]

FRACTIONS: ± 1/32
 ANGLES ± 1°

CABLE LENGTH TOLERANCES:
 <12 [305] ≤ 60 [1524] = ±.1 [25] / -0
 >60 [1524] ≤ 120 [3048] = ±.4 [102] / -0
 >120 [3048] ≤ 300 [7620] = ±.6 [152] / -0
 >300 [7620] = ±.8 [203] / -0

ALL DIMENSIONS ARE FOR REFERENCE ONLY. UNLESS OTHERWISE SPECIFIED, DIMENSIONS ARE UNDIMENSIONED/NON-CRITICAL FEATURES. MAY VARY IN SIZE AND LOCATION. COLORS MAY VARY.