

Plenum SMA Male to TNC Male Low Loss Cable Using LMR-240-LLPX Coax with Times Microwave Components



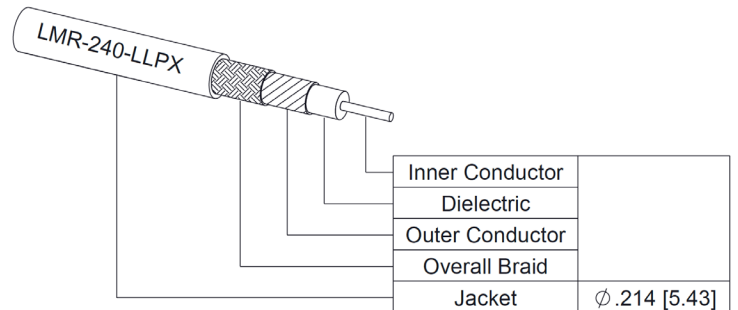
PE3C10286

Configuration

- Connector 1: SMA Male
- Connector 2: TNC Male
- Cable Type: LMR-240-LLPX

Features

- Max Frequency 6 GHz
- Shielding Effectivity > 90 dB
- 76% Phase Velocity
- Fluoropolymer Jacket



Applications

- General Purpose
- Laboratory Use

Description

Pasternack's PE3C10286 SMA male to TNC male cable using LMR-240-LLPX coax is part of our full line of RF components available for same-day shipping. This Pasternack SMA to TNC cable assembly has a male to male gender configuration with 50 ohm LMR-240-LLPX coax. The PE3C10286 SMA male to TNC male cable assembly operates to 6 GHz.

Custom versions of most RF cable assemblies can be built and shipped same day. Custom cable assembly lengths can be obtained by specifying the desired length on the web site at time of order or by contacting a sales representative. Other available RF cable assembly value added services include connector orientation or clocking, heat shrink booting and custom labeling. RF testing can also be performed to document the electrical performance of your cable assembly.

Electrical Specifications

Description	Minimum	Typical	Maximum	Units
Frequency Range	DC		6	GHz
VSWR			1.4:1	
Velocity of Propagation		76		%
RF Shielding	90			dB
Capacitance		26.7 [87.6]		pF/ft [pF/m]
Inductance		0.067 [0.22]		uH/ft [uH/m]
DC Resistance Inner Conductor		4 [13.12]		Ohms/1000ft [Ohms/Km]
DC Resistance Outer Conductor		3.9 [12.8]		Ohms/1000ft [Ohms/Km]
Jacket Spark			5,000	Vrms

Specifications by Frequency

Plenum SMA Male to TNC Male Low Loss Cable Using LMR-240-LLPX Coax with Times Microwave Components



PE3C10286

Part Number	Length	Description	F1	F2	F3	F4	F5	Units	Weight (lbs)
			Frequency	250	500	1000	2500	6000	
PE3C10286	Custom Lengths Available	Insertion Loss (Typ.)	0.038	0.056	0.079	0.129	0.203	dB/ft	
			0.13	0.19	0.26	0.43	0.67	dB/m	
PE3C10286-12	12 Inch	Insertion Loss (Typ.)	0.24	0.26	0.28	0.33	0.41	dB	0.105
PE3C10286-24	24 Inch	Insertion Loss (Typ.)	0.28	0.32	0.36	0.46	0.61	dB	0.141
PE3C10286-36	36 Inch	Insertion Loss (Typ.)	0.32	0.37	0.44	0.59	0.81	dB	0.176
PE3C10286-48	48 Inch	Insertion Loss (Typ.)	0.36	0.43	0.52	0.72	1.02	dB	0.211
PE3C10286-60	60 Inch	Insertion Loss (Typ.)	0.39	0.48	0.6	0.85	1.22	dB	0.246

The insertion loss data for the base model does not include loss due to the connectors. Each length includes insertion loss due to the connectors.

Loss due to Connector 1:	0.1 dB
Loss due to Connector 2:	0.1 dB
Base Weight:	0.105 pounds
Additional Weight per Inch:	0.4983 pounds

Mechanical Specifications

Cable Assembly

Width/Diameter	0.5 in [12.7 mm]
Weight	0.105 lbs [47.63 g]

Cable

Cable Type	LMR-240-LLPX
Impedance	50 Ohms
Inner Conductor Material and Plating	Copper
Dielectric Type	PTFE
Outer Conductor 1 Material and Plating	Aluminum Tape
Jacket Material	Fluoropolymer
Jacket Diameter	0.214 in [5.44 mm]
One Time Minimum Bend Radius	0.75 in [19.05 mm]
Repeated Minimum Bend Radius	2.5 in [63.5 mm]
Flat Plate Crush	85 lbs/in [1.52 Kg/mm]
Tensile Strength	60 lbs [27.22 Kg]

Plenum SMA Male to TNC Male Low Loss Cable Using LMR-240-LLPX Coax with Times Microwave Components



PE3C10286

Connectors

Description	Connector 1	Connector 2
Type	SMA Male	TNC Male
Specification	MIL-STD-348	
Impedance	50 Ohms	50 Ohms
Configuration	Straight	Straight
Mating Cycles		500
Contact Material and Plating	Beryllium Copper, Gold	Phosphor Bronze, Gold
Contact Plating Specification	ASTM B488	50µ in. minimum
Dielectric Type	PTFE	Teflon
Outer Conductor Material and Plating	Brass, Tri-Metal	
Body Material and Plating	Brass, Tri-Metal	Brass, Tri-Metal
Body Plating Specification		80µ in. minimum
Coupling Nut Material and Plating	Brass, Tri-Metal	Brass, Tri-Metal
Coupling Nut Plating Specification		80µ in. minimum
Hex Size	5/16 Inch	
Torque		20 in-lbs 2.26 Nm

Environmental Specifications

Operating Range Temperature -40 to +125 deg C

Compliance Certifications (see [product page](#) for current document)

Plotted and Other Data

Notes:

Plenum SMA Male to TNC Male Low Loss Cable Using LMR-240-LLPX Coax with Times Microwave Components



PE3C10286

Typical Performance Data

How to Order

Part Number Configuration:

PE3C10286

- **xx**

uu

Unit of Measure:

cm = Centimeters

<blank> = Inches

Length

Base Number

Example: PE3C10286-12 = 12 inches long cable
PE3C10286-100cm = 100 cm long cable

Plenum SMA Male to TNC Male Low Loss Cable Using LMR-240-LLPX Coax with Times Microwave Components from Pasternack Enterprises has same day shipment for domestic and International orders. Our RF, microwave and millimeter wave products maintain a 99.4% availability and are part of the broadest selection in the industry.

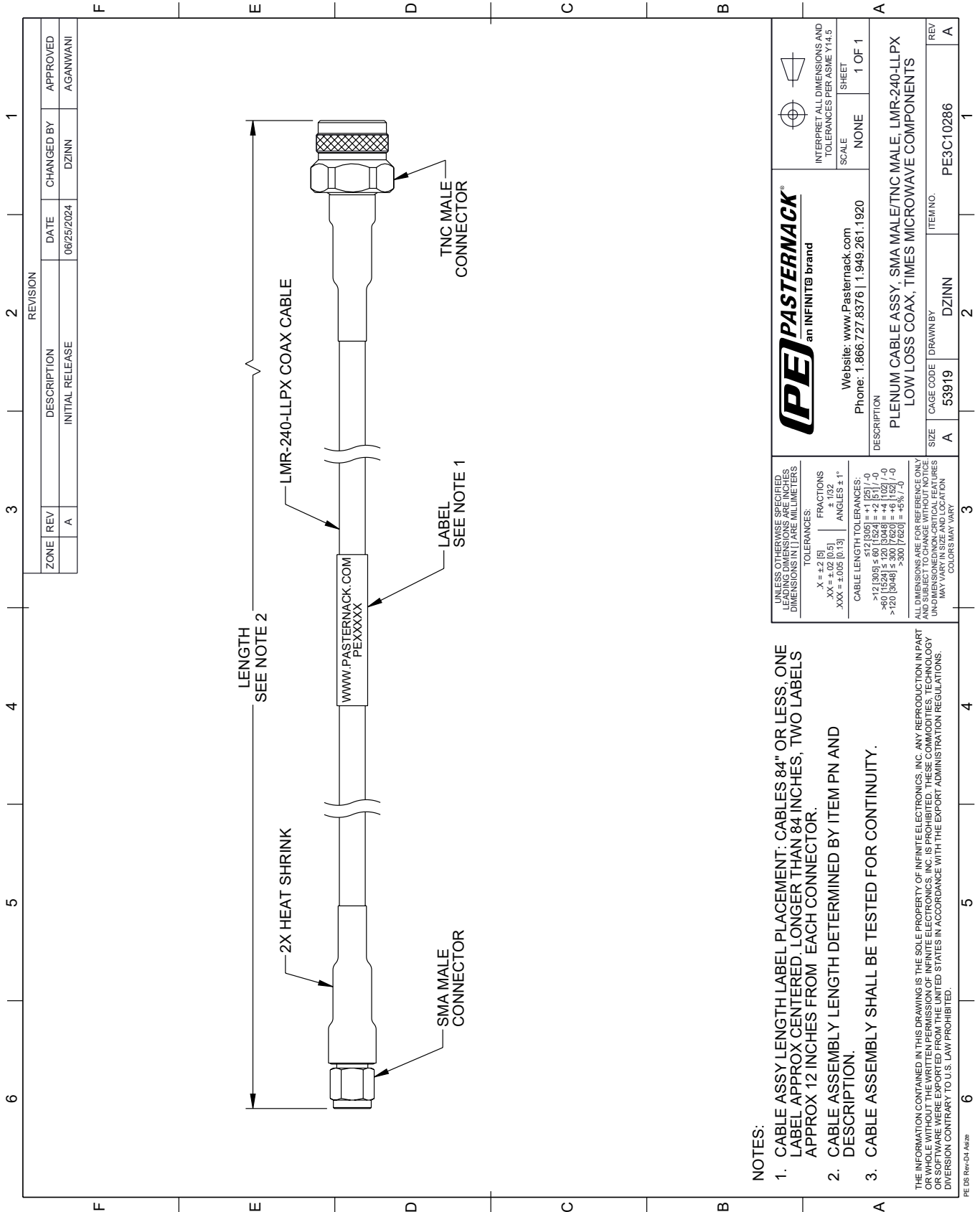
Click the following link (or enter part number in "SEARCH" on website) to obtain additional part information including price, inventory and certifications: [Plenum SMA Male to TNC Male Low Loss Cable Using LMR-240-LLPX Coax with Times Microwave Components PE3C10286](https://www.pasternack.com/plenum-sma-male-to-tnc-male-low-loss-cable-using-lmr-240-llpx-pe3c10286-p.aspx)

URL: <https://www.pasternack.com/plenum-sma-male-to-tnc-male-low-loss-cable-using-lmr-240-llpx-pe3c10286-p.aspx>

The information contained within this document is accurate to the best of our knowledge and representative of the part described herein. It may be necessary to make modifications to the part and/or the documentation of the part in order to implement improvements. Pasternack Enterprises reserves the right to make such changes as required. Unless otherwise stated, all specifications are nominal. Pasternack Enterprises does not make any representation or warranty regarding the suitability of the part described herein for any particular purpose, and Pasternack Enterprises does not assume liability arising out of the use of any part or document.

PE3C10286 CAD Drawing

Plenum SMA Male to TNC Male Low Loss Cable Using LMR-240-LLPX Coax with Times Microwave Components




NOTES:

1. CABLE ASSY LENGTH LABEL PLACEMENT: CABLES 84" OR LESS, ONE LABEL APPROX CENTERED, LONGER THAN 84 INCHES, TWO LABELS APPROX 12 INCHES FROM EACH CONNECTOR.
2. CABLE ASSEMBLY LENGTH DETERMINED BY ITEM PN AND DESCRIPTION.
3. CABLE ASSEMBLY SHALL BE TESTED FOR CONTINUITY.

THE INFORMATION CONTAINED IN THIS DRAWING IS THE SOLE PROPERTY OF INFINITE ELECTRONICS, INC. ANY REPRODUCTION IN PART OR WHOLE WITHOUT THE WRITTEN PERMISSION OF INFINITE ELECTRONICS, INC. IS PROHIBITED. THESE COMMODITIES, TECHNOLOGY OR SERVICE ARE EXPORTED FROM THE UNITED STATES IN ACCORDANCE WITH THE EXPORT ADMINISTRATION REGULATIONS. DIVERSION CONTRARY TO U.S. LAW PROHIBITED.

PE DS Rev-D4 Add2

 PASTERNAK an INFINITE brand		INTERPRET ALL DIMENSIONS AND TOLERANCES PER ASME Y14.5 SCALE NONE SHEET 1 OF 1	
Website: www.Pasternack.com Phone: 1.866.727.8376 1.949.261.1920			
DESCRIPTION PLENUM CABLE ASSY, SMA MALE/TNC MALE, LMR-240-LLPX LOW LOSS COAX, TIMES MICROWAVE COMPONENTS			
SIZE	CAGE CODE	DRAWN BY	ITEM NO.
A	53919	DZINN	PE3C10286

UNLESS OTHERWISE SPECIFIED, LEADING DIMENSIONS ARE IN INCHES. DIMENSIONS IN [] ARE MILLIMETERS.

TOLERANCES:
 .X = ±.2 [5]
 .XX = ±.02 [0.5]
 .XXX = ±.005 [0.13]

FRACTIONS
 ± 1/32
 ANGLES ± 1°

CABLE LENGTH TOLERANCES:
 <12 [305] ≤ 60 [1524] = ±.1 [2.5] / -0
 >60 [1524] ≤ 120 [3048] = ±.4 [10.2] / -0
 >120 [3048] ≤ 300 [7620] = ±.6 [15.2] / -0
 >300 [7620] = ±.8 [20.3] / -0

ALL DIMENSIONS ARE FOR REFERENCE ONLY. UNDIMENSIONED/NON-CRITICAL FEATURES MAY VARY IN SIZE AND LOCATION. COLORS MAY VARY.