

Plenum N Male to N Male Low Loss Cable Using LMR-600-LLPX Coax with Times Microwave Components



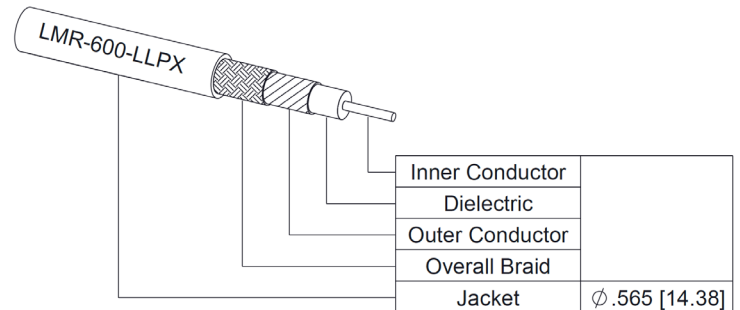
PE3C10288

Configuration

- Connector 1: N Male
- Connector 2: N Male
- Cable Type: LMR-600-LLPX

Features

- Max Frequency 6 GHz
- Shielding Effectivity > 90 dB
- 76% Phase Velocity
- Fluoropolymer Jacket



Applications

- General Purpose
- Laboratory Use

Description

Pasternack's PE3C10288 type N male to type N male cable using LMR-600-LLPX coax is part of our full line of RF components available for same-day shipping. This Pasternack type N to type N cable assembly has a male to male gender configuration with 50 ohm LMR-600-LLPX coax. The PE3C10288 type N male to type N male cable assembly operates to 6 GHz.

Custom versions of most RF cable assemblies can be built and shipped same day. Custom cable assembly lengths can be obtained by specifying the desired length on the web site at time of order or by contacting a sales representative. Other available RF cable assembly value added services include connector orientation or clocking, heat shrink booting and custom labeling. RF testing can also be performed to document the electrical performance of your cable assembly.

Electrical Specifications

Description	Minimum	Typical	Maximum	Units
Frequency Range	DC		6	GHz
VSWR			1.4:1	
Velocity of Propagation		76		%
RF Shielding	90			dB
DC Resistance Inner Conductor		0.73 [2.4]		Ohms/1000ft [Ohms/Km]
DC Resistance Outer Conductor		1.2 [3.94]		Ohms/1000ft [Ohms/Km]
Operating Voltage (DC)			4,000	Vdc
Jacket Spark			8,000	Vrms

Specifications by Frequency

Plenum N Male to N Male Low Loss Cable Using LMR-600-LLPX Coax with Times Microwave Components



PE3C10288

Part Number	Length	Description	F1	F2	F3	F4	F5	Units	Weight (lbs)
			Frequency		250	500	1000	2500	
PE3C10288	Custom Lengths Available	Insertion Loss (Typ.)	0.012	0.018	0.027	0.044	0.072	dB/ft	
			0.04	0.06	0.09	0.15	0.24	dB/m	
PE3C10288-12	12 Inch	Insertion Loss (Typ.)	0.22	0.22	0.23	0.25	0.28	dB	0.289
PE3C10288-24	24 Inch	Insertion Loss (Typ.)	0.23	0.24	0.26	0.29	0.35	dB	0.325
PE3C10288-36	36 Inch	Insertion Loss (Typ.)	0.24	0.26	0.29	0.34	0.42	dB	0.36
PE3C10288-48	48 Inch	Insertion Loss (Typ.)	0.25	0.28	0.31	0.38	0.49	dB	0.395
PE3C10288-60	60 Inch	Insertion Loss (Typ.)	0.26	0.29	0.34	0.42	0.56	dB	0.43

The insertion loss data for the base model does not include loss due to the connectors. Each length includes insertion loss due to the connectors.

Loss due to Connector 1:	0.1 dB
Loss due to Connector 2:	0.1 dB
Base Weight:	0.289 pounds
Additional Weight per Inch:	1.5192 pounds

Mechanical Specifications

Cable Assembly

Width/Diameter	0.5 in [12.7 mm]
Weight	0.289 lbs [131.09 g]

Cable

Cable Type	LMR-600-LLPX
Impedance	50 Ohms
Inner Conductor Type	Stranded
Inner Conductor Material and Plating	Copper Clad Aluminum
Dielectric Type	PTFE
Outer Conductor 1 Material and Plating	Aluminum Tape
Outer Conductor Diameter	0.461 in [11.71 mm]
Jacket Material	Fluoropolymer
Jacket Diameter	0.565 in [14.35 mm]

Plenum N Male to N Male Low Loss Cable Using LMR-600-LLPX Coax with Times Microwave Components



PE3C10288

Connectors

Description	Connector 1	Connector 2
Type	N Male	N Male
Impedance	50 Ohms	50 Ohms
Configuration	Straight	Straight
Contact Material and Plating	Brass, Gold	Brass, Gold
Contact Plating Specification	50 µin minimum	50 µin minimum
Dielectric Type	PTFE	PTFE
Body Material and Plating	Brass, Tri-Metal	Brass, Tri-Metal
Body Plating Specification	100 µin minimum	100 µin minimum
Coupling Nut Material and Plating	Brass, Tri-Metal	Brass, Tri-Metal
Coupling Nut Plating Specification	100 µin minimum	100 µin minimum
Hex Size	20.57 mm	20.57 mm
Torque	44 in-lbs 4.97 Nm	44 in-lbs 4.97 Nm

Environmental Specifications

Operating Range Temperature -40 to +125 deg C

Compliance Certifications (see [product page](#) for current document)

Plotted and Other Data

Notes:

Plenum N Male to N Male Low Loss Cable Using LMR-600-LLPX Coax with Times Microwave Components



PE3C10288

Typical Performance Data

How to Order

Part Number Configuration:

PE3C10288

- **xx**

uu

Unit of Measure:

cm = Centimeters

<blank> = Inches

Length

Base Number

Example: PE3C10288-12 = 12 inches long cable
PE3C10288-100cm = 100 cm long cable

Plenum N Male to N Male Low Loss Cable Using LMR-600-LLPX Coax with Times Microwave Components from Pasternack Enterprises has same day shipment for domestic and International orders. Our RF, microwave and millimeter wave products maintain a 99.4% availability and are part of the broadest selection in the industry.

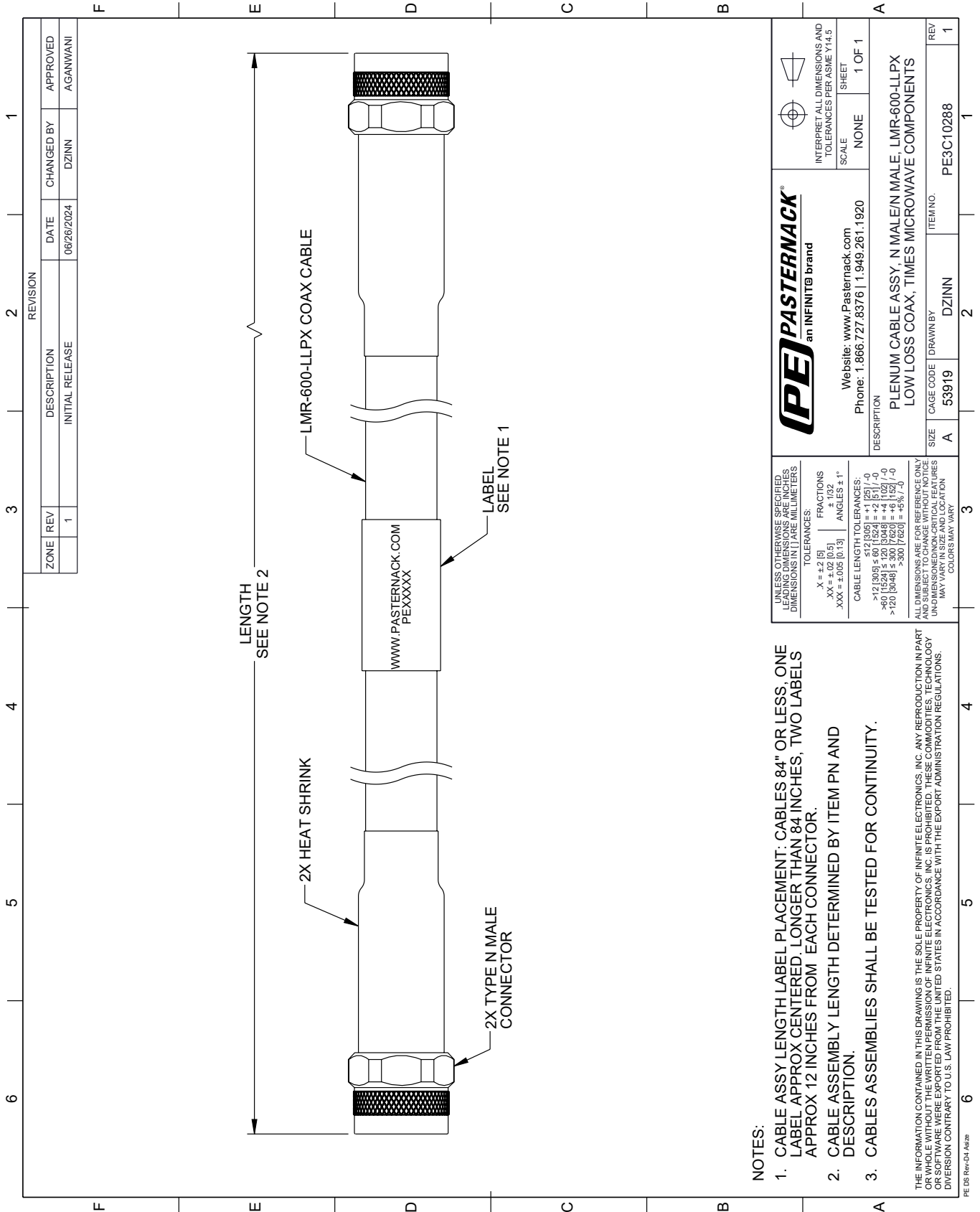
Click the following link (or enter part number in "SEARCH" on website) to obtain additional part information including price, inventory and certifications: [Plenum N Male to N Male Low Loss Cable Using LMR-600-LLPX Coax with Times Microwave Components PE3C10288](#)

URL: <https://www.pasternack.com/plenum-n-male-to-n-male-low-loss-cable-using-lmr-600-llpx-pe3c10288-p.aspx>

The information contained within this document is accurate to the best of our knowledge and representative of the part described herein. It may be necessary to make modifications to the part and/or the documentation of the part in order to implement improvements. Pasternack Enterprises reserves the right to make such changes as required. Unless otherwise stated, all specifications are nominal. Pasternack Enterprises does not make any representation or warranty regarding the suitability of the part described herein for any particular purpose, and Pasternack Enterprises does not assume liability arising out of the use of any part or document.

PE3C10288 CAD Drawing

Plenum N Male to N Male Low Loss Cable Using LMR-600-LLPX Coax with Times Microwave Components



NOTES:

1. CABLE ASSY LENGTH LABEL PLACEMENT: CABLES 84" OR LESS, ONE LABEL APPROX CENTERED, LONGER THAN 84 INCHES, TWO LABELS APPROX 12 INCHES FROM EACH CONNECTOR.
2. CABLE ASSEMBLY LENGTH DETERMINED BY ITEM PN AND DESCRIPTION.
3. CABLES ASSEMBLIES SHALL BE TESTED FOR CONTINUITY.

THE INFORMATION CONTAINED IN THIS DRAWING IS THE SOLE PROPERTY OF INFINITE ELECTRONICS, INC. ANY REPRODUCTION IN PART OR WHOLE WITHOUT THE WRITTEN PERMISSION OF INFINITE ELECTRONICS, INC. IS PROHIBITED. THESE COMMODITIES, TECHNOLOGY OR SERVICES WERE EXPORTED FROM THE UNITED STATES IN ACCORDANCE WITH THE EXPORT ADMINISTRATION REGULATIONS. DIVERSION CONTRARY TO U.S. LAW PROHIBITED.

PE DS Rev-04 Add2

REVISION		DATE	CHANGED BY	APPROVED
ZONE	REV			
	1	06/26/2024	DZINN	AGANWANI
DESCRIPTION				
INITIAL RELEASE				

 Website: www.Pasternack.com Phone: 1.866.727.8376 1.949.261.1920		INTERPRET ALL DIMENSIONS AND TOLERANCES PER ASME Y14.5 SCALE NONE SHEET 1 OF 1
DESCRIPTION		
PLENUM CABLE ASSY, N MALE/N MALE, LMR-600-LLPX LOW LOSS COAX, TIMES MICROWAVE COMPONENTS		
SIZE	CAGE CODE	ITEM NO.
A	53919	DZINN
DRAWN BY		REV
PE3C10288		1

UNLESS OTHERWISE SPECIFIED, LEADING DIMENSIONS ARE IN INCHES, DIMENSIONS IN [] ARE MILLIMETERS.

TOLERANCES:
 .X = ±.2 [5]
 .XX = ±.02 [0.5]
 .XXX = ±.005 [0.13]

FRACTIONS ± 1/32
 ANGLES ± 1°

CABLE LENGTH TOLERANCES:
 <12 [305] ≤ 60 [1524] = ±1 [25] / -0
 >60 [1524] ≤ 120 [3048] = ±4 [102] / -0
 >120 [3048] ≤ 300 [7620] = ±5% / -0

ALL DIMENSIONS ARE FOR REFERENCE ONLY. UNDIMENSIONED NON-CRITICAL FEATURES MAY VARY IN SIZE AND LOCATION. COLORS MAY VARY.