

Waterproof IP68 7/16 DIN Male (Plug) to N Male (Plug) Low PIM Cable Using TCOM-400 Coax with Times Microwave Components

PE3C10354/WP

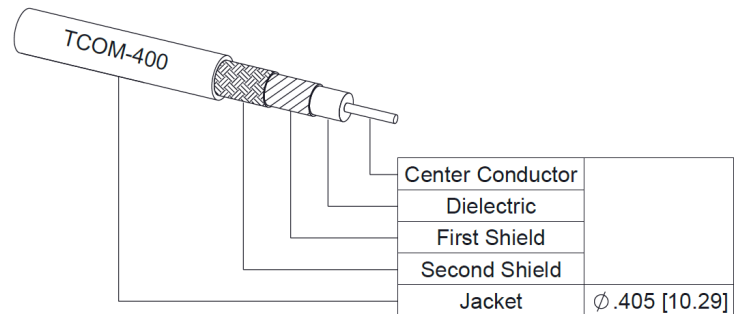


Configuration

- Connector 1: 7/16 DIN Male
- Connector 2: N Male
- Cable Type: TCOM-400
- Coax Flex Type: Flexible

Features

- Max Frequency 6 GHz
- Low PIM: -155 dBc Max
- Shielding Effectivity > 100 dB
- 85% Phase Velocity
- Double Shielded
- PE Jacket
- 500 Mating Cycles
- Silicone Connector Boot
- IP68 Rated



Applications

- General Purpose
- Laboratory Use
- Low PIM Applications

Description

The Pasternack PE3C10353/WP is a weatherproof low loss cable assembly that comes with 7/16 DIN male connection with weatherproof boot on one end and type N male with weatherproof boot on the other. Pasternack's RF coaxial cable assembly products are designed for typical use, production, laboratory test and measurement, defense/military, aerial antenna towers, etc. The low loss cable has a 50 Ohm impedance and is specifically ready for quicker shipment than most in the industry can provide.

This weatherproof low loss RF cable assembly operates at a maximum frequency of 6 GHz. Our RF cable assembly has a PE jacket with 0.405 inches diameter. The 7/16 DIN male to type N male cable assembly PE3C10353/WP is built with TCOM-400 coax, which has a flexible design. This RF cable assembly with 0.5 inches diameter has copper clad aluminum as cable's inner conducting material and PE (F) dielectric type. The weatherproof boot low loss cable is reusable and can withstand elements including extreme temperature. Additional dimensions, specifications, and CAD drawings for this PE3C10353/WP low loss RF cable are available on our downloadable PDF datasheet.

Pasternack stocks a wide selection of weatherproof low loss cable assemblies that ship the same business day as ordered from our warehouse. Make your online purchase right now to take advantage of our same-day shipping. For further information on similar products, our expert technical support and knowledgeable sales team can help you get the ideal TNC male to type N female cable assembly as per your requirements.

Electrical Specifications

| Description | Minimum | Typical | Maximum | Units |
|-------------------------|---------|------------|---------|--------------|
| Frequency Range | DC | | 6 | GHz |
| VSWR | | | 1.4:1 | |
| Velocity of Propagation | | 85 | | % |
| RF Shielding | 100 | | | dB |
| Group Delay | | 1.2 [3.94] | | ns/ft [ns/m] |

Waterproof IP68 7/16 DIN Male (Plug) to N Male (Plug) Low PIM Cable Using TCOM-400 Coax with Times Microwave Components



PE3C10354/WP

Electrical Specifications

| Description | Minimum | Typical | Maximum | Units |
|--|---------|--------------|---------|-----------------------|
| Passive Intermodulation | | | -155 | dBc |
| IM3 (2x43dBm Tones) at 850 MHz or 1900 MHz | | | | |
| Capacitance | | 23.9 [78.41] | | pF/ft [pF/m] |
| Inductance | | 0.06 [0.2] | | uH/ft [uH/m] |
| DC Resistance Inner Conductor | | 1.39 [4.56] | | Ohms/1000ft [Ohms/Km] |
| DC Resistance Outer Conductor | | 1.47 [4.82] | | Ohms/1000ft [Ohms/Km] |
| Dielectric Withstanding Voltage (DC) | | | 2,500 | Vdc |
| Jacket Spark | | | 8,000 | Vrms |
| Input Power (Peak) | | | 16 | KWatts |

Specifications by Frequency

| Part Number | Length | Description | F1 | F2 | F3 | F4 | F5 | Units | Weight (lbs) |
|-----------------|--------------------------|-----------------------|-------|------|-------|-------|-------|-------|--------------|
| | | Frequency | 250 | 500 | 1000 | 2500 | 6000 | MHz | |
| PE3C10354/WP | Custom Lengths Available | Insertion Loss (Typ.) | 0.021 | 0.03 | 0.044 | 0.072 | 0.117 | dB/ft | |
| | | | 0.07 | 0.1 | 0.15 | 0.24 | 0.39 | dB/m | |
| PE3C10354/WP-12 | 12 Inch | Insertion Loss (Typ.) | 0.23 | 0.23 | 0.25 | 0.28 | 0.32 | dB | 0.82 |
| PE3C10354/WP-24 | 24 Inch | Insertion Loss (Typ.) | 0.25 | 0.26 | 0.29 | 0.35 | 0.44 | dB | 0.9 |
| PE3C10354/WP-36 | 36 Inch | Insertion Loss (Typ.) | 0.27 | 0.29 | 0.34 | 0.42 | 0.56 | dB | 0.98 |
| PE3C10354/WP-48 | 48 Inch | Insertion Loss (Typ.) | 0.29 | 0.32 | 0.38 | 0.49 | 0.67 | dB | 1.06 |
| PE3C10354/WP-60 | 60 Inch | Insertion Loss (Typ.) | 0.31 | 0.35 | 0.42 | 0.56 | 0.79 | dB | 1.14 |

The insertion loss data for the base model does not include loss due to the connectors. Each length includes insertion loss due to the connectors.

| | |
|-----------------------------|----------------|
| Loss due to Connector 1: | 0.1 dB |
| Loss due to Connector 2: | 0.1 dB |
| Base Weight: | 0.82 pounds |
| Additional Weight per Inch: | 0.00666 pounds |

Mechanical Specifications

Cable Assembly

| | |
|----------------|---------------------|
| Width/Diameter | 0.5 in [12.7 mm] |
| Weight | 0.82 lbs [371.95 g] |

Cable

| | |
|--------------------------------------|----------------------------|
| Cable Type | TCOM-400 |
| Impedance | 50 Ohms |
| Inner Conductor Type | Stranded |
| Inner Conductor Material and Plating | Copper Clad Aluminum |
| Dielectric Type | PE (F) |
| Number of Shields | 2 |
| Shield Layer 1 | Silver Plated Copper Braid |
| Shield Layer 2 | Tinned Copper Braid |

Waterproof IP68 7/16 DIN Male (Plug) to N Male (Plug) Low PIM Cable Using TCOM-400 Coax with Times Microwave Components



PE3C10354/WP

| | |
|------------------------------|------------------------|
| Jacket Material | PE |
| Jacket Diameter | 0.405 in [10.29 mm] |
| One Time Minimum Bend Radius | 1 in [25.4 mm] |
| Repeated Minimum Bend Radius | 4 in [101.6 mm] |
| Bending Moment | 0.5 lbs-ft [0.68 N-m] |
| Flat Plate Crush | 40 lbs/in [0.71 Kg/mm] |
| Tensile Strength | 160 lbs [72.57 Kg] |

Connectors

| Description | Connector 1 | Connector 2 |
|-------------------------------|-------------------|-------------------|
| Type | 7/16 DIN Male | N Male |
| Option | Weatherproof Boot | Weatherproof Boot |
| Specification | IEC-61169-4 | IEC-61169-16 |
| Impedance | 50 Ohms | 50 Ohms |
| Configuration | Straight | Straight |
| Mating Cycles | 500 | 500 |
| Contact Material and Plating | Brass, Silver | Brass, Silver |
| Contact Plating Specification | 200 µin minimum | 200 µin minimum |
| Dielectric Type | PTFE | PTFE |
| Body Material and Plating | Brass, Tri-Metal | Brass, Tri-Metal |
| Body Plating Specification | 80 µin minimum | 80 µin minimum |
| Torque | 44.25 in-lbs 5 Nm | 44.25 in-lbs 5 Nm |
| Boot Material | Silicone | Silicone |

Environmental Specifications

| | |
|--------------------------------|------------------|
| Operating Range Temperature | -40 to +85 deg C |
| Ingress Protection (IP) Rating | IP68 |

Compliance Certifications (see [product page](#) for current document)

Plotted and Other Data

Notes:
Values at 25°C, sea level.

Waterproof IP68 7/16 DIN Male (Plug) to N Male (Plug) Low PIM Cable Using TCOM-400 Coax with Times Microwave Components



PE3C10354/WP

Typical Performance Data

How to Order

Part Number Configuration:

PE3C10354/WP

- **xx**

uu

Unit of Measure:

cm = Centimeters

<blank> = Inches

Length

Base Number

Example: PE3C10354/WP-12 = 12 inches long cable
PE3C10354/WP-100cm = 100 cm long cable

Waterproof IP68 7/16 DIN Male (Plug) to N Male (Plug) Low PIM Cable Using TCOM-400 Coax with Times Microwave Components from Pasternack Enterprises has same day shipment for domestic and International orders. Our RF, microwave and millimeter wave products maintain a 99.4% availability and are part of the broadest selection in the industry.

Click the following link (or enter part number in "SEARCH" on website) to obtain additional part information including price, inventory and certifications: [Waterproof IP68 7/16 DIN Male \(Plug\) to N Male \(Plug\) Low PIM Cable Using TCOM-400 Coax with Times Microwave Components PE3C10354/WP](https://www.pasternack.com/waterproof-ip68-7-16-din-male-plug-to-n-male-plug-low-pim-cable-using-tcom-400-pe3c10354-wp-p.aspx)

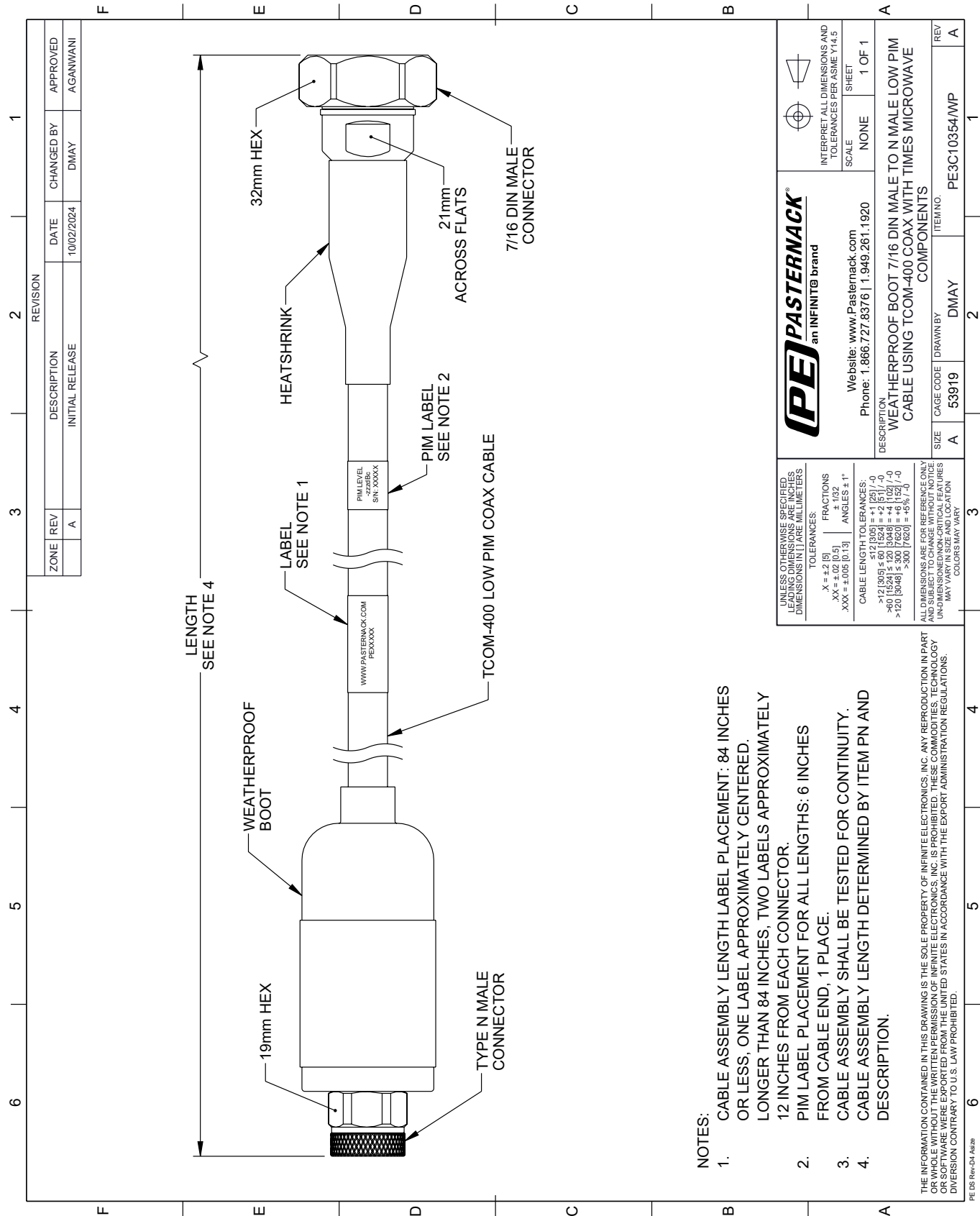
URL: <https://www.pasternack.com/waterproof-ip68-7-16-din-male-plug-to-n-male-plug-low-pim-cable-using-tcom-400-pe3c10354-wp-p.aspx>

The information contained within this document is accurate to the best of our knowledge and representative of the part described herein. It may be necessary to make modifications to the part and/or the documentation of the part in order to implement improvements. Pasternack Enterprises reserves the right to make such changes as required. Unless otherwise stated, all specifications are nominal. Pasternack Enterprises does not make any representation or warranty regarding the suitability of the part described herein for any particular purpose, and Pasternack Enterprises does not assume liability arising out of the use of any part or document.

PE3C10354/WP CAD Drawing

Waterproof IP68 7/16 DIN Male (Plug) to N Male (Plug) Low PIM Cable

Using TCOM-400 Coax with Times Microwave Components



- NOTES:
1. CABLE ASSEMBLY LENGTH LABEL PLACEMENT: 84 INCHES OR LESS, ONE LABEL APPROXIMATELY CENTERED. LONGER THAN 84 INCHES, TWO LABELS APPROXIMATELY 12 INCHES FROM EACH CONNECTOR.
 2. PIM LABEL PLACEMENT FOR ALL LENGTHS: 6 INCHES FROM CABLE END, 1 PLACE.
 3. CABLE ASSEMBLY SHALL BE TESTED FOR CONTINUITY.
 4. CABLE ASSEMBLY LENGTH DETERMINED BY ITEM PN AND DESCRIPTION.