

Fire Rated 7/16 DIN Male to 7/16 DIN Male Low PIM Cable Using TCOM-600-FR Coax With Times Microwave Components

PE3C10369

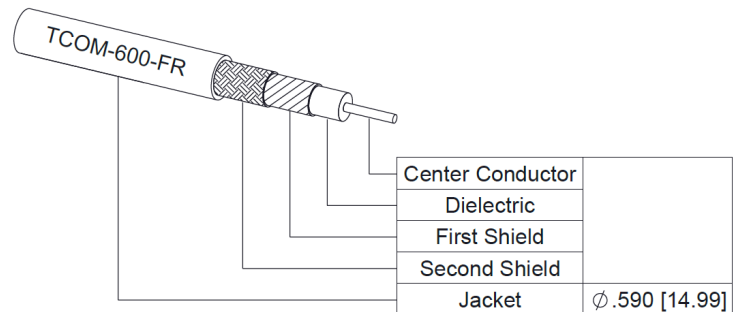


Configuration

- Connector 1: 7/16 DIN Male
- Connector 2: 7/16 DIN Male
- Cable Type: TCOM-600-FR
- Coax Flex Type: Flexible

Features

- Max Frequency 6 GHz
- Shielding Effectivity > 100 dB
- 87% Phase Velocity
- Double Shielded
- PE Jacket
- 500 Mating Cycles



Applications

- General Purpose
- Laboratory Use
- Low PIM Applications

Description

Pasternack's PE3C10369 7/16 DIN male to 7/16 DIN male cable using TCOM-600-FR coax is part of our full line of RF components available for same-day shipping. Pasternack's flexible RF cable assemblies are ideal for applications where tight bends and flexure are required. This Pasternack 7/16 DIN to 7/16 DIN cable assembly has a male to male gender configuration with 50 ohm flexible TCOM-600-FR coax. The PE3C10369 7/16 DIN male to 7/16 DIN male cable assembly operates to 6 GHz. Our low PIM design also offers excellent passive intermodulation performance. The double shielding of this Pasternack cable assembly provides excellent shielding effectiveness of better than 100 dB.

Custom versions of most RF cable assemblies can be built and shipped same day. Custom cable assembly lengths can be obtained by specifying the desired length on the web site at time of order or by contacting a sales representative. Other available RF cable assembly value added services include connector orientation or clocking, heat shrink booting and custom labeling. RF testing can also be performed to document the electrical performance of your cable assembly.

Electrical Specifications

Description	Minimum	Typical	Maximum	Units
Frequency Range	DC		6	GHz
VSWR			1.4:1	
Velocity of Propagation		87		%
RF Shielding	100			dB
Group Delay		1.17 [3.84]		ns/ft [ns/m]
Passive Intermodulation		-155		dBc
IM3 (2x43dBm Tones) at 850 MHz or 1900 MHz				
Capacitance		23.4 [76.77]		pF/ft [pF/m]
Inductance		0.058 [0.19]		uH/ft [uH/m]
DC Resistance Inner Conductor		0.53 [1.74]		Ohms/1000ft [Ohms/Km]

Fire Rated 7/16 DIN Male to 7/16 DIN Male
Low PIM Cable Using TCOM-600-FR Coax With
Times Microwave Components



PE3C10369

Electrical Specifications

Description	Minimum	Typical	Maximum	Units
DC Resistance Outer Conductor		1.52 [4.99]		Ohms/1000ft [Ohms/Km]
Jacket Spark			8,000	Vrms

Specifications by Frequency

Part Number	Length	Description	F1	F2	F3	F4	F5	Units	Weight (lbs)
		Frequency	250	500	1000	2500	6000	MHz	
PE3C10369	Custom Lengths Available	Insertion Loss (Typ.)	0.013	0.019	0.028	0.046	0.077	dB/ft	
			0.05	0.07	0.1	0.16	0.26	dB/m	
PE3C10369-24	24 inch	Insertion Loss (Typ.)	0.52	0.53	0.55	0.59	0.65	dB	0.708
PE3C10369-36	36 inch	Insertion Loss (Typ.)	0.53	0.55	0.58	0.63	0.73	dB	0.862
PE3C10369-48	48 inch	Insertion Loss (Typ.)	0.55	0.57	0.61	0.68	0.8	dB	1.016
PE3C10369-120	120 inch	Insertion Loss (Typ.)	0.62	0.68	0.77	0.95	1.26	dB	1.94
PE3C10369-180	180 inch	Insertion Loss (Typ.)	0.69	0.78	0.91	1.18	1.65	dB	2.71

The insertion loss data for the base model does not include loss due to the connectors. Each length includes insertion loss due to the connectors.

Loss due to Connector 1:	0.245 dB
Loss due to Connector 2:	0.245 dB
Base Weight:	0.554 pounds
Additional Weight per Inch:	0.01283 pounds

Mechanical Specifications

Cable Assembly

Width/Diameter	0.5 in [12.7 mm]
Weight	0.554 lbs [251.29 g]

Cable

Cable Type	TCOM-600-FR
Impedance	50 Ohms
Inner Conductor Type	Solid
Inner Conductor Material and Plating	Copper Clad Aluminum
Dielectric Type	PE (F)
Number of Shields	2
Shield Layer 1	Silver Plated Copper Braid
Shield Layer 2	Tinned Copper Braid
Jacket Material	PE, Black
Jacket Diameter	0.59 in [14.99 mm]
One Time Minimum Bend Radius	1.5 in [38.1 mm]
Repeated Minimum Bend Radius	6 in [152.4 mm]
Bending Moment	2.75 lbs-ft [3.73 N-m]
Flat Plate Crush	60 lbs/in [1.07 Kg/mm]
Tensile Strength	350 lbs [158.76 Kg]

Fire Rated 7/16 DIN Male to 7/16 DIN Male
Low PIM Cable Using TCOM-600-FR Coax With
Times Microwave Components



PE3C10369

Connectors

Description	Connector 1	Connector 2
Type	7/16 DIN Male	7/16 DIN Male
Impedance	50 Ohms	50 Ohms
Configuration	Straight	Straight
Mating Cycles	500	500
Contact Material and Plating	Brass, Silver	Brass, Silver
Dielectric Type	PTFE	PTFE
Body Material and Plating	Brass, Tri-Metal	Brass, Tri-Metal

Environmental Specifications

Operating Range Temperature -40 to +85 deg C

Compliance Certifications (see [product page](#) for current document)

Plotted and Other Data

Notes:

Fire Rated 7/16 DIN Male to 7/16 DIN Male
Low PIM Cable Using TCOM-600-FR Coax With
Times Microwave Components



PE3C10369

Typical Performance Data

How to Order

Part Number Configuration:

PE3C10369

- **xx**

uu

Unit of Measure:
cm = Centimeters
<blank> = Inches
Length
Base Number

Example: PE3C10369-12 = 12 inches long cable
PE3C10369-100cm = 100 cm long cable

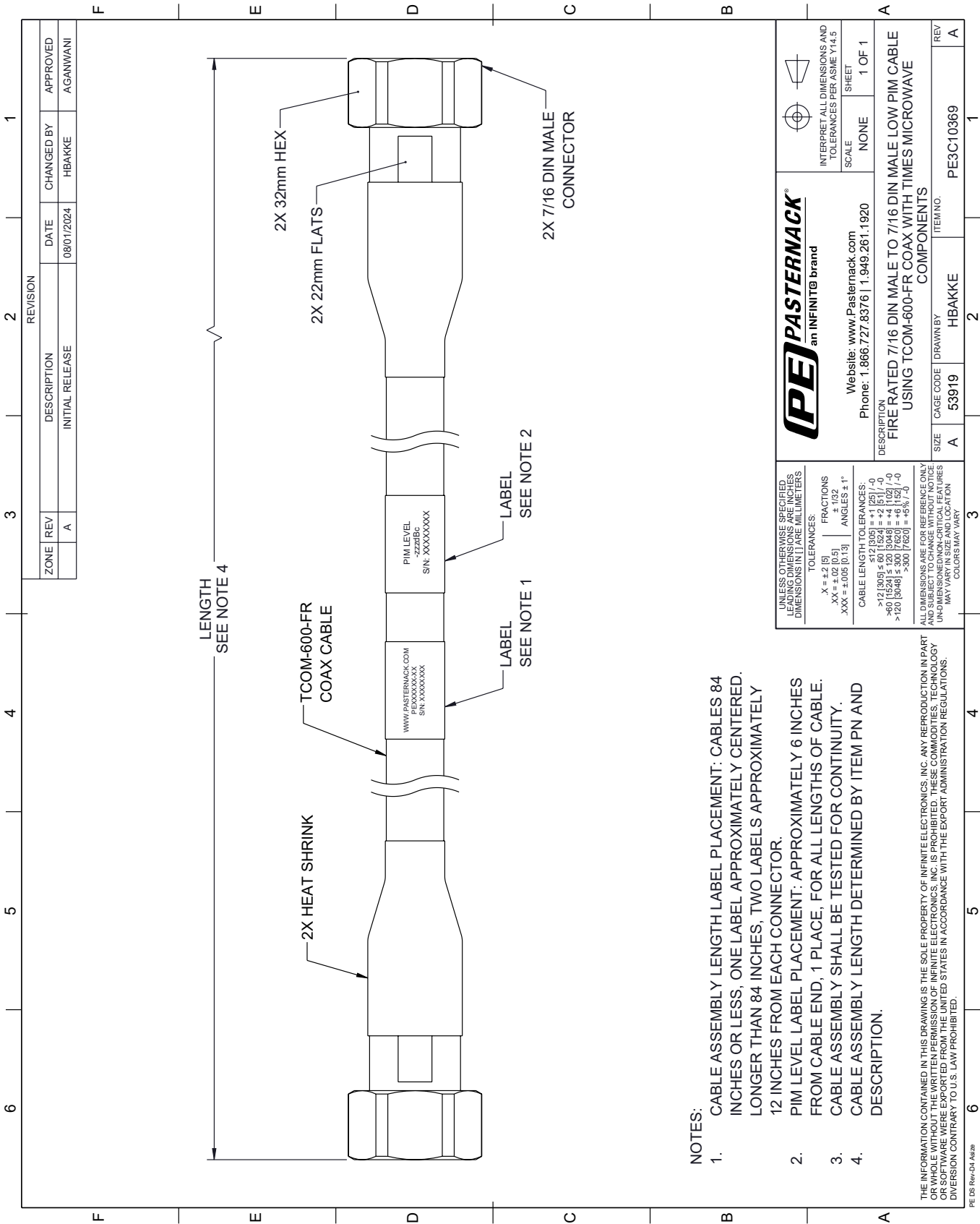
Fire Rated 7/16 DIN Male to 7/16 DIN Male Low PIM Cable Using TCOM-600-FR Coax With Times Microwave Components from Pasternack Enterprises has same day shipment for domestic and International orders. Our RF, microwave and millimeter wave products maintain a 99.4% availability and are part of the broadest selection in the industry.

Click the following link (or enter part number in "SEARCH" on website) to obtain additional part information including price, inventory and certifications: [Fire Rated 7/16 DIN Male to 7/16 DIN Male Low PIM Cable Using TCOM-600-FR Coax With Times Microwave Components PE3C10369](#)

URL: <https://www.pasternack.com/fire-rated-7-16-din-male-to-7-16-din-male-low-pim-cable-using-tcom-600-fr-pe3c10369-p.aspx>

The information contained within this document is accurate to the best of our knowledge and representative of the part described herein. It may be necessary to make modifications to the part and/or the documentation of the part in order to implement improvements. Pasternack Enterprises reserves the right to make such changes as required. Unless otherwise stated, all specifications are nominal. Pasternack Enterprises does not make any representation or warranty regarding the suitability of the part described herein for any particular purpose, and Pasternack Enterprises does not assume liability arising out of the use of any part or document.

PE3C10369 CAD Drawing
Fire Rated 7/16 DIN Male to 7/16 DIN Male Low PIM Cable Using TCOM-600-FR Coax With Times Microwave Components



- NOTES:
- 1. CABLE ASSEMBLY LENGTH LABEL PLACEMENT: CABLES 84 INCHES OR LESS, ONE LABEL APPROXIMATELY CENTERED. LONGER THAN 84 INCHES, TWO LABELS APPROXIMATELY 12 INCHES FROM EACH CONNECTOR.
 - 2. PIM LEVEL LABEL PLACEMENT: APPROXIMATELY 6 INCHES FROM CABLE END, 1 PLACE, FOR ALL LENGTHS OF CABLE.
 - 3. CABLE ASSEMBLY SHALL BE TESTED FOR CONTINUITY.
 - 4. CABLE ASSEMBLY LENGTH DETERMINED BY ITEM PN AND DESCRIPTION.

UNLESS OTHERWISE SPECIFIED, LEADING DIMENSIONS ARE IN INCHES, TRAILING DIMENSIONS ARE IN MILLIMETERS		PE PASTERNAK an INFINITI® brand		INTERPRET ALL DIMENSIONS AND TOLERANCES PER ASME Y14.5	
TOLERANCES:		Website: www.Pasternack.com		SCALE	
X = ±.2 [5]		Phone: 1.866.727.8376 1.949.281.1920		NONE	
.XX = ±.02 [0.5]		DESCRIPTION		SHEET	
.XXX = ±.005 [0.13]		FIRE RATED 7/16 DIN MALE TO 7/16 DIN MALE LOW PIM CABLE USING TCOM-600-FR COAX WITH TIMES MICROWAVE COMPONENTS		1 OF 1	
CABLE LENGTH TOLERANCES:		SIZE		CAGE CODE	
>12 [305] ≤ 60 [1524] = ±.1 [25] / -0		A		53919	
>60 [1524] ≤ 120 [3048] = ±.1 [25] / -0		DRAWN BY		HBAKKE	
>120 [3048] ≤ 300 [7620] = ±.5% / -0		ITEM NO.		PE3C10369	
ALL DIMENSIONS ARE FOR REFERENCE ONLY. UNLESS OTHERWISE SPECIFIED, DIMENSIONS MAY VARY IN SIZE AND LOCATION. COLORS MAY VARY.		REV		A	