

Fire Rated 4.3-10 Male to 7/16 DIN Male
Low PIM Cable Using TCOM-600-FR Coax With
Times Microwave Components



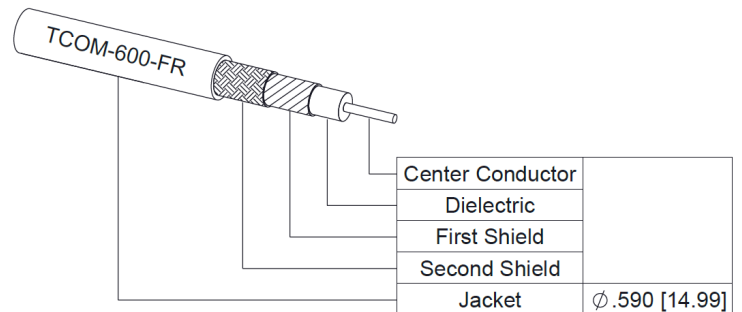
PE3C10371

Configuration

- Connector 1: 4.3-10 Male
- Connector 2: 7/16 DIN Male
- Cable Type: TCOM-600-FR
- Coax Flex Type: Flexible

Features

- Max Frequency 6 GHz
- Shielding Effectivity > 100 dB
- 87% Phase Velocity
- Double Shielded
- PE Jacket
- 500 Mating Cycles



Applications

- General Purpose
- Laboratory Use
- Low PIM Applications

Description

Pasternack's PE3C10371 4.3-10 male to 7/16 DIN male cable using TCOM-600-FR coax is part of our full line of RF components available for same-day shipping. Pasternack's flexible RF cable assemblies are ideal for applications where tight bends and flexure are required. This Pasternack 4.3-10 to 7/16 DIN cable assembly has a male to male gender configuration with 50 ohm flexible TCOM-600-FR coax. The PE3C10371 4.3-10 male to 7/16 DIN male cable assembly operates to 6 GHz. Our low PIM design also offers excellent passive intermodulation performance. The double shielding of this Pasternack cable assembly provides excellent shielding effectiveness of better than 100 dB.

Custom versions of most RF cable assemblies can be built and shipped same day. Custom cable assembly lengths can be obtained by specifying the desired length on the web site at time of order or by contacting a sales representative. Other available RF cable assembly value added services include connector orientation or clocking, heat shrink booting and custom labeling. RF testing can also be performed to document the electrical performance of your cable assembly.

Electrical Specifications

Description	Minimum	Typical	Maximum	Units
Frequency Range	DC		6	GHz
VSWR			1.4:1	
Velocity of Propagation		87		%
RF Shielding	100			dB
Group Delay		1.17 [3.84]		ns/ft [ns/m]
Passive Intermodulation IM3 (2x43dBm Tones) at 850 MHz or 1900 MHz		-155		dBc
Capacitance		23.4 [76.77]		pF/ft [pF/m]
Inductance		0.058 [0.19]		uH/ft [uH/m]
DC Resistance Inner Conductor		0.53 [1.74]		Ohms/1000ft [Ohms/Km]
DC Resistance Outer Conductor		1.52 [4.99]		Ohms/1000ft [Ohms/Km]

Fire Rated 4.3-10 Male to 7/16 DIN Male
Low PIM Cable Using TCOM-600-FR Coax With
Times Microwave Components



PE3C10371

Electrical Specifications

Description	Minimum	Typical	Maximum	Units
Jacket Spark			8,000	Vrms

Specifications by Frequency

Part Number	Length	Description	F1	F2	F3	F4	F5	Units	Weight (lbs)
			Frequency					MHz	
PE3C10371	Custom Lengths Available	Insertion Loss (Typ.)	0.013	0.019	0.028	0.046	0.077	dB/ft	
			0.05	0.07	0.1	0.16	0.26	dB/m	
PE3C10371-24	24 inch	Insertion Loss (Typ.)	0.52	0.53	0.55	0.59	0.65	dB	0.778
PE3C10371-36	36 inch	Insertion Loss (Typ.)	0.53	0.55	0.58	0.63	0.73	dB	0.932
PE3C10371-48	48 inch	Insertion Loss (Typ.)	0.55	0.57	0.61	0.68	0.8	dB	1.086
PE3C10371-120	120 inch	Insertion Loss (Typ.)	0.62	0.68	0.77	0.95	1.26	dB	2.01
PE3C10371-180	180 inch	Insertion Loss (Typ.)	0.69	0.78	0.91	1.18	1.65	dB	2.78

The insertion loss data for the base model does not include loss due to the connectors. Each length includes insertion loss due to the connectors.

Loss due to Connector 1:	0.245 dB
Loss due to Connector 2:	0.245 dB
Base Weight:	0.624 pounds
Additional Weight per Inch:	0.01283 pounds

Mechanical Specifications

Cable Assembly

Width/Diameter	0.5 in [12.7 mm]
Weight	0.624 lbs [283.04 g]

Cable

Cable Type	TCOM-600-FR
Impedance	50 Ohms
Inner Conductor Type	Solid
Inner Conductor Material and Plating	Copper Clad Aluminum
Dielectric Type	PE (F)
Number of Shields	2
Shield Layer 1	Silver Plated Copper Braid
Shield Layer 2	Tinned Copper Braid
Jacket Material	PE, Black
Jacket Diameter	0.59 in [14.99 mm]
One Time Minimum Bend Radius	1.5 in [38.1 mm]
Repeated Minimum Bend Radius	6 in [152.4 mm]
Bending Moment	2.75 lbs-ft [3.73 N-m]
Flat Plate Crush	60 lbs/in [1.07 Kg/mm]
Tensile Strength	350 lbs [158.76 Kg]

Fire Rated 4.3-10 Male to 7/16 DIN Male
Low PIM Cable Using TCOM-600-FR Coax With
Times Microwave Components



PE3C10371

Connectors

Description	Connector 1	Connector 2
Type	4.3-10 Male	7/16 DIN Male
Impedance	50 Ohms	50 Ohms
Configuration	Straight	Straight
Mating Cycles	500	500
Contact Material and Plating	Brass, Silver	Brass, Silver
Dielectric Type	PTFE	PTFE
Body Material and Plating	Brass, Tri-Metal	Brass, Tri-Metal

Environmental Specifications

Operating Range Temperature -40 to +85 deg C

Compliance Certifications (see [product page](#) for current document)

Plotted and Other Data

Notes:

Fire Rated 4.3-10 Male to 7/16 DIN Male
Low PIM Cable Using TCOM-600-FR Coax With
Times Microwave Components



PE3C10371

Typical Performance Data

How to Order

Part Number Configuration:

PE3C10371

- **xx**

uu

Unit of Measure:

cm = Centimeters

<blank> = Inches

Length

Base Number

Example: PE3C10371-12 = 12 inches long cable
PE3C10371-100cm = 100 cm long cable

Fire Rated 4.3-10 Male to 7/16 DIN Male Low PIM Cable Using TCOM-600-FR Coax With Times Microwave Components from Pasternack Enterprises has same day shipment for domestic and International orders. Our RF, microwave and millimeter wave products maintain a 99.4% availability and are part of the broadest selection in the industry.

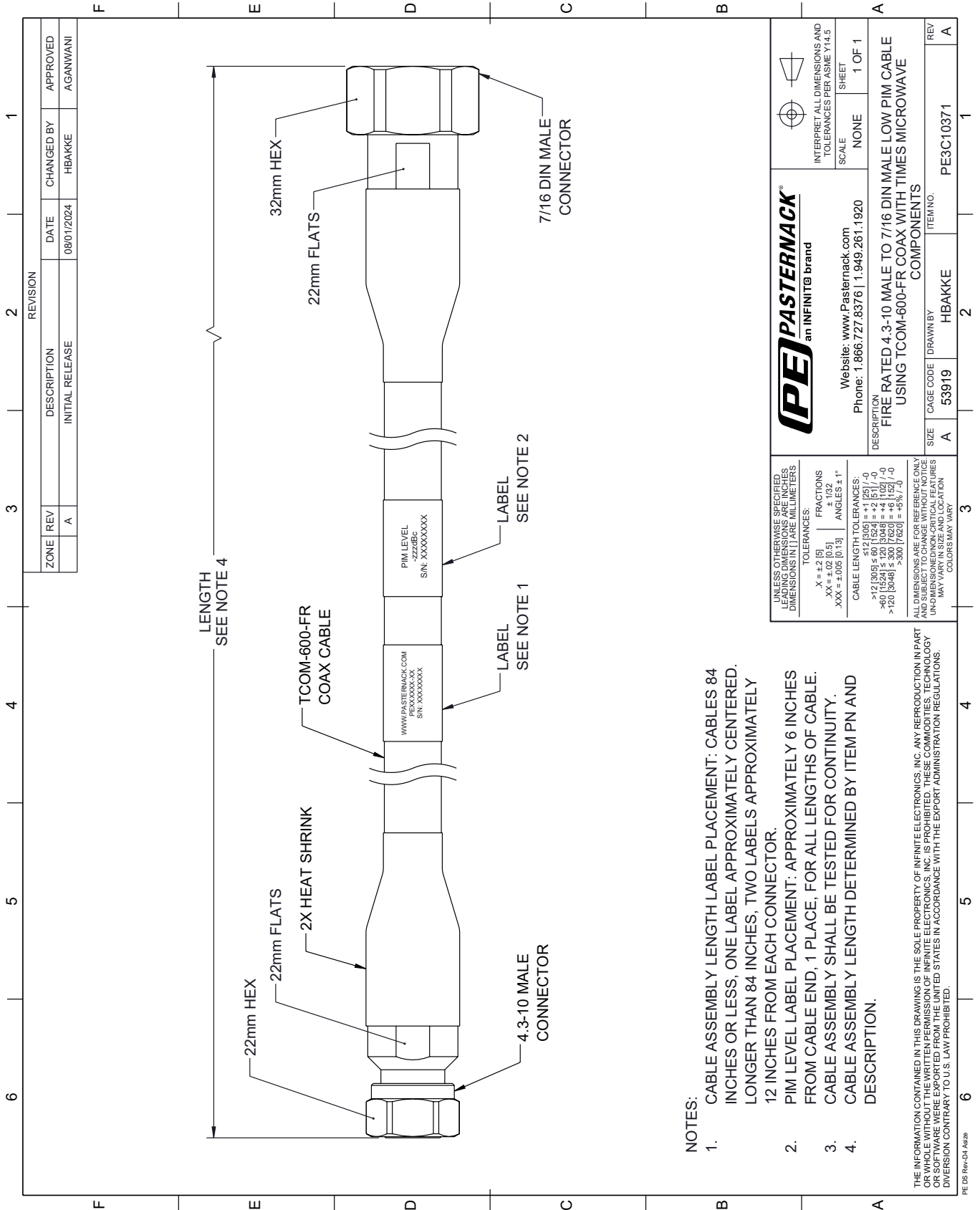
Click the following link (or enter part number in "SEARCH" on website) to obtain additional part information including price, inventory and certifications: [Fire Rated 4.3-10 Male to 7/16 DIN Male Low PIM Cable Using TCOM-600-FR Coax With Times Microwave Components PE3C10371](#)

URL: <https://www.pasternack.com/fire-rated-4.3-10-male-to-7-16-din-male-low-pim-cable-using-tcom-600-fr-pe3c10371-p.aspx>

The information contained within this document is accurate to the best of our knowledge and representative of the part described herein. It may be necessary to make modifications to the part and/or the documentation of the part in order to impliment improvements. Pasternack Enterprises reserves the right to make such changes as required. Unless otherwise stated, all specifications are nominal. Pasternack Enterprises does not make any representation or warranty regarding the suitability of the part described herein for any particular purpose, and Pasternack Enterprises does not assume liability arising out of the use of any part or document.

PE3C10371 CAD Drawing

Fire Rated 4.3-10 Male to 7/16 DIN Male Low PIM Cable Using TCOM-600-FR Coax With Times Microwave Components



- NOTES:
- CABLE ASSEMBLY LABEL PLACEMENT: CABLES 84 INCHES OR LESS, ONE LABEL APPROXIMATELY CENTERED. LONGER THAN 84 INCHES, TWO LABELS APPROXIMATELY 12 INCHES FROM EACH CONNECTOR.
 - PIM LEVEL LABEL PLACEMENT: APPROXIMATELY 6 INCHES FROM CABLE END, 1 PLACE, FOR ALL LENGTHS OF CABLE.
 - CABLE ASSEMBLY SHALL BE TESTED FOR CONTINUITY.
 - CABLE ASSEMBLY LENGTH DETERMINED BY ITEM PN AND DESCRIPTION.

THE INFORMATION CONTAINED IN THIS DRAWING IS THE SOLE PROPERTY OF INFINITE ELECTRONICS, INC. ANY REPRODUCTION IN PART OR WHOLE WITHOUT THE WRITTEN PERMISSION OF INFINITE ELECTRONICS, INC. IS PROHIBITED. THESE COMMODITIES, TECHNOLOGY OR SOFTWARE WERE EXPORTED FROM THE UNITED STATES IN ACCORDANCE WITH THE EXPORT ADMINISTRATION REGULATIONS. DIVERSION CONTRARY TO U.S. LAW PROHIBITED.

PE DS Rev-04 Add2