

Fire Rated BNC Male Right Angle to BNC Male Right Angle Low Loss Cable Using TCOM-240-FR Coax With Times Microwave Components



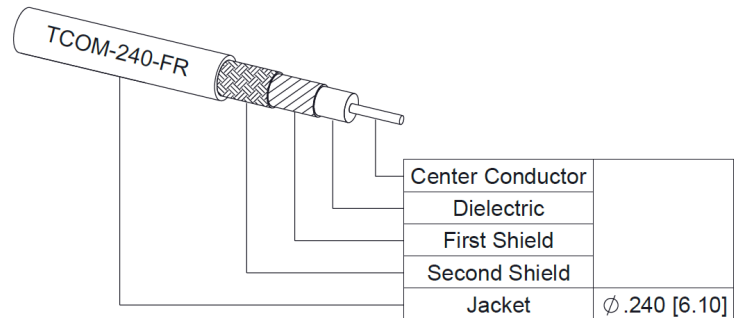
PE3C10408

Configuration

- Connector 1: BNC Male Right Angle
- Connector 2: BNC Male Right Angle
- Cable Type: TCOM-240-FR
- Coax Flex Type: Flexible

Features

- Max Frequency 6 GHz
- Shielding Effectivity > 100 dB
- 84% Phase Velocity
- Double Shielded
- PE Jacket
- 500 Mating Cycles



Applications

- General Purpose
- Laboratory Use

Description

Pasternack's PE3C10408 BNC male right angle to BNC male right angle cable using TCOM-240-FR coax is part of our full line of RF components available for same-day shipping. Pasternack's flexible RF cable assemblies are ideal for applications where tight bends and flexure are required. This Pasternack BNC to BNC cable assembly has a male to male gender configuration with 50 ohm flexible TCOM-240-FR coax. The PE3C10408 BNC male to BNC male cable assembly operates to 6 GHz. The right angle BNC interfaces on the TCOM-240-FR cable allow for easier connections in tight spaces. The double shielding of this Pasternack cable assembly provides excellent shielding effectiveness of better than 100 dB.

Custom versions of most RF cable assemblies can be built and shipped same day. Custom cable assembly lengths can be obtained by specifying the desired length on the web site at time of order or by contacting a sales representative. Other available RF cable assembly value added services include connector orientation or clocking, heat shrink booting and custom labeling. RF testing can also be performed to document the electrical performance of your cable assembly.

Electrical Specifications

Description	Minimum	Typical	Maximum	Units
Frequency Range	DC		6	GHz
VSWR			1.4:1	
Velocity of Propagation		84		%
RF Shielding	100			dB
Group Delay		1.21 [3.97]		ns/ft [ns/m]
Capacitance		24.2 [79.4]		pF/ft [pF/m]
Inductance		0.06 [0.2]		uH/ft [uH/m]
DC Resistance Inner Conductor		3.2 [10.5]		Ohms/1000ft [Ohms/Km]
DC Resistance Outer Conductor		2.06 [6.76]		Ohms/1000ft [Ohms/Km]
Dielectric Withstanding Voltage (DC)			1,500	Vdc

Fire Rated BNC Male Right Angle to BNC Male
Right Angle Low Loss Cable Using TCOM-240-
FR Coax With Times Microwave Components



PE3C10408

Electrical Specifications

Description	Minimum	Typical	Maximum	Units
Jacket Spark			5,000	Vrms

Specifications by Frequency

Part Number	Length	Description	F1	F2	F3	F4	F5	Units	Weight (lbs)
		Frequency	250	500	1000	2500	6000	MHz	
PE3C10408	Custom Lengths Available	Insertion Loss (Typ.)	0.037	0.052	0.076	0.123	0.197	dB/ft	
			0.13	0.18	0.25	0.41	0.65	dB/m	
PE3C10408-12	12 inch	Insertion Loss (Typ.)	0.44	0.46	0.48	0.53	0.6	dB	0.245
PE3C10408-24	24 inch	Insertion Loss (Typ.)	0.48	0.51	0.56	0.65	0.8	dB	0.29
PE3C10408-36	36 inch	Insertion Loss (Typ.)	0.52	0.56	0.63	0.77	1	dB	0.335
PE3C10408-48	48 inch	Insertion Loss (Typ.)	0.55	0.61	0.71	0.9	1.19	dB	0.38
PE3C10408-60	60 inch	Insertion Loss (Typ.)	0.59	0.66	0.78	1.02	1.39	dB	0.425

The insertion loss data for the base model does not include loss due to the connectors. Each length includes insertion loss due to the connectors.

Loss due to Connector 1:	0.2 dB
Loss due to Connector 2:	0.2 dB
Base Weight:	0.245 pounds
Additional Weight per Inch:	0.00375 pounds

Mechanical Specifications

Cable Assembly

Width/Diameter	0.5 in [12.7 mm]
Weight	0.245 lbs [111.13 g]

Cable

Cable Type	TCOM-240-FR
Impedance	50 Ohms
Inner Conductor Type	Solid
Inner Conductor Material and Plating	Copper
Dielectric Type	PE (F)
Number of Shields	2
Shield Layer 1	Silver Plated Copper Braid
Shield Layer 2	Tinned Copper Braid
Jacket Material	PE, Black
Jacket Diameter	0.24 in [6.1 mm]
One Time Minimum Bend Radius	0.75 in [19.05 mm]
Repeated Minimum Bend Radius	2.5 in [63.5 mm]
Bending Moment	0.25 lbs-ft [0.34 N-m]
Flat Plate Crush	20 lbs/in [0.36 Kg/mm]
Tensile Strength	80 lbs [36.29 Kg]

Fire Rated BNC Male Right Angle to BNC Male Right Angle Low Loss Cable Using TCOM-240-FR Coax With Times Microwave Components



PE3C10408

Connectors

Description	Connector 1	Connector 2
Type	BNC Male Right Angle	BNC Male Right Angle
Impedance	50 Ohms	50 Ohms
Configuration	Right Angle	Right Angle
Mating Cycles	500	500
Contact Material and Plating	Brass, Gold over nickel	Brass, Gold over nickel
Contact Plating Specification	50 µin minimum	50 µin minimum
Dielectric Type	PTFE	PTFE
Body Material and Plating	Brass, Tri-Metal	Brass, Tri-Metal
Body Plating Specification	80 µin minimum	80 µin minimum

Environmental Specifications

Operating Range Temperature -40 to +85 deg C

Compliance Certifications (see [product page](#) for current document)

Plotted and Other Data

Notes:

Fire Rated BNC Male Right Angle to BNC Male Right Angle Low Loss Cable Using TCOM-240-FR Coax With Times Microwave Components



PE3C10408

Typical Performance Data

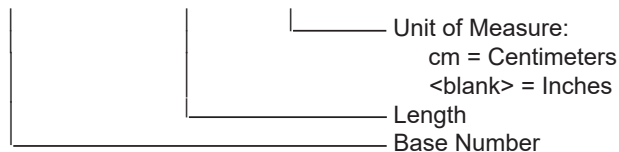
How to Order

Part Number Configuration:

PE3C10408

- **xx**

uu



Example: PE3C10408-12 = 12 inches long cable
PE3C10408-100cm = 100 cm long cable

Fire Rated BNC Male Right Angle to BNC Male Right Angle Low Loss Cable Using TCOM-240-FR Coax With Times Microwave Components from Pasternack Enterprises has same day shipment for domestic and International orders. Our RF, microwave and millimeter wave products maintain a 99.4% availability and are part of the broadest selection in the industry.

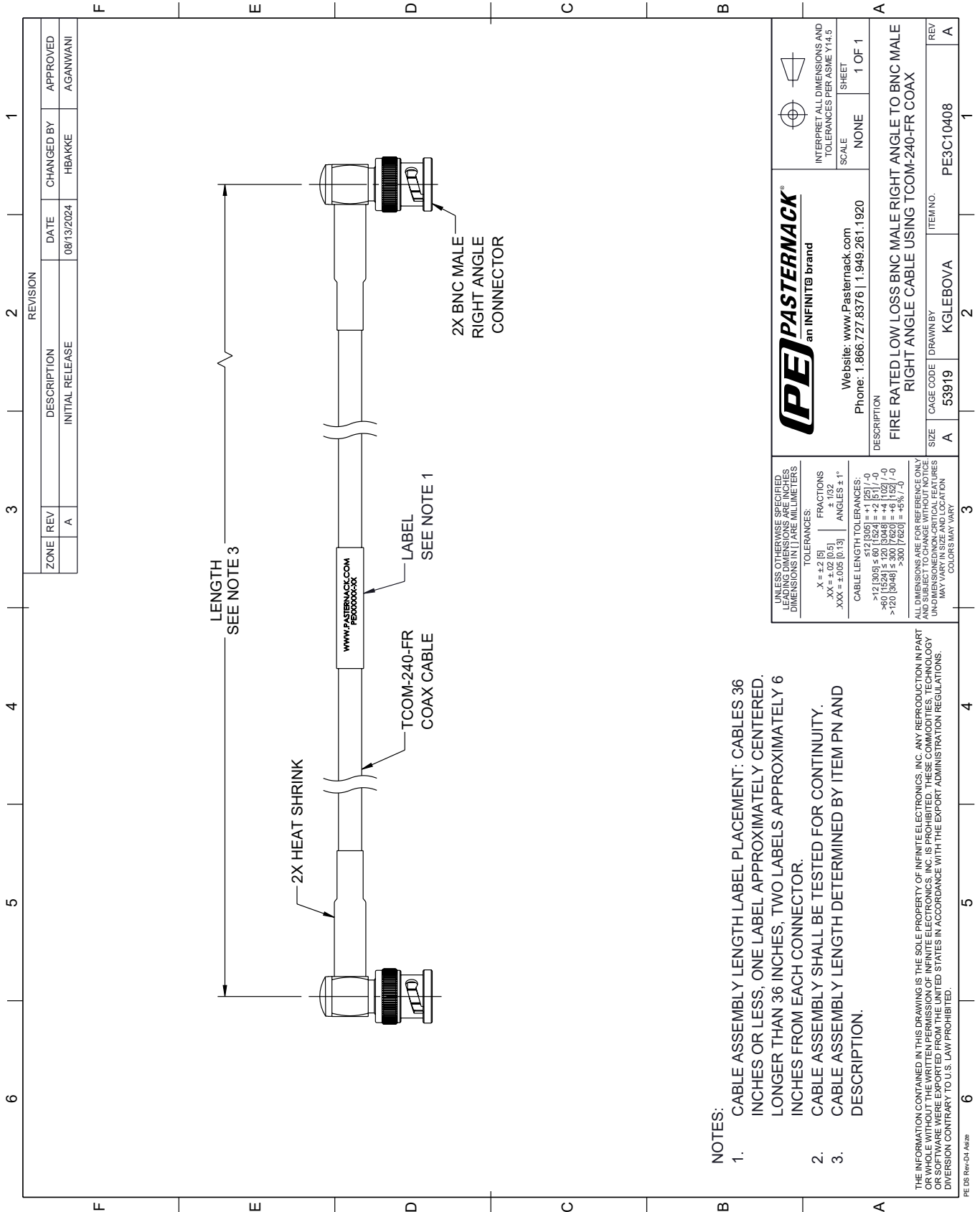
Click the following link (or enter part number in "SEARCH" on website) to obtain additional part information including price, inventory and certifications: [Fire Rated BNC Male Right Angle to BNC Male Right Angle Low Loss Cable Using TCOM-240-FR Coax With Times Microwave Components PE3C10408](https://www.pasternack.com/fire-rated-bnc-male-right-angle-to-bnc-male-right-angle-low-loss-cable-using-tcom-240-fr-pe3c10408-p.aspx)

URL: <https://www.pasternack.com/fire-rated-bnc-male-right-angle-to-bnc-male-low-loss-cable-using-tcom-240-fr-pe3c10408-p.aspx>

The information contained within this document is accurate to the best of our knowledge and representative of the part described herein. It may be necessary to make modifications to the part and/or the documentation of the part in order to impliment improvements. Pasternack Enterprises reserves the right to make such changes as required. Unless otherwise stated, all specifications are nominal. Pasternack Enterprises does not make any representation or warranty regarding the suitability of the part described herein for any particular purpose, and Pasternack Enterprises does not assume liability arising out of the use of any part or document.

PE3C10408 CAD Drawing

Fire Rated BNC Male Right Angle to BNC Male Right Angle Low Loss Cable
Using TCOM-240-FR Coax With Times Microwave Components



NOTES:

1. CABLE ASSEMBLY LENGTH LABEL PLACEMENT: CABLES 36 INCHES OR LESS; ONE LABEL APPROXIMATELY CENTERED. LONGER THAN 36 INCHES, TWO LABELS APPROXIMATELY 6 INCHES FROM EACH CONNECTOR.
2. CABLE ASSEMBLY SHALL BE TESTED FOR CONTINUITY.
3. CABLE ASSEMBLY LENGTH DETERMINED BY ITEM PN AND DESCRIPTION.

THE INFORMATION CONTAINED IN THIS DRAWING IS THE SOLE PROPERTY OF INFINITE ELECTRONICS, INC. ANY REPRODUCTION IN PART OR WHOLE WITHOUT THE WRITTEN PERMISSION OF INFINITE ELECTRONICS, INC. IS PROHIBITED. THESE COMMODITIES, TECHNOLOGY OR SOFTWARE WERE EXPORTED FROM THE UNITED STATES IN ACCORDANCE WITH THE EXPORT ADMINISTRATION REGULATIONS. DIVISION CONTRARY TO U.S. LAW PROHIBITED.

PE DS Rev-04 Add2

UNLESS OTHERWISE SPECIFIED, LEADING DIMENSIONS ARE IN INCHES. DIMENSIONS IN [] ARE MILLIMETERS.		PE PASTERNAK an INFINITI® brand		INTERPRET ALL DIMENSIONS AND TOLERANCES PER ASME Y14.5	
TOLERANCES:		Website: www.Pasternack.com		SCALE: NONE	
.X = ±.2 [5]		Phone: 1.866.727.8376 1.949.261.1920		SHEET 1 OF 1	
.XX = ±.02 [0.5]		FRACCTIONS ± 1/32		REV A	
.XXX = ±.005 [0.13]		ANGLES ± 1°		ITEM NO. PE3C10408	
CABLE LENGTH TOLERANCES:		CAGE CODE 53919		DRAWN BY KGLEBOVA	
>12 [305] ≤ 60 [1524] = ±.1 [25] / -0		DESCRIPTION		REV A	
>60 [1524] ≤ 120 [3048] = ±.4 [102] / -0		FIRE RATED LOW LOSS BNC MALE RIGHT ANGLE TO BNC MALE RIGHT ANGLE CABLE USING TCOM-240-FR COAX		REV A	
>120 [3048] ≤ 300 [7620] = ±.6 [15] / -0		SIZE A		REV A	
ALL DIMENSIONS ARE FOR REFERENCE ONLY. UNLESS OTHERWISE SPECIFIED, DIMENSIONS IN [] ARE MILLIMETERS. UNLESS OTHERWISE SPECIFIED, DIMENSIONS IN [] ARE MILLIMETERS. UNLESS OTHERWISE SPECIFIED, DIMENSIONS IN [] ARE MILLIMETERS. UNLESS OTHERWISE SPECIFIED, DIMENSIONS IN [] ARE MILLIMETERS. UNLESS OTHERWISE SPECIFIED, DIMENSIONS IN [] ARE MILLIMETERS.		DRAWN BY KGLEBOVA		REV A	
MAY VARY IN SIZE AND LOCATION. COLORS MAY VARY.		ITEM NO. PE3C10408		REV A	